

4

3

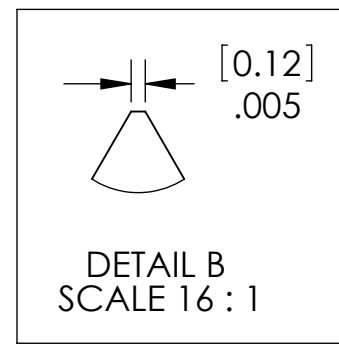
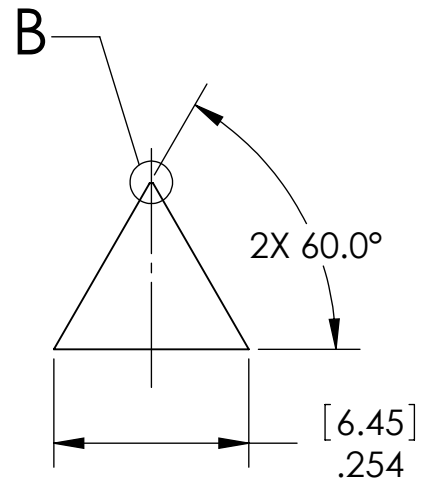
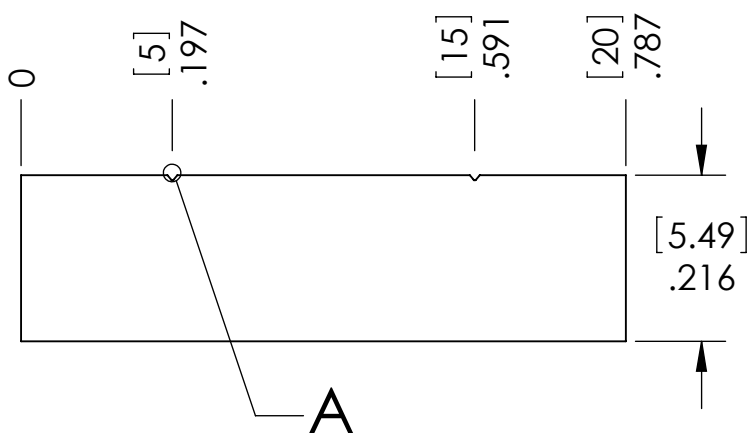
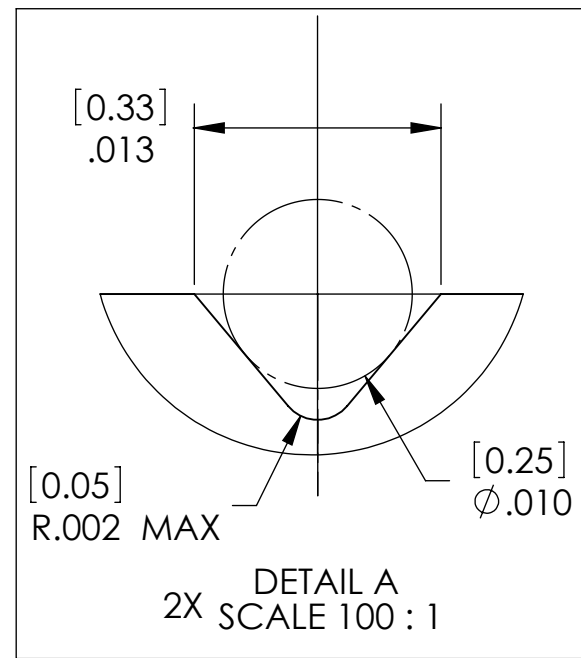
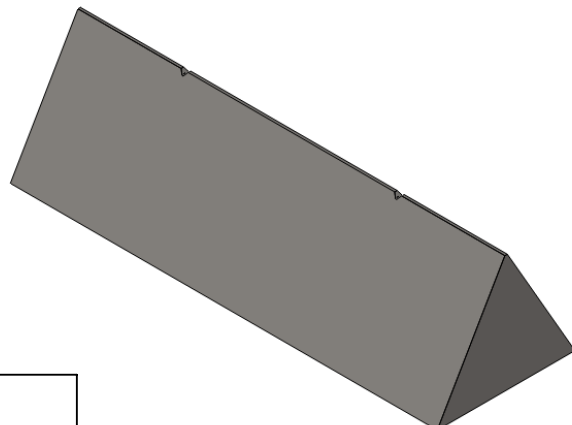
2

1

NOTES CONTINUED:

Ⓢ BAG ALL ITEMS INDIVIDUALLY AND MARK OR TAG EACH BAG WITH DRAWING NUMBER, REVISION, AND QUANTITY. EXAMPLE: DXXXXXX-VY, QTY: TBD

REV.	DATE	DCN #	DRAWING TREE #
v2	24th Nov 2009	LIGO-E0900432	
v1	Oct 2009	Draft for discussion only	



NOTES AND TOLERANCES: (UNLESS OTHERWISE SPECIFIED)

DIMENSIONS ARE IN INCHES [MM]  
 TOLERANCES:  
 .XX ± .01  
 .XXX ± .005  
 ANGULAR ± 0.5°

1. INTERPRET DRAWING PER ASME Y14.5-1994.  
 2. REMOVE ALL SHARP EDGES, R.02 MIN.  
 3. DO NOT SCALE FROM DRAWING.  
 4. ALL MACHINING FLUIDS SHALL BE WATER SOLUBLE AND FREE OF SULFUR, CHLORINE AND SILICONE, SUCH AS CINCINNATI MILACRON'S CIMTECH 410.

**MATERIAL** AISI 304  
**FINISH** 32 μinch

**LIGO** CALIFORNIA INSTITUTE OF TECHNOLOGY  
 MASSACHUSETTS INSTITUTE OF TECHNOLOGY

**SYSTEM** ADVANCED LIGO  
**SUB-SYSTEM** SUS  
**NEXT ASSY** FM BS

**PART NAME** SECONDARY METAL PRISM BREAKOFF, FM / BS

**DESIGNER** C. I. TORRIE 22 NOV 2009  
**DRAFTER** C. I. TORRIE 22 NOV 2009  
**CHECKER** N. ROBERTSON 24 NOV 2009  
**APPROVAL** M. V. VEGGEL REFER TO DCN

**SIZE** DWG. NO. **A** **D0902368**  
**REV.** v2  
**SCALE:** 4:1 **PROJECTION:** **SHEET 1 OF 1**

4

3

2

1