

8

7

6

5

4

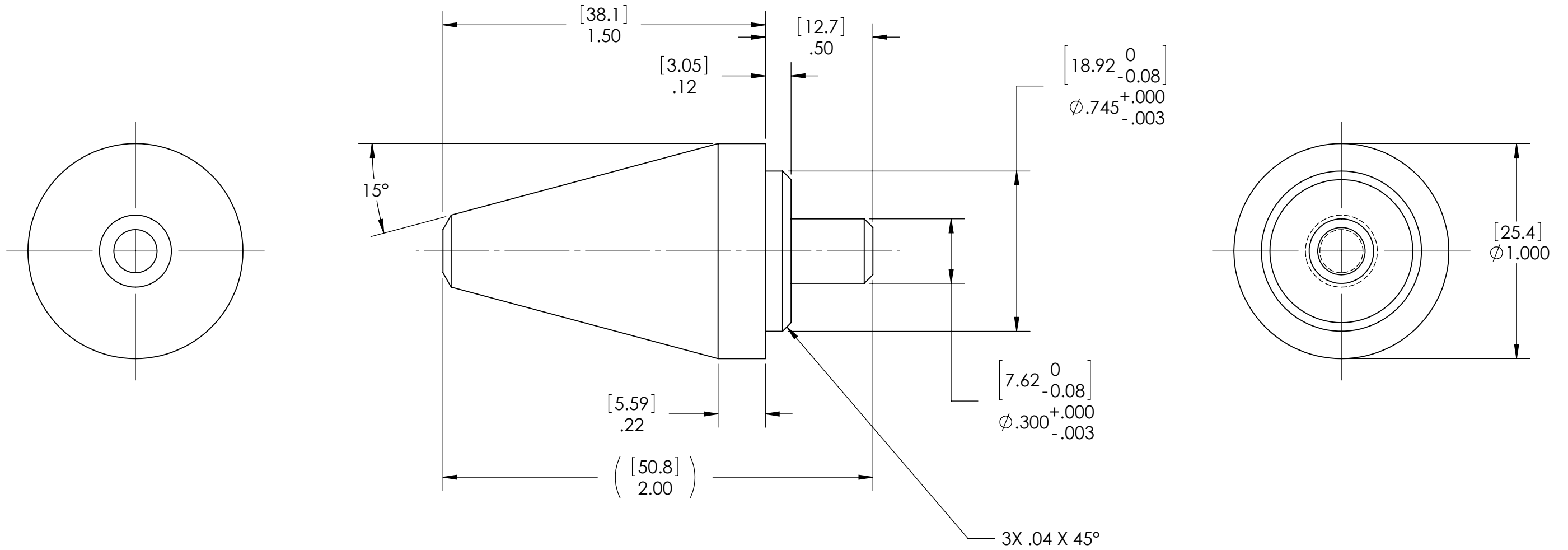
3

2

1

NOTES CONTINUED:
 ⑤ BAG ALL ITEMS AND MARK OR TAG EACH BAG WITH DRAWING NUMBER, REVISION, AND QUANTITY. EXAMPLE: DXXXXXX-VY, QTY: TBD

REV.	DATE	DCN #	DRAWING TREE #
V1	26 OCT 2009	E0900383	
V2	16 NOV 2009	E0900412	



D0902495 GUIDE, OPTIC, COC CONTAINER, ADVANCED LIGO, PART PDM REV: X-001, DRAWING PDM REV: X-001

NOTES AND TOLERANCES: (UNLESS OTHERWISE SPECIFIED)	
DIMENSIONS ARE IN INCHES	
TOLERANCES: .XX $\pm .01$.XXX $\pm .005$ ANGULAR $\pm 0.5^\circ$	
1. INTERPRET DRAWING PER ASME Y14.5-1994.	2. REMOVE ALL SHARP EDGES, R.02 MIN.
3. DO NOT SCALE FROM DRAWING.	
4. ALL MACHINING FLUIDS MUST BE FULLY SYNTHETIC, FULLY WATER SOLUBLE AND FREE OF SULFUR, SILICONE, AND CHLORINE.	
MATERIAL PFA440 HP (PRESHRUNK)	FINISH 32 μ inch

CALIFORNIA INSTITUTE OF TECHNOLOGY MASSACHUSETTS INSTITUTE OF TECHNOLOGY		PART NAME GUIDE, OPTIC, COC CONTAINER	
SYSTEM ADVANCED LIGO	SUB-SYSTEM COC	DESIGNER K. BUCKLABD	DATE 26 OCT 2009
NEXT ASSY D0902001	SCALE 2:1	DRAWN K. BUCKLAND	DATE 26 OCT 2009
	PROJECTION:	CHECKER	APPROVAL
		SIZE DWG. NO. B D0902495	REV. v2
		SHEET 1 OF 1	

8

7

6

5

4

3

2

1