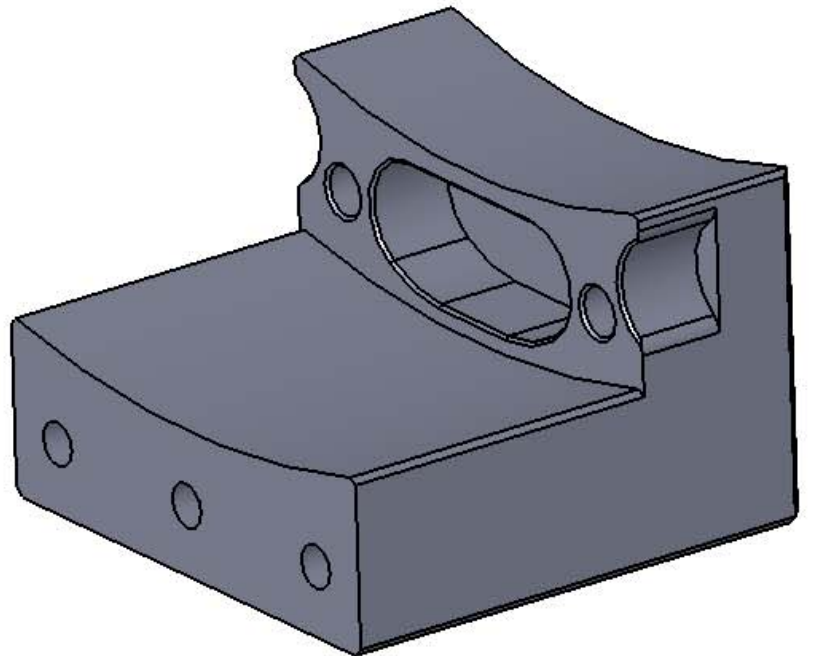
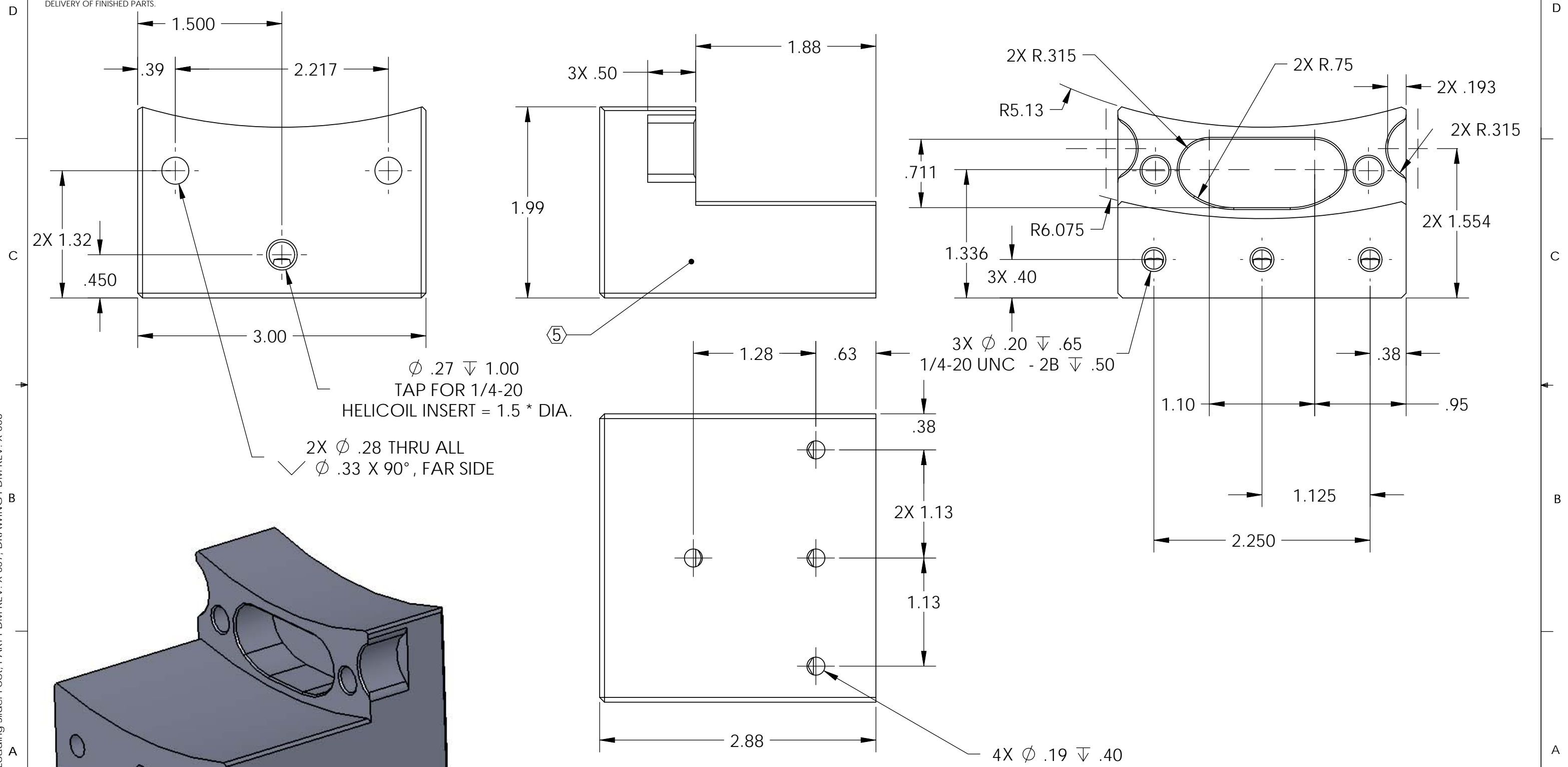


D0902546 Trillium Pod Loading Slider Foot, PART PDM REV: X-007, DRAWING PDM REV: X-006

NOTES CONTINUED:
 5. SCRIBE, ENGRAVE, OR MECHANICALLY STAMP (NO INKS OR DYES) DRAWING PART NUMBER AND REVISION ON NOTED SURFACE FOLLOWED ON THE NEXT LINE BY A THREE DIGIT SERIAL NUMBER. SERIAL NUMBERS START AT 001 FOR THE FIRST ARTICLE AND PROCEED CONSECUTIVELY. USE .07" HIGH CHARACTERS. EXAMPLE: DXXXXXX-VY, S/N 001. A VIBRATORY TOOL MAY BE USED.
 6. MACHINE ALL SURFACES TO REMOVE OXIDES AND MILL FINISH. ABRASIVE REMOVAL TECHNIQUES ARE NOT ACCEPTABLE.
 7. ALL THREADED INSERTS TO BE INSTALLED BY LIGO PERSONEL, AFTER DELIVERY OF FINISHED PARTS.

REV.	DATE	DCN #	DRAWING TREE #
v1	26 Jan. 2010	E0900443	T0900600



NOTES AND TOLERANCES: (UNLESS OTHERWISE SPECIFIED)				LIGO CALIFORNIA INSTITUTE OF TECHNOLOGY MASSACHUSETTS INSTITUTE OF TECHNOLOGY		PART NAME	
DIMENSIONS ARE IN INCHES TOLERANCES: .XX ± .015 .XXX ± .005 ANGULAR ± .5°				1. INTERPRET DRAWING PER ASME Y14.5-1994. 2. BREAK ALL EDGES AND CORNERS .03 X 45° 3. DO NOT SCALE FROM DRAWING. 4. ALL MACHINING FLUIDS MUST BE FULLY SYNTHETIC, FULLY WATER SOLUBLE AND FREE OF SULFUR, SILICONE, AND CHLORINE.		Trillium Pod, Loading, Slider Foot	
MATERIAL		FINISH		SYSTEM	SUB-SYSTEM	DESIGNER	DATE
6061-T6 Al		63 μinch		ADVANCED LIGO	SEI	S.BARNUM	1 Dec. 2009
NEXT ASSY		D0902547		CHECKER	APPROVAL	M.HILLARD	26 Jan. 2010
						F.MATICHARD	26 Jan. 2010
						K.MASON	26 Jan. 2010
				SIZE	DWG. NO.	REV.	
				B	D0902546	v1	
				SCALE:	PROJECTION:	SHEET 1 OF 1	
				1:1	ASME		