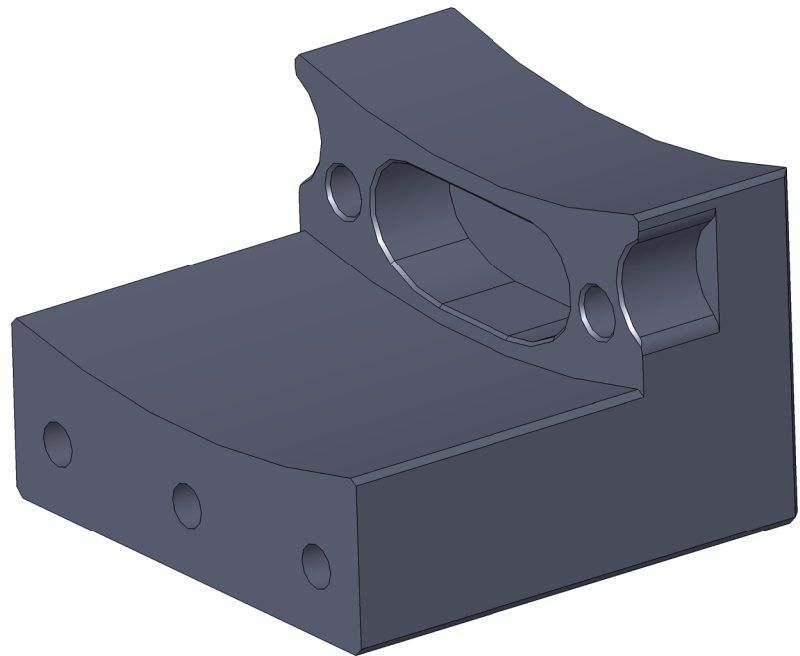
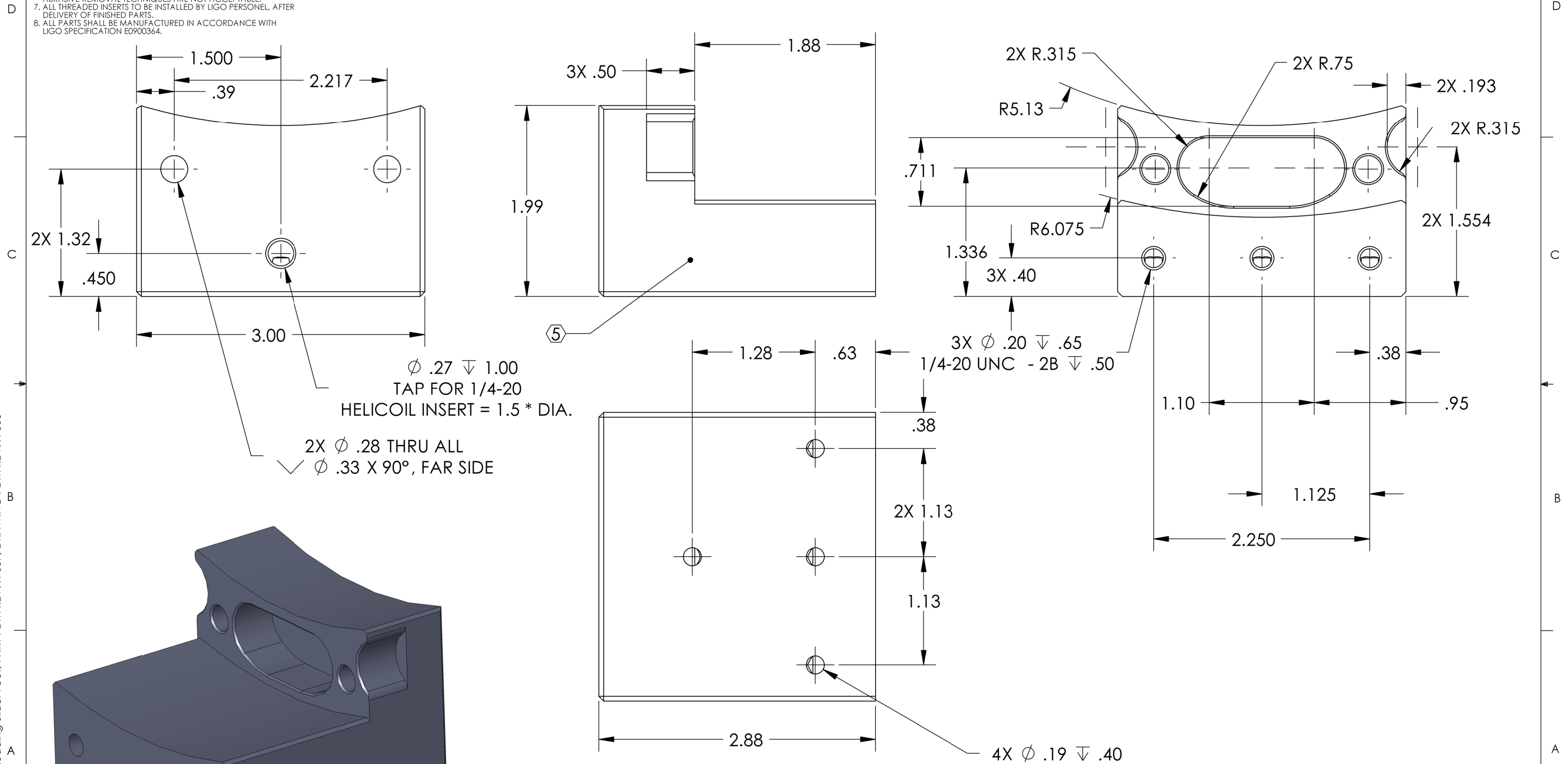


D0902546 Trillium Pod Loading Slider Foot, PART PDM REV: X-007, DRAWING PDM REV: X-006

NOTES CONTINUED:
 5. SCRIBE, ENGRAVE, OR MECHANICALLY STAMP (NO INKS OR DYES) DRAWING PART NUMBER, REVISION (AND VARIANT OR "TYPE" IF APPLICABLE) ON NOTED SURFACE OF PART FOLLOWED ON THE NEXT LINE WITH A THREE DIGIT SERIAL NUMBER. SERIAL NUMBERS START AT 001 FOR THE FIRST ARTICLE AND PROCEED CONSECUTIVELY. USE MINIMUM 0.12" HIGH CHARACTERS, UNLESS THE SIZE OF THE PART DICTATES SMALLER CHARACTERS. A VIBRATORY TOOL MAY BE USED.
 EXAMPLE: DXXXXXX-VY, TYPE-XX, S/N XXX
 6. MACHINE ALL SURFACES TO REMOVE OXIDES AND MILL FINISH. ABRASIVE REMOVAL TECHNIQUES ARE NOT ACCEPTABLE.
 7. ALL THREADED INSERTS TO BE INSTALLED BY LIGO PERSONEL, AFTER DELIVERY OF FINISHED PARTS.
 8. ALL PARTS SHALL BE MANUFACTURED IN ACCORDANCE WITH LIGO SPECIFICATION E0900364.

REV.	DATE	DCN #	DRAWING TREE #
V1	26 Jan. 2010	E0900443-X0	E1000025
V2	22 Mar 2010	E0900443-V1	E1000025



NOTES AND TOLERANCES: (UNLESS OTHERWISE SPECIFIED)				LIGO CALIFORNIA INSTITUTE OF TECHNOLOGY MASSACHUSETTS INSTITUTE OF TECHNOLOGY		PART NAME	
DIMENSIONS ARE IN INCHES TOLERANCES: .XX $\pm .015$.XXX $\pm .005$ ANGULAR $\pm .5^\circ$				1. INTERPRET DRAWING PER ASME Y14.5-1994. 2. BREAK ALL EDGES AND CORNERS .03 X 45° 3. DO NOT SCALE FROM DRAWING. 4. ALL MACHINING FLUIDS MUST BE FULLY SYNTHETIC, FULLY WATER SOLUBLE AND FREE OF SULFUR, SILICONE, AND CHLORINE.		Trillium Pod, Loading, Slider Foot	
MATERIAL 6061-T6 Al		FINISH 63 μ inch		SYSTEM ADVANCED LIGO SUB-SYSTEM SEI		DESIGNER S.BARNUM 1 Dec. 2009 DRAFTER M.HILLARD 26 Jan. 2010 CHECKER F.MATICHARD 26 Jan. 2010 APPROVAL K.MASON 26 Jan. 2010	
NEXT ASSY D0902547				SIZE DWG. NO. B D0902546		REV. v2	
				SCALE: 1:1		PROJECTION: SHEET 1 OF 1	