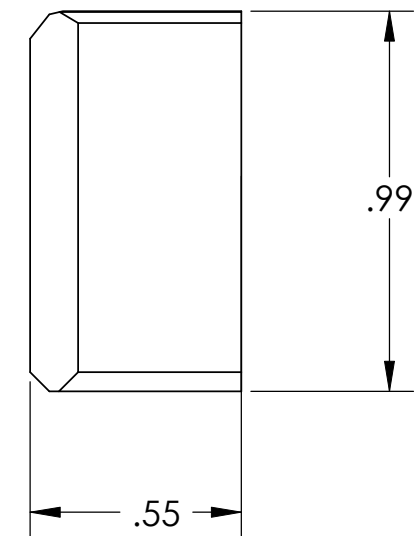
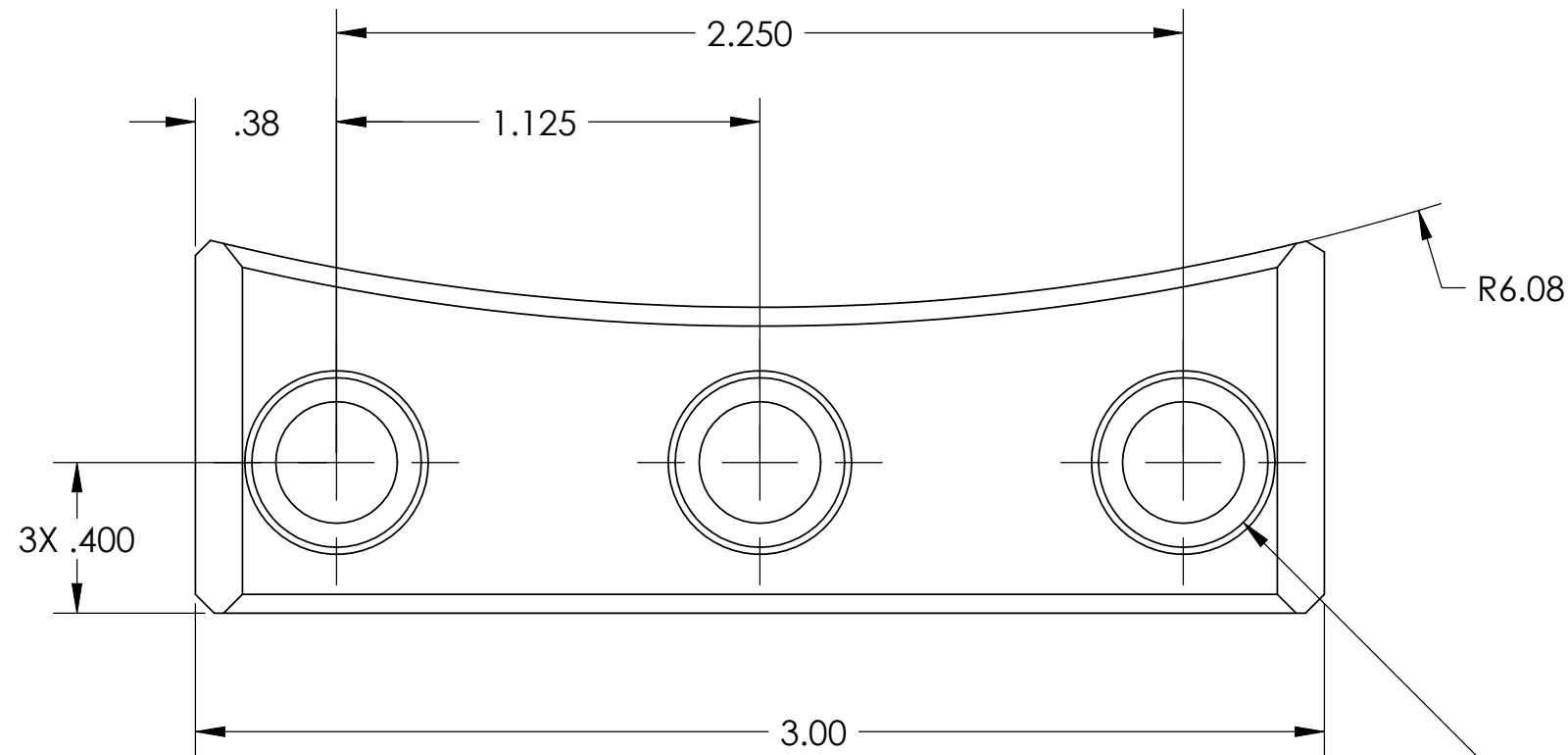


D0902548 Trillium Pod Loading Slider Foot Slider, PART PDM REV: X-005, DRAWING PDM REV: X-003

NOTES CONTINUED:
 5. SCRIBE, ENGRAVE, OR MECHANICALLY STAMP (NO INKS OR DYES) DRAWING PART NUMBER AND REVISION ON NOTED SURFACE FOLLOWED ON THE NEXT LINE BY A THREE DIGIT SERIAL NUMBER. SERIAL NUMBERS START AT 001 FOR THE FIRST ARTICLE AND PROCEED CONSECUTIVELY. USE .07" HIGH CHARACTERS. EXAMPLE: DXXXXXX-VY, S/N 001. A VIBRATORY TOOL MAY BE USED.
 6. MACHINE ALL SURFACES TO REMOVE OXIDES AND MILL FINISH. ABRASIVE REMOVAL TECHNIQUES ARE NOT ACCEPTABLE.

REV.	DATE	DCN #	DRAWING TREE #
v1	18 Dec. 2009	E0900443	T0900600



3X ϕ .32 THRU ALL
 \square ϕ .45 ∇ .31
 \checkmark ϕ .49 X 90°, NEAR SIDE
 \checkmark ϕ .37 X 90°, FAR SIDE

2X .13X 45°

DO NOT BREAK BOTTOM EDGE

5

NOTES AND TOLERANCES: (UNLESS OTHERWISE SPECIFIED)				LIGO CALIFORNIA INSTITUTE OF TECHNOLOGY MASSACHUSETTS INSTITUTE OF TECHNOLOGY		PART NAME						
DIMENSIONS ARE IN INCHES		1. INTERPRET DRAWING PER ASME Y14.5-1994. 2. BREAK ALL EDGES AND CORNERS .06 X 45°. 3. DO NOT SCALE FROM DRAWING. 4. ALL MACHINING FLUIDS MUST BE FULLY SYNTHETIC, FULLY WATER SOLUBLE AND FREE OF SULFUR, SILICONE, AND CHLORINE.		SYSTEM ADVANCED LIGO		SUB-SYSTEM SEI		Trillium Pod, Loading, Slider Foot, Slider				
TOLERANCES: .XX ± .015 .XXX ± .005		MATERIAL PFA440		FINISH 63 μinch		NEXT ASSY D0902547		DESIGNER S.BARNUM	18 Dec. 2009	SIZE B	DWG. NO. D0902548	REV. v1
ANGULAR ± .5°		APPROVAL K.MASON		18 Dec. 2009		SCALE: 2:1		PROJECTION:		SHEET 1 OF 1		