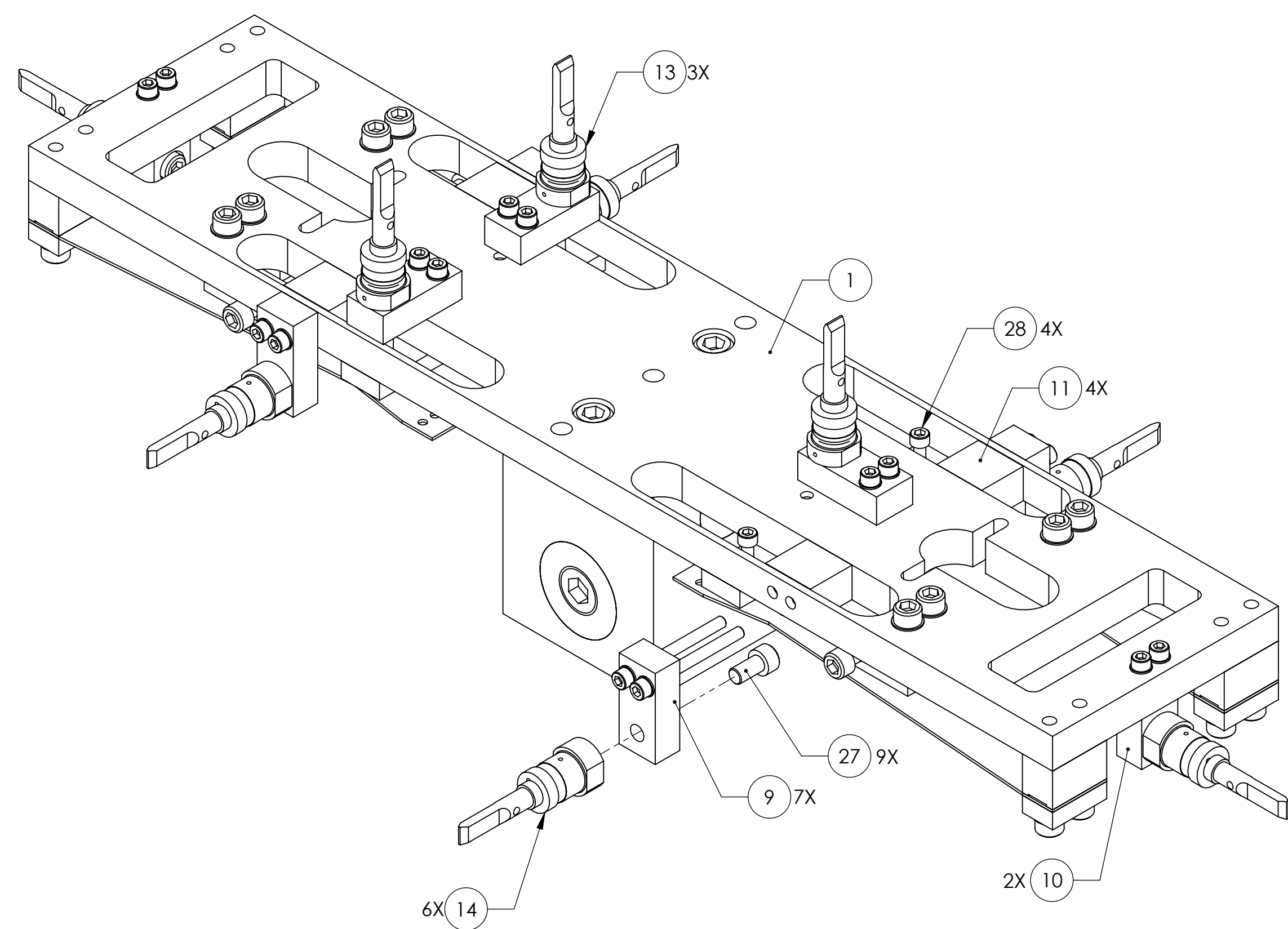


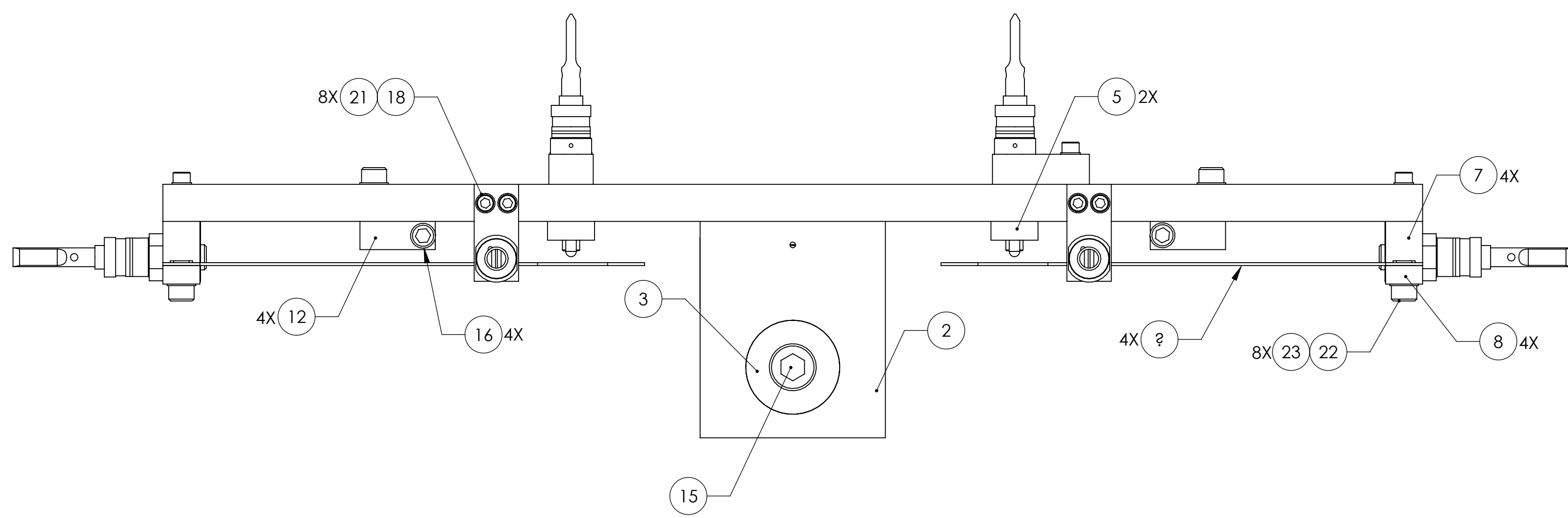
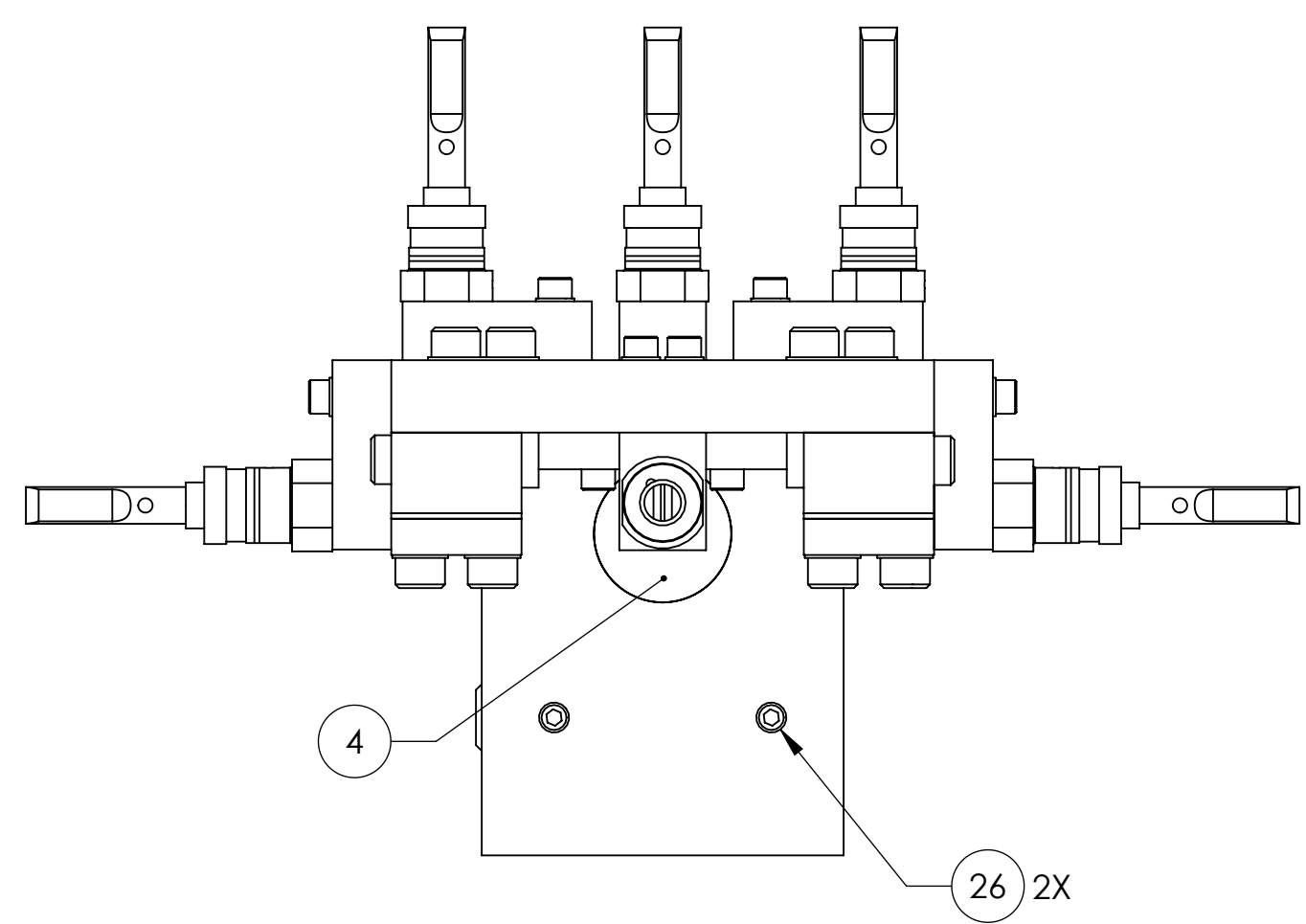
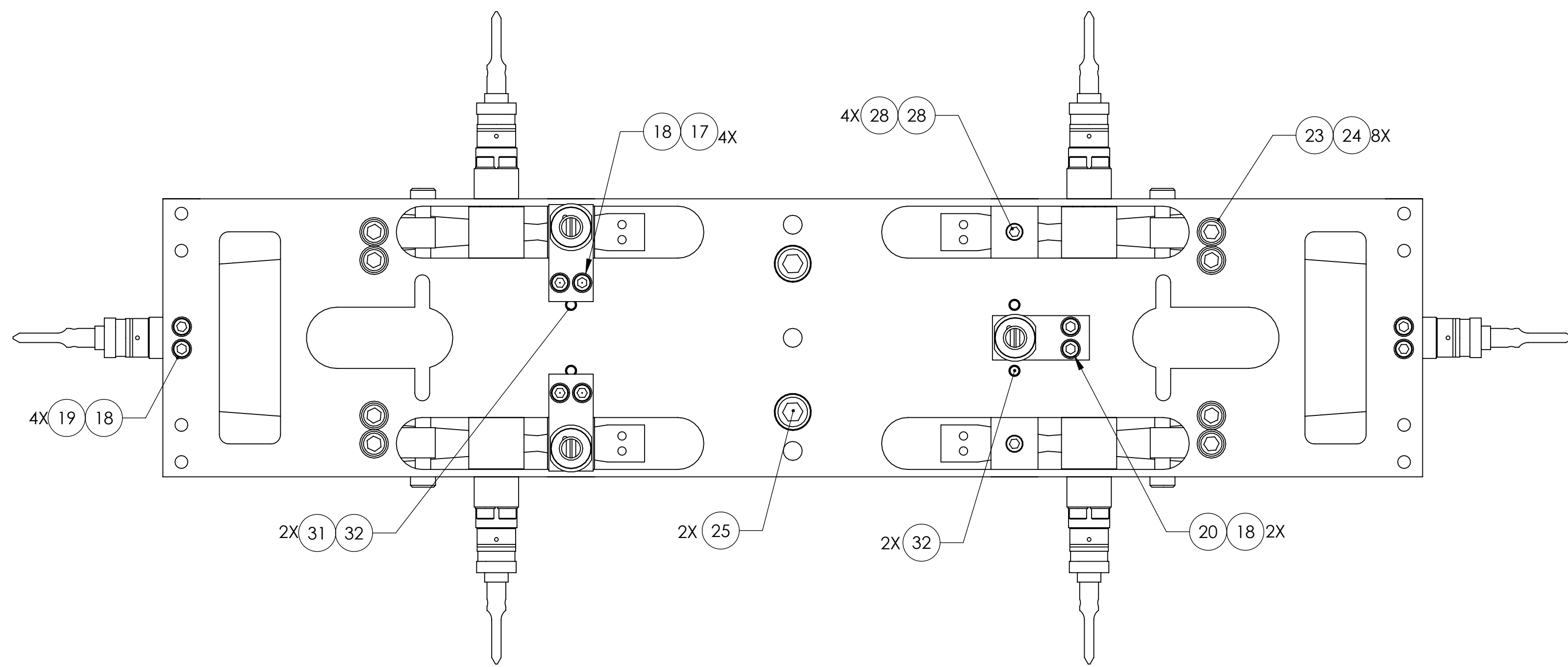
REV.	DATE	DCN #	DRAWING TREE #
A	24 JUN 2004	E040303-00	-
v1	19 MAR 2010	E0900501	E0900353
-	-	-	-

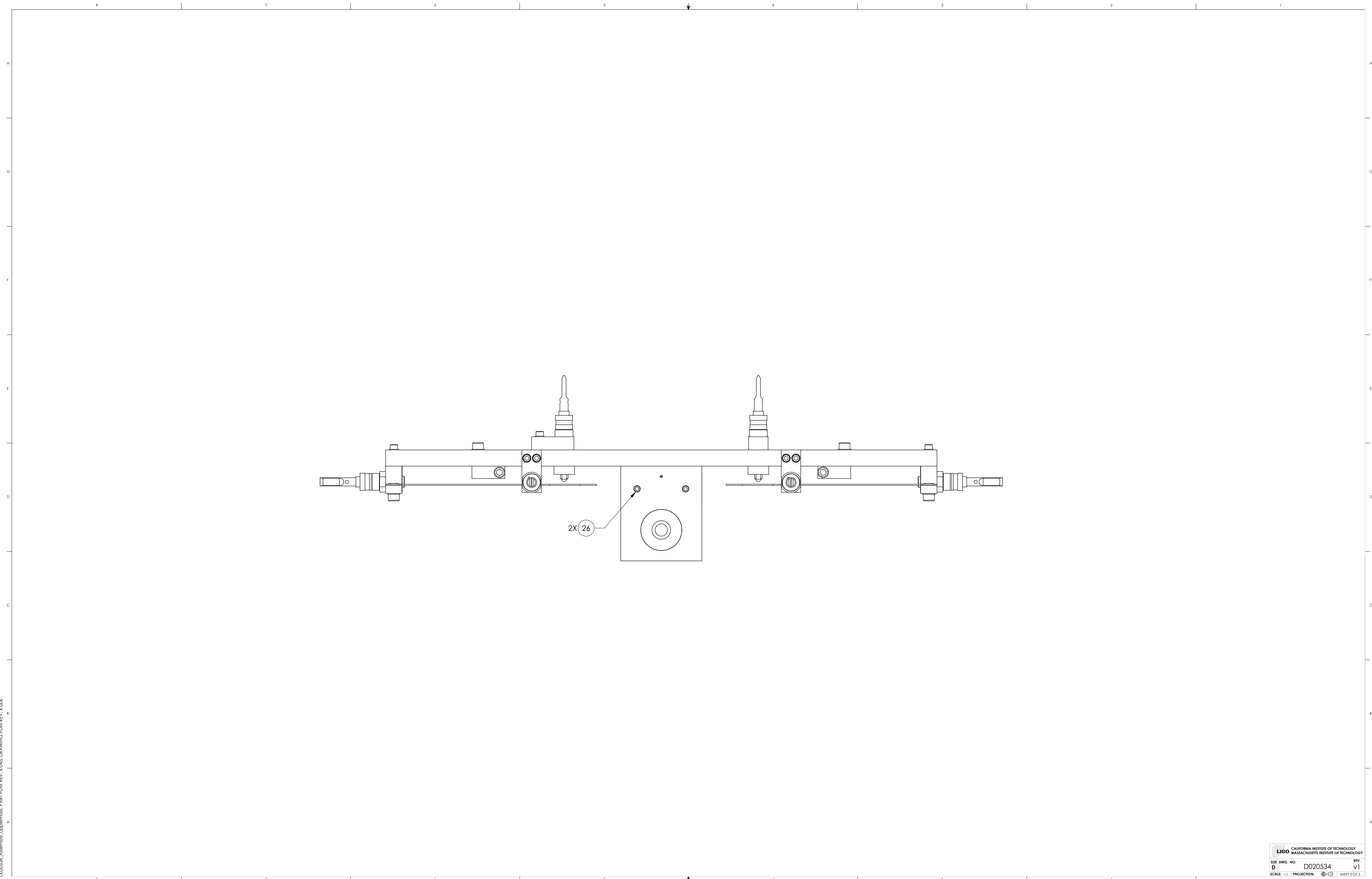


34	D080761	HSTS LOWER BLADE	MARAGING STEEL C250	4		4
ALT	D020677	LIBRARY OF CLAMPS	--	ALT	-	ALT
32	-	SCREW, SOCKET HEAD CAP, #4-40 UNC-2A X 0.5 LONG	300 SSSL	4	-	4
31	1185-04EN336	HELICOIL, #4-40 X 0.336 LONG	NITRONIC 60	4	-	4
30	1185-4EN250	HELICOIL, 1/4-20 X 0.25 LONG	NITRONIC 60	1	-	1
29	1185-04EN168	HELICOIL, #4-40 X 0.168 LONG	NITRONIC 60	4	-	4
28	-	SCREW, SOCKET HEAD CAP, #4-40 UNC-2A X 0.625 LONG	300 SSSL	4	-	4
27	-	SCREW, SOCKET HEAD CAP, #8-32 UNC-2A X 0.3125 LONG	300 SSSL	9	-	9
26	-	SCREW, SOCKET SET, #8-32 UNC-2A X 0.25 LONG	Ag-PLATED 300 SSSL	4	1	5
25	-	SCREW, SOCKET HEAD CAP, 1/4-20 UNC-2A X 0.375 LONG	Ag-PLATED 300 SSSL	2	1	3
24	-	SCREW, SOCKET HEAD CAP, #8-32 UNC-2A X 0.625 LONG	300 SSSL	8	2	10
23	-	WASHER, FLAT, #8 (NAS 620-C8L OR EQUIVALENT)	300 SSSL	16	3	19
22	-	SCREW, SOCKET HEAD CAP, #8-32 UNC-2A X 1 LONG	Ag-PLATED 300 SSSL	8	2	10
21	-	SCREW, SOCKET HEAD CAP, #4-40 UNC-2A X 1.25 LONG	Ag-PLATED 300 SSSL	8	2	10
20	-	SCREW, SOCKET HEAD CAP, #4-40 UNC-2A X 0.625 LONG	Ag-PLATED 300 SSSL	2	2	4
19	-	SCREW, SOCKET HEAD CAP, #4-40 UNC-2A X 0.625 LONG	300 SSSL	4	2	6
18	-	WASHER, FLAT, #4 (NAS 620-C4L OR EQUIVALENT)	300 SSSL	18	3	21
17	-	SCREW, SOCKET HEAD CAP, #4-40 UNC-2A X 0.625 LONG, VENTED	Ag-PLATED 300 SSSL	4	1	5
16	-	SCREW, SOCKET HEAD CAP, #8-32 UNC-2A X 0.75 LONG	300 SSSL	4	-	4
15	-	SCREW, SOCKET SET, 0.5-20 UNF-2A X 2 LONG	Ag-PLATED 300 SSSL	1	-	1
14	D0902418	MAGNET/FLAG ASSY (LONG), UPPER MASS	N/A	6	1	7
13	D0902492	MAGNET/FLAG ASSY (SHORT), UPPER MASS	N/A	3	1	4
12	D020482	SCREW DRIVE SYSTEM, UPPER MASS	6061-T6 Al	4	1	5
11	D020211	MAGNET HOLDER BRACE	6061-T6 Al	4	1	5
10	D020199	MAGNET-FLAG BASE (SHORT), UPPER MASS	6061-T6 Al	2	1	3
9	D0902493	MAGNET/FLAG ASSY BASE PLATE, UPPER MASS	6061-T6 Al	7	1	8
8	D020308	LOWER BLADE CLAMP, LOWER SIDE	304, 316 OR 302 SSSL	4	1	5
7	D020119	LOWER BLADE CLAMP, UPPER SIDE	304, 316 OR 302 SSSL	4	1	5
ALT	D1001686	REPLACEMENT WEIGHT, UPPER MASS, HSTS	304, 316 OR 302 SSSL	ALT	-	ALT
5	D0902030	BLADE GUARD, UPPER MASS	304, 316 OR 302 SSSL	2	-	2
4	D020676	ROLL INSERT, T-SECTION	304, 316 OR 302 SSSL	1	-	1
3	D020137	PITCH INSERT FOR T-SECTION	304, 316 OR 302 SSSL	1	-	1
2	D020136	T-SECTION FOR UPPER MASS	304, 316 OR 302 SSSL	1	-	1
1	D020134	MAIN SECTION UPPER MASS	304, 316 OR 302 SSSL	1	-	1
ITEM NO.	PART NUMBER	DESCRIPTION	MATERIAL	REQ	SPARE	TOTAL

CALIFORNIA INSTITUTE OF TECHNOLOGY MASSACHUSETTS INSTITUTE OF TECHNOLOGY		PART NAME		UPPER MASS ASSEMBLY		
SYSTEM	ADVANCED LIGO	SUB-SYSTEM	SUS	DESIGNER	C. TORRIE	11 NOV 2002
				DRAFTER	B. MOORE	29 OCT 2009
				CHECKER	M. MEYER	29 OCT 2009
				APPROVAL		
NEXT ASSY	D020535		SIZE	D	DWG. NO.	D020534
			SCALE:	1:1	PROJECTION:	
						SHEET 1 OF 3

D020534-Assembly_Lowermass_PDR_PDM_REV-X-045_DRAWING_PDM_REV-X-006





D020534_Asembly_Lippemuss_PART.PDM.REV.X-045_DRAWING.PDM.REV.X-006