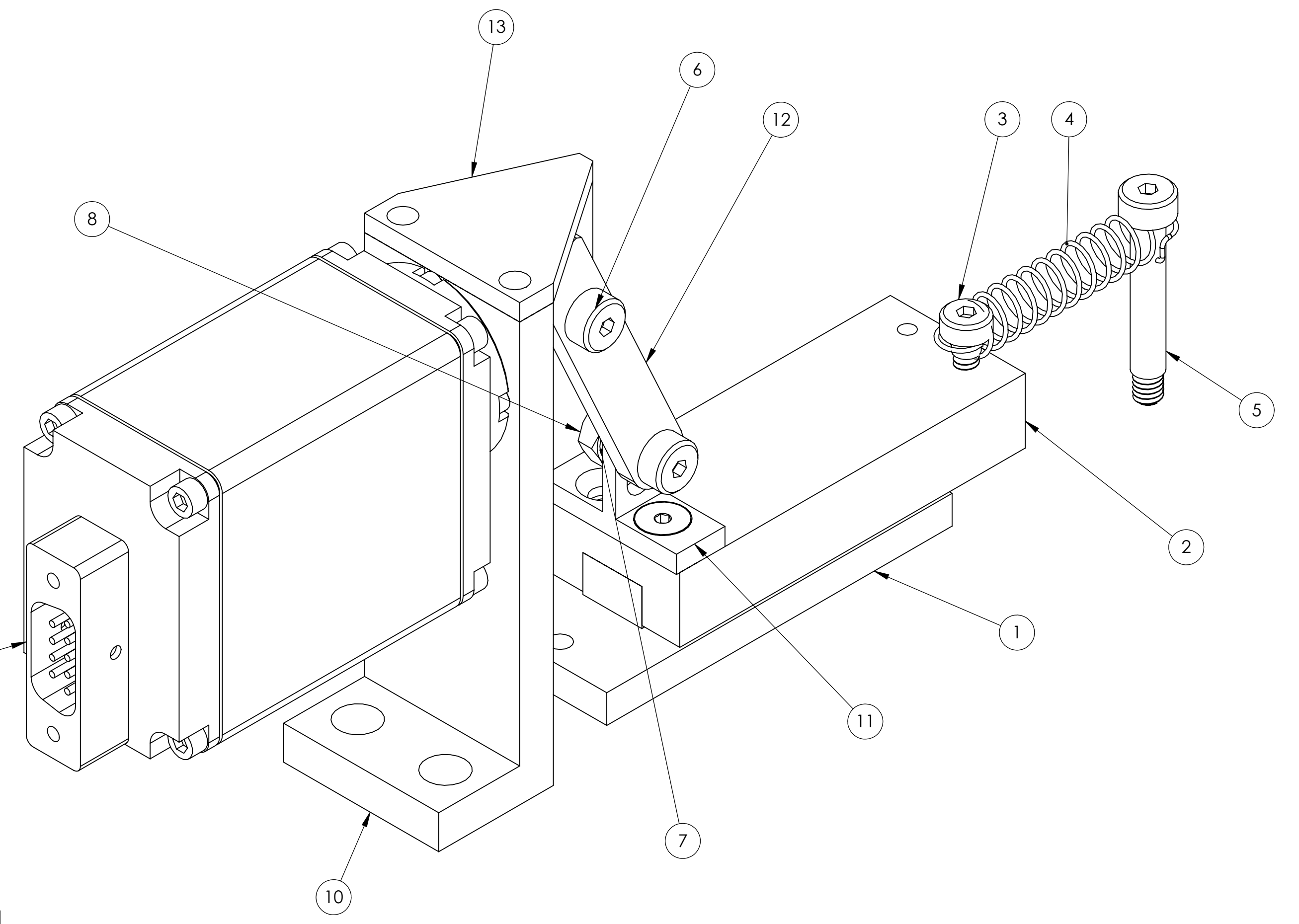
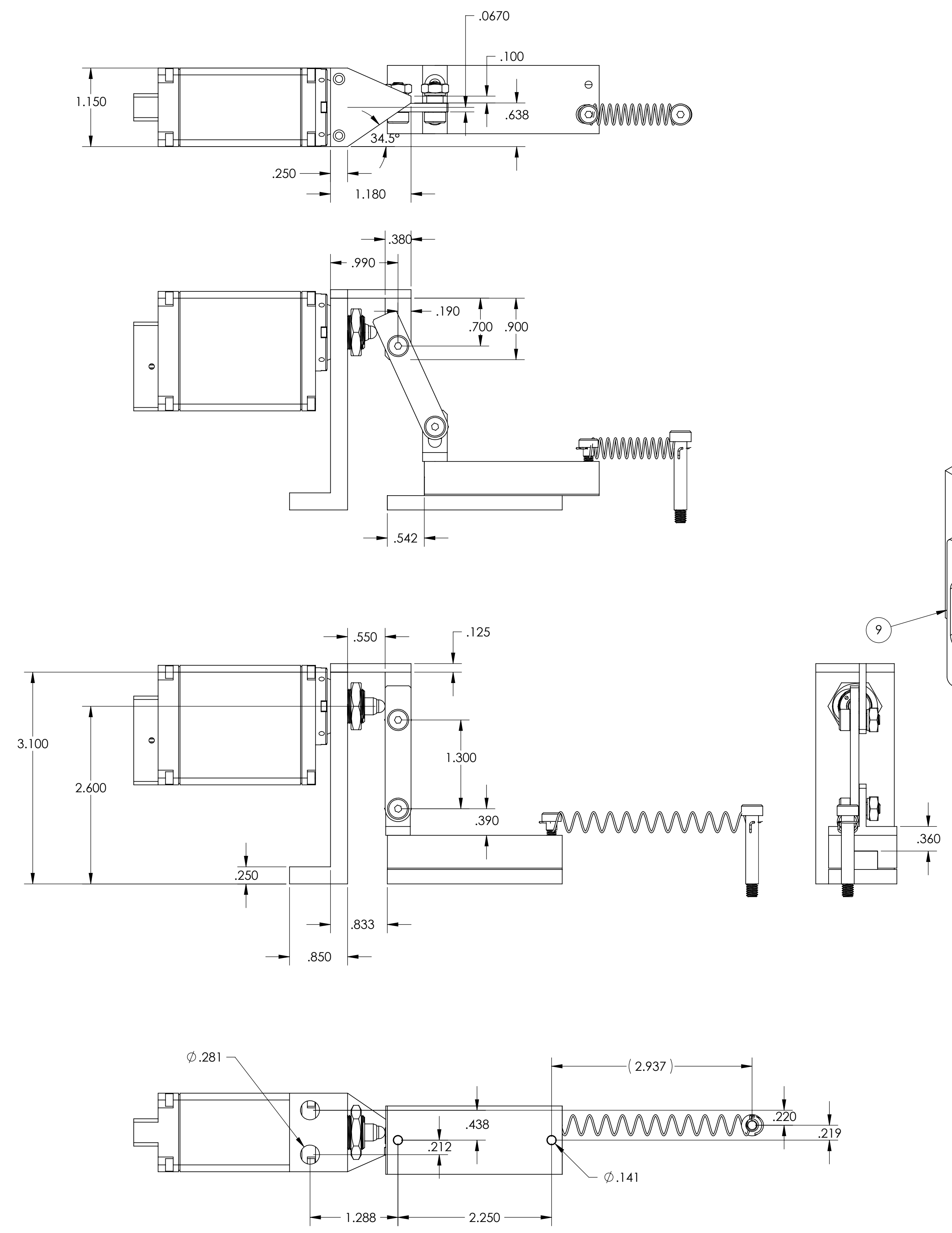


NOTES CONTINUED:
 5.

REV.	DATE	DCN #	DRAWING TREE #
-	-	-	-
-	-	-	-
-	-	-	-



ITEM NO.	PART NUMBER	DESCRIPTION	MATERIAL	Def aut /QT Y.
14			Material <not specified>	1
13	D0902755	PICOMOTOR PIVOT BRACKET	6061-T6 Al	1
12	D0902750	PICOMOTOR PIVOT LEVER	6061-T6 Al	1
11	D0902753	PICOMOTOR LINEAR TRAVEL CONTROL BRKT	6061-T6 Al	1
10	D0902752	PICOMOTOR MITG BRACKET	6061-T6 Al	1
9	8330	PICOMOTOR ACTUATOR .12"TR-NEWFOCUS	N/A	1
8		HEX NUT, #8-32	300 SSSL	2
7		WASHER, FLAT, #8 (NAS 620-C8 OR EQUIVALENT)	300 SSSL	2
6	94035A203	SHOULDER SCREW #8-32 X .25L	300 SSSL	2
5	94035A208	SHOULDER SCREW #8-32X1" McMaster	300 SSSL	1
4	9654K712	EXTENSION SPRING_McMASTER CARR	STEEL MUSIC WIRE	1
3	94035A523	SHOULDER SCREW #6-32X.125 McMaster CARR	18-8 SS	1
2	M-2SS Special	BALL SLIDES ISOTECHINC	6061-T6 Al	1
1	D0900165	COUNTER MASS BLOCK	6061-T6 Al	1

NOTES AND TOLERANCES: (UNLESS OTHERWISE SPECIFIED)
 1. INTERPRET DRAWING PER ASME Y14.5-1994.
 2. REMOVE ALL SHARP EDGES, R.02 MIN.
 3. DO NOT SCALE FROM DRAWING.
 4. ALL MACHINING FLUIDS MUST BE FULLY SYNTHETIC, FULLY WATER SOLUBLE AND FREE OF SULFUR, SILICONE, AND CHLORINE.

DIMENSIONS ARE IN INCHES
 TOLERANCES:
 .XX ± .03
 .XXX ± .010
 ANGULAR ± 0.5°

MATERIAL: N/A
 FINISH: N/A μinch

LIGO CALIFORNIA INSTITUTE OF TECHNOLOGY
 MASSACHUSETTS INSTITUTE OF TECHNOLOGY

SYSTEM: ADVANCED LIGO
 SUB-SYSTEM: AOS
 NEXT ASSY: D0900623

PART NAME: PICOMOTOR MOTION CG CONTROL ASSY

DESIGNER: []
 DRAFTER: []
 CHECKER: []
 APPROVAL: []

SIZE: D
 DWG. NO.: D0902754
 SCALE: 1:1
 PROJECTION: []
 SHEET 1 OF 1

D0902754_AudiLIGO_AOS_PICOMOTOR 8330 Motion CG Control Assy, PART PDM REV., DRAWING PDM REV.