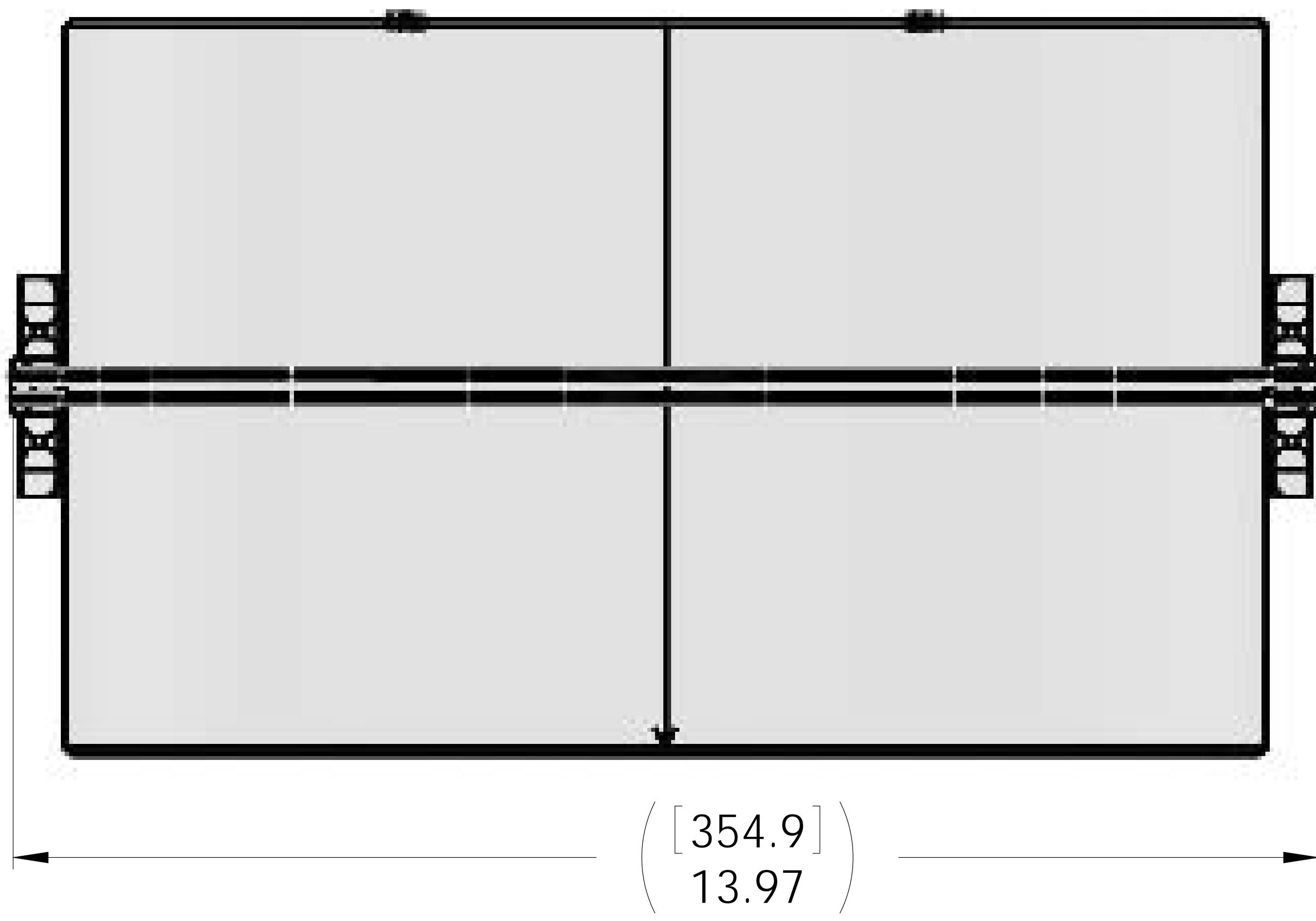
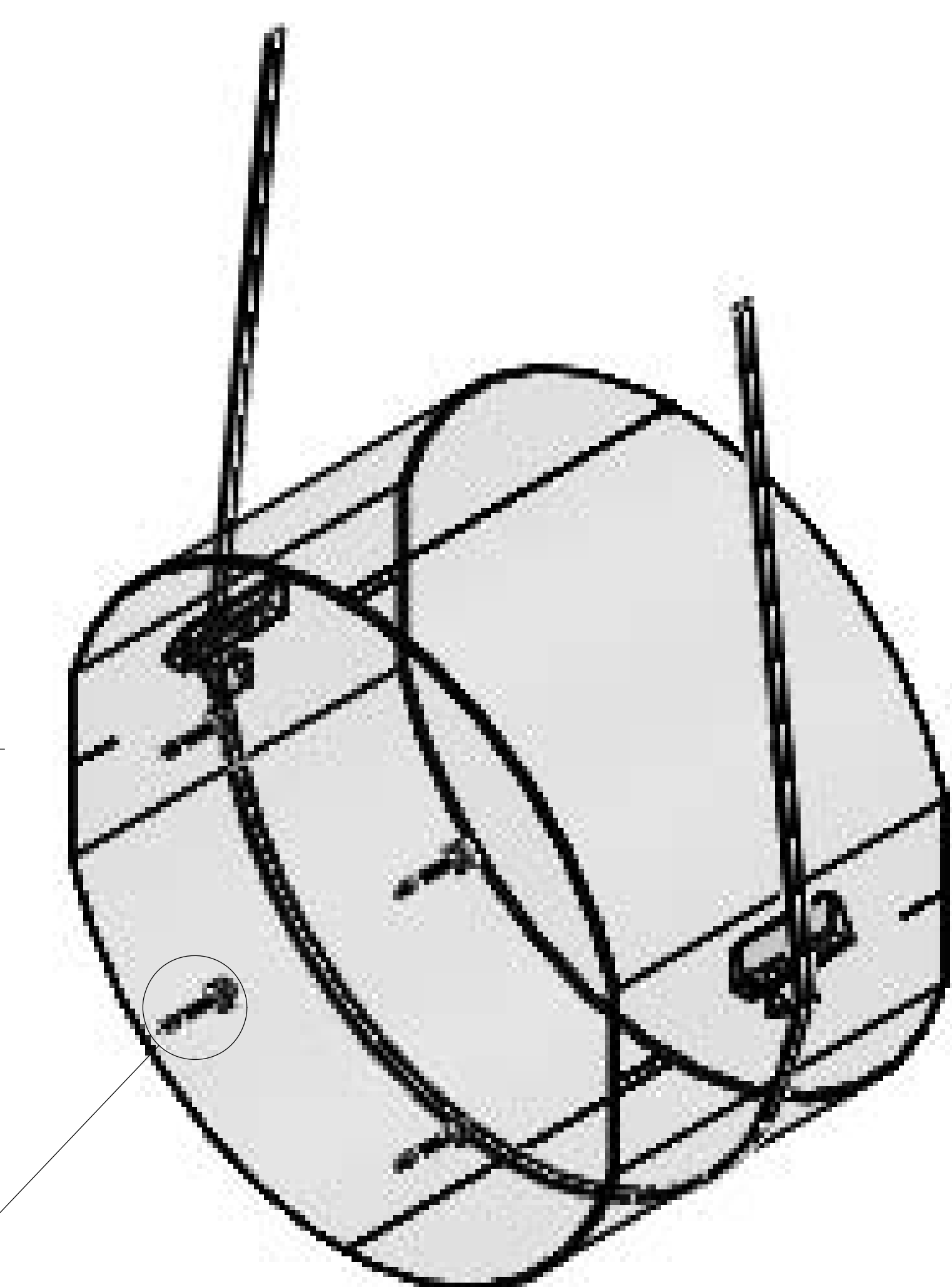
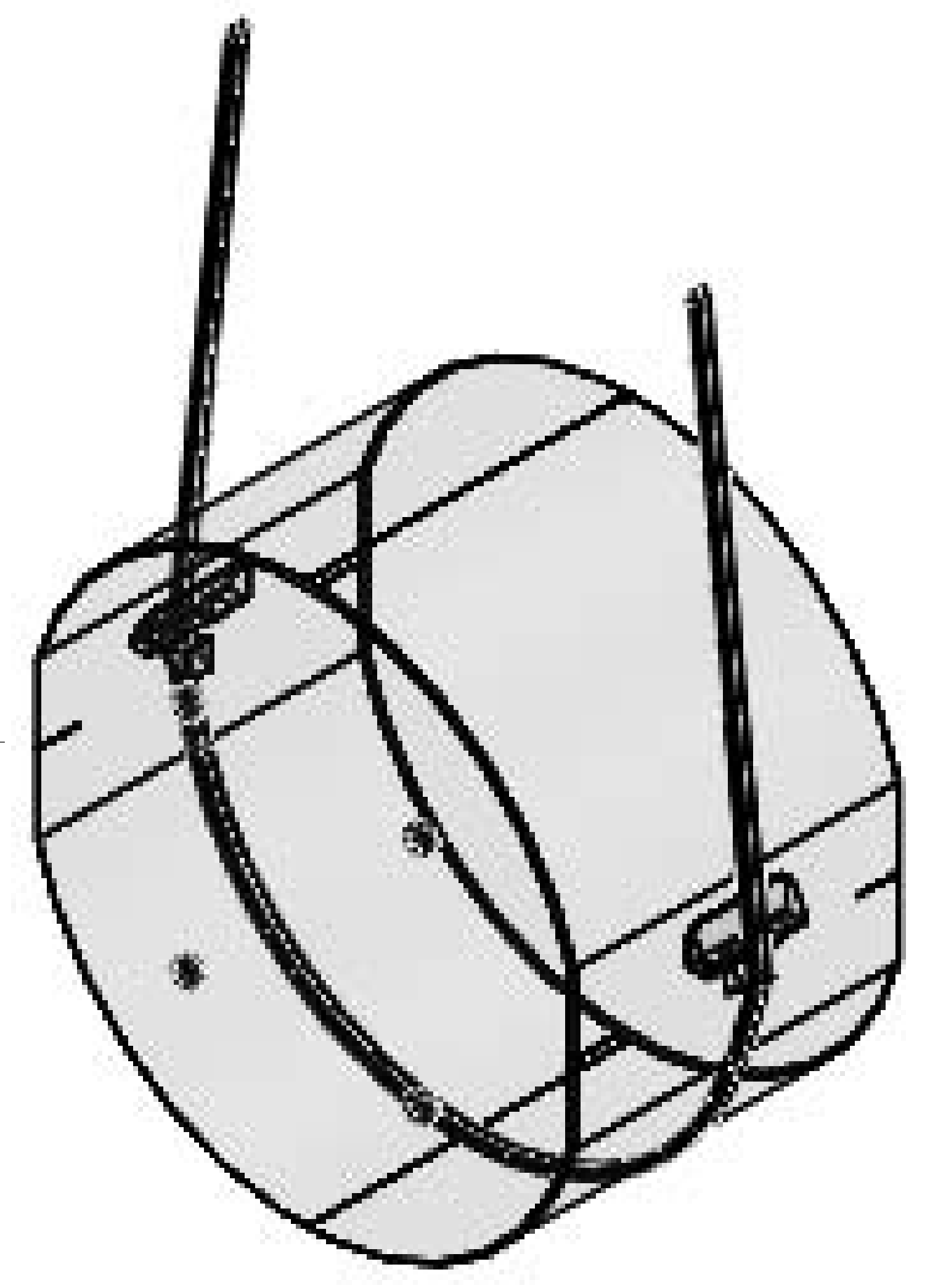
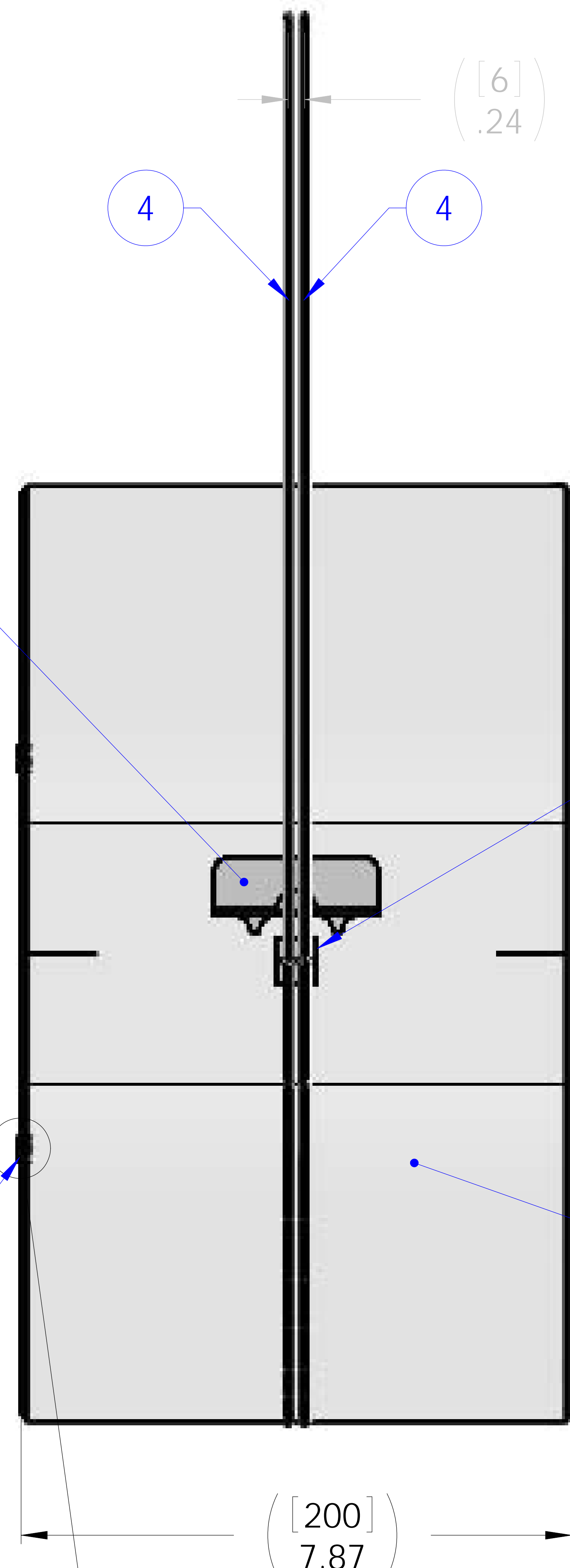
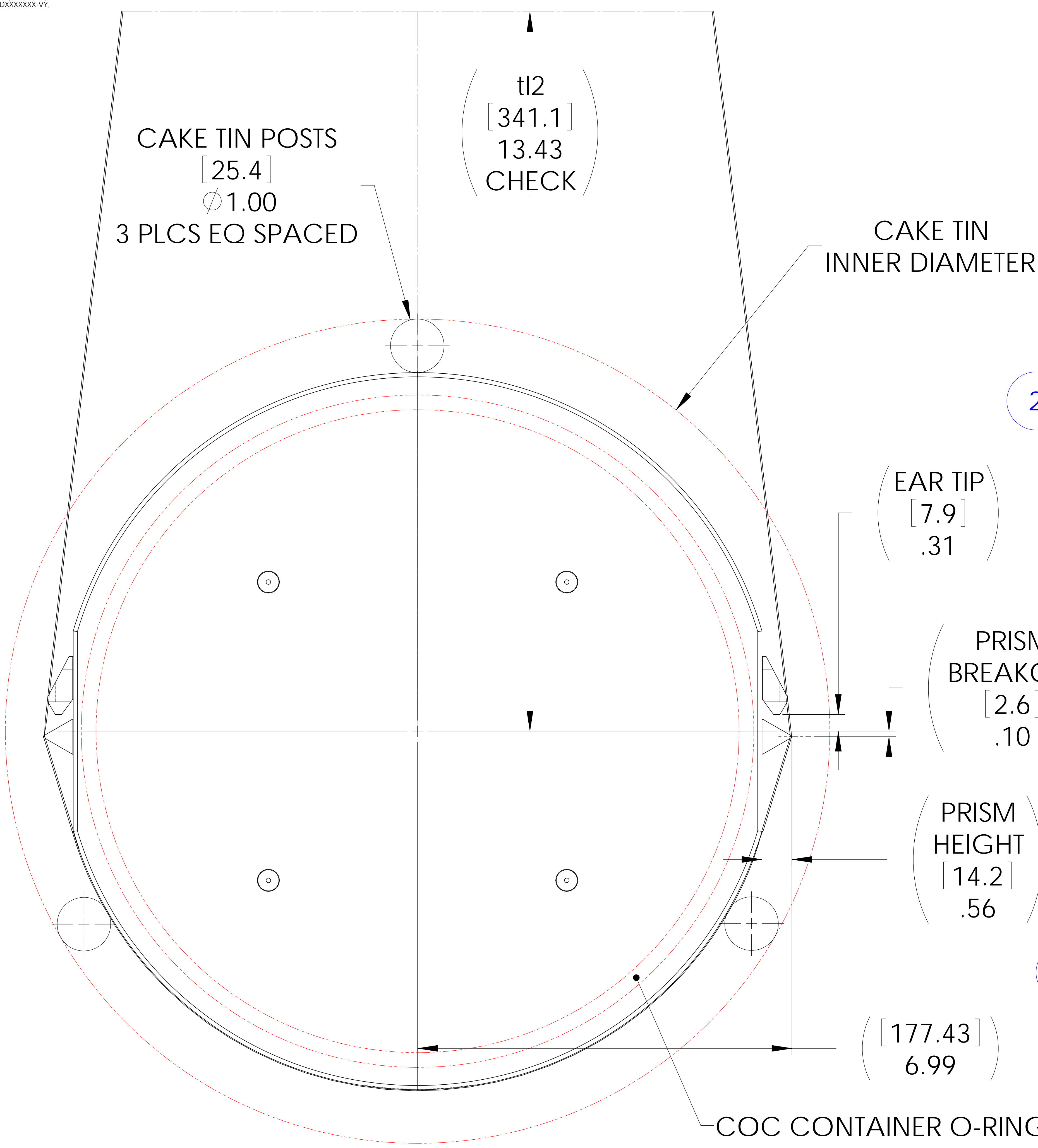


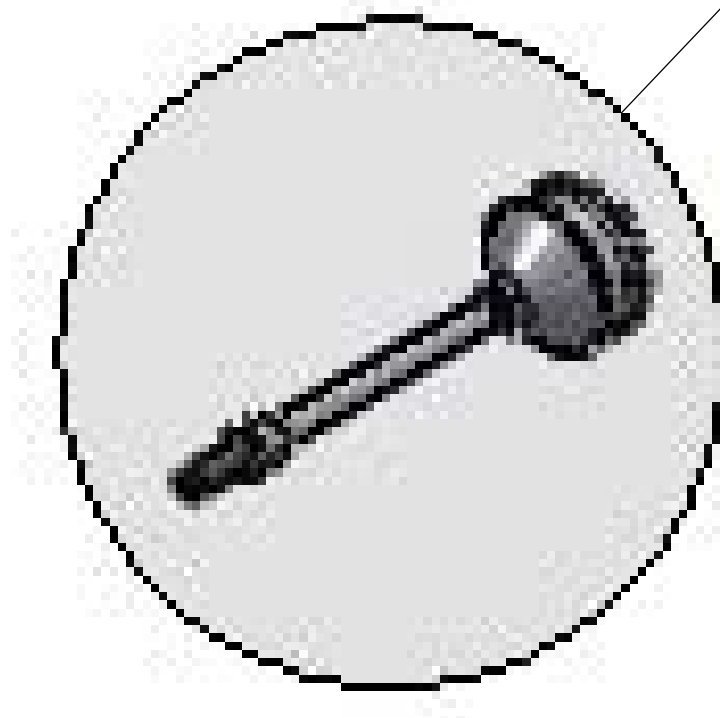
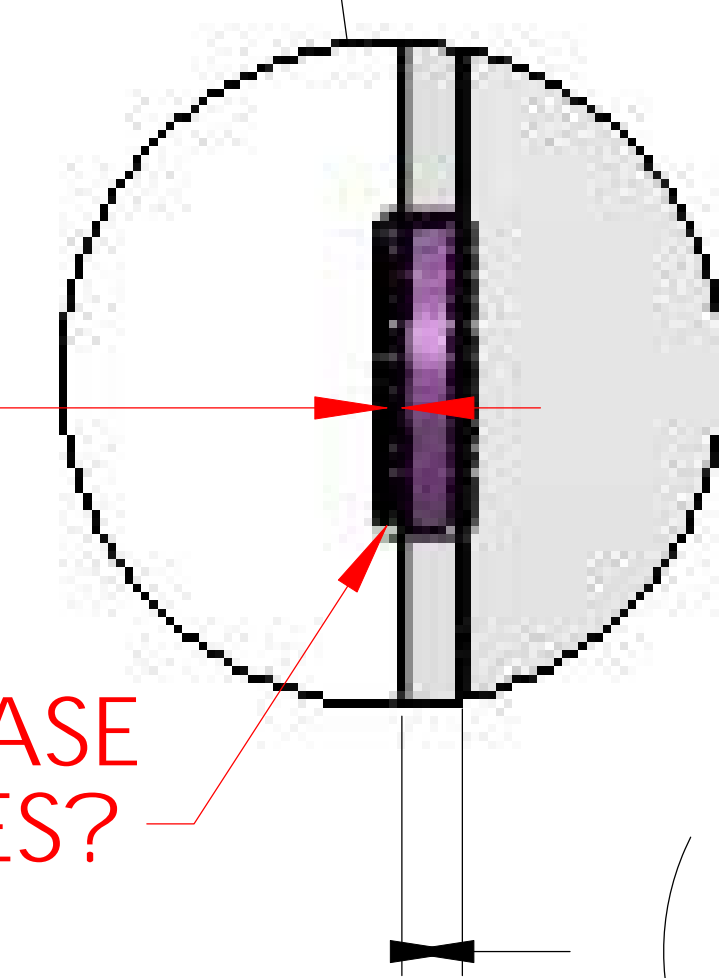
NOTES CONTINUED:
 ③ BAG ALL ITEMS AND MARK OR TAG EACH BAG WITH DRAWING NUMBER, REVISION, AND QUANTITY. EXAMPLE: D000000-VV, QTY: 100

REV.	DATE	DCN #	DRAWING TREE #
X-000	DEC09	(K. BUCKLAND)	
X-001	APR10	CORRECTED ASSEMBLY PARTS AND BOND LOCATIONS (R.JONES)	



([0.5])
 .02

D070237 MAGNET BASE
 CHECK FOR UPDATES?



ITEM NO.	PART NUMBER	DESCRIPTION	MATERIAL	REQ	SPARE	TOTAL
	D070234	MAGNET BASE (EXTERNAL SHIELDED MAGNETS)		1		0
5	D070234	PEN RE MASS MAGNETS (EXTERNAL SHIELDED MAGNETS)		4		4
4	D1001028	(mock) PM wire loop	plano wire	2		2
3	D080479	Wire Break-off Prism	SAPPHIRE	2		2
2	D090007	Production Ear_with recess	Suprasil 312	2		2
1	D080117	PENULTIMATE MASS	AS PER LIGO E0800-00	1		1

NOTES AND TOLERANCES (UNLESS OTHERWISE SPECIFIED)				PART NAME		SIZE		DWG. NO.		REV.	
1. INTERPRET DRAWING PER ASME Y14.5-1994. 2. REMOVE ALL SHARP EDGES, R.02 MIN. 3. DO NOT SCALE FROM DRAWING. 4. ALL MACHINING FLUIDS MUST BE FULLY SYNTHETIC, FULLY WATER SOLUBLE AND FREE OF SULFUR, SILICONE, AND CHLORINE.				ETM Penultimate Mass (PM) WITH PRISMS AND EARS		E		D0902823		X-002	
DIMENSIONS ARE IN INCHES (MM) TOLERANCES: XX ± XXX ± ANGULAR ± °				MATERIAL N/A FINISH N/A µinch		SYSTEM ADVANCED LIGO SUB-SYSTEM COC		DESIGNER UK/RS/SJS DRAFTER KBUCKLAND (R.JONES) APR10 CHECKER C.LORRE		SCALE: 1:1 PROJECTION:	