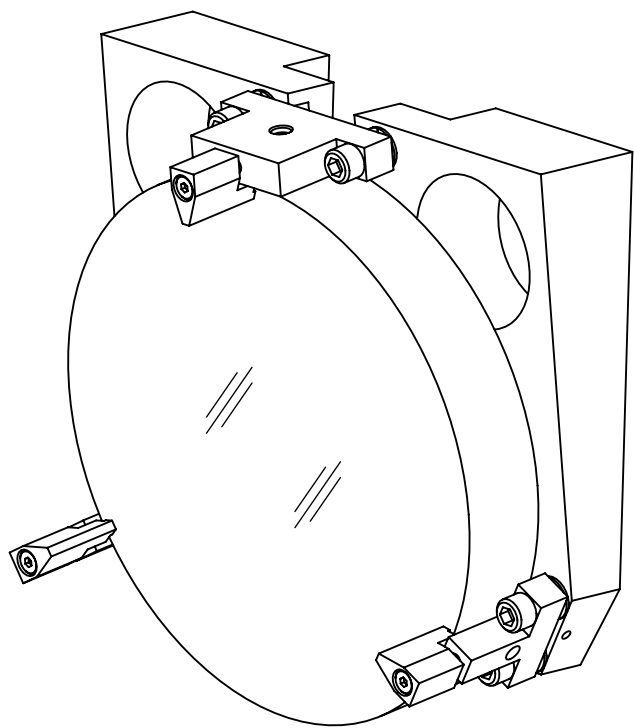


NOTES CONTINUED:
 5. BAG AND TAG ASSEMBLIES INDIVIDUALLY WITH THEIR DRAWING NUMBER, REVISION, VARIANT OR "TYPE" (IF APPLICABLE), AND QUANTITY.
 EXAMPLE (TAG): DXXXXXX-VY, TYPE-XX, QTY: 1
 6. APPROXIMATE WEIGHT = 4.76 LB. [2.16 KG].
 7. ALL PARTS SHALL BE MANUFACTURED IN ACCORDANCE WITH LIGO SPECIFICATION E0900364.
 8. ALL MATERIAL IS TO BE VIRGIN MATERIAL (i.e. NOT WELD REPAIRS OR PLUGS UNLESS APPROVED IN ADVANCE IN WRITING BY LIGO, REFER TO LIGO-E0900364.
 9. NO REPAIRS SHALL BE MADE UNLESS APPROVED IN ADVANCE, AND IN WRITING, BY LIGO LABORATORY. IN GENERAL WELD REPAIRS AND PRESS FIT INSERT REPAIRS ARE NEVER ACCEPTABLE; THE MATERIAL SHOULD BE MADE WITH VIRGIN MATERIAL. SPECIAL CIRCUMSTANCES CAN BE REVIEWED IF / WHEN BROUGHT TO THE ATTENTION OF LIGO CONTRACTING OFFICER'S REPRESENTATIVE (COTR) THROUGH A MATERIAL REVIEW BOARD (MRB) PROCESS, REFER TO LIGO-E0900364.
 10. ELECTRO-POLISH INDICATED HARDWARE PER LIGO SPECIFICATION E0900364, SECTION 5.2.2.

| REV. | DATE | DCN # | DRAWING TREE # |
|------|-------------|-------------|----------------|
| v1 | 24 NOV 2010 | E1000735-v1 | E1000732-v1 |
| - | - | - | - |
| - | - | - | - |



SEE SHEET (2) FOR EXPLODED VIEW WITH ITEM# BALLOONS.

| | | | | | | |
|----------|-------------------------------|--|------------|------|-----------|-----------|
| 12 | 94035A999 (McM-Carr) or equiv | PRECISION SKT SHLDR SCRW 5/32 O.D., 5/8 L, #6-32 X 3/16 THD | 18-8 SSSL | 3 | 1 | 4 |
| 11 | 9435K420 (McM-Carr) or equiv | COMPRESSION SPRING .240 O.D., .032 W.D., .63 L, 23.32#/IN | 302 SSSL | 3 | 1 | 4 |
| 10 | D1001136 | aLIGO ETM F1 MIRROR CLAMP | 6061-T6 Al | 3 | 0 | 3 |
| 9 | NT31-393-577 (Edmond Optics) | SILVER COATED MIRROR 6" DIA, 1.00" THK | Glass | 1 | 0 | 1 |
| 8 | 99934A330 (McM-Carr) or equiv | SKT SET SCRW, 6-32 X 1/8 L, SILVER TIP | 18-8 SSSL | 3 | 1 | 4 |
| 7 | 99553A999 (McM-Carr) or equiv | SKT SET SCRW, OVAL PT, 1/4-28 X 3/8 | 316 SSSL | 3 | 1 | 4 |
| 6 | MS16995-51 | SCREW, SOCKET HEAD CAP, 1/4-20 UNC-2A X 0.875 LONG | 300 SSSL | 6 | 2 | 8 |
| 5 | 9529K44 (McM-Carr) or equiv | 440C SS BALL 7/32" DIAMETER, GRADE 24 | AISI 440C | 3 | 2 | 5 |
| 4 | D1002336 | aLIGO ETM F1 MIRROR SIDE CLAMP LOWER | 6061-T6 Al | 2 | 0 | 2 |
| 3 | D1002337 | aLIGO ETM F1 MIRROR SIDE CLAMP UPPER | 6061-T6 Al | 1 | 0 | 1 |
| 2 | .250 VENT FL WSHR | .255 ID, .468 OD, .032 TH | 18-8 SSSL | 6 | 2 | 8 |
| 1 | D1000164 | aLIGO F1 MIRROR WEDGE ANGULAR PLATE | 6061-T6 Al | 1 | 0 | 1 |
| ITEM NO. | PART NUMBER | DESCRIPTION | MATERIAL | QTY. | SPAREQTY. | TOTALQTY. |

DIMENSIONS ARE IN INCHES
 TOLERANCES:
 .XX ± .01
 .XXX ± .005
 ANGULAR ± 1.0°

NOTES AND TOLERANCES: (UNLESS OTHERWISE SPECIFIED)

1. INTERPRET DRAWING PER ASME Y14.5-1994.
2. REMOVE ALL SHARP EDGES, R.02 MIN.
3. DO NOT SCALE FROM DRAWING.
4. ALL MACHINING FLUIDS MUST BE FULLY SYNTHETIC, FULLY WATER SOLUBLE AND FREE OF SULFUR, SILICONE, AND CHLORINE.

MATERIAL N/A FINISH N/A μinch

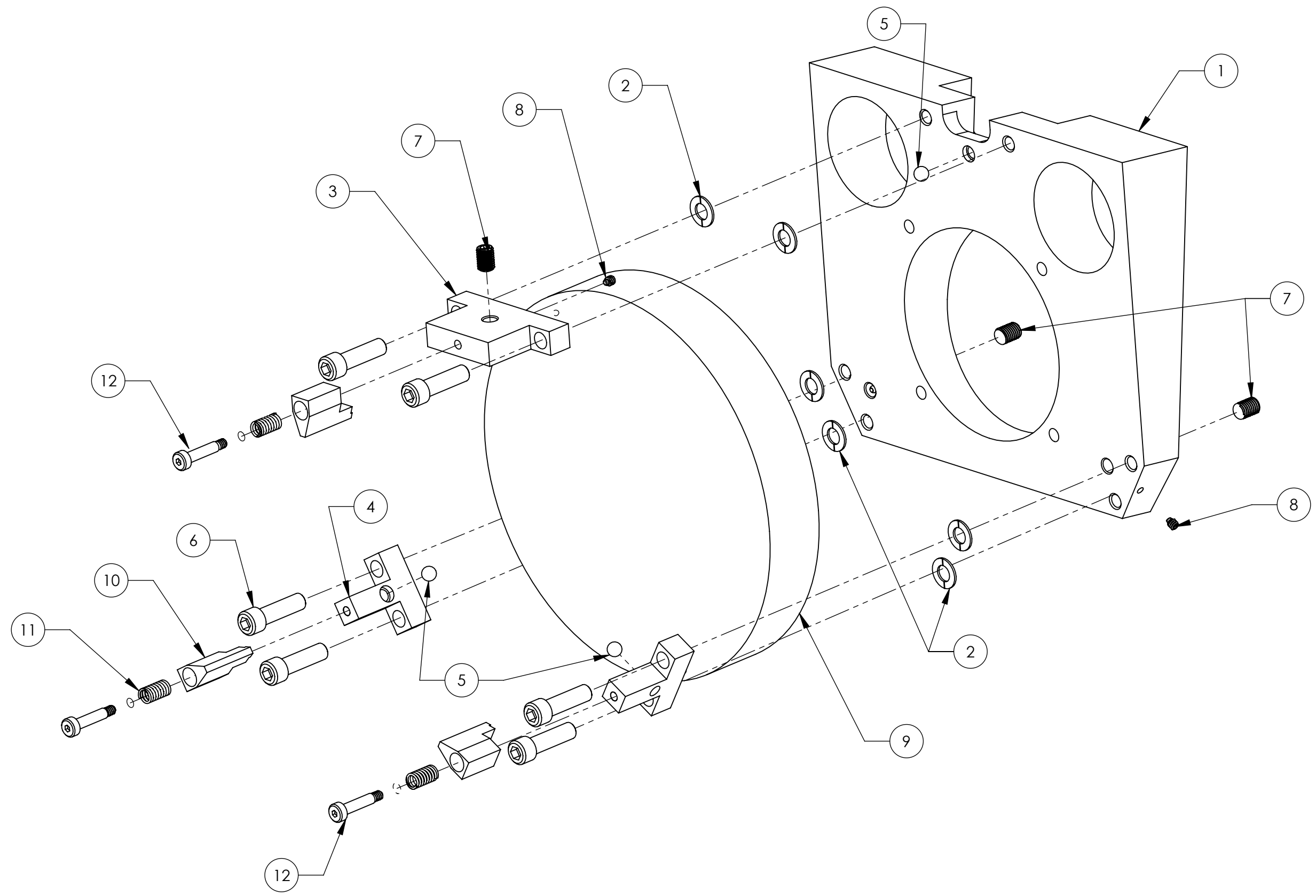
LIGO CALIFORNIA INSTITUTE OF TECHNOLOGY
 MASSACHUSETTS INSTITUTE OF TECHNOLOGY


SYSTEM ADVANCED LIGO SUB-SYSTEM AOS
 NEXT ASSY D1003120

PART NAME aLIGO F1 MIRROR

| | | | | | |
|----------|------------|------------|------------|-------------|--------------|
| DESIGNER | K. MAILAND | 10/01/2010 | SIZE | DWG. NO. | REV. |
| DRAFTER | M. MILLER | 10/05/2010 | B | D1000084 | v1 |
| CHECKER | | | SCALE: 1:2 | PROJECTION: | SHEET 1 OF 2 |
| APPROVAL | | | | | |

D1000084 dLIGO_FI_MIRROR; PART PDM REV: X-184, DRAWING PDM REV: X-049



| | | |
|---|-------------|--------------|
|  CALIFORNIA INSTITUTE OF TECHNOLOGY MASSACHUSETTS INSTITUTE OF TECHNOLOGY | | |
| SIZE | DWG. NO. | REV. |
| B | D1000084 | v1 |
| SCALE: 1:2 | PROJECTION: | SHEET 2 OF 2 |