

5

4

3

2

1

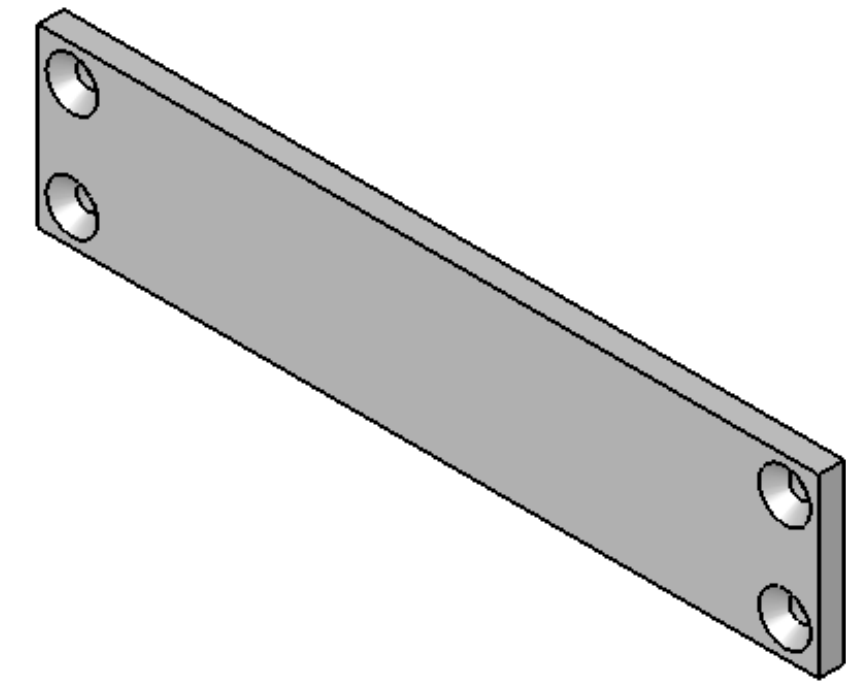
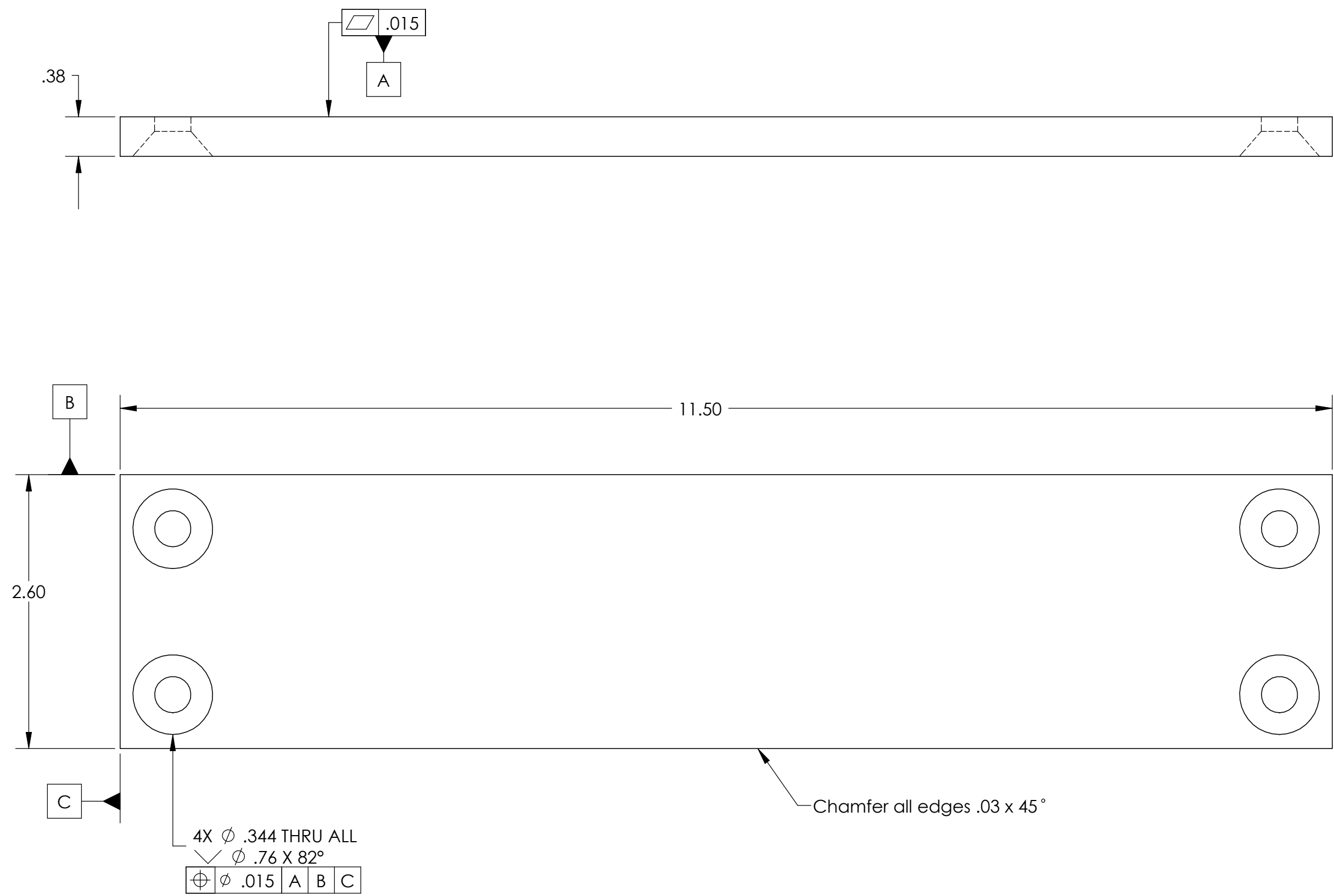
REVISION HISTORY				
REV	DATE	ECO	APPROVAL	DESCRIPTION
A	10/3/2007	1072	D. Senders	Manufacturing Release

D

C

B

A



NOTES:

- 1) MACHINE ALL SURFACES TO REMOVE OXIDES AND MILL FINISH. ABRASIVE REMOVAL TECHNIQUES (OTHER THAN DRESSED BLANCHARD GRINDING) ARE NOT ACCEPTABLE.
- 2) THOROUGHLY CLEAN PART TO REMOVE ALL OIL, GREASE, DIRT, AND CHIPS
- 3) ALL MACHINING FLUIDS MUST BE WATER SOLUBLE AND FREE OF SULFUR, CHLORINE, AND SILICONE. SUCH AS CINCINNATI MILACRON CIMTECH 410
- 4) WHERE INDICATED, MECHANICALLY SCRIBE, STAMP, OR ENGRAVE (VIBRATORY ACCEPTABLE) THE FOLLOWING INFORMATION AS SHOWN BELOW: PART NUMBER-REVISION (AND TYPE IF INDICATED), USE 0.12" TALL CHARACTERS UNLESS PART SIZE DICTATES SMALLER.

D071330-A

DIMENSIONS ARE IN INCHES DECIMAL TOLERANCES: .XX ±.015 .XXX ±.005 ANG TOL: ± 1° SURFACE ROUGHNESS: 32		High Precision Devices 1668 Valtec Lane, Suite C, Boulder, Colorado 80301 Phone: (303) 447-2558 Fax: (303) 447-2548 Web Site: www.hpd-online.com	
PRIOR P/N: APPROVALS: D. Senders MANUFACTURING:	DATE: 10/3/07	DESCRIPTION: Assembly Stand Contact Plate P/N: D071330 FILE NAME: D071330-A Assembly Stand Contact Plate	CONFIG DESC: Default
QUALITY: C. Danaher MATL: PTFE FINISH: None	DATE: 10/3/07	FOLDER: P:\Projects\2006\p06109\p06109 Eng\CAD\Current\ SIZE: C SCALE: 1:1 SHEET 1 OF 1	DRAWN BY: Dave Senders DATE PRINTED: 10/31/2007 REV: A

UNLESS OTHERWISE SPECIFIED:
 INTERNAL AND EXTERNAL INTERSECTIONS SHALL BE UNIFORMLY FINISHED WITH A CHAMFER .005/.010 X 45° OR RADIUS .005/.010.
 CHAMFER ALL THREADED HOLES 110% OF MAJOR DIAMETER X 45°

THIS PRINT & ITS RELATED MODEL ARE THE DOCUMENTATION OF RECORD. UNLESS OTHERWISE SPECIFIED, ALL FEATURES MUST CONFORM TO .010 TOTAL WIDE PROFILE OF A SURFACE. INTERPRET DWG PER ASME Y14.5M 1994