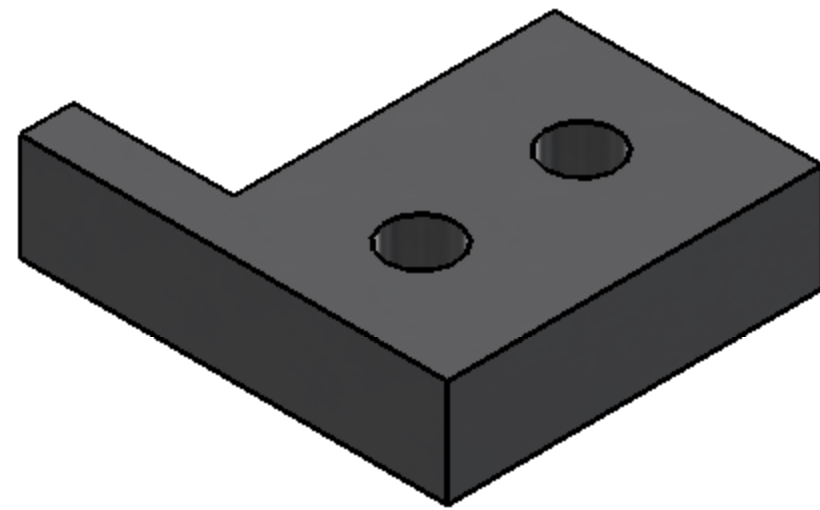


NOTES CONTINUED:

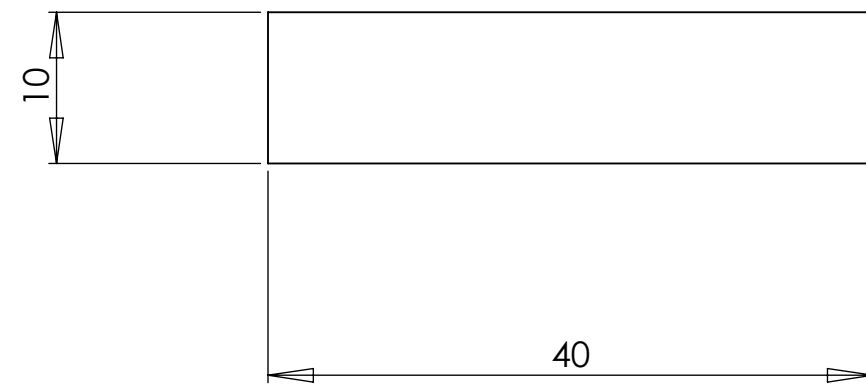
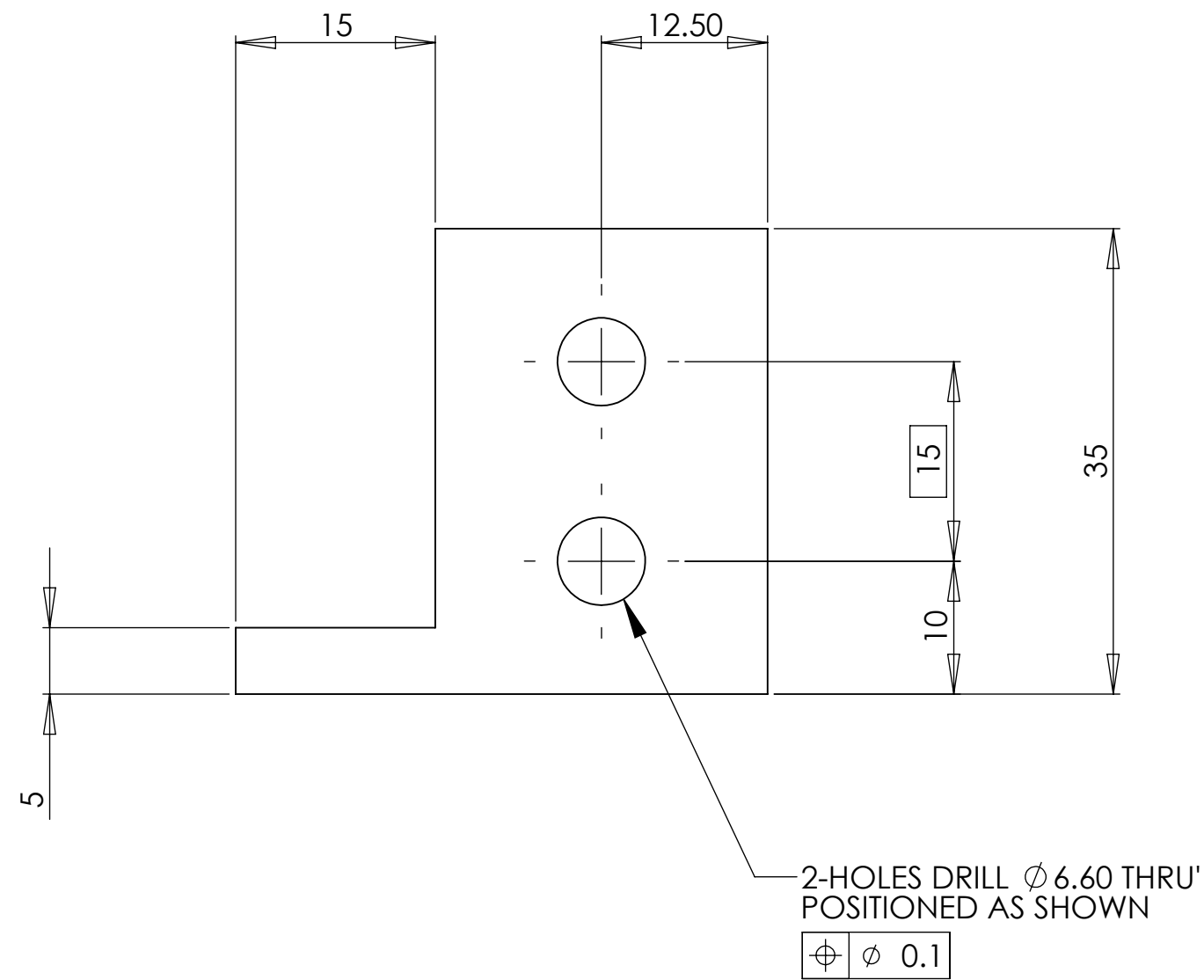
⑤ SCRIBE, ENGRAVE, OR MECHANICALLY STAMP (NO INKS OR DYES) DRAWING PART NUMBER AND REVISION ON NOTED SURFACE FOLLOWED ON THE NEXT LINE BY A THREE DIGIT SERIAL NUMBER. SERIAL NUMBERS START AT 001 FOR THE FIRST ARTICLE AND PROCEED CONSECUTIVELY. USE .07" HIGH CHARACTERS. EXAMPLE: DXXXXXXX-VY, S/N 001. A VIBRATORY TOOL MAY BE USED.

⑥ MACHINE ALL SURFACES.

REV.	DATE	DCN #	DRAWING TREE #



ISOMETRIC VIEW



NOTES AND TOLERANCES: (UNLESS OTHERWISE SPECIFIED)

DIMENSIONS ARE IN MILLIMETERS

TOLERANCES:
 .XX ± .10
 .XXX ± .010

ANGULAR ± 0.2°

1. INTERPRET DRAWING PER ASME Y14.5-1994.
2. REMOVE ALL SHARP EDGES, R.02 MIN.
3. DO NOT SCALE FROM DRAWING.
4. ALL MACHINING FLUIDS MUST BE FULLY SYNTHETIC, FULLY WATER SOLUBLE AND FREE OF SULFUR, SILICONE, AND CHLORINE.

MATERIAL	6061-T6 Al	FINISH	1.6 μm
-----------------	------------	---------------	--------



SYSTEM	ADVANCED LIGO	SUB-SYSTEM	SUS
NEXT ASSY			

PART NAME
 FIBRE CUTTER SLIDER BLOCK UPPER

DESIGNER	K.McINTYRE	12/01/2010	SIZE	c	DWG. NO.	D1000360	REV.	v1
DRAFTER	L.CUNNINGHAM							
CHECKER								
APPROVAL								

SCALE: 2:1 PROJECTION: SHEET 1 OF 1