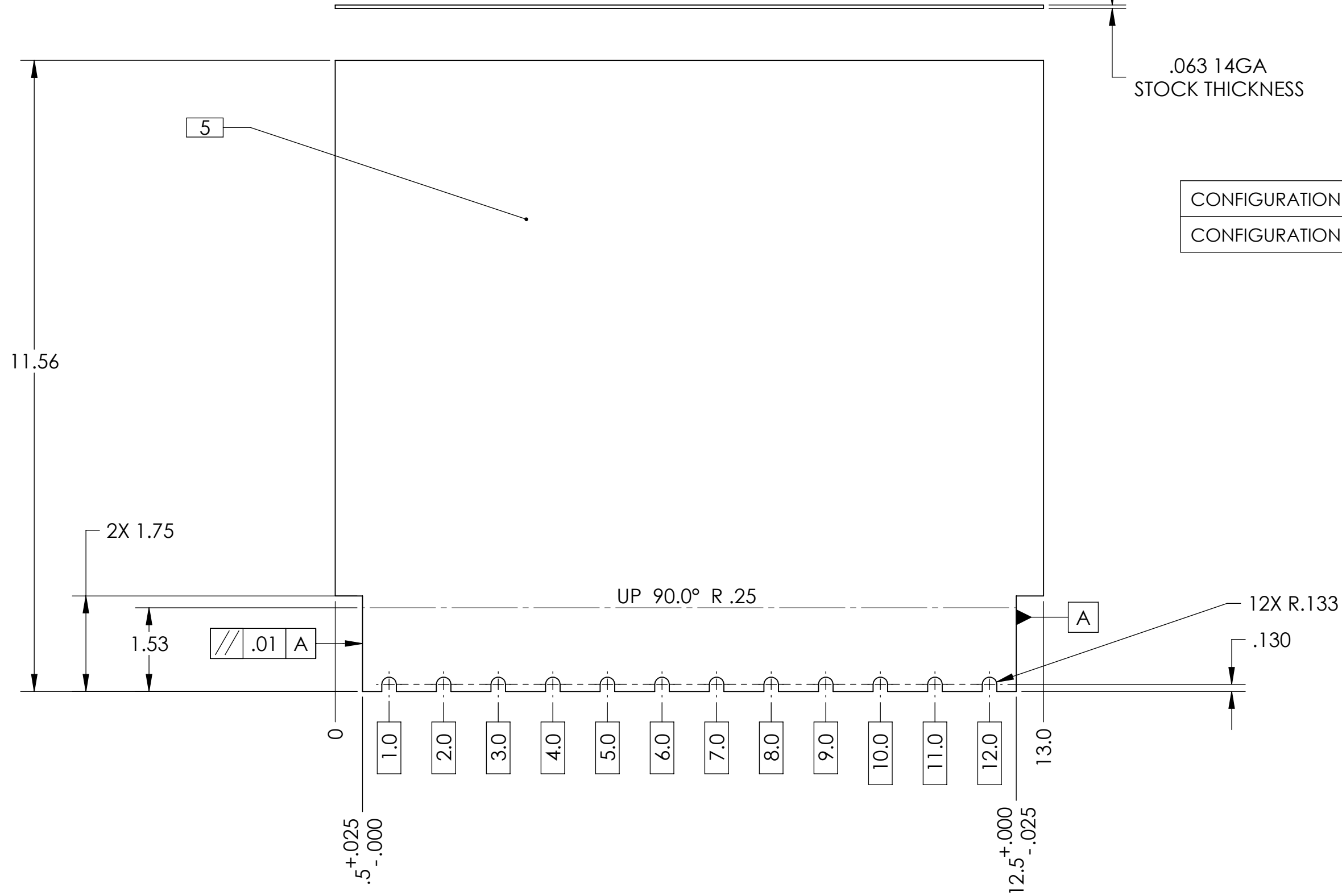


D1000508_TCS LASER ENCLOSURE, BREADBOARD 12 IN PANEL, PART PDM REV: X-011, DRAWING PDM REV: X-005

- NOTES CONTINUED:**
- 5. WITH GLASS BEADS, BLAST NEAR SURFACE, CONTAINING THE FOLD LINES, TO ACHIEVE ABRATED FINISH
 - 6. BLACK ANODIZE ALL SURFACES PER MIL-A-8625, TYPE II OR III, CLASS 2 2 MIL MAXIMUM THICKNESS

| REV. | DATE | DCN # | DRAWING TREE # |
|------|------|-------|----------------|
| - | - | - | - |
| - | - | - | - |
| - | - | - | - |



| | |
|-------------------|------------------------|
| CONFIGURATION -01 | FLAT PATTERN (SHEET 1) |
| CONFIGURATION -02 | USE CASE (SHEET 2) |

NOTES AND TOLERANCES: (UNLESS OTHERWISE SPECIFIED)

DIMENSIONS ARE IN INCHES
 TOLERANCES:
 .XX ± .01
 .XXX ± .005
 ANGULAR ± 0.2°

- 1. INTERPRET DRAWING PER ASME Y14.5-1994.
- 2. REMOVE ALL SHARP EDGES, R.02 MIN.
- 3. DO NOT SCALE FROM DRAWING.
- 4. ALL MACHINING FLUIDS MUST BE FULLY SYNTHETIC, FULLY WATER SOLUBLE AND FREE OF SULFUR, SILICONE, AND CHLORINE.

MATERIAL 5052-O FINISH 125 µinch

LIGO CALIFORNIA INSTITUTE OF TECHNOLOGY
 MASSACHUSETTS INSTITUTE OF TECHNOLOGY
 SYSTEM ADVANCED LIGO SUB-SYSTEM AOS
 NEXT ASSY

| PART NAME | | SIZE | DWG. NO. | REV. |
|---|-------------------------|-------------|----------|--------------|
| BREADBOARD LASER ENCLOSURE, 12 IN PANEL | | B | D1000508 | v1 |
| DESIGNER | M. JACOBSON 08 MAR 2010 | | | |
| DRAFTER | M. JACOBSON 08 MAR 2010 | | | |
| CHECKER | K. MAILAND 09 MAR 2010 | | | |
| APPROVAL | | | | |
| SCALE: 1:4 | | PROJECTION: | | SHEET 1 OF 2 |

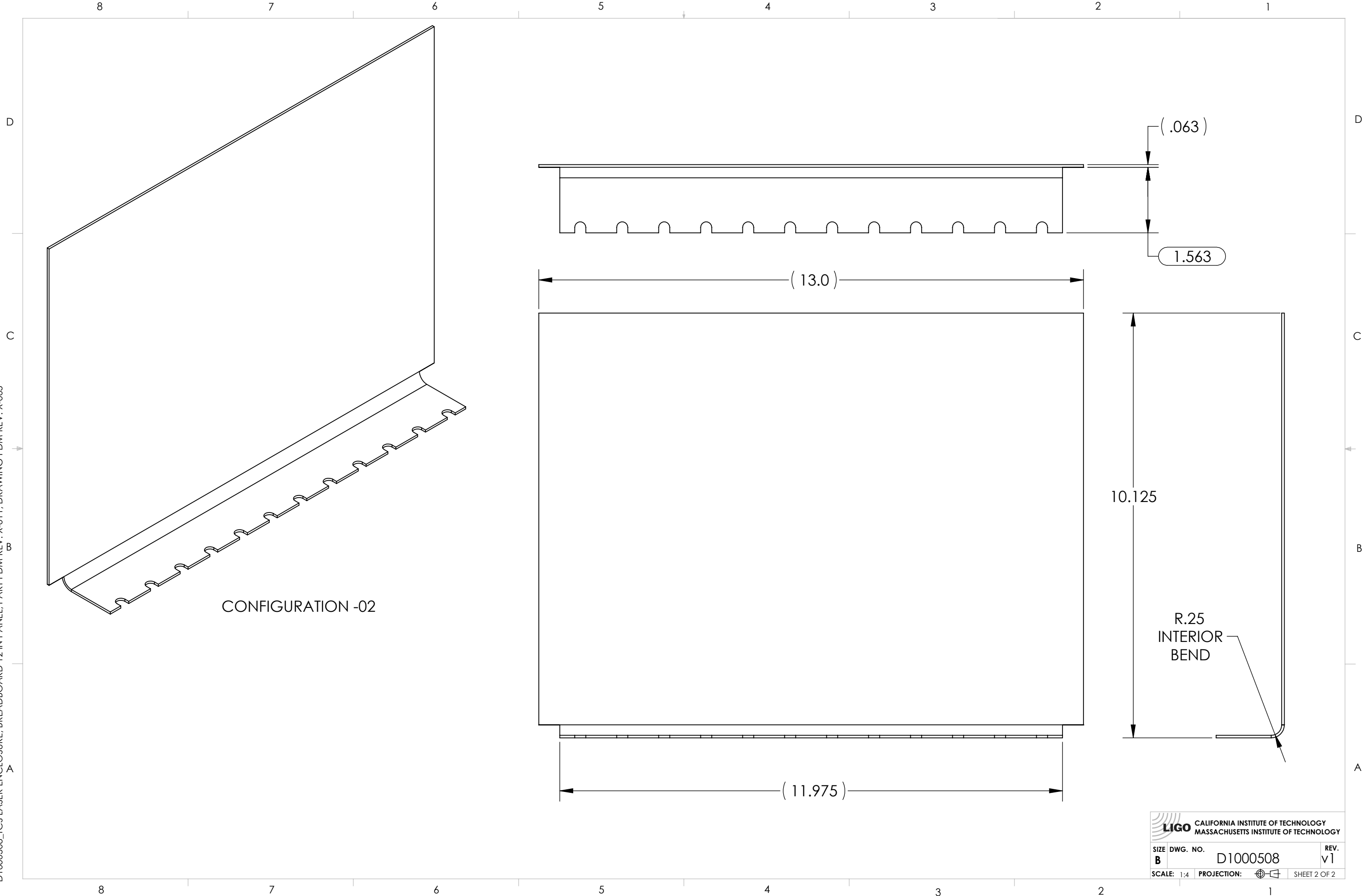
8 7 6 5 4 3 2 1

8 7 6 5 4 3 2 1

D C B A

D C B A

D1000508_TCS LASER ENCLOSURE, BREADBOARD 12 IN PANEL, PART PDM REV: X-011, DRAWING PDM REV: X-005



CONFIGURATION -02

(13.0)

1.563

(.063)

10.125

R.25
INTERIOR
BEND

(11.975)

LIGO CALIFORNIA INSTITUTE OF TECHNOLOGY
MASSACHUSETTS INSTITUTE OF TECHNOLOGY

| | | |
|------------|----------|--------------|
| SIZE | DWG. NO. | REV. |
| B | D1000508 | v1 |
| SCALE: 1:4 | | PROJECTION: |
| | | SHEET 2 OF 2 |