

D1000540\_ALIGO\_IO\_HAM\_AUX\_SUS\_EARTHQUAKE\_STOP\_LOWER\_RIGHT, PART PDM REV: X-009, DRAWING PDM REV: X-009

**NOTES CONTINUED:**

5. SCRIBE, ENGRAVE, OR MECHANICALLY STAMP (NO DYES OR INKS) A UNIQUE THREE DIGIT SERIAL NUMBER & REVISION NUMBER ON EACH PART. SERIAL NUMBERS START AT 001 FOR THE FIRST ARTICLE AND PROCEED CONSECUTIVELY. BAG AND TAG PARTS WITH THEIR DRAWING PART NUMBER, REVISION, VARIANT OR "TYPE" (IF APPLICABLE), AND QUANTITY. IF PARTS ARE TOO SMALL TO SCRIBE, BAGGING AND TAGGING ALONE IS SUFFICIENT.  
 EXAMPLE (PART): 001-v1  
 EXAMPLE (TAG): DXXXXXX-VY, TYPE-XX, QTY: TBD

6. APPROXIMATE WEIGHT = 0.108 LB.

7. MACHINE ALL SURFACES TO REMOVE OXIDES AND MILL FINISH. USE OF ABRASIVE REMOVAL TECHNIQUES IS NOT ALLOWED. REFER TO LIGO-E0900364

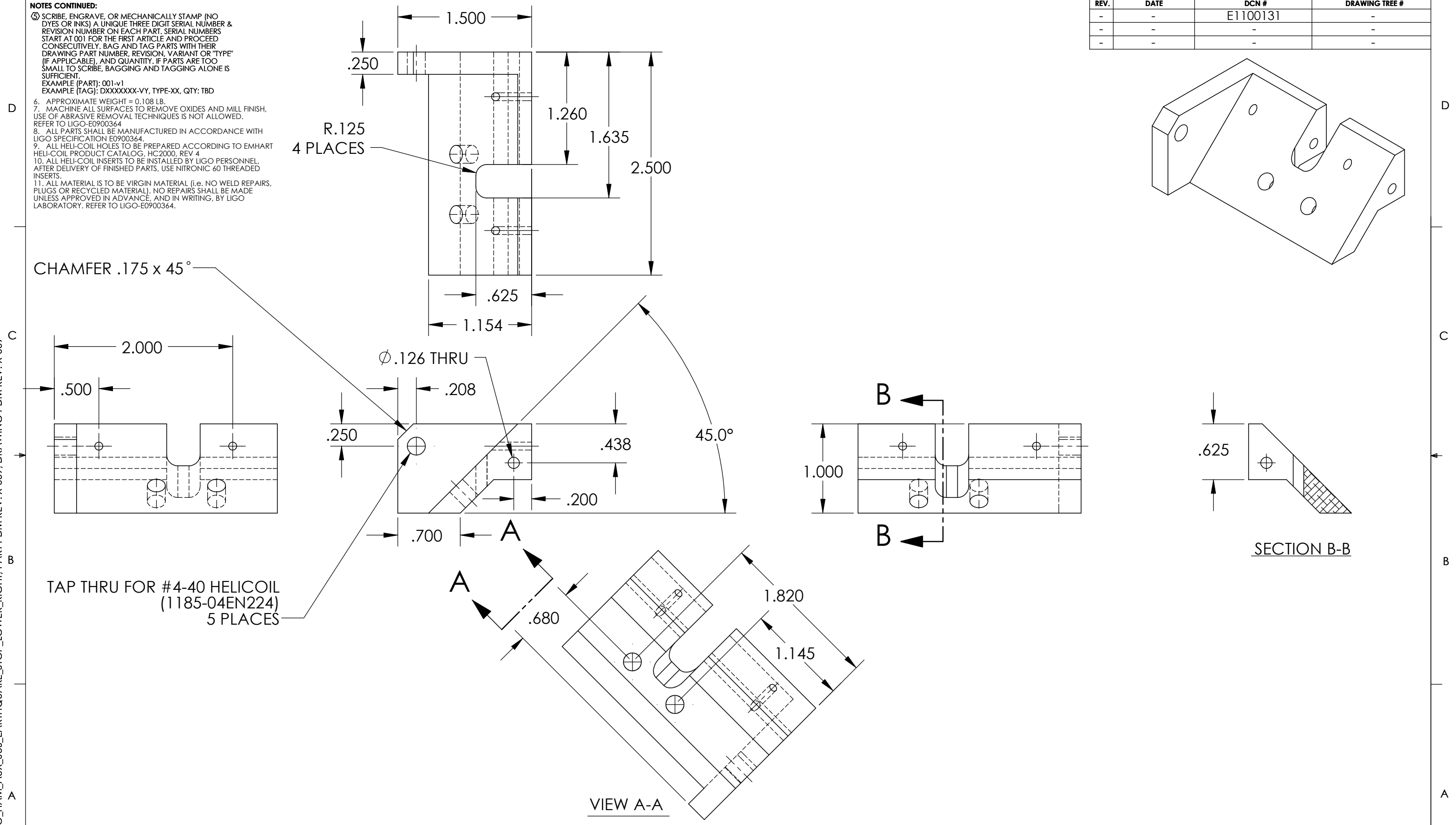
8. ALL PARTS SHALL BE MANUFACTURED IN ACCORDANCE WITH LIGO SPECIFICATION E0900364.

9. ALL HELICOIL HOLES TO BE PREPARED ACCORDING TO EMHART HELICOIL PRODUCT CATALOG, HC2000, REV 4

10. ALL HELICOIL INSERTS TO BE INSTALLED BY LIGO PERSONNEL. AFTER DELIVERY OF FINISHED PARTS, USE NITRONIC 60 THREADED INSERTS.

11. ALL MATERIAL IS TO BE VIRGIN MATERIAL (i.e. NO WELD REPAIRS, PLUGS OR RECYCLED MATERIAL). NO REPAIRS SHALL BE MADE UNLESS APPROVED IN ADVANCE, AND IN WRITING, BY LIGO LABORATORY. REFER TO LIGO-E0900364.

REV.	DATE	DCN #	DRAWING TREE #
-	-	E1100131	-
-	-	-	-
-	-	-	-



NOTES AND TOLERANCES: (UNLESS OTHERWISE SPECIFIED)				UNIVERSITY OF FLORIDA CALIFORNIA INSTITUTE OF TECHNOLOGY MASSACHUSETTS INSTITUTE OF TECHNOLOGY		PART NAME	
DIMENSIONS ARE IN INCHES				LIGO		EARTHQUAKE STOP LOWER RIGHT	
TOLERANCES: .XX ± .01 .XXX ± .003				ADVANCED LIGO		DESIGNER L.WILLIAMS 11 MAR 2010	
ANGULAR ± 0.1°				SUB-SYSTEM 100		DRAFTER L.WILLIAMS 25 MAR 2010	
MATERIAL 6061 Alloy				NEXT ASSY D1000120		SIZE DWG. NO. B D1000540	
FINISH 63 micinch						REV. v7	
						SCALE: 1:1 PROJECTION: SHEET 1 OF 1	