

8

7

6

5

4

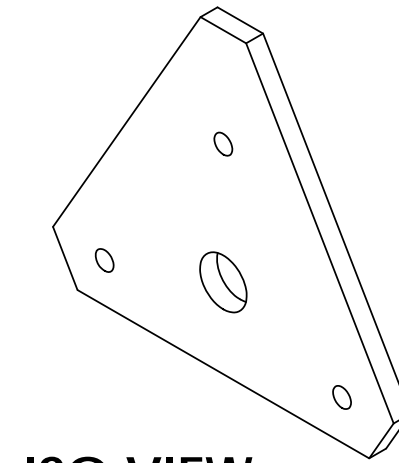
3

2

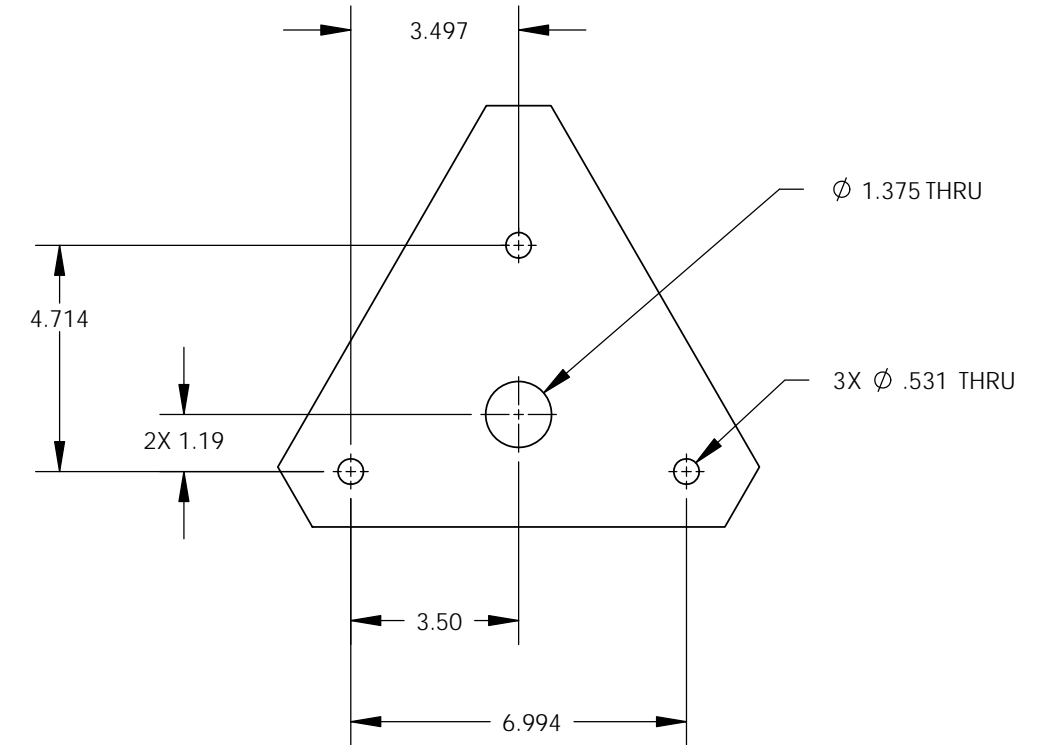
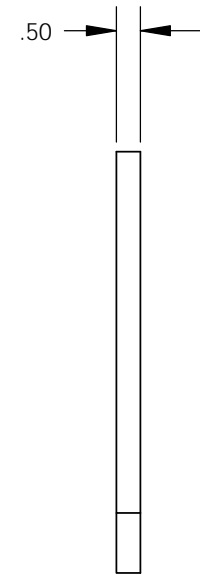
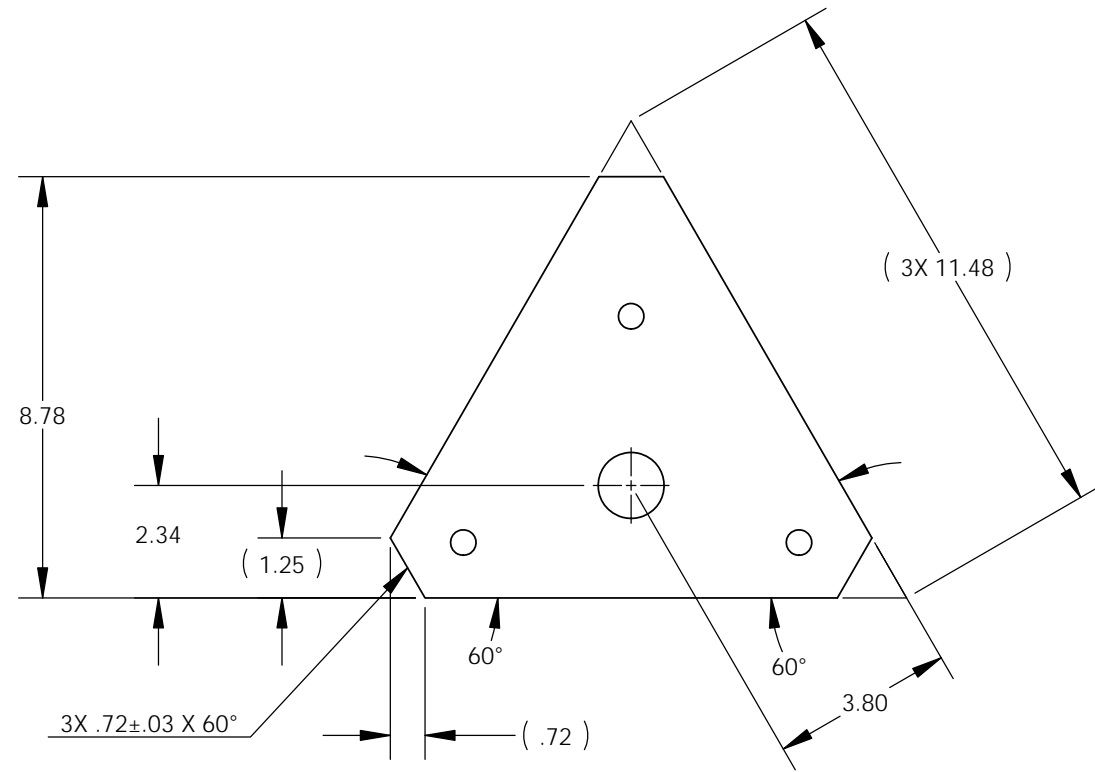
1

NOTES CONTINUED:
 5. RAPID CUTTING METHOD ACCEPTABLE FOR OUTER PROFILE AND Ø.891 HOLE.

REV.	DATE	DCN #	DRAWING TREE #
v1	11 JUL 2011		
v2	05 MAR 2012	E1200249-x0	



ISO VIEW



D1000677 aLIGO AOS Pier Base 3 (LHO), PART PDM REV: X-010, DRAWING PDM REV: X-003

NOTES AND TOLERANCES: (UNLESS OTHERWISE SPECIFIED)				LIGO CALIFORNIA INSTITUTE OF TECHNOLOGY MASSACHUSETTS INSTITUTE OF TECHNOLOGY		PART NAME	
DIMENSIONS ARE IN INCHES TOLERANCES: .XX ± .01 .XXX ± .005 ANGULAR ± 1.0°				1. INTERPRET DRAWING PER ASME Y14.5-1994. 2. REMOVE ALL SHARP EDGES, R.02 3. DO NOT SCALE FROM DRAWING. 4. ALL MACHINING FLUIDS MUST BE FULLY SYNTHETIC, FULLY WATER SOLUBLE AND FREE OF SULFUR, SILICONE, AND CHLORINE.		ALIGO AOS PIER BASE 3 (LHO)	
MATERIAL		FINISH		SYSTEM		SUB-SYSTEM	
304 SSTL		N/A µinch		ADVANCED LIGO		AOS	
NEXT ASSY				DESIGNER		DRAFTER	
D1000675				C. CONLEY		N. KILPATRICK	
				CHECKER		APPROVAL	
				SCALE: 1:4		PROJECTION:	
						SHEET 1 OF 1	
				SIZE		DWG. NO.	
				B		D1000677	
				REV.		v2	

8

7

6

5

4

3

2

1