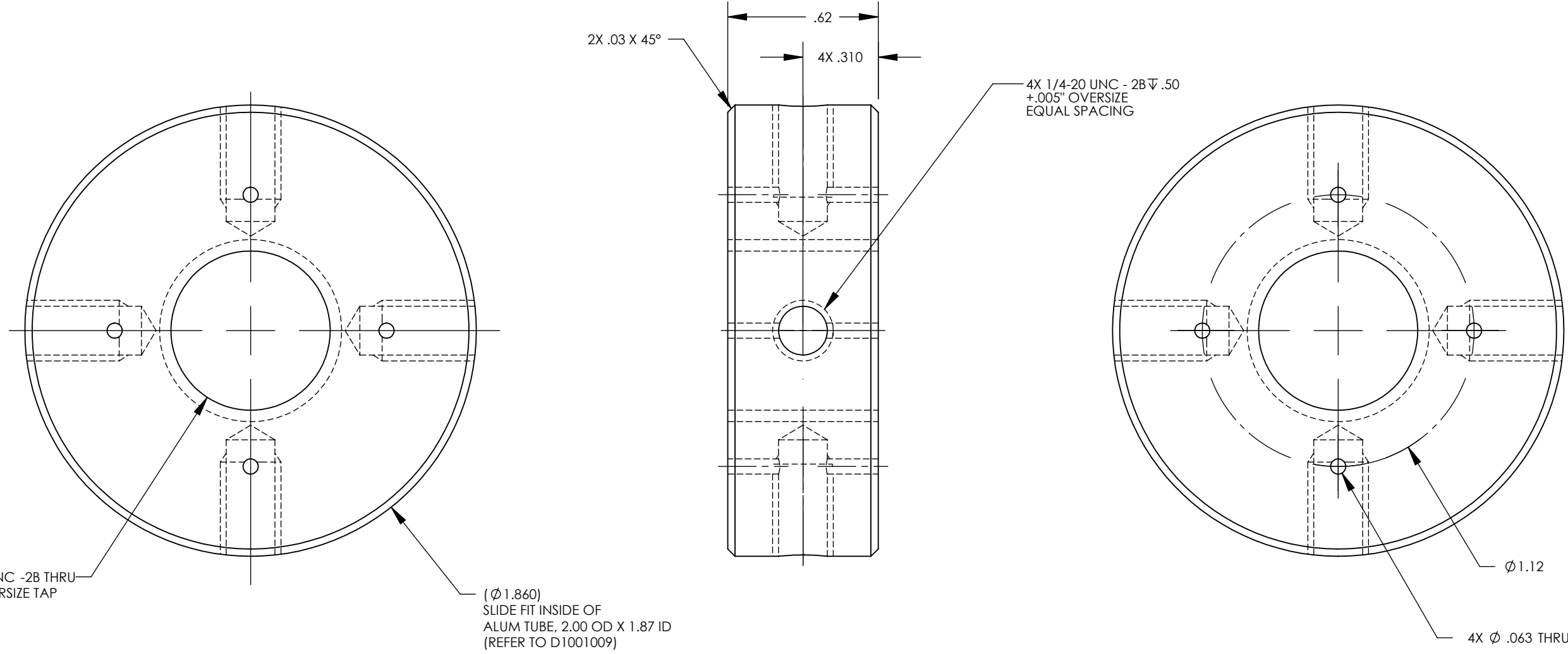


NOTES CONTINUED:

- ⑤ SCRIBE, ENGRAVE (A VIBRATORY TOOL MAY BE USED), LASER MARK OR MECHANICALLY STAMP (NO INKS OR DYES) DRAWING PART NUMBER, REVISION (AND VARIANT OR 'TYPE' IF APPLICABLE) ON NOTED SURFACE OF PART FOLLOWED ON THE NEXT LINE WITH A THREE DIGIT SERIAL NUMBER. SERIAL NUMBERS START AT 001 FOR THE FIRST ARTICLE AND PROCEED CONSECUTIVELY. USE MINIMUM 0.12" HIGH CHARACTERS, UNLESS THE SIZE OF THE PART DICTATES SMALLER CHARACTERS.
- D FOR SMALL PARTS BAG AND TAG PARTS WITH THEIR DRAWING PART NUMBER, REVISION (AND VARIANT OR 'TYPE' IF APPLICABLE) AND QUANTITY.
EXAMPLE: DXXXXXX-VY, TYPE-XX, S/N XXX
- 6. APPROXIMATE WEIGHT = 0.136 LB.
- 7. MACHINE ALL SURFACES TO REMOVE OXIDES AND MILL FINISH, USE OF ABRASIVE REMOVAL TECHNIQUES IS NOT ALLOWED. REFER TO LIGO-E0900364.
- 8. ALL PARTS SHALL BE MANUFACTURED IN ACCORDANCE WITH LIGO SPECIFICATION E0900364.
- 9. ALL MATERIAL IS TO BE VIRGIN MATERIAL (i.e. NO WELD REPAIRS, PLUGS OR RECYCLED MATERIAL). NO REPAIRS SHALL BE MADE UNLESS APPROVED IN ADVANCE, AND IN WRITING, BY LIGO LABORATORY. REFER TO LIGO-E0900364.

| REV. | DATE | DCN # | DRAWING TREE # |
|------|-------------|----------|----------------|
| v1 | 20 JUL 2010 | E1000285 | |
| v2 | 11MAR 2011 | E1100216 | |

D1000684_AdlIGO_AOS_SLC Tube Lower Mounting Plate, PART PDM REV: X-008, DRAWING PDM REV: X-015



| NOTES AND TOLERANCES: (UNLESS OTHERWISE SPECIFIED) | | | | LIGO CALIFORNIA INSTITUTE OF TECHNOLOGY MASSACHUSETTS INSTITUTE OF TECHNOLOGY | | PART NAME | |
|---|--|----------|--|--|--|---------------------------|--|
| DIMENSIONS ARE IN INCHES TOLERANCES: .XX ± .01 .XXX ± .005 ANGULAR ± 1.0° | | | | 1. INTERPRET DRAWING PER ASME Y14.5-1994. 2. REMOVE ALL SHARP EDGES 0.005" TO 0.015". 3. DO NOT SCALE FROM DRAWING. 4. ALL MACHINING FLUIDS MUST BE FULLY SYNTHETIC, FULLY WATER SOLUBLE AND FREE OF SULFUR, SILICONE, AND CHLORINE REFER TO LIGO E0900237 FOR LIST OF APPROVED COOLANTS. | | SLIC TUBE LOWER MTG PLATE | |
| MATERIAL | | FINISH | | SYSTEM | | SUB-SYSTEM | |
| 6061-T6 Al | | 63 µinch | | ADVANCED LIGO | | AOS | |
| NEXT ASSY | | | | DESIGNER | | DATE | |
| D1001007, D1001095 | | | | N. NGUYEN | | 01 JUN 2010 | |
| SCALE: 2:1 | | | | DRAFTER | | DATE | |
| PROJECTION: | | | | TQ. NGUYEN | | 20 JUL 2010 | |
| SHEET 1 OF 1 | | | | CHECKER | | DATE | |
| APPROVAL | | | | M. SMITH | | 01 NOV 2010 | |
| D1000684 | | | | D. COYNE | | 10 NOV 2010 | |
| REV. v2 | | | | SIZE | | DWG. NO. | |
| B | | | | 2 | | D1000684 | |