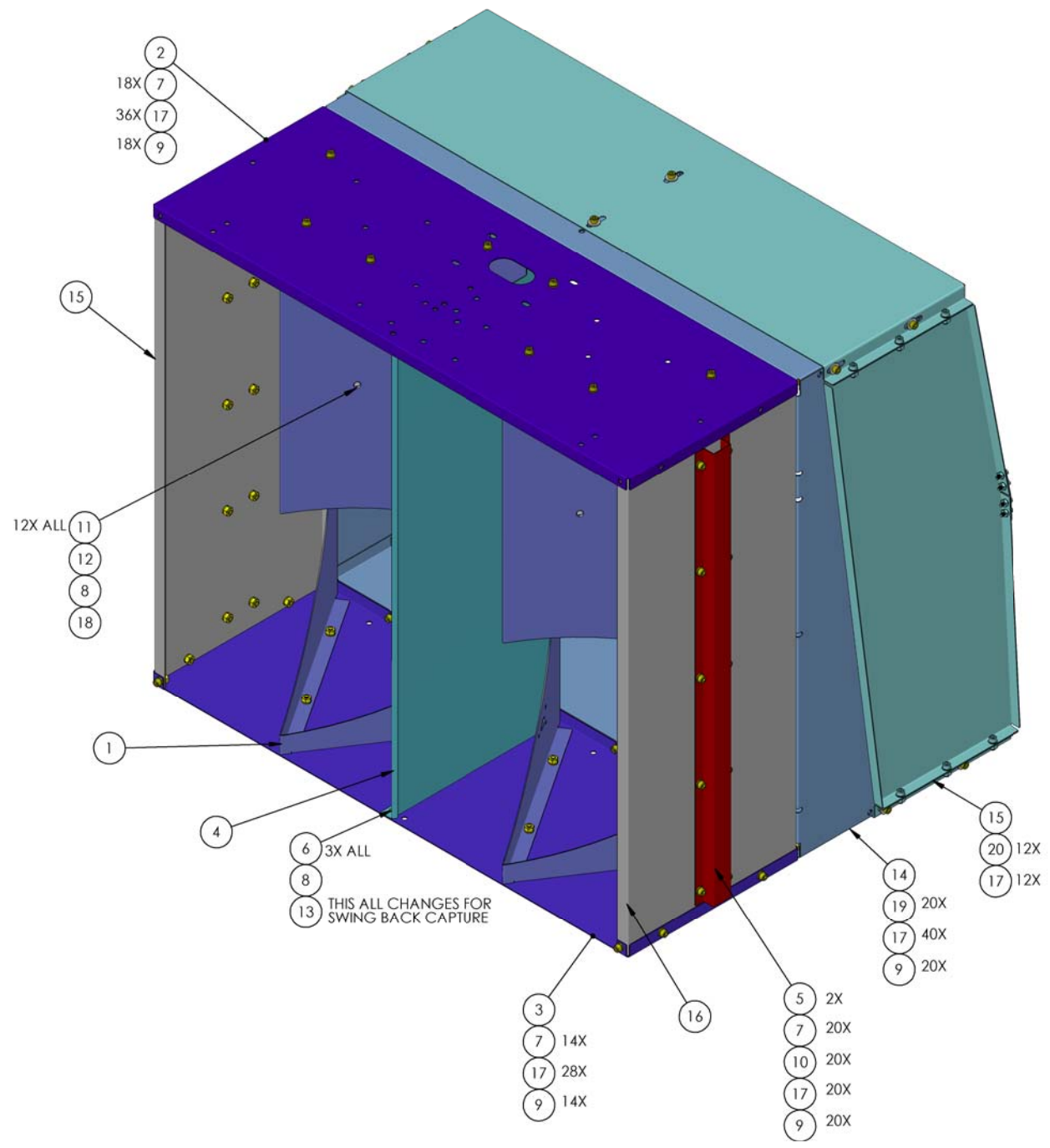


NOTES CONTINUED:

REV.	DATE	DCN #	DRAWING TREE #
v1	07 APR 2011	E1100216	E1000668
v2	18 Aug. 2011	PRELIMINARY	-
-	-	-	-

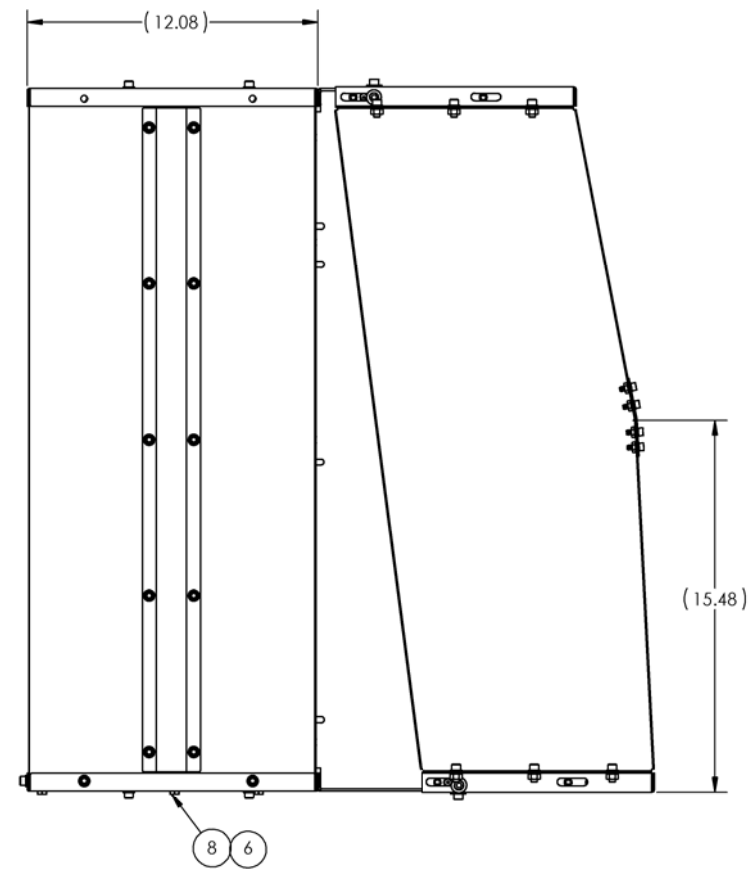
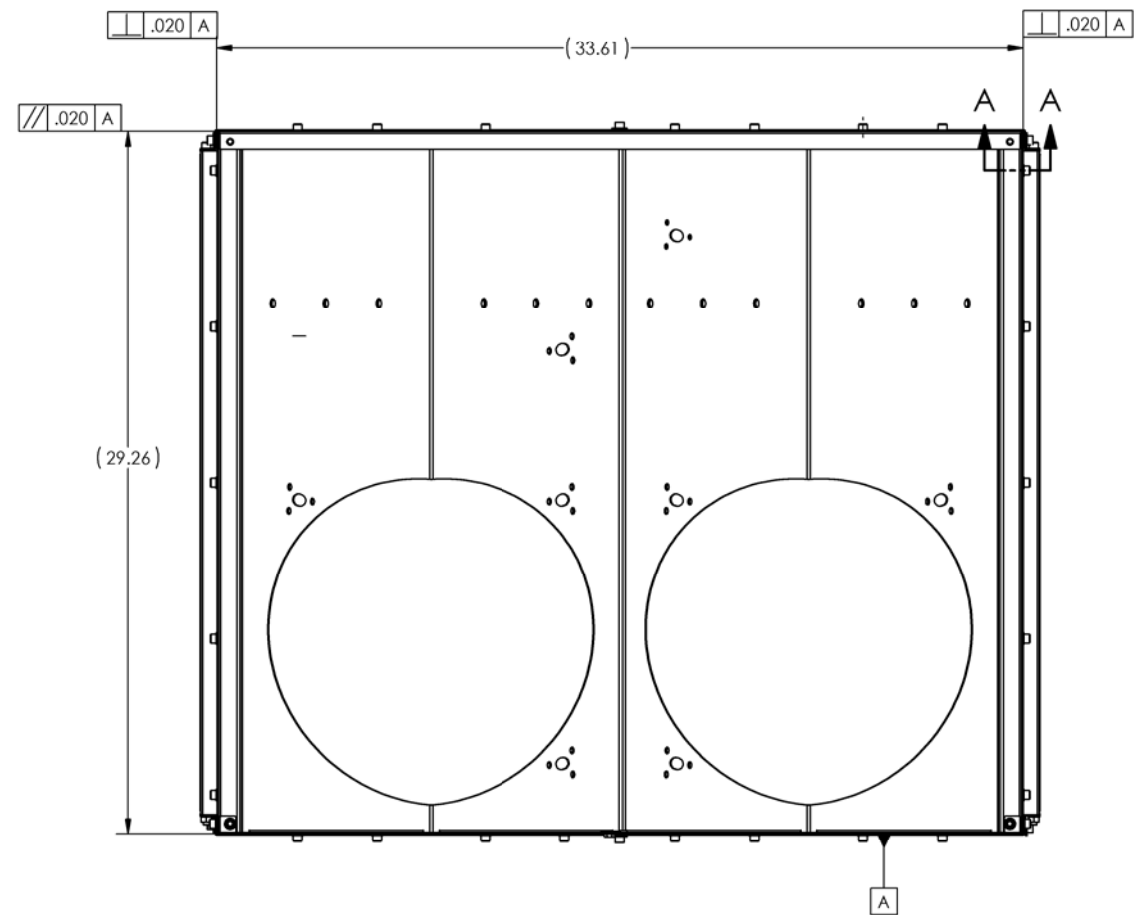
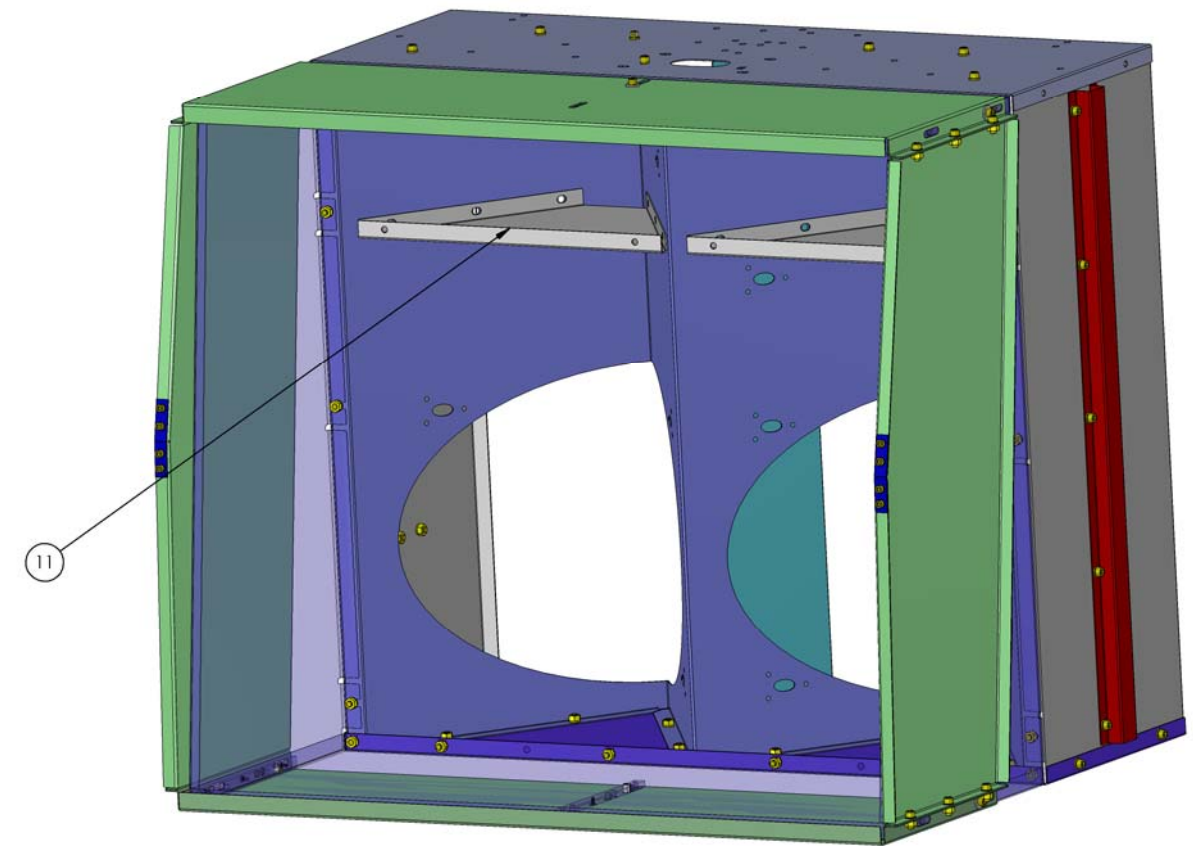
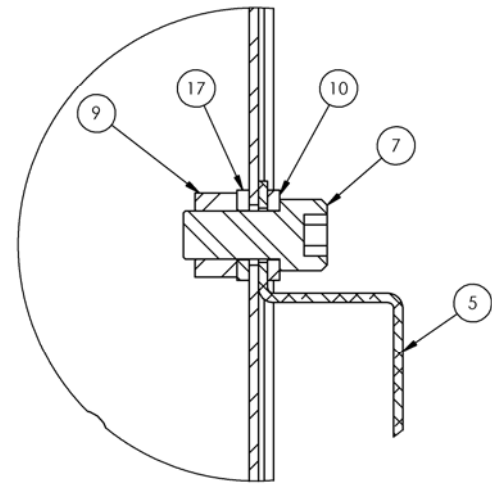
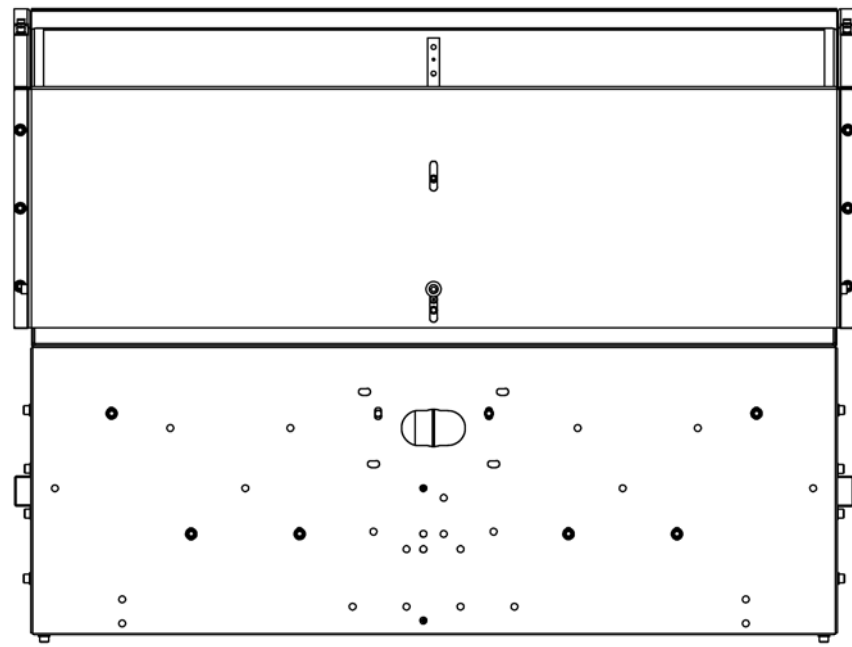


20	UCC_C-2008-NA	SHCS, 1/4-20 x .50 AG PLATED	18-8 S.ST AG-PLATED	12	4	16
19	92200A539	SCREW, SHCS 1/4-20 X 5/8 LG, MS 16995-51	300 S.ST	20	4	24
18	-	WASHER, FLAT, #10	PEEK	15	3	18
17	-	WASHER, FLAT, 1/4 ID	PEEK	136	29	165
16	D1100953	ARM CAVITY BAFFLE SKIN-RIGHT	18 GA Enamel Steel A424 Type I	1		0
15	D1100952	ARM CAVITY BAFFLE SKIN-LEFT	18 GA Enamel Steel A424 Type I	1		0
14	D1100359	ACB ADJUSTABLE EXTENDER SHELF ASSY	Assy	1		1
13	D1100391	ACB SHELF ASSY	Assy	1		1
12	90313A200	WASHER, FLAT, #10 (NAS 620-C10 McMASTER)	18-8 SSTL	30	15	45
11	D1001365	ARM BAFFLE MIDDLE REINFORCING PLATE	Enamel A424 Type I	2		2
10	98019A355	WASHER, FLAT, 1/4, MIL 15795-810	18-8 SSTL	20	4	24
9	N-2520-A	HEX NUT, 1/4-20, SILVER PLATE, UC COMP.	18-8 S.ST AG-PLATED	72	14	86
8	N-1024-A	HEX NUT, #10-24, SILVER PLATE, UC COMP.	18-8 S.ST AG-PLAYED	15	3	18
7	92200A537	SCREW, SOCKET HEAD CAP, 1/4-20 UNC-2A X 0.5L, MS 16995-48	300 SSTL	52	10	62
6	92210A236	FLAT HD SHCS #10-24 X.25, UNDERCUT, McMASTER	18-8 SSTL	15	8	23
5	D1001363	ACB SIDE REINFORCING HATSECTION	Enamel Steel A424 Type I	2		2
4	D1000976	ARM CAVITY BAFFLE CTR SKIN	Enamel Steel A424 Type I	1		1
3	D1000975	ARM CAVITY BAFFLE BTM SKIN	Enamel Steel A424 Type I	1		1
17	D1000974	ARM CAVITY BAFFLE TOP SKIN	Enamel Steel A424 Type I	1		1
1	D1000973	ARM CAVITY BAFFLE SKIN	Enamel Steel A424 Type I	1		1
ITEM NO.	PART NUMBER	DESCRIPTION	MATERIAL	QTY.	SPARE	TOTAL

PARTS LIST

DIMENSIONS ARE IN INCHES TOLERANCES: .XX ± .XXX ± ANGULAR ± °		NOTES AND TOLERANCES: (UNLESS OTHERWISE SPECIFIED) 1. INTERPRET DRAWING PER ASME Y14.5-1994. 2. REMOVE ALL SHARP EDGES, R.02 MIN. 3. DO NOT SCALE FROM DRAWING. 4. ALL MACHINING FLUIDS MUST BE FULLY SYNTHETIC, FULLY WATER SOLUBLE AND FREE OF SULFUR, SILICONE, AND CHLORINE.		CALIFORNIA INSTITUTE OF TECHNOLOGY MASSACHUSETTS INSTITUTE OF TECHNOLOGY		PART NAME ARM CAVITY BAFFLE BOX ASSY			
MATERIAL		FINISH		NEXT ASSY		DESIGNER: N.Nguyen 01 Jun 2010 DRAFTER: N.Nguyen 01 Jul 2010 CHECKER: M. Smith 10 NOV 2010 APPROVAL: E. Coyne 20 NOV 2010		SIZE: D DWG. NO.: D1000977 REV.: v2	
BOM		N/A		D0901376		SCALE: 1:1		PROJECTION: SHEET 1 OF 2	

D:\000977_Ind\ISO_LACS_31C_ARM_Cavity_Baffle_Box Assy_PART PDM REV: X-144 DRAWING PDM REV: A02



LIGO CALIFORNIA INSTITUTE OF TECHNOLOGY MASSACHUSETTS INSTITUTE OF TECHNOLOGY		
SIZE	DWG. NO.	REV.
D	D1000977	v2
SCALE: 1:1	PROJECTION:	SHEET 2 OF 2

D1000977_IndIGO_LACS_ELC_ARM_Coily_Baffle_Box_Arty_PART_PDM_REV_X-144_DBAWING_PDM_REV_X-032