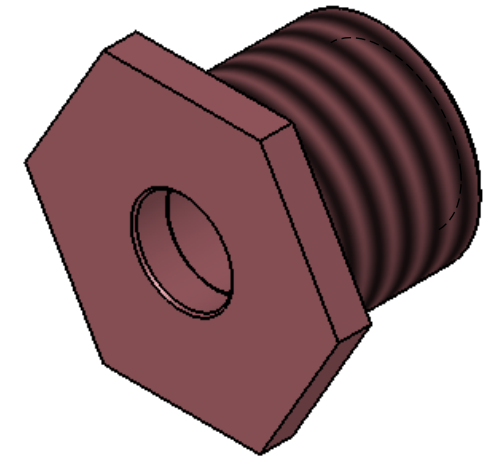
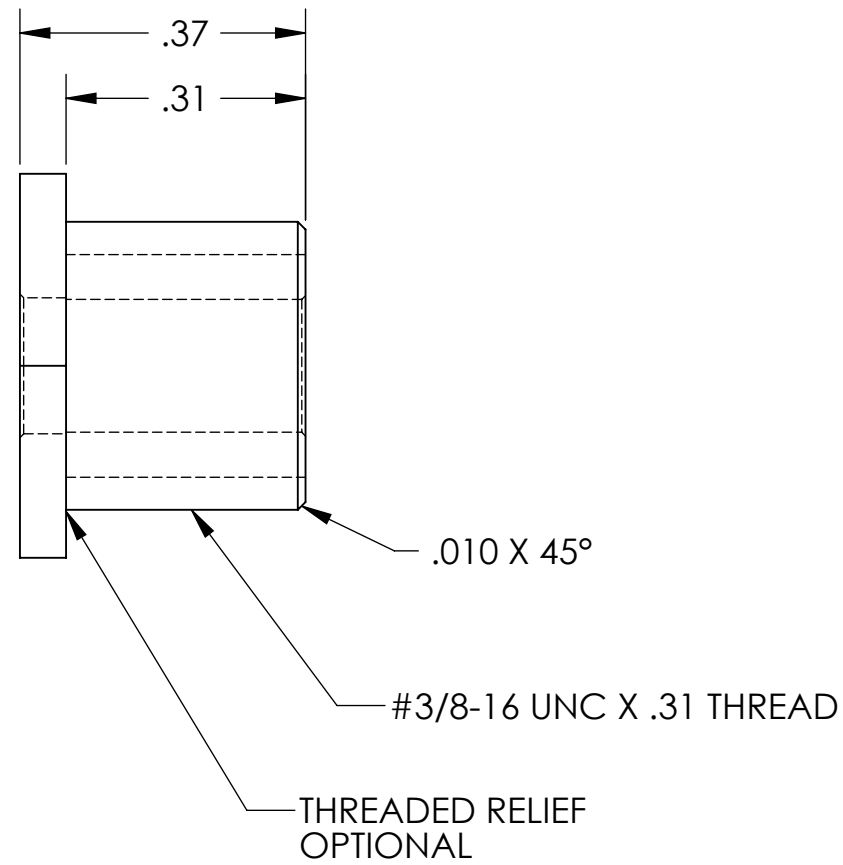
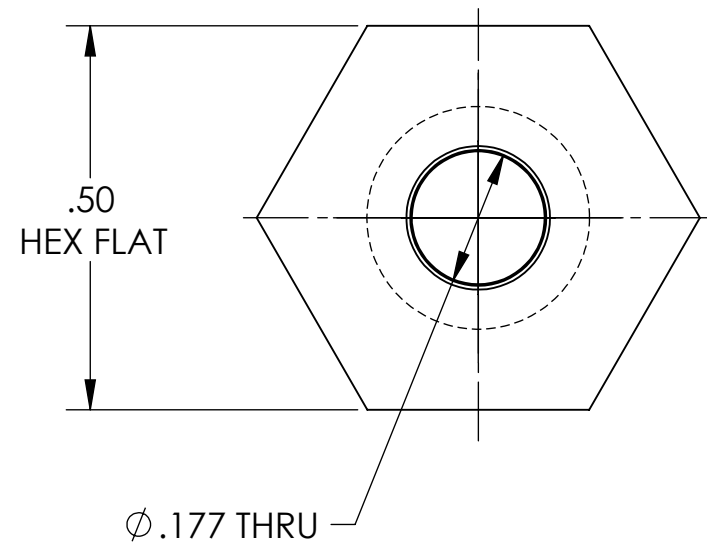


D1001061_AdlIGO_AOS_SLC_FM Elliptical Baffle Spacer, PART PDM REV: X-004, DRAWING PDM REV: X-010

NOTES CONTINUED:
5. SCRIBE, ENGRAVE, LASER MARK OR MECHANICALLY STAMP (NO DYES OR INKS) A UNIQUE THREE DIGIT SERIAL NUMBER & REVISION NUMBER ON EACH PART. SERIAL NUMBERS START AT 001 FOR THE FIRST ARTICLE AND PROCEED CONSECUTIVELY. BAG AND TAG PARTS WITH THEIR DRAWING PART NUMBER, REVISION, VARIANT OR "TYPE" (IF APPLICABLE), AND QUANTITY. IF PARTS ARE TOO SMALL TO SCRIBE, BAGGING AND TAGGING ALONE IS SUFFICIENT.
EXAMPLE (PART): 001-v1
EXAMPLE (TAG): DXXXXXX-VY, TYPE-XX, QTY: TBD

- 6. APPROXIMATE WEIGHT = .011 LB.
- 7. MACHINE ALL SURFACES TO REMOVE OXIDES AND MILL FINISH. USE OF ABRASIVE REMOVAL TECHNIQUES IS NOT ALLOWED.
- 8. ALL PARTS SHALL BE MANUFACTURED IN ACCORDANCE WITH LIGO SPECIFICATION E0900364.

REV.	DATE	DCN #	DRAWING TREE #
v1	15 SEP 2010	E1000406	-
-	-	-	-
-	-	-	-



GENERAL VIEW
FOR REFERENCE ONLY
NO SCALE

NOTES AND TOLERANCES: (UNLESS OTHERWISE SPECIFIED)				LIGO CALIFORNIA INSTITUTE OF TECHNOLOGY MASSACHUSETTS INSTITUTE OF TECHNOLOGY		PART NAME			
DIMENSIONS ARE IN INCHES		1. INTERPRET DRAWING PER ASME Y14.5-1994. 2. REMOVE ALL SHARP EDGES, R.02 MIN. 3. DO NOT SCALE FROM DRAWING. 4. ALL MACHINING FLUIDS MUST BE FULLY SYNTHETIC, FULLY WATER SOLUBLE AND FREE OF SULFUR, SILICONE, AND CHLORINE.		SYSTEM ADVANCED LIGO		SUB-SYSTEM AOS		SLC FM ELLIPTICAL BAFFLE SPACER	
TOLERANCES: .XX ± .01 .XXX ± .005		MATERIAL 304 SSSL		FINISH 63 μinch		NEXT ASSY D1000429		DESIGNER N.Nguyen	
ANGULAR ± 0.5°						DATE 20 Aug 2010		SIZE DWG. NO. B D1001061	
						DRAFTER N.Nguyen		REV. v1	
						CHECKER M. Smith		SCALE: 4:1	
						APPROVAL C. Torrie		PROJECTION:	
						30 Sep 2010		SHEET 1 OF 1	