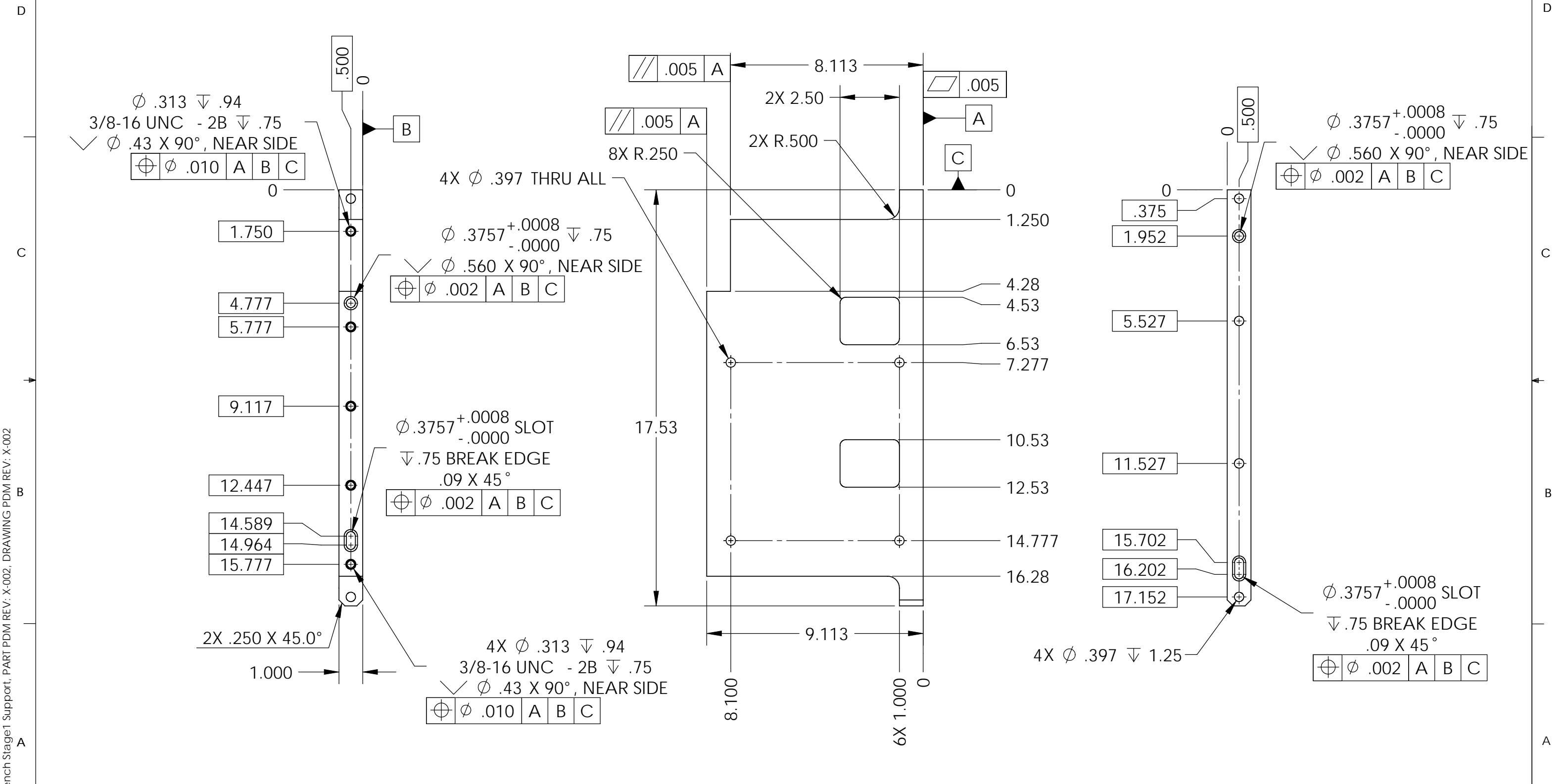


REV.	DATE	DCN #	DRAWING TREE #
v1	25 May 2010	E1000195	-
v2	03 Aug. 2010	E1000288	-

NOTES CONTINUED:
 5. SCRIBE, ENGRAVE, OR MECHANICALLY STAMP (NO INKS OR DYES) DRAWING PART NUMBER, REVISION (AND VARIANT OR "TYPE" IF APPLICABLE ON NOTED SURFACE OF PART FOLLOWED ON THE NEXT LINE WITH A THREE DIGIT SERIAL NUMBER. SERIAL NUMBERS START AT 001 FOR THE FIRST ARTICLE AND PROCEED CONSECUTIVELY. USE MINIMUM 0.12 HIGH CHARACTERS, UNLESS THE SIZE OF THE PART DICTATES SMALLER CHARACTERS. A VIBRATORY TOOL MAY BE USED.
 EXAMPLE DXXXXXX-VY, TYPE-XX, S/N XXX.
 6. APPROXIMATE WEIGHT = 12.1 LB.



D1001356 Test-Bench Stage1 Support, PART PDM REV: X-002, DRAWING PDM REV: X-002

NOTES AND TOLERANCES: (UNLESS OTHERWISE SPECIFIED)				CALIFORNIA INSTITUTE OF TECHNOLOGY MASSACHUSETTS INSTITUTE OF TECHNOLOGY		PART NAME TEST-BENCH STAGE 1 SUPPORT				
DIMENSIONS ARE IN INCHES TOLERANCES: .XX ± .015 .XXX ± .005 ANGULAR ± .5°				LIGO		DESIGNER: S.BARNUM 25 May 2010 DRAFTER: M.HILLARD 25 May 2010		SIZE: B DWG. NO.: D1001356		REV.: v2
1. INTERPRET DRAWING PER ASME Y14.5-1994. 2. REMOVE ALL SHARP EDGES, R.02 MIN. 3. DO NOT SCALE FROM DRAWING. 4. ALL MACHINING FLUIDS MUST BE FULLY SYNTHETIC, FULLY WATER SOLUBLE AND FREE OF SULFUR, SILICONE, AND CHLORINE.				SYSTEM: ADVANCED LIGO SUB-SYSTEM: SEI		CHECKER: F.MATICHARD 25 May 2010 APPROVAL: K.MASON 25 May 2010		SCALE: 1:4 PROJECTION:		SHEET 1 OF 1
MATERIAL: 6061-T6 Al FINISH: 63 μinch				NEXT ASSY: D1001366						