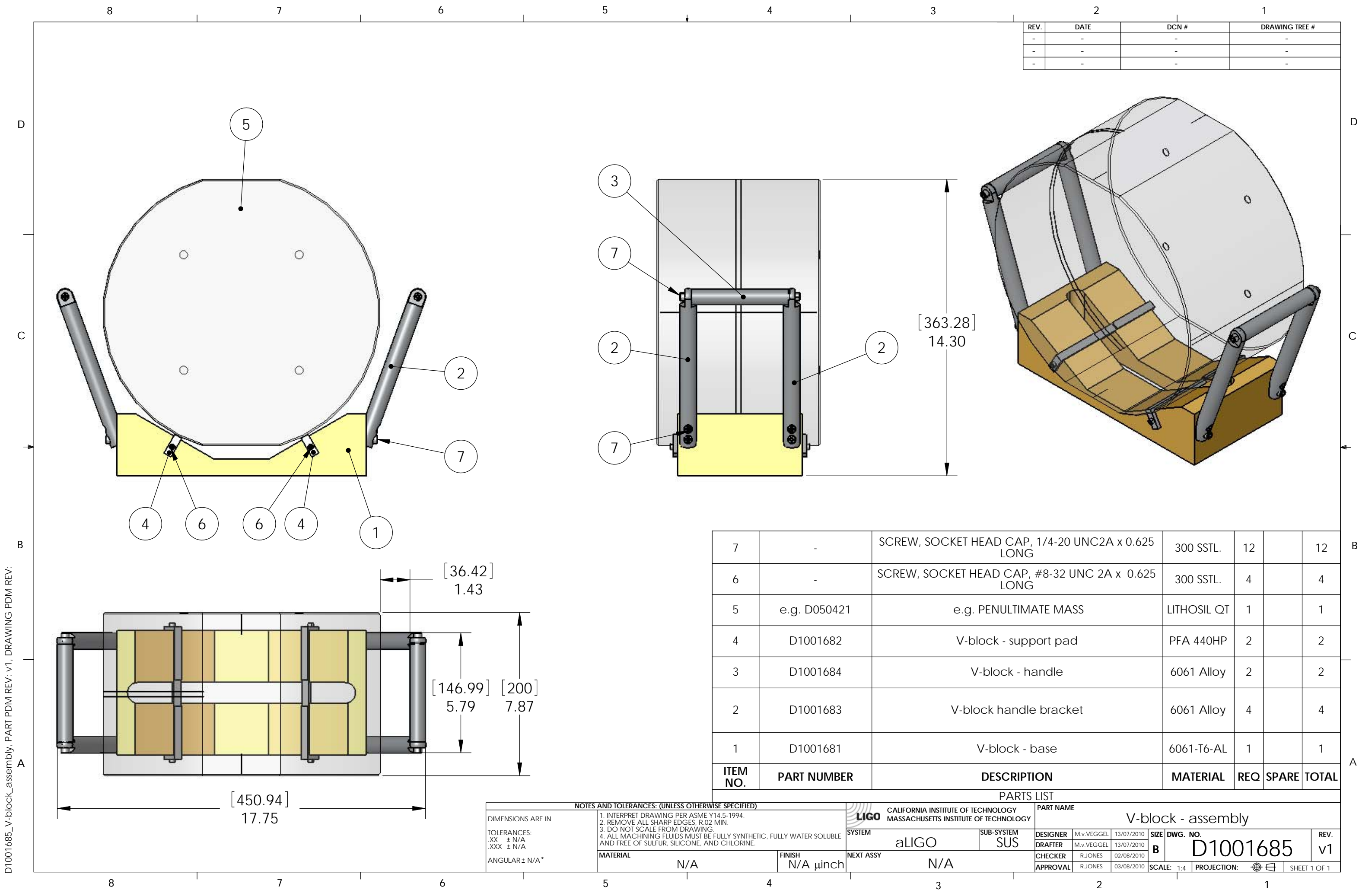


REV.	DATE	DCN #	DRAWING TREE #
-	-	-	-
-	-	-	-
-	-	-	-



ITEM NO.	PART NUMBER	DESCRIPTION	MATERIAL	REQ	SPARE	TOTAL
7	-	SCREW, SOCKET HEAD CAP, 1/4-20 UNC2A x 0.625 LONG	300 SSTL.	12		12
6	-	SCREW, SOCKET HEAD CAP, #8-32 UNC 2A x 0.625 LONG	300 SSTL.	4		4
5	e.g. D050421	e.g. PENULTIMATE MASS	LITHOSIL QT	1		1
4	D1001682	V-block - support pad	PFA 440HP	2		2
3	D1001684	V-block - handle	6061 Alloy	2		2
2	D1001683	V-block handle bracket	6061 Alloy	4		4
1	D1001681	V-block - base	6061-T6-AL	1		1

NOTES AND TOLERANCES: (UNLESS OTHERWISE SPECIFIED)

- INTERPRET DRAWING PER ASME Y14.5-1994.
- REMOVE ALL SHARP EDGES, R.02 MIN.
- DO NOT SCALE FROM DRAWING.
- ALL MACHINING FLUIDS MUST BE FULLY SYNTHETIC, FULLY WATER SOLUBLE AND FREE OF SULFUR, SILICONE, AND CHLORINE.

PARTS LIST

DIMENSIONS ARE IN		MATERIAL		FINISH		NEXT ASSY		CALIFORNIA INSTITUTE OF TECHNOLOGY MASSACHUSETTS INSTITUTE OF TECHNOLOGY		PART NAME	
TOLERANCES: .XX ± N/A .XXX ± N/A		N/A		N/A μinch		N/A		aLIGO SUS		V-block - assembly	
ANGULAR ± N/A*								DESIGNER M.v.VEGGEL 13/07/2010 DRAFTER M.v.VEGGEL 13/07/2010 CHECKER R.JONES 02/08/2010 APPROVAL R.JONES 03/08/2010		SIZE DWG. NO. B D1001685	
								SCALE: 1:4 PROJECTION:		REV. v1	

SHEET 1 OF 1

D1001685_V-block_assembly_PART PDM REV: v1, DRAWING PDM REV: