

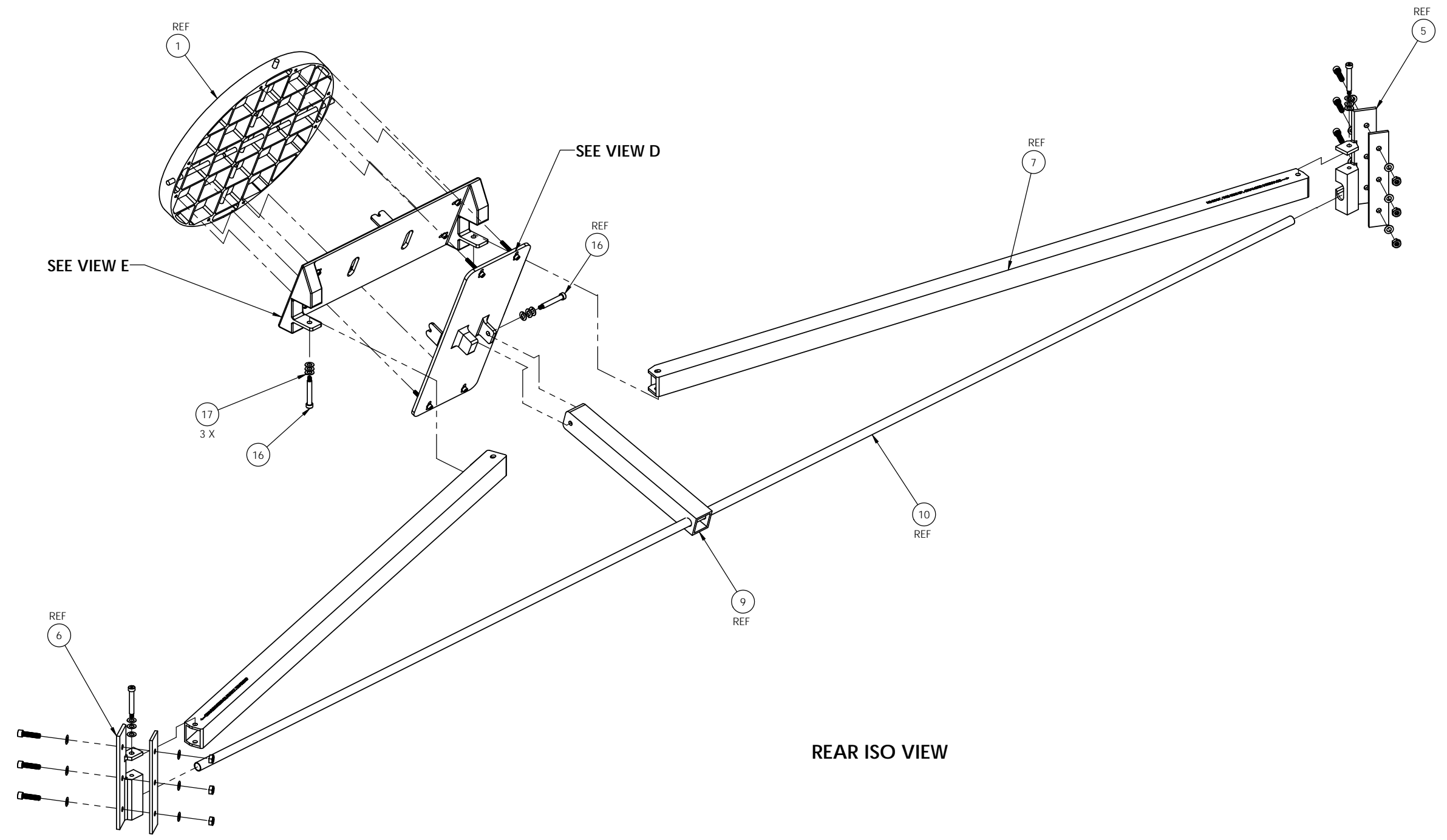
- NOTES CONTINUED:
- 5 NUTS ARE USED TO SECURE ASSEMBLY TO INTERIOR FLANGES OF THE BSC WELDMENT
 - 6 MACHINED FEATURES OF ITEM 2 MUST BE ALIGNED WITH THE FLANGES OF ITEM 4
 - 7 MACHINED FEATURES OF ITEM 2 MUST BE ALIGNED WITH FLANGES OF ITEM 3
 - 8 ITEM 15 ARE USED TO SECURE ITEM 3 TO ITEM 1
 - 9 ITEM 14 ARE USED TO SECURE ITEM 4 TO ITEM 1

REV.	DATE	DCN #	DRAWING TREE #
v1	01-OCT-2010	-	-
v2	21-DEC-2010	E1000883-v1	E1000884-v1
-	-	-	-

ITEM NO.	PART NUMBER	DESCRIPTION	MATERIAL	REQ.	SPARE	TOTAL
18	D1003328	aLIGO TCS UHV H2 ASSEMBLY INTERFACE DAMPER	VITON	2		2
17	WFV-25	WASHER, FLAT, VENTED, .26ID X .47OD X .032TK. UC COMPONENTS	18-8 SSSL, Ag PLATED	27	3	30
16	SHCV-4436	SSHDC, #10-32 UNC-A X 1.5 LG. VENTED. UC-COMPONENTS	18-8 SSST	5	1	6
15	C-820-A	SSHDC, #8-32 UNC-2A X 1-1/4 LG. VENTED. UC-COMPONENTS	18-8 SSSL, Ag PLATED	4	1	5
14	C-812-A	SSHDC, #8-32 UNC-2A X 3/4 LG. VENTED. UC-COMPONENTS	18-8 SSSL, Ag PLATED	4	1	5
13	WFV-08	WASHER, FLAT, VENTED, #8-U-C COMPONENTS	18-8 SSSL	8	2	10
12	N-2520-A	NUT, HEX, 1/4-20, UC-COMPONENTS	18-8 SSSL	6	1	7
11	C-2016-N	SSHDC, 1/4-20 UNC-2A X 1LG VENTED. UC-COMPONENTS	18-8 SSSL	6	1	7
10	D1002334	TCS UHV COARSE ADJUST PIVOT ROD	ALSI 316 ANNEALED SSSL BAR	1		1
9	D1002333	TCS UHV BACK BRACE, BSC7 & BSC8	6063-T5	1		1
8	D1002327	TCS UHV SHORT SUPPORT, BSC7 & BSC8	6063-T5	1		1
7	D1002317	TCS UHV LONG SUPPORT, BSC7 & BSC8	6063-T5	1		1
6	D1002315	TCS UHV BRACKET, SHORT SIDE, BSC7	ALSI 304	1		1
5	D1002287	TCS UHV BRACKET, LONG SIDE, BSC7	ALSI 304	1		1
4	D1002312	AZ FINE ADJUST PIVOT PLATE	6061-T6	1		1
3	D1002311	EL FINE ADJUST PIVOT PLATE	6061-T6	1		1
2	D1002313	aLIGO TCS UHV FINE ADJUST PIVOT ROD	ALSI 304	2		2
1	D1001727	aLIGO TCS H2 IN-VAC MIRROR	Copper	1		1

DIMENSIONS ARE IN INCHES TOLERANCES: .XX ± .XXX ± ANGULAR ± °		NOTES AND TOLERANCES: (UNLESS OTHERWISE SPECIFIED) 1. INTERPRET DRAWING PER ASME Y14.5-1994. 2. REMOVE ALL SHARP EDGES, R.02 MIN. 3. DO NOT SCALE FROM DRAWING. 4. ALL MACHINING FLUIDS MUST BE FULLY SYNTHETIC, FULLY WATER SOLUBLE AND FREE OF SULFUR, SILICONE, AND CHLORINE.		CALIFORNIA INSTITUTE OF TECHNOLOGY MASSACHUSETTS INSTITUTE OF TECHNOLOGY		PART NAME TCS CO2P IN-VAC STEERING OPTICS ASSY, H2, BSC7							
MATERIAL N/A		FINISH N/A μinch		NEXT ASSY D0900405		DESIGNER M. JACOBSON 18 MAY 2010		SIZE D		DWG. NO. D1001742		REV. v2	
SCALE: NONE PROJECTION:						SHEET 1 OF 4							

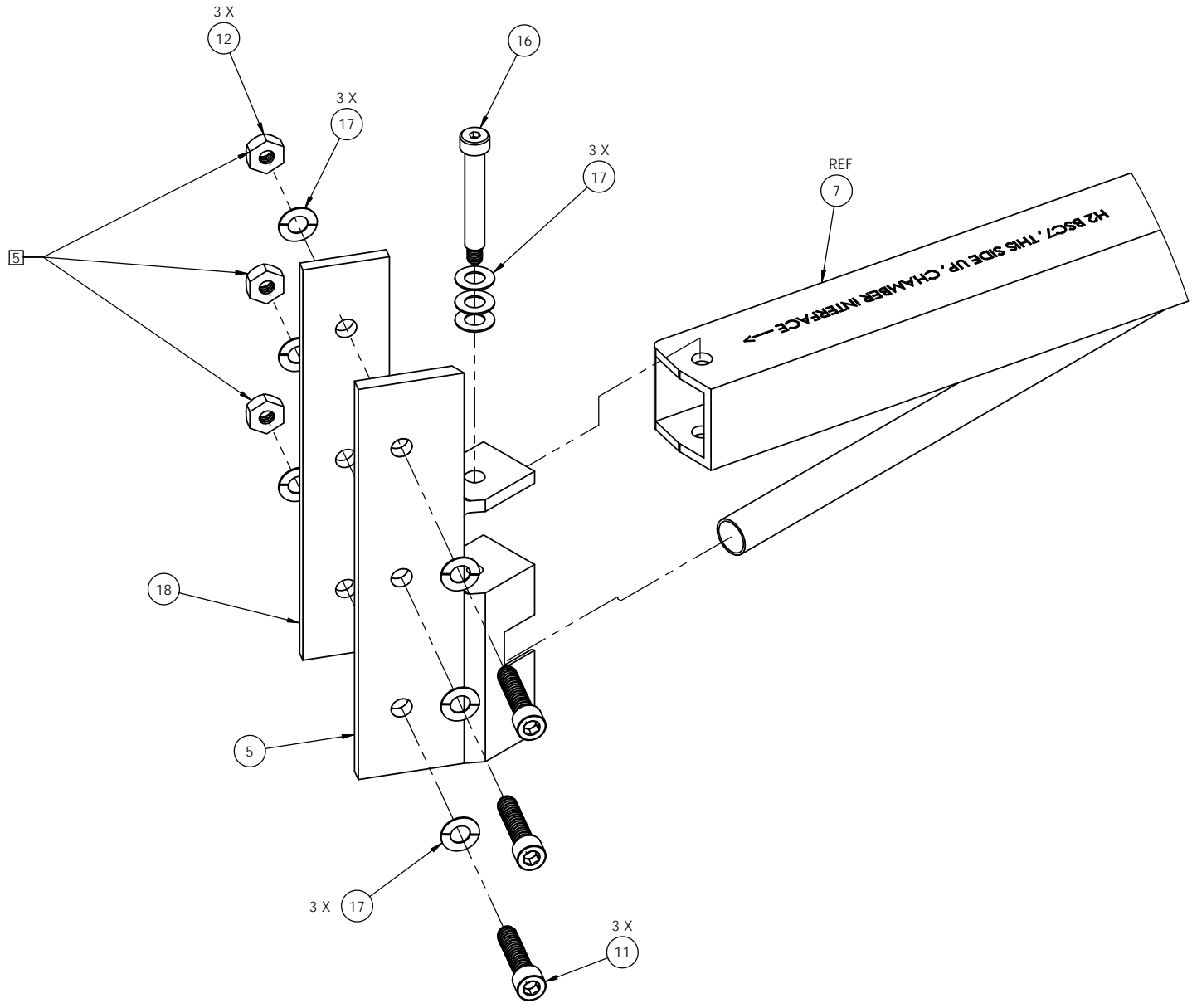
D1001742_TCS CO2P IN-VAC STEERING OPTICS ASSY, H2, BSC7, PART PDM REV: X-044, DRAWING PDM REV: X-016



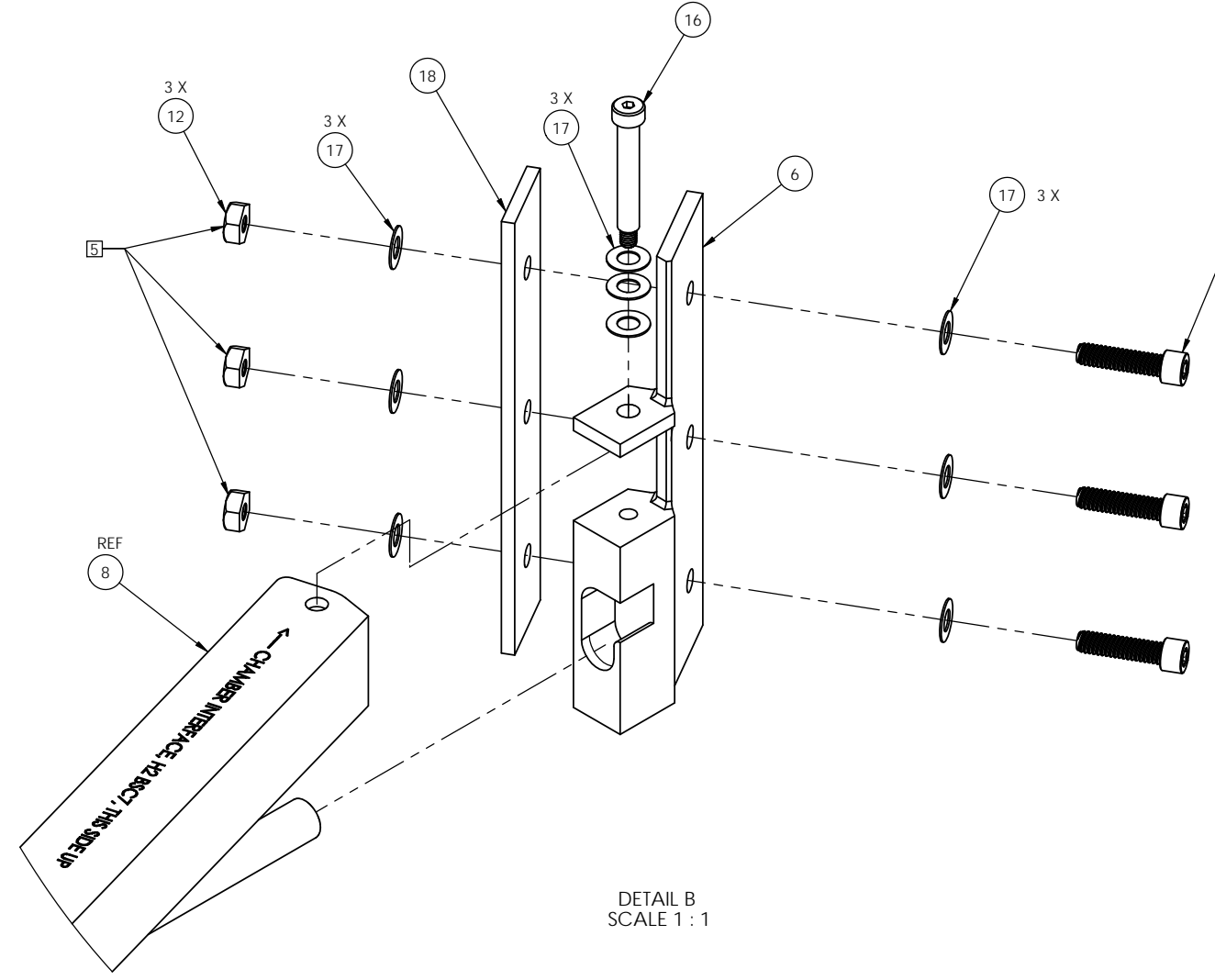
REAR ISO VIEW

CALIFORNIA INSTITUTE OF TECHNOLOGY MASSACHUSETTS INSTITUTE OF TECHNOLOGY		REV.
SIZE	DWG. NO.	REV.
D	D1001742	v2
SCALE: NONE	PROJECTION:	SHEET 2 OF 4

D1001742_103_C03P1NAC_STEERING_OPTICS_ASSY_102_BSC71.PART.PDM.REV.X-016_DRAWING.PDM.REV.X-016



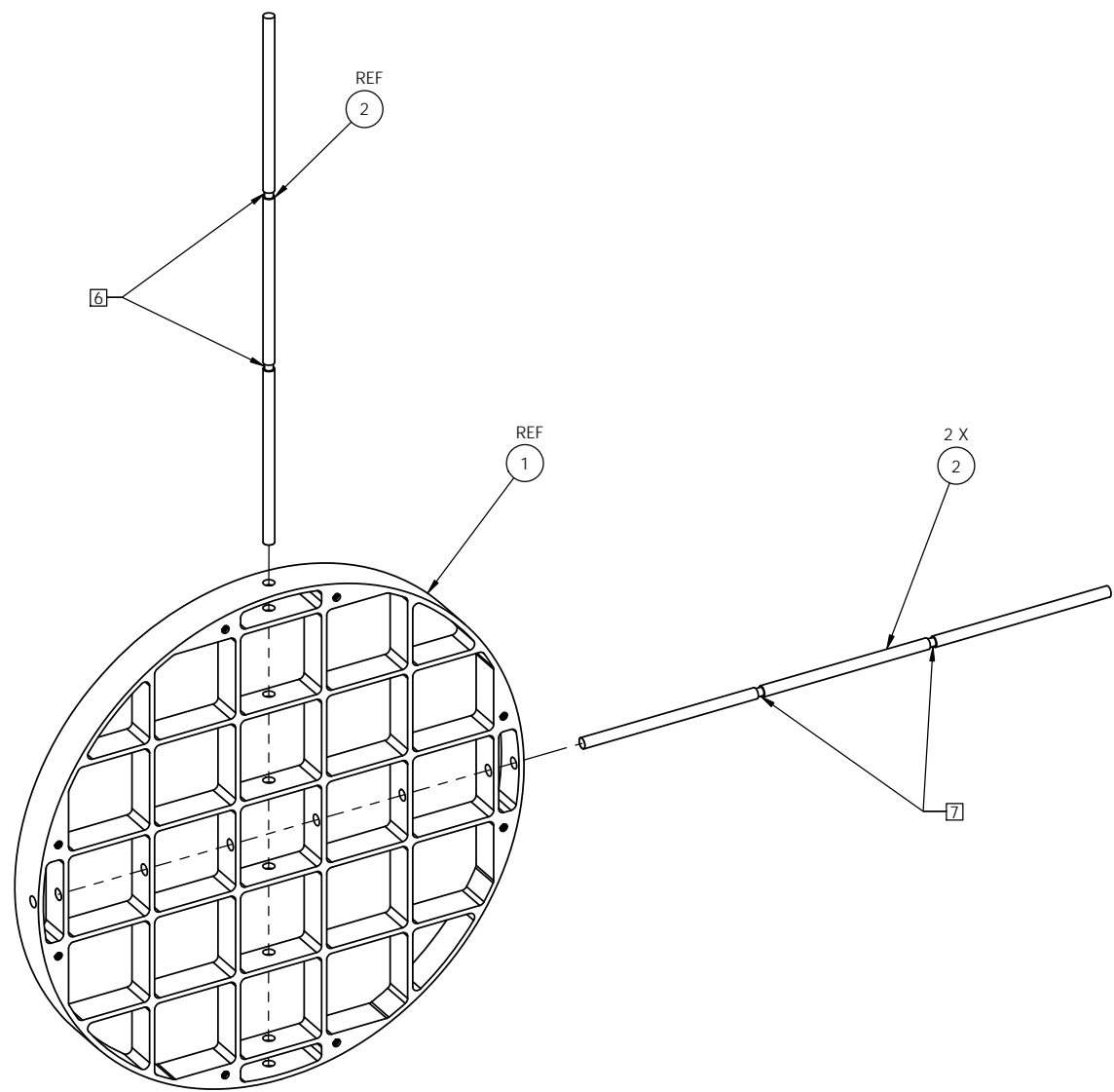
DETAIL A
SCALE 1 : 1



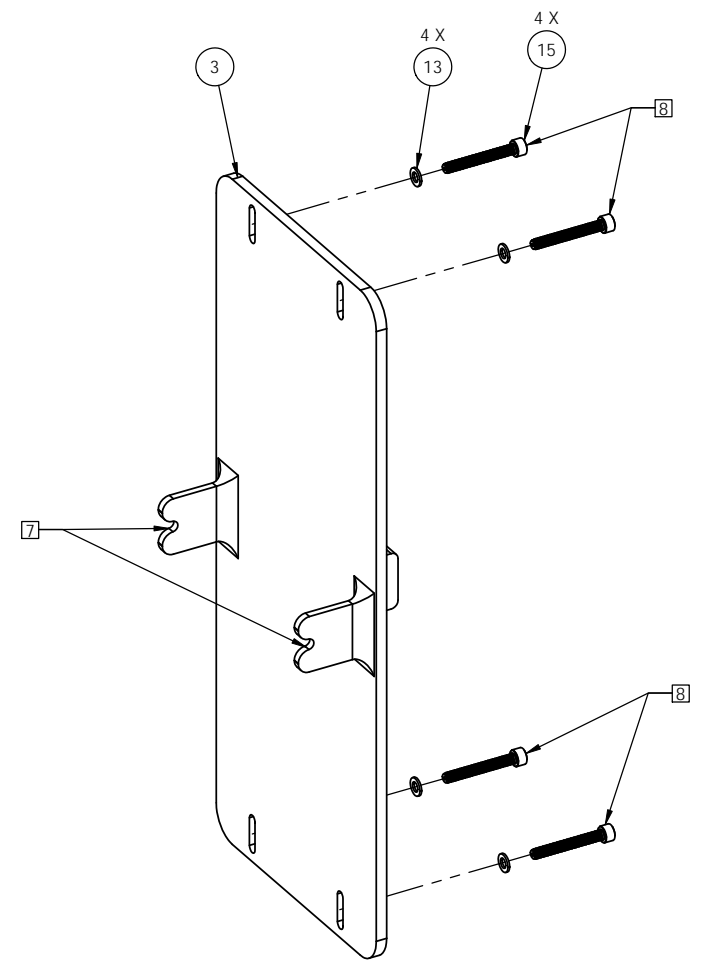
DETAIL B
SCALE 1 : 1

LIGO CALIFORNIA INSTITUTE OF TECHNOLOGY MASSACHUSETTS INSTITUTE OF TECHNOLOGY		
SIZE	DWG. NO.	REV.
D	D1001742	v2
SCALE: NONE	PROJECTION:	SHEET 3 OF 4

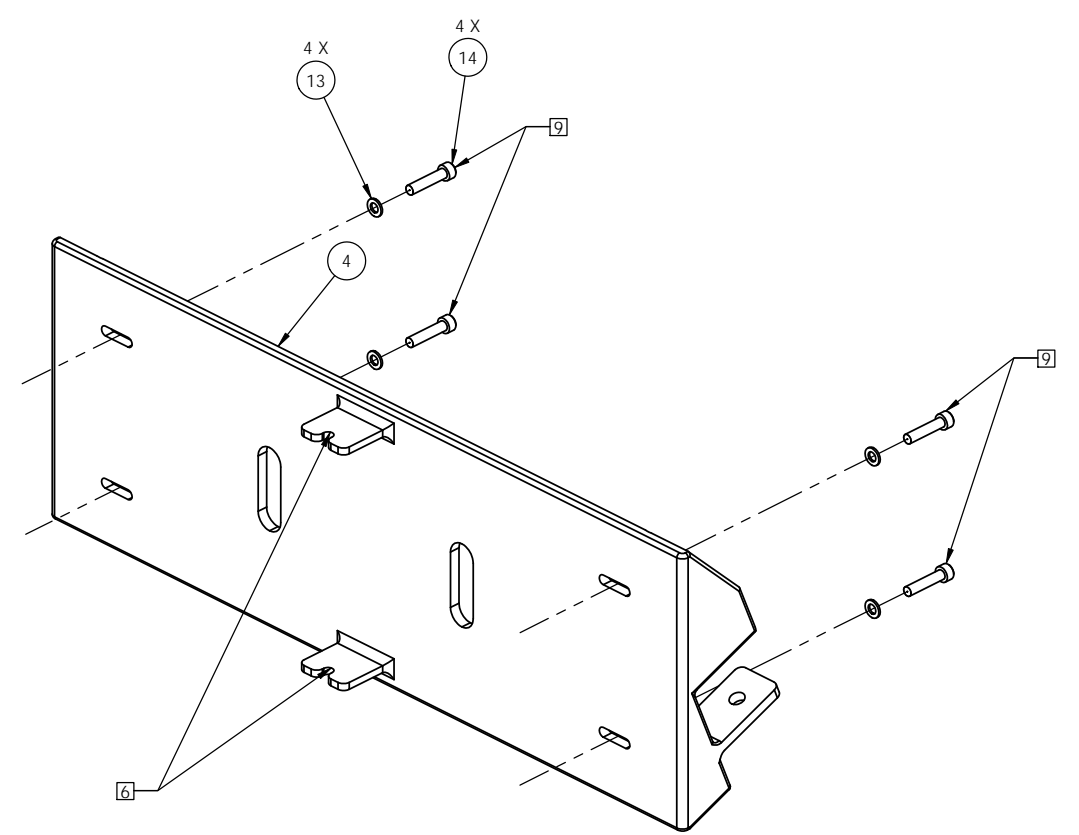
D1001742_ITS_CCDP/IN/VAC_STEERING_OPTICS_ASSY/H2_BSC7.PART.PDM.REV.X.016, DRAWING PDM.REV.X.016



VIEW C



VIEW D



VIEW E

CALIFORNIA INSTITUTE OF TECHNOLOGY MASSACHUSETTS INSTITUTE OF TECHNOLOGY		
SIZE	DWG. NO.	REV.
D	D1001742	v2
SCALE: NONE	PROJECTION:	SHEET 4 OF 4

D1001742_ICS COOP IN VAC STEERING OPTICS ASBY_H2_BSC71.PART PDM REV: X-014, DRAWING PDM REV: X-016