

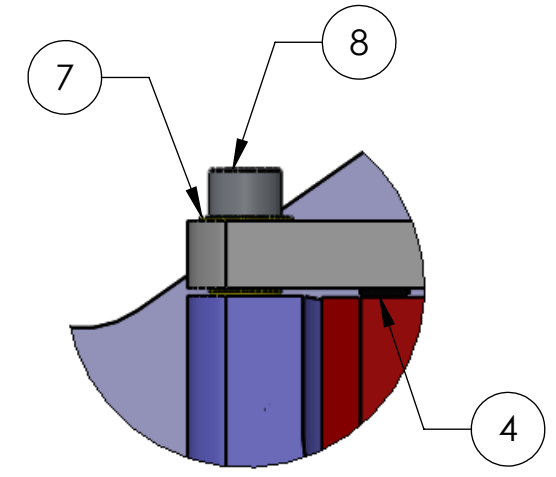
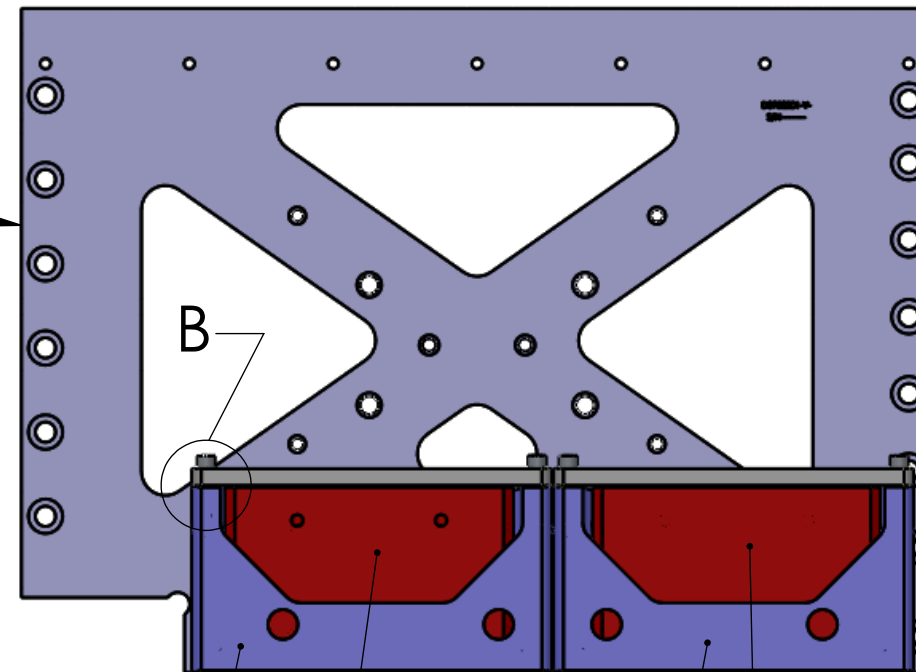
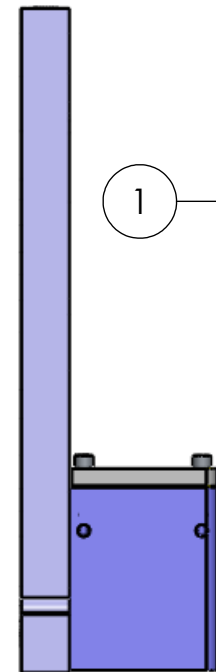
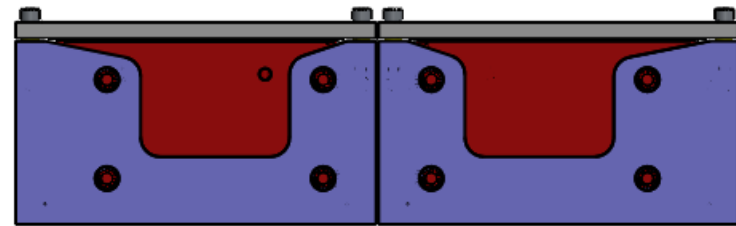
8 7 6 5 4 3 2 1

NOTES CONTINUED:

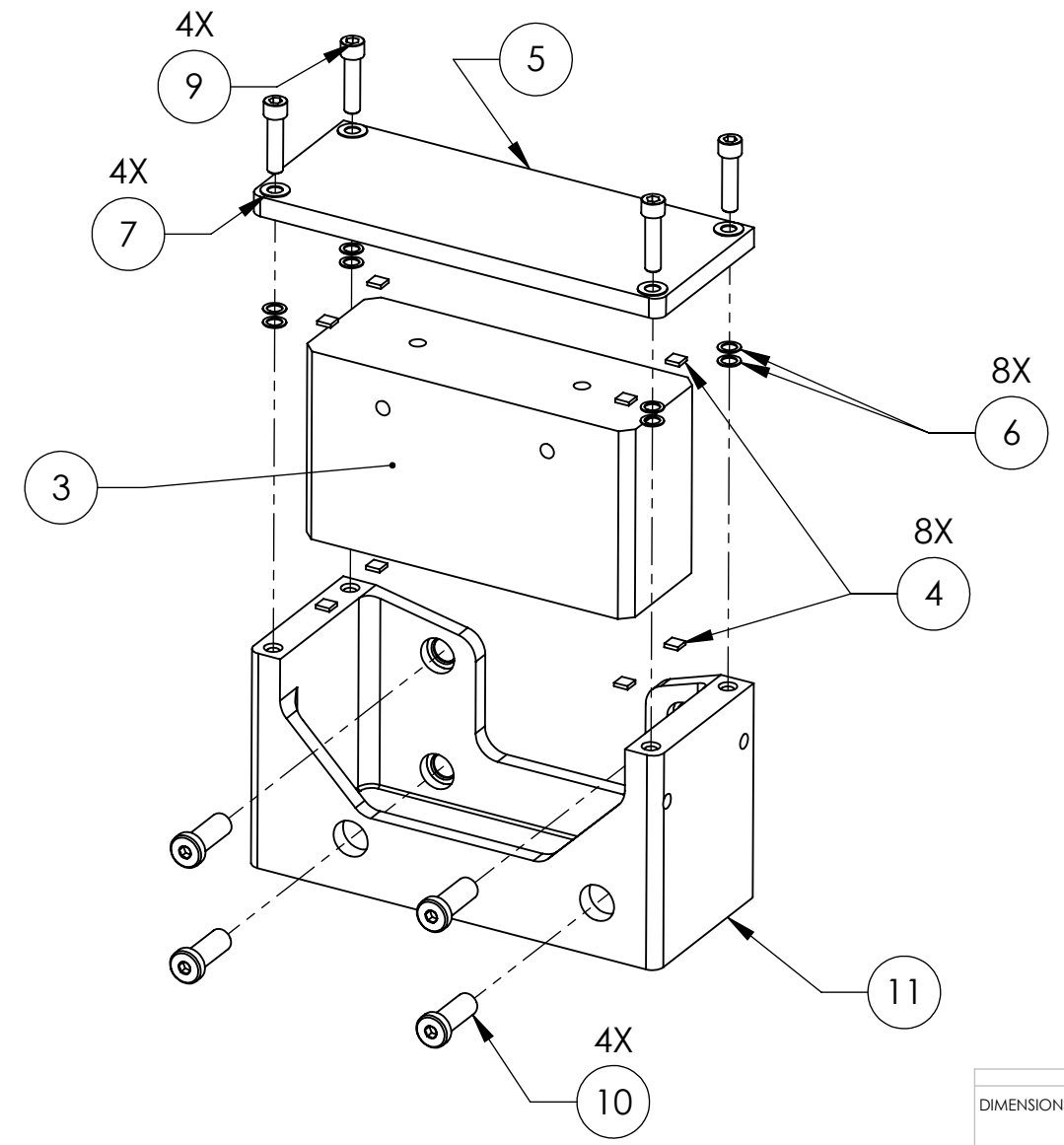
APPROXIMATE WEIGHT FOR ONE VIBRATION ABSORBER = 15.86 LBS.

VENDOR REFERENCES ARE PROVIDED AS EXAMPLES OF PARTS ALL REQUIRED SPECIFICATIONS. EQUIVALENTS ARE ALWAYS ACCEPTABLE UNLESS OTHERWISE SPECIFIED.

REV.	DATE	DCN #	DRAWING TREE #
V1	12 OCT 2010	E1100092	-
V2	28 AUG 2012	E1200705	-
-	-	-	-



DETAIL B
SCALE 1 : 1



ITEM NO.	PART NUMBER	DESCRIPTION	MATERIAL	TOTAL
10	D1001759	Left clamp for Stage 1 Vibration Absorber	6061-T6 Al	1
9	MSC 48632822	Low Head 3/8"-16, 1" length	304, 316 OR 302 SSTL	8
8	HOLOKROME_78062	SHCS, 1/4-20 x 1.0"	18-8 SS	8
7	MC MASTER 96861A600	Washer .47 od x .25 id x .02-.04 thk vented	18-8 SSTL	8
6	MCMaster_93574A513	washer 0.373" od, 0.253" id, 0.02" thck	18-8 SSTL	16
5	D1001757	Top clamp for Stage 1 Vibration Absorber	6061-T6 Al	2
4	D1000939	Viton for SEI vibration absorbers 5 Lb version	FLUROELASTOMER	16
3	D1001758	Mass for Stage 1 Vibration Absorber	304, 316 OR 302 SSTL	2
2	D1001764	Right clamp for Stage 1 Vibration Absorber	6061-T6 Al	1
1	D0902281	Door, Stage 1, aLIGO BSC ISI	6061-T6 Al	1
PARTS LIST				

NOTES AND TOLERANCES: (UNLESS OTHERWISE SPECIFIED)

DIMENSIONS ARE IN INCHES

MATERIAL	FINISH	NEXT ASSY
		D0901180

LIGO CALIFORNIA INSTITUTE OF TECHNOLOGY
MASSACHUSETTS INSTITUTE OF TECHNOLOGY

PART NAME: Stage 1 Vibration Absorber (door)

DESIGNER	S.BISCANS	02 JULY 2010	SIZE	DWG. NO.	REV.
DRAFTER	S.BISCANS	12 OCT 2010	B	D1001760	v2
CHECKER	F.MATICHARD	12 OCT 2010	SCALE:	1:4	PROJECTION:
APPROVAL	K.MASON	12 OCT 2010	SHEET 1 OF 1		

D1001760 - Stage 1 Vibration Absorber (door), PART PDM REV: X-010, DRAWING PDM REV: X-009

8 7 6 5 4 3 2 1