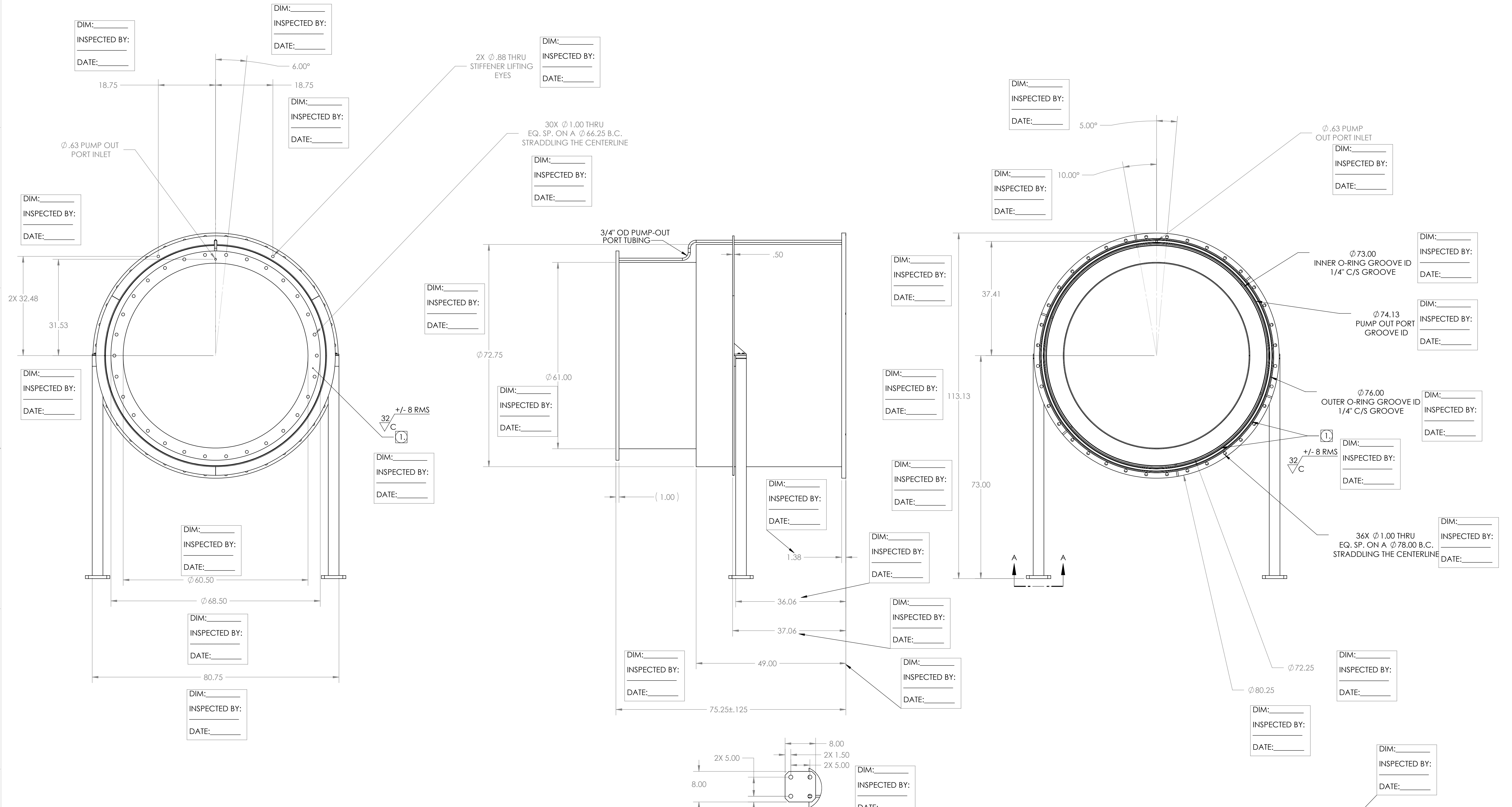


PROPRIETARY AND CONFIDENTIAL
THIS DRAWING IS THE PROPERTY OF
GNS CORPORATION. ANY
REPRODUCTION OR TRANSMISSION
WITHOUT THE WRITTEN PERMISSION OF
GNS CORPORATION IS PROHIBITED.

ZONE		REV.	DESCRIPTION	DATE	APPROVED
		A	RELEASED TO PRODUCTION	8/20/2010	MKM2



NOTES:
1 VACUUM SEALING SURFACE

MATERIAL: AISI 304/AISI 304L DUAL CERT PER SA-240
UNLESS OTHERWISE SPECIFIED: WEIGHT: 2608.18 #
DIMENSIONS ARE IN INCHES
TOLERANCES: FINISH
ANGULAR: ±1° 1/25'
XX ± .06
XXX ± .005
UNSPECIFIED RADII: R.015
BREAK EDGES: .010x45°
REMOVE ALL BURRS
// 1/4 WITHIN .050

APPROVALS	DATE
DRAFTER: MKM2	6/9/10
CHECKER: RW	6/15/10
ENGINEER: MKM2	6/9/10

GNS CORPORATION
SCIENTIFIC AND INDUSTRIAL EQUIPMENT
3200 DWIGHT RD. SUITE #100
ELK GROVE, CA 95758
916-395-3003 FAX: 916-395-3363
www.gnsolives.com

TITLE: OUTLINE, ADAPTER A-18
INSPECTION DOCUMENT

DO NOT SCALE DRAWING	D	DWG. NO. 114143-00ID	REV A
		SCALE: 1:15	SHEET 1 OF 1