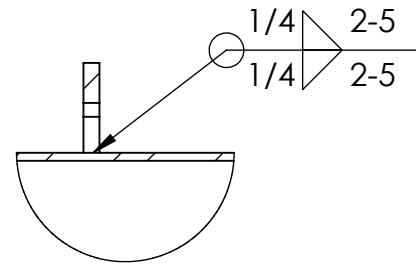
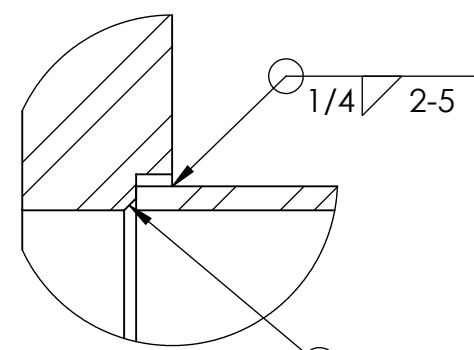


PROPRIETARY AND CONFIDENTIAL
 THE INFORMATION CONTAINED IN THIS
 DRAWING IS THE SOLE PROPERTY OF
 GNB CORPORATION. ANY
 REPRODUCTION IN PART OR AS A WHOLE
 WITHOUT THE WRITTEN PERMISSION OF
 GNB CORPORATION IS PROHIBITED.

| REVISIONS | | | | |
|-----------|------|---|-----------|----------|
| ZONE | REV. | DESCRIPTION | DATE | APPROVED |
| | A | REVISED WELD CALL-OUTS, ADDED BRACKETS | 8/11/2010 | MKM2 |
| | B | REVISED WELD CALLOUTS, ADDED ROLL-UP OD CALLOUT | 8/18/2010 | MKM2 |
| | C | RELEASED TO PRODUCTION | 8/23/2010 | MKM2 |

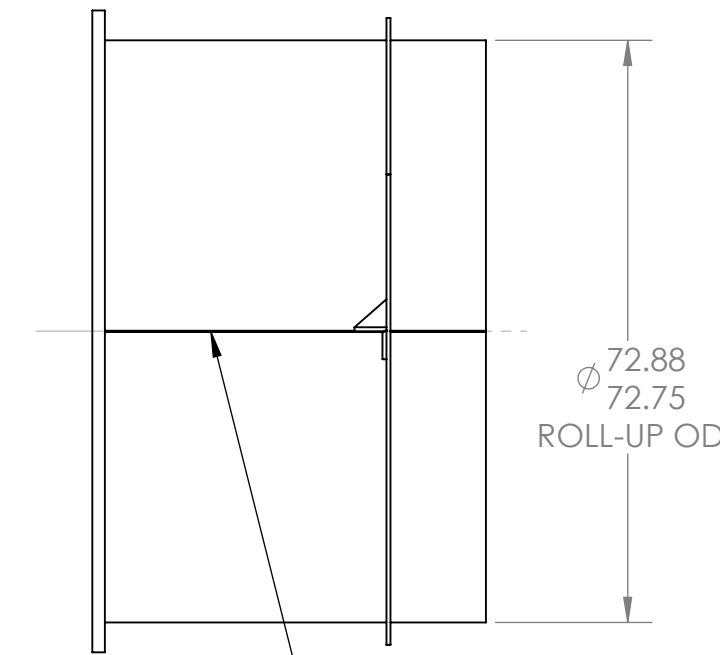


DETAIL C
 SCALE 1 : 6

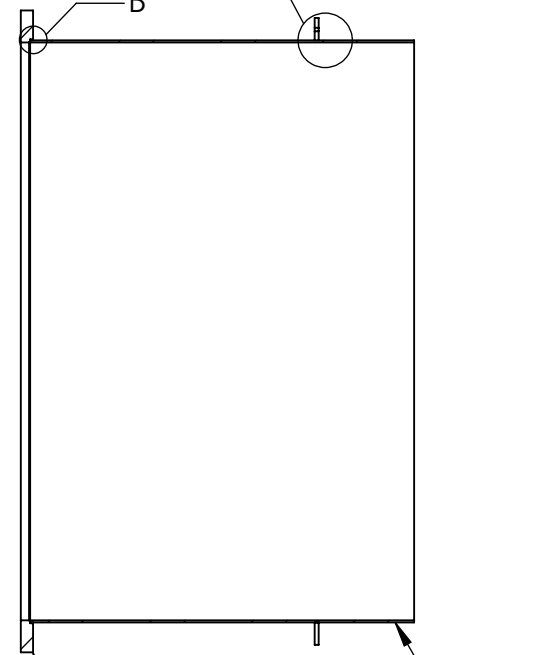


DETAIL B
 SCALE 1 : 2

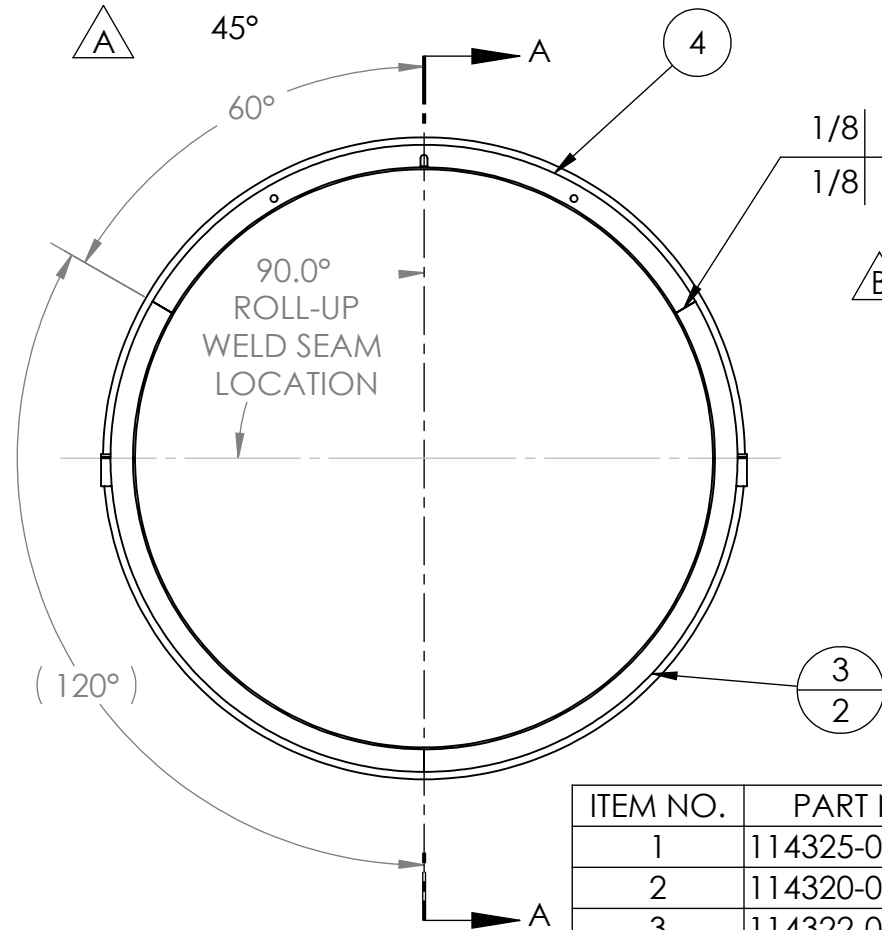
VAC TIGHT
 1/8 (3/16)



72.88
 72.75
 ROLL-UP OD



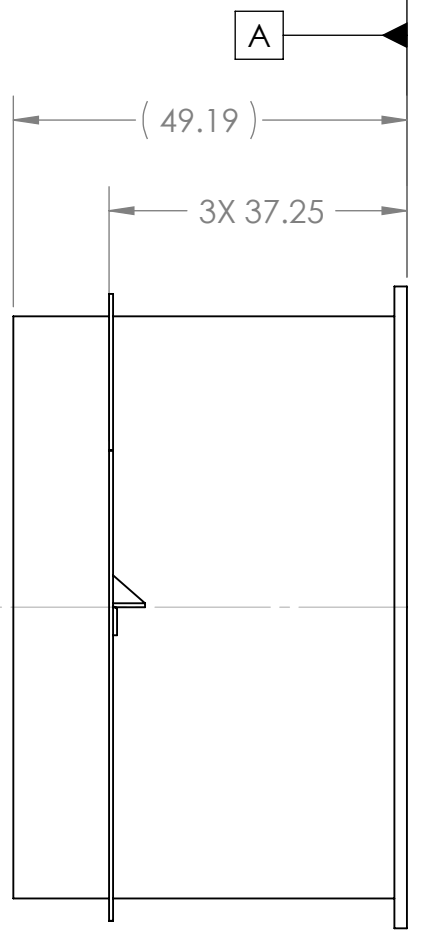
SECTION A-A



90.0°
 ROLL-UP
 WELD SEAM
 LOCATION

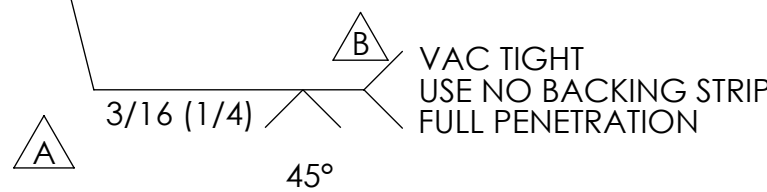
1/8
 1/8
 3X

.03 A



(49.19)

3X 37.25



VAC TIGHT
 USE NO BACKING STRIP
 FULL PENETRATION

- NOTES:
1. ALL WELD PREPS TO BE DONE BY TUNGSTEN CARBIDE CUTTING TOOLS ONLY
 2. WELD PER QP1750-W2, LIGO WELDING AND REPAIR PROCEDURE, LATEST REVISION
 3. CLEAN WELD WIRE WITH CO2 SCRUBBING
 4. INTERNAL WELD SURFACE TO BE SMOOTH BUT NOT GROUND
 5. ALL WELDS TO BE GTAW UNLESS OTHERWISE NOTED
 6. ALL INTERNAL WELDS TO BE CONTINUOUS AND VACUUM TIGHT
 7. NO POST WELD HEAT TREATMENT IS REQUIRED

| ITEM NO. | PART NUMBER | DESCRIPTION | QTY. |
|----------|-------------|-----------------------------|------|
| 1 | 114325-00S | FLANGE, LARGE, ADAPTER A-18 | 1 |
| 2 | 114320-00S | ROLL-UP, ADAPTER A-18 | 1 |
| 3 | 114322-01S | STIFFENER, ADAPTER A-18 | 2 |
| 4 | 114322-00S | STIFFENER, ADAPTER A-18 | 1 |
| 5 | 114447-00WM | WELDMENT, BRACKET, A-18 | 2 |
| 6 | 114448-00S | PLATE, BRACE, A-18 | 2 |

MATERIAL: AISI 304/AISI 304L DUAL CERT PER SA240

UNLESS OTHERWISE SPECIFIED:
 DIMENSIONS ARE IN INCHES
 TOLERANCES:
 ANGULAR: ± 0°30'
 .XX ± .03
 .XXX ± .005
 UNSPECIFIED FILLETS: R.015
 BREAK EDGES .010x45°
 REMOVE ALL BURRS

FINISH 125
 WITHIN .03

THIRD ANGLE PROJECTION



| | |
|------------------|---------|
| WEIGHT: 1317.53# | |
| APPROVALS | DATE |
| DRAFTER MKM2 | 6/28/10 |
| CHECKER RW | 7/9/10 |
| ENGINEER MKM2 | 6/28/10 |

GNB CORPORATION
 SCIENTIFIC AND INDUSTRIAL EQUIPMENT
 3200 DWIGHT RD. SUITE 100
 ELK GROVE, CA, 95758
 916-395-3003 FAX: 916-395-3363
 www.gnbvalves.com

| | |
|--|----------------------|
| TITLE: WELDMENT, BASE, ADAPTER A-18 | |
| DO NOT SCALE DRAWING | DWG. NO. 114317-00WS |
| SCALE: 1:24 | SHEET 1 OF 1 |
| REV C | |