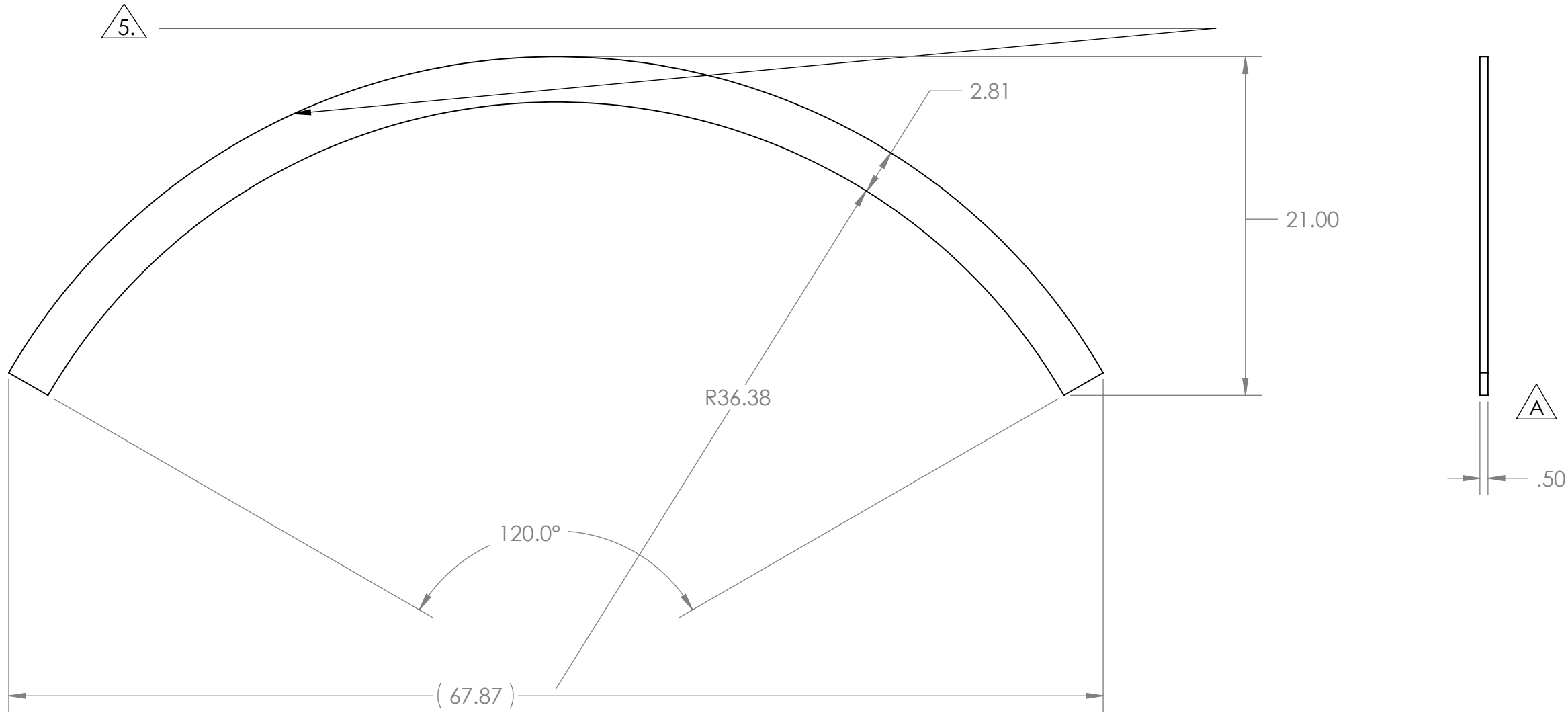


PROPRIETARY AND CONFIDENTIAL  
 THE INFORMATION CONTAINED IN THIS  
 DRAWING IS THE SOLE PROPERTY OF  
 GNB CORPORATION. ANY  
 REPRODUCTION IN PART OR AS A WHOLE  
 WITHOUT THE WRITTEN PERMISSION OF  
 GNB CORPORATION IS PROHIBITED.

REVISIONS				
ZONE	REV.	DESCRIPTION	DATE	APPROVED
	A	REMOVED CHAMFERS FOR CHANGED WELD TYPE	8/18/2010	MKM2
	B	RELEASED TO PRODUCTION	8/23/2010	MKM2



- NOTES:**
- THE FOLLOWING ARE NOT ALLOWED: GRINDING, HONING, LAPPING, POLISHING, BUFFING, SANDING, BLASTING.
  - NO HYDROCARBONS ALLOWED IN THE COOLANT. COOLANT LIMITS AS FOLLOWS
    - WATER LEACHABLE CHLORIDES: 100PPM
    - TOTAL HALOGENS (INCLUDING CHLORIDES): 1000PPM
    - TOTAL SULFUR: 1000PPM
  - DO NOT ALLOW PART TO BE CONTAMINATED BY CARBON STEEL OR IRON CONTACT.
  - MACHINING TO BE IN LINE WITH LIGO SPECIFICATION E0900406, LATEST REVISION.
5. USING A VIBRATORY TOOL WITH A TIP WITH A MINIMUM RADIUS OF .005", ENGRAVE THE FOLLOWING ON THE INDICATED SURFACE:
- HEAT NUMBER
  - LOT NUMBER
  - PART NUMBER
6. A 2"X12" COUPON OF MATERIAL FROM THE SAME LOT OF MATERIAL MUST BE PROVIDED WITH EACH PIECE.

DESCRIPTION		PLT, .50 THK, 21.0 WD, 67.88 LG	
MATERIAL:		AISI 304/AISI 304L DUAL CERT PER SA240	
UNLESS OTHERWISE SPECIFIED:		WEIGHT: 32.16#	
DIMENSIONS ARE IN INCHES		FINISH 125	
TOLERANCES:		APPROVALS	
ANGULAR: ± 0°30'		DATE	
.XX ± .03		DRAFTER MKM2 7/1/10	
.XXX ± .005		CHECKER RW 7/9/10	
UNSPECIFIED FILLETS: R.015		ENGINEER MKM2 7/1/10	
BREAK EDGES .010x45°		TITLE: STIFFENER, ADAPTER A-18	
REMOVE ALL BURRS		DO NOT SCALE DRAWING	
//, □, ⊥ WITHIN .03		SCALE: 1:8	
THIRD ANGLE PROJECTION		DWG. NO. 114322-01S	
		SHEET 1 OF 1	
		REV B	

**GNB CORPORATION**  
 SCIENTIFIC AND INDUSTRIAL EQUIPMENT  
 3200 DWIGHT RD. SUITE 100  
 ELK GROVE, CA, 95758  
 916-395-3003 FAX: 916-395-3363  
 www.gnbvalves.com