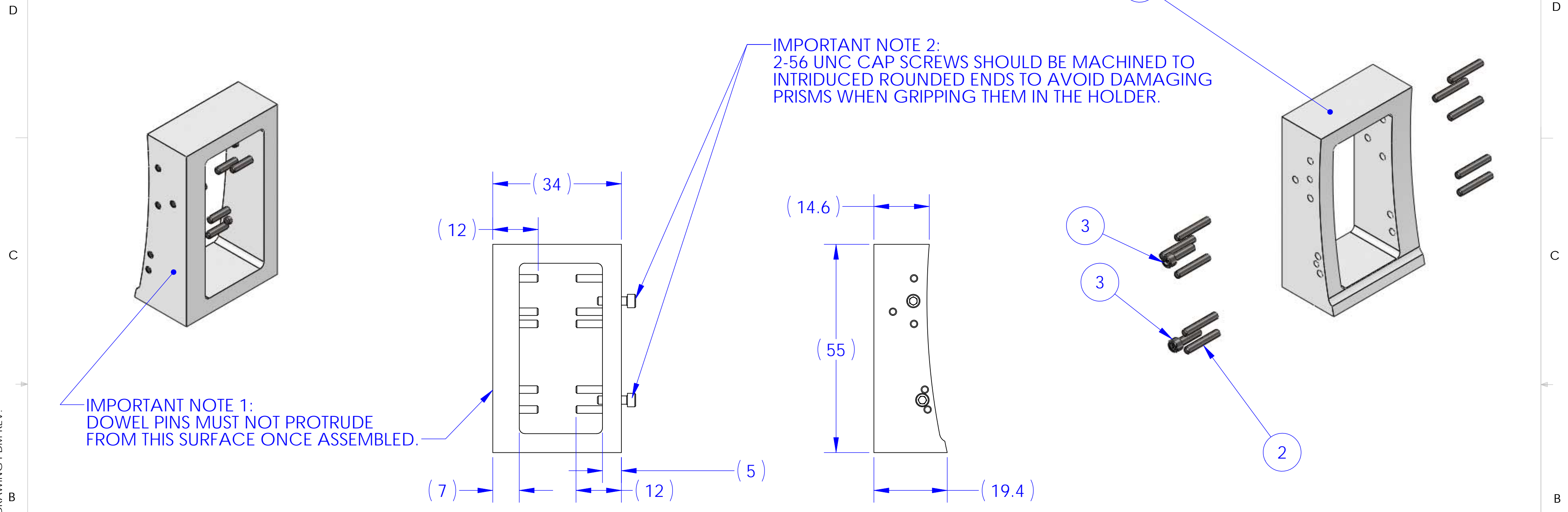


8 7 6 5 4 3 2 1

NOTES CONTINUED:
 ⑤ SCRIBE, ENGRAVE, OR MECHANICALLY STAMP (NO INKS OR DYES) DRAWING PART NUMBER, REVISION (AND VARIANT OR "TYPE" IF APPLICABLE) ON NOTED SURFACE OF PART FOLLOWED ON THE NEXT LINE WITH A THREE DIGIT SERIAL NUMBER. SERIAL NUMBERS START AT 001 FOR THE FIRST ARTICLE AND PROCEED CONSECUTIVELY. USE MINIMUM 0.12" HIGH CHARACTERS, UNLESS THE SIZE OF THE PART DICTATES SMALLER CHARACTERS. A VIBRATORY TOOL MAY BE USED.
 EXAMPLE: DXXXXXX-VY, TYPE-XX, S/N XXX

REV.	DATE	DCN #	DRAWING TREE #



ITEM NO.	PART NUMBER	DESCRIPTION	QTY.
1	D1002153_aLIGO_BSFM_PRISM_HOLDER	BS/FM prism holder	1
2	McMaster-Carr 91585A010	SSTL DOWEL PIN_2mm DIAMETER (L=12mm)	10
3	McMaster-Carr 92185A078	2-56 UNC SOCKETHEAD CAP SCREW, L=0.3125"	2

NOTES AND TOLERANCES: (UNLESS OTHERWISE SPECIFIED)

1. INTERPRET DRAWING PER ASME Y14.5-1994.
 2. REMOVE ALL SHARP EDGES, R.02 MIN.
 3. DO NOT SCALE FROM DRAWING.
 4. ALL MACHINING FLUIDS MUST BE FULLY SYNTHETIC, FULLY WATER SOLUBLE AND FREE OF SULFUR, SILICONE, AND CHLORINE.

DIMENSIONS ARE IN MILLIMETERS
 TOLERANCES:
 .X ± N/A
 .XX ± N/A
 ANGULAR ± N/A*

MATERIAL: N/A
 FINISH: N/A μm

CALIFORNIA INSTITUTE OF TECHNOLOGY
 MASSACHUSETTS INSTITUTE OF TECHNOLOGY
 SYSTEM: aLIGO SUS
 SUB-SYSTEM: BS/FM
 NEXT ASSY: D1002148

PART NAME: Prism Holder Assembly

DESIGNER	M.V.VEGGEL	SEPT 10	SIZE	DWG. NO.	REV.
DRAFTER	R.JONES	OCT10	B	D1002152	v1
CHECKER	M.V.VEGGEL	OCT 10	SCALE: 1:1	PROJECTION:	SHEET 1 OF 1
APPROVAL	--	--			

8 7 6 5 4 3 2 1

D1002152_aLIGO_BSFM_PRISM_HOLDER_ASSEMBLY, PART PDM REV: v1, DRAWING PDM REV: