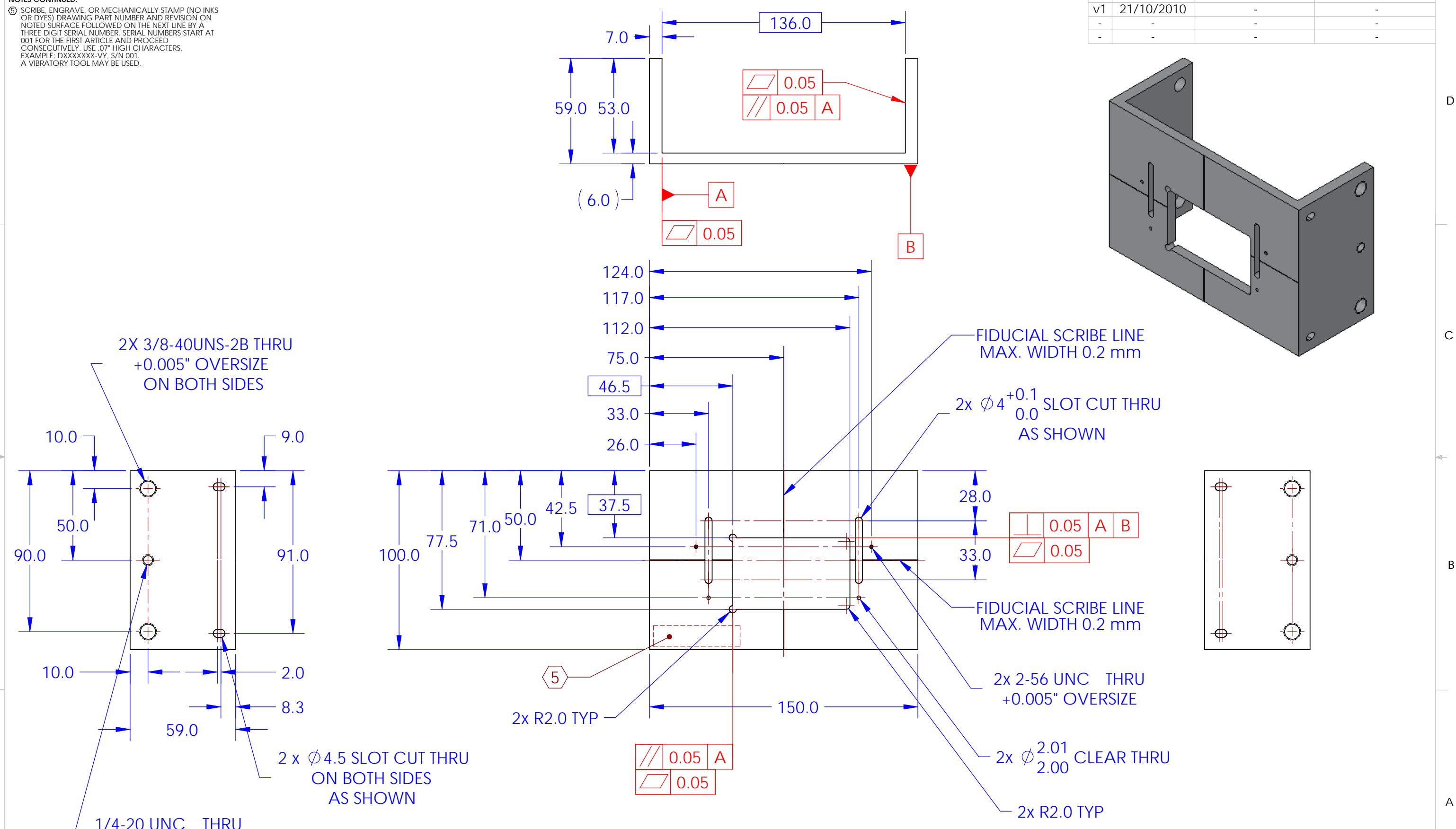


REV.	DATE	DCN #	DRAWING TREE #
v1	21/10/2010	-	-
-	-	-	-
-	-	-	-

NOTES CONTINUED:

⑤ SCRIBE, ENGRAVE, OR MECHANICALLY STAMP (NO INKS OR DYES) DRAWING PART NUMBER AND REVISION ON NOTED SURFACE FOLLOWED ON THE NEXT LINE BY A THREE DIGIT SERIAL NUMBER. SERIAL NUMBERS START AT 001 FOR THE FIRST ARTICLE AND PROCEED CONSECUTIVELY. USE .07" HIGH CHARACTERS. EXAMPLE: DXXXXXX-VY, S/N 001. A VIBRATORY TOOL MAY BE USED.

D1002203_aLIGO_ERM_PRISM_BONDING_BASEPLATE, PART PDM REV: v1, DRAWING PDM REV:



NOTES AND TOLERANCES: (UNLESS OTHERWISE SPECIFIED)				LIGO CALIFORNIA INSTITUTE OF TECHNOLOGY MASSACHUSETTS INSTITUTE OF TECHNOLOGY		PART NAME	
DIMENSIONS ARE IN mm TOLERANCES: .X ± 0.1 .XX ± 0.01 ANGULAR $\pm 0.2^\circ$				1. INTERPRET DRAWING PER ASME Y14.5-1994. 2. REMOVE ALL SHARP EDGES, R.5 MIN. 3. DO NOT SCALE FROM DRAWING. 4. ALL MACHINING FLUIDS MUST BE FULLY SYNTHETIC, FULLY WATER SOLUBLE AND FREE OF SULFUR, SILICONE, AND CHLORINE.		aLIGO ERM PRISM BONDING BASEPLATE	
MATERIAL		FINISH		SYSTEM		SUB-SYSTEM	
6061 Alloy		1.6 μ m		aLIGO		SUS	
NEXT ASSY				DESIGNER		DATE	
D1002202				M.v.Veggel		17/08/2010	
DWG. NO.				DRAFTER		DATE	
B D1002203				M.v.Veggel		05/10/2010	
REV.				CHECKER		DATE	
v1				R.Jones		12/10/2010	
SCALE: 1:2		PROJECTION:		SHEET 1 OF 1			