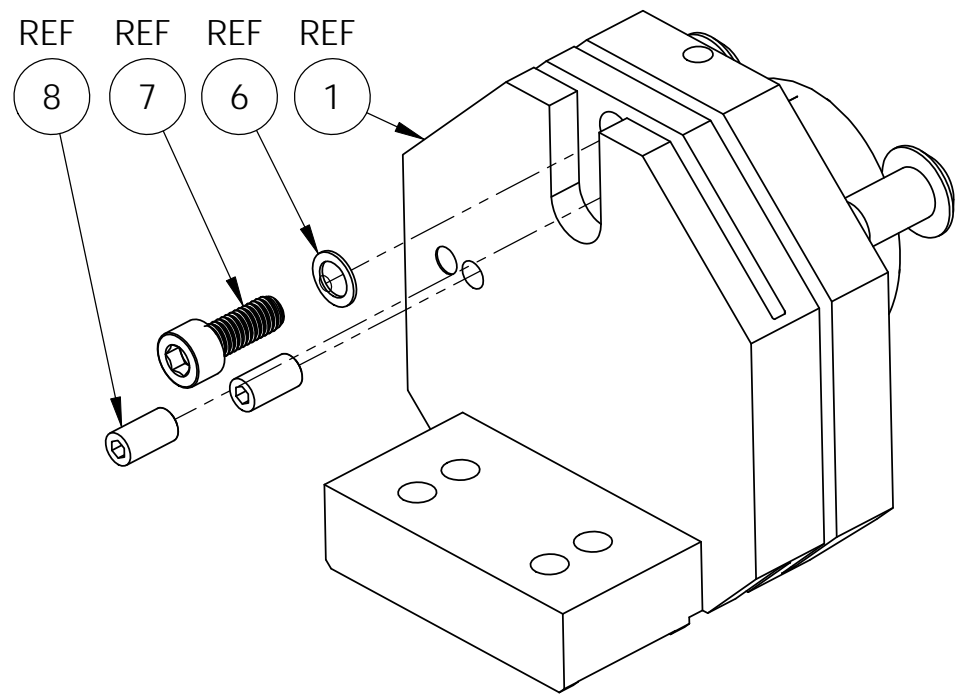
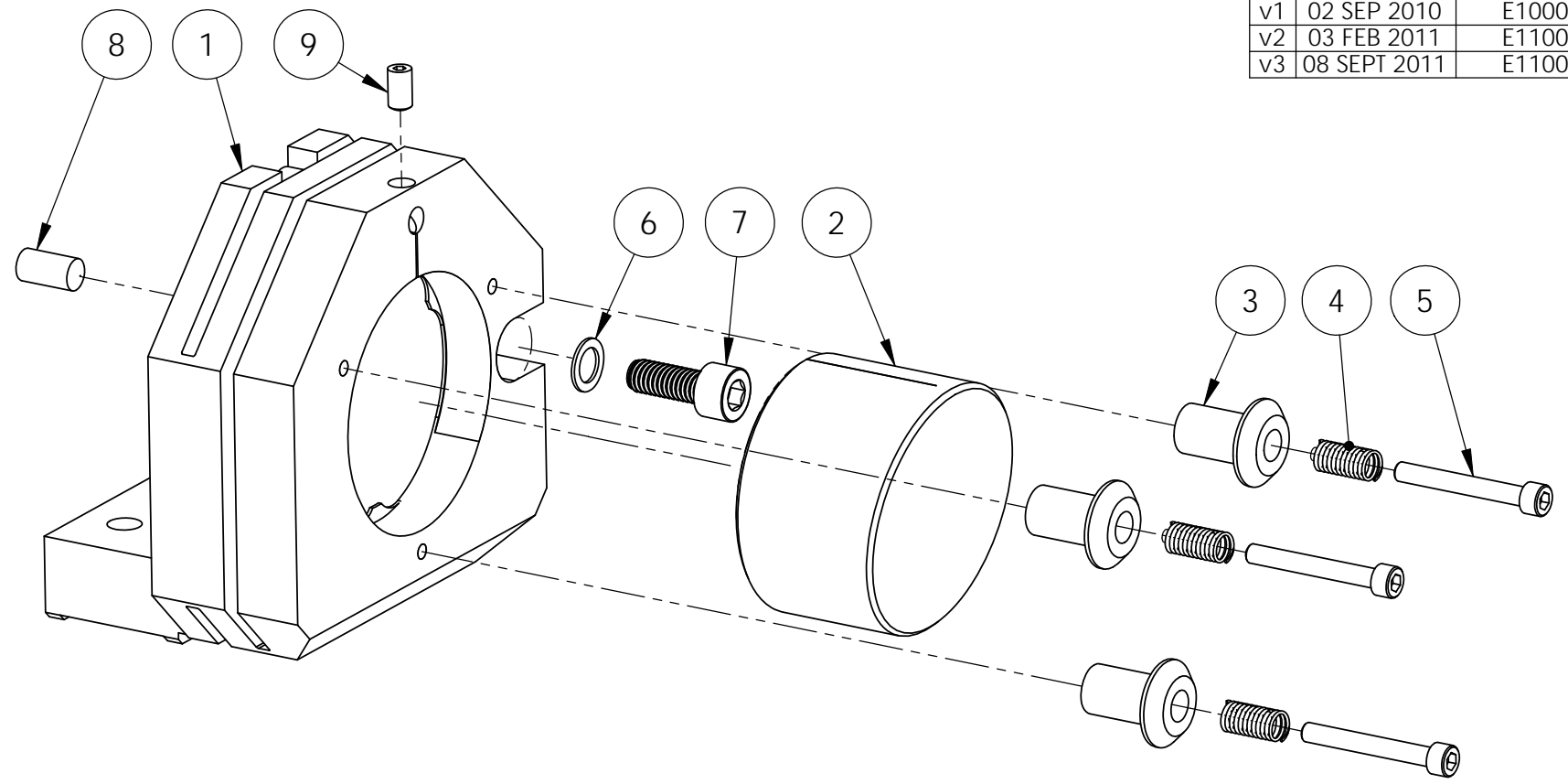


D1002210_aLIGO_TMS FLEXIBLE SEC MIRROR MT. ASSY., PART PDM REV: X-177, DRAWING PDM REV: X-027

NOTES CONTINUED:
 5. BAG AND TAG PARTS SEPARATELY WITH THEIR DRAWING PART NUMBER, REVISION, AND SERIAL NUMBER. SERIAL NUMBERS START AT 001 (UNLESS OTHERWISE SPECIFIED) FOR THE FIRST ARTICLE AND PROCEED CONSECUTIVELY. EXAMPLE: DXXXXXX-vY, S/N-001
 6. APPROXIMATE WEIGHT = 0.672 LBS.
 7. ITEMS 5, 7, & 8 TO BE ELECTRO-POLISH PER LIGO SPECIFICATION E0900364-v7, SECTION 5.2.2.

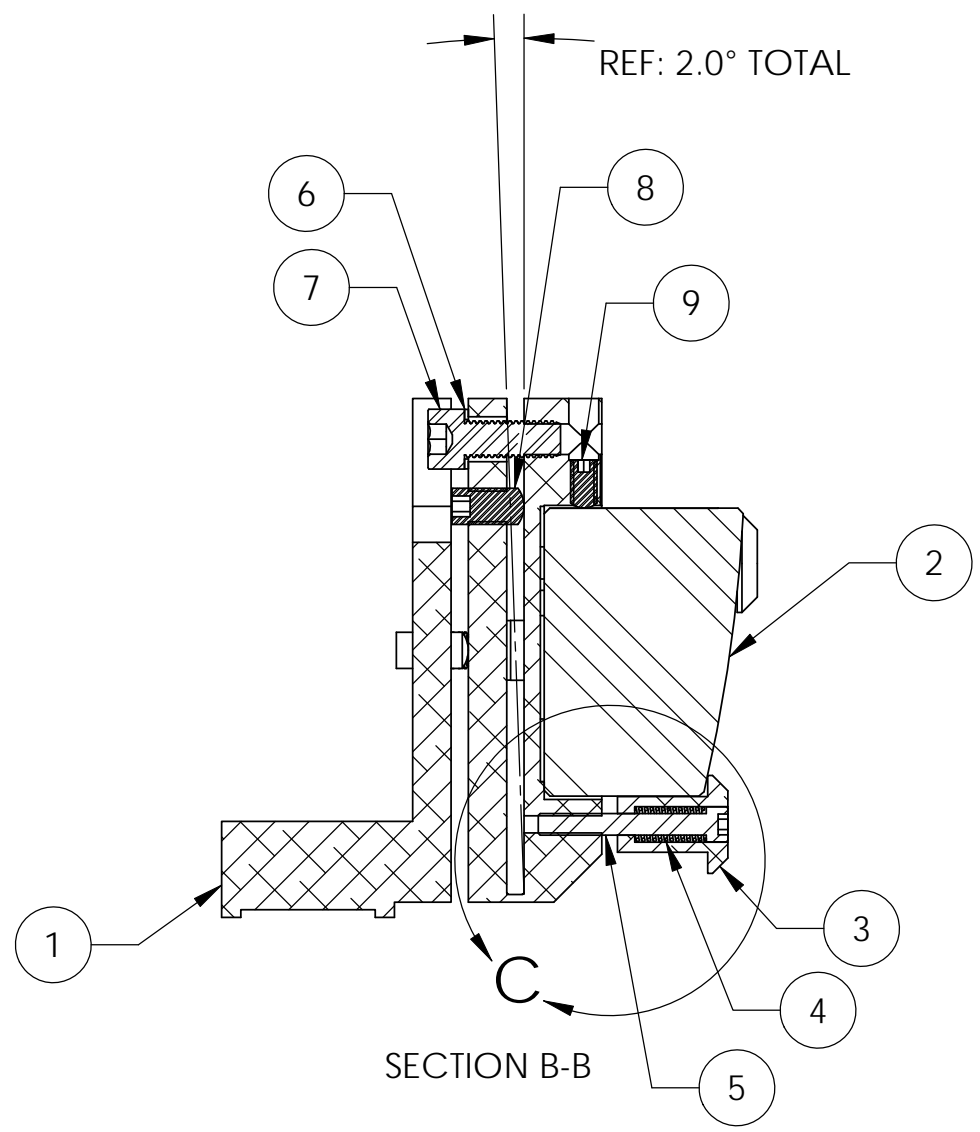
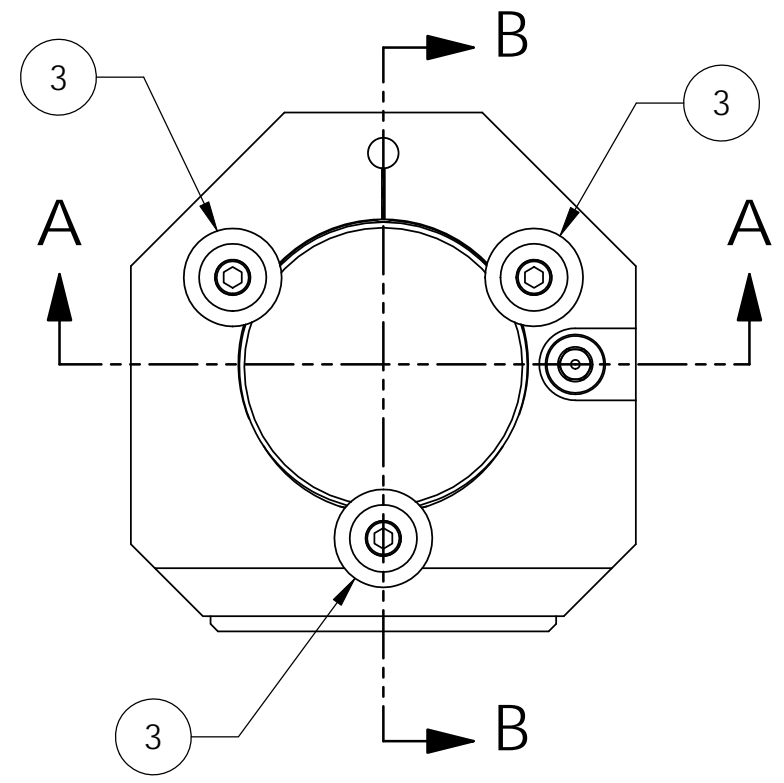
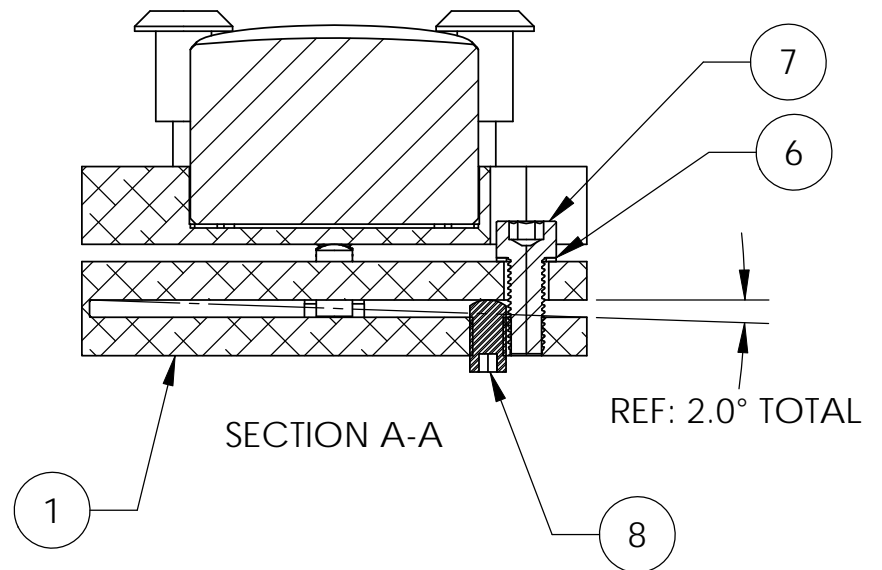
REV.	DATE	DCN #	BOM #
v1	02 SEP 2010	E1000383-v1	E1000459-v1
v2	03 FEB 2011	E1100080-v1	E1000459-v2
v3	08 SEPT 2011	E1100351-v1	E1000459-v3




ITEM NO.	PART NUMBER	DESCRIPTION	MATERIAL	REQ	SPARE	TOTAL
9	92778A071	McMASTER, HEX SOCKET SET SCREW, OVAL POINT, NO 6-32 X .25 LG, SSTL	18-8 SSTL	1	1	2
7	8	McMASTER, HEX SOCKET SET SCREW, OVAL POINT, NO 10-32 X .375 LG, SSTL	18-8 SSTL	2	2	4
7	7	McMASTER, SOCKET HEAD CAP SCREW, NO 10-32 X .50 LG, SSTL (MS 16996-10 OR EQUIV)	300 SSTL	2	2	4
6	93574A438	McMASTER, FLAT WASHER, .206 ID X .31 OD X .02 THK, SSTL (OR EQUIV)	18-8 SSTL	2	2	4
7	5	U-C COMP, SOCKET HEAD CAP SCREW, #4-40 X .875 LG, SSTL	18-8 SSTL	3	3	6
4	9002T15	Mc MASTER, COMPRESSION SPRING .180 OD X .018 WD X .50 LG, 5.83#/IN (OR EQUIV)	302 SSTL	3	3	6
3	D1100114	TMS TELESCOPE SECONDARY MIRROR CLAMP	6061-T6 Al	3	0	3
2	D0901565	ETM TELESCOPE SECONDARY PARABOLIC MIRROR	ZERODUR	1	0	1
1	D1002211	aLIGO TMS FLEXIBLE SEC MIRROR MOUNT	6061-T6 Al	1	0	1
PARTS LIST						

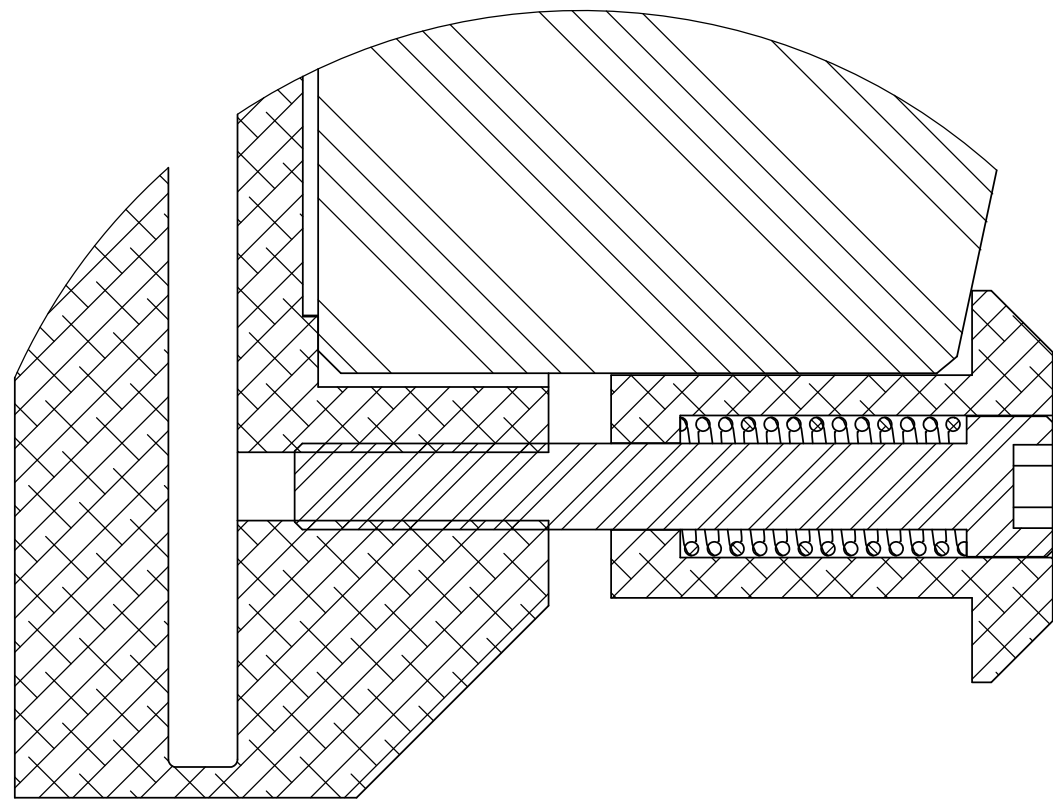
DIMENSIONS ARE IN INCHES		NOTES AND TOLERANCES: (UNLESS OTHERWISE SPECIFIED)		LIGO CALIFORNIA INSTITUTE OF TECHNOLOGY MASSACHUSETTS INSTITUTE OF TECHNOLOGY		PART NAME			
TOLERANCES: .XX ± .01 .XXX ± .005		1. INTERPRET DRAWING PER ASME Y14.5-1994. 2. REMOVE ALL SHARP EDGES, R.02 MIN. 3. DO NOT SCALE FROM DRAWING. 4. ALL MACHINING FLUIDS MUST BE FULLY SYNTHETIC, FULLY WATER SOLUBLE AND FREE OF SULFUR, SILICONE, AND CHLORINE.		SYSTEM LIGO		SUB-SYSTEM AOS		aLIGO TMS FLEXIBLE SEC MIRROR MT. ASSY	
ANGULAR ± 1.0°		MATERIAL N/A		FINISH N/A μinch		NEXT ASSY D1001600		DESIGNER K. MAILAND 08/15/2010	
						DRAFTER M. MILLER 08/17/2010		SIZE DWG. NO. B D1002210	
						CHECKER		REV. v3	
						APPROVAL		SCALE: 1:1 PROJECTION: SHEET 1 OF 3	

D1002210_aLIGO_TMS FLEXIBLE SEC MIRROR MT. ASSY., PART PDM REV: X-177, DRAWING PDM REV: X-027





 CALIFORNIA INSTITUTE OF TECHNOLOGY MASSACHUSETTS INSTITUTE OF TECHNOLOGY		
SIZE	DWG. NO.	REV.
B	D1002210	V3
SCALE: 1:1	PROJECTION:	SHEET 2 OF 3

D1002210_aLIGO_TMS FLEXIBLE SEC MIRROR MT. ASSY., PART PDM REV: X-177, DRAWING PDM REV: X-027



REF:
SCREW HEAD FLUSH WITH CLAMP FACE
COMPRESSIVE FORCE 1 Lb
3 CLAMPS = 3 Lb

DETAIL C
SCALE 4 : 1

 CALIFORNIA INSTITUTE OF TECHNOLOGY MASSACHUSETTS INSTITUTE OF TECHNOLOGY		
SIZE B	DWG. NO. D1002210	REV. V3
SCALE: 8:1	PROJECTION: 	SHEET 3 OF 3

8 7 6 5 4 3 2 1

D
C
B
A

D
C
B
A

8 7 6 5 4 3 2 1