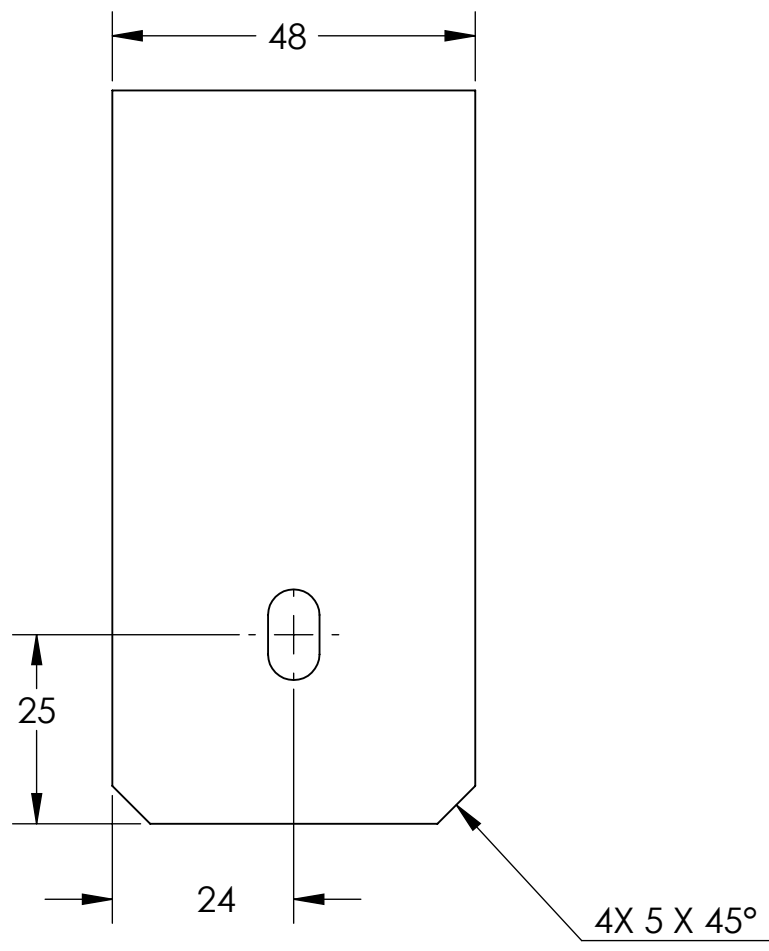
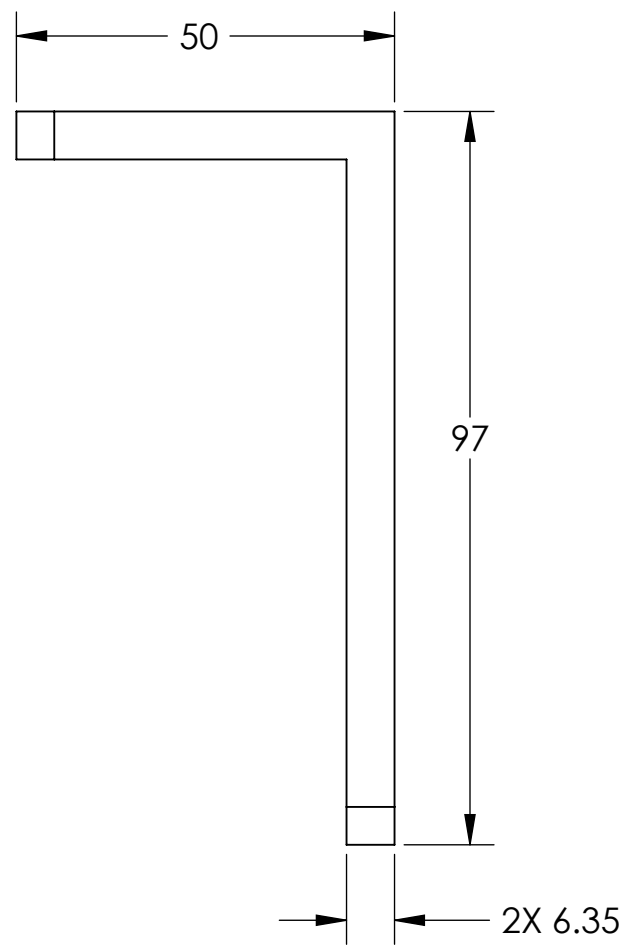


D1002247 qLIGO, SUS, LOWER STRUCTURE STORAGE CONTAINER LSAT CLAMP, PART PDM REV: X-002, DRAWING PDM REV: X-002

NOTES CONTINUED:
 ⑤ SCRIBE, ENGRAVE, OR MECHANICALLY STAMP (NO DYES OR INKS) A UNIQUE THREE DIGIT SERIAL NUMBER & REVISION NUMBER ON EACH PART. SERIAL NUMBERS START AT 001 FOR THE FIRST ARTICLE AND PROCEED CONSECUTIVELY. BAG AND TAG PARTS WITH THEIR DRAWING PART NUMBER, REVISION, VARIANT OR "TYPE" (IF APPLICABLE), AND QUANTITY. IF PARTS ARE TOO SMALL TO SCRIBE, BAGGING AND TAGGING ALONE IS SUFFICIENT.
 EXAMPLE (PART): 001-v1
 EXAMPLE (TAG): DXXXXXX-VY, TYPE-XX, QTY: TBD

REV.	DATE	DCN #	DRAWING TREE #
V1	20 AUG 2010	E1000577	



NOTES AND TOLERANCES: (UNLESS OTHERWISE SPECIFIED)	
DIMENSIONS ARE IN MILLIMETERS	
TOLERANCES: .X ± .25 .XX ± .13 ANGULAR ± .5°	
1. INTERPRET DRAWING PER ASME Y14.5-1994. 2. REMOVE ALL SHARP EDGES, R.02 MIN. 3. DO NOT SCALE FROM DRAWING. 4. ALL MACHINING FLUIDS MUST BE FULLY SYNTHETIC, FULLY WATER SOLUBLE AND FREE OF SULFUR, SILICONE, AND CHLORINE.	
MATERIAL	FINISH
6061-T6 Al	63 μinch

CALIFORNIA INSTITUTE OF TECHNOLOGY MASSACHUSETTS INSTITUTE OF TECHNOLOGY		PART NAME	
ADVANCED LIGO		LOWER STRUCTURE STORAGE CONTAINER LSAT CLAMP	
SYSTEM	SUB-SYSTEM	DESIGNER	DATE
ADVANCED LIGO	SUS	K. BUCKLAND	20 AUG 2010
CHECKER	APPROVAL	DRAFTER	DATE
		K. BUCKLAND	20 AUG 2010
NEXT ASSY		SIZE	DWG. NO.
D1002118		B	D1002247
		SCALE	PROJECTION
		1:1	SHEET 1 OF 1

8 7 6 5 4 3 2 1

D C B A

D C B A

8 7 6 5 4 3 2 1