

4

3

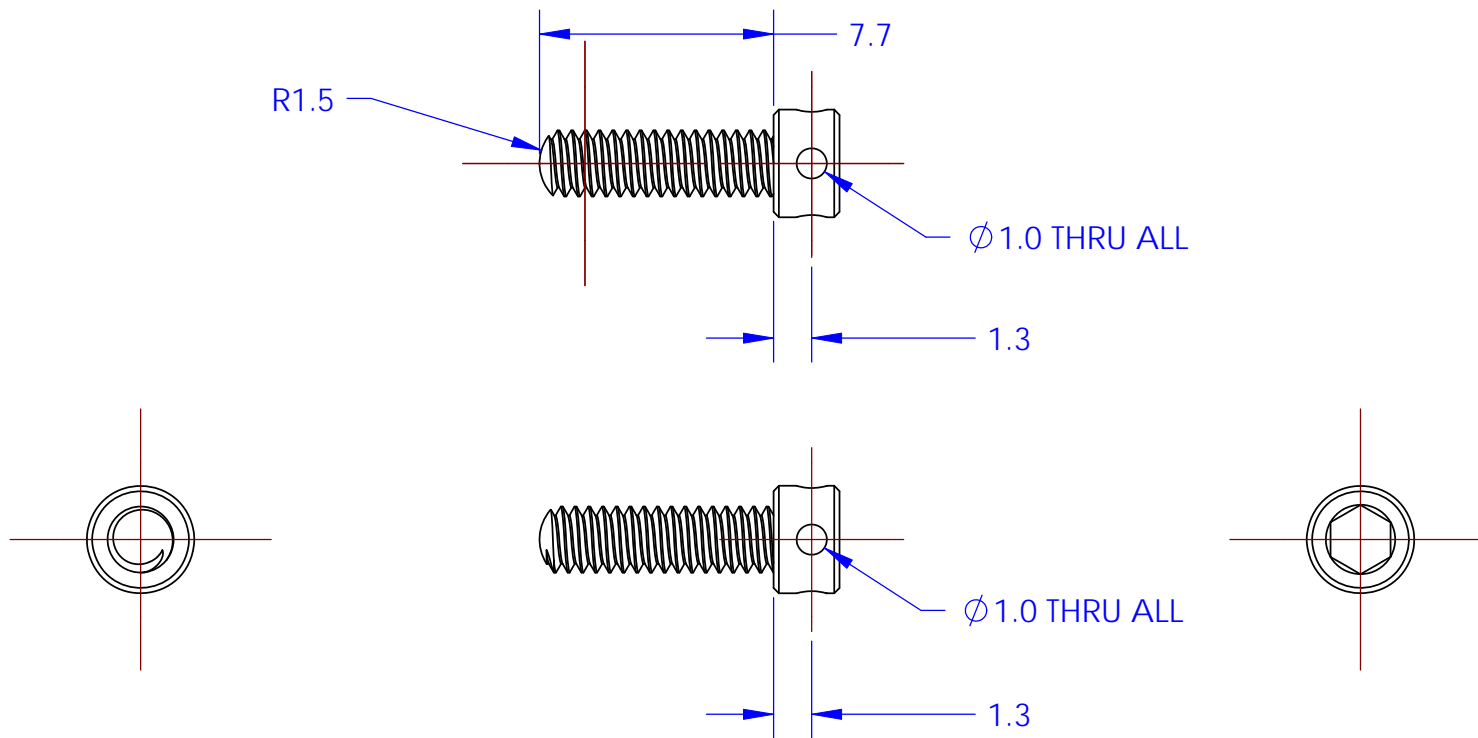
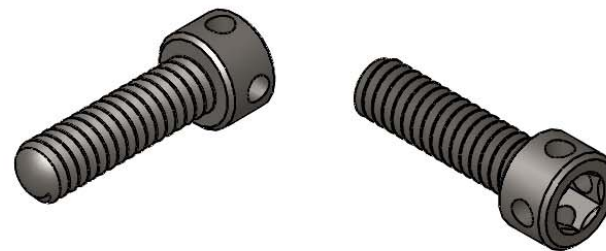
2

1

NOTES CONTINUED:

- ⑤ PART MADE FROM #2-56 x 5/16" STAINLESS STEEL SOCKET HEAD CAP SCREW (e.g. McMASTER-CARR 92185A078)
- MODIFICATIONS:
- 1) ROUND THE TIP OF THE SCREW TO A R 1.5 mm SPHERE
- 2) DRILL 2x \varnothing 1 mm HOLES(ORTHOOGONAL TO EACH OTHER) THROUGH THE HEAD

REV.	DATE	DCN #	DRAWING TREE #
v1	21/10/2010	-	-
-	-	-	-
-	-	-	-



NOTES AND TOLERANCES: (UNLESS OTHERWISE SPECIFIED)

DIMENSIONS ARE IN mm

TOLERANCES:

X \pm 0.1
XX \pm 0.01

ANGULAR \pm 0.2°

- 1. INTERPRET DRAWING PER ASME Y14.5-1994.
- 2. REMOVE ALL SHARP EDGES, R.5 MIN.
- 3. DO NOT SCALE FROM DRAWING.
- 4. ALL MACHINING FLUIDS MUST BE FULLY SYNTHETIC, FULLY WATER SOLUBLE AND FREE OF SULFUR, SILICONE, AND CHLORINE.

MATERIAL
300 series Stainless Steel

FINISH
1.6 μ m



SYSTEM
aLIGO

SUB-SYSTEM
SUS

NEXT ASSY
D1002145

PART NAME
aLIGO TCP/ERM prism holder fixing screw

DESIGNER M.v.Veggel 26/08/2010
 DRAFTER M.v.Veggel 26/08/2010
 CHECKER R.Jones 14/10/2010
 APPROVAL

SIZE DWG. NO.
A D1002291

REV.
v1

SCALE: 4:1 PROJECTION: SHEET 1 OF 1

4

3

2

1