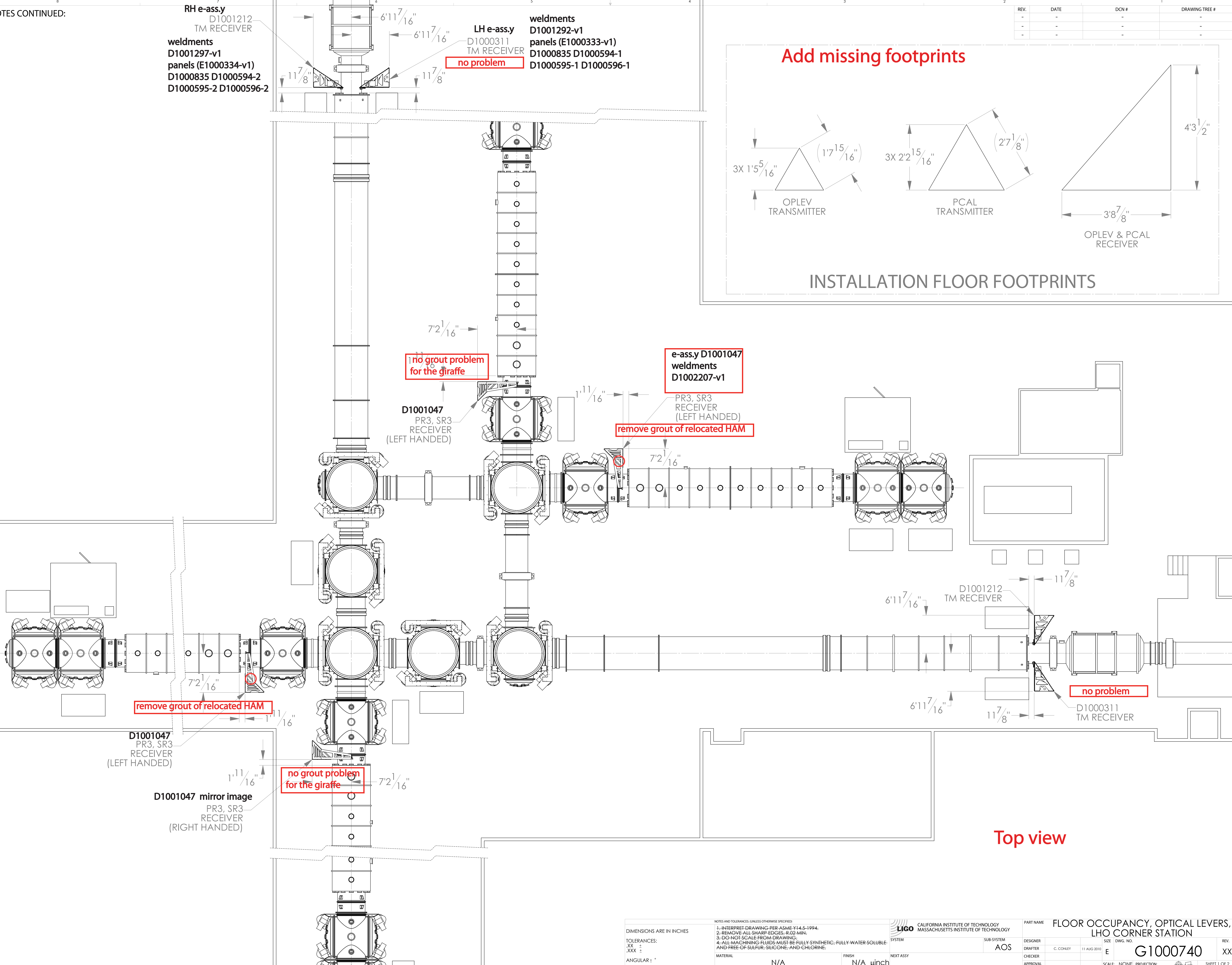
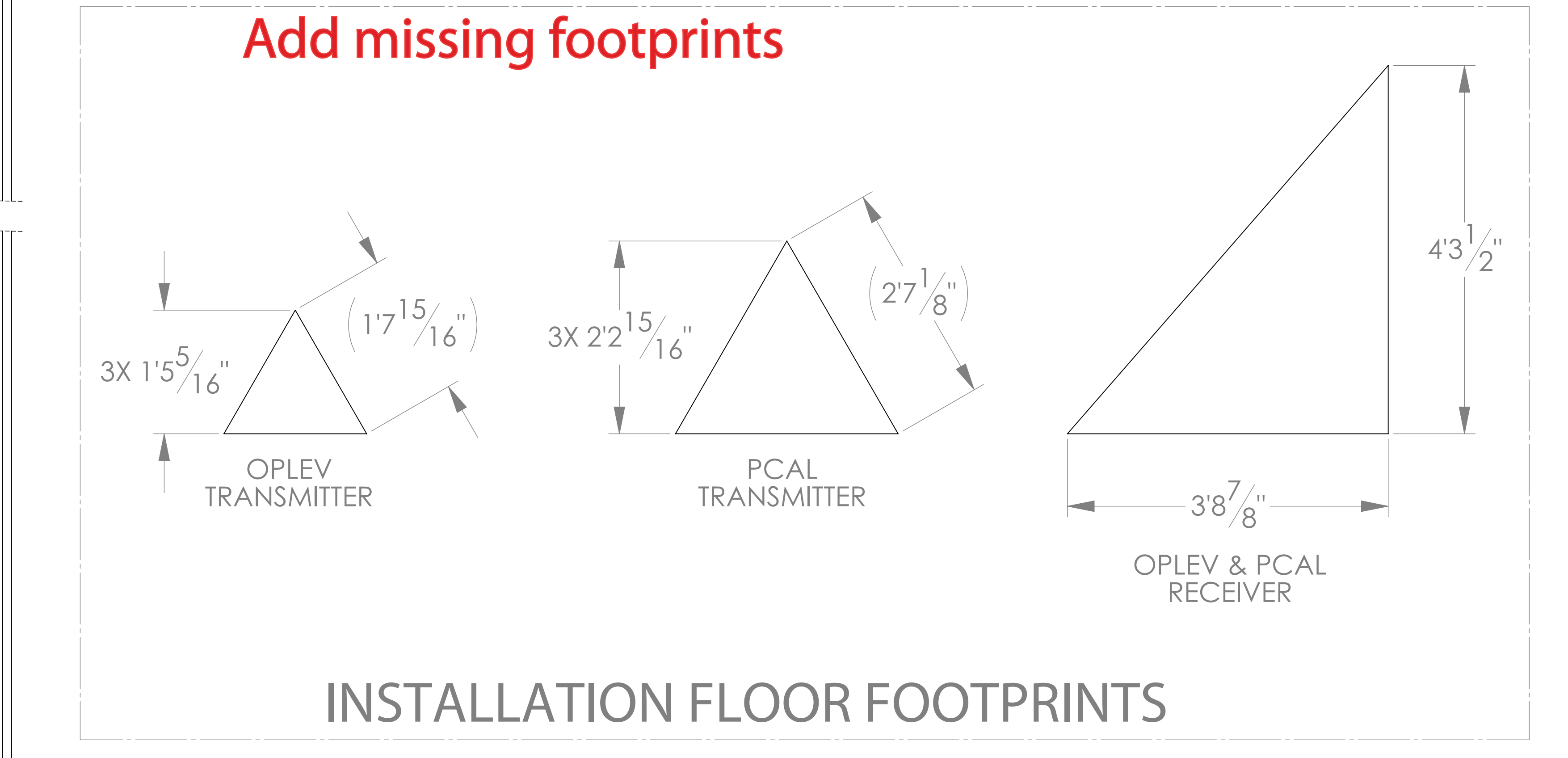


NOTES CONTINUED:

RH e-assy  
D1001212  
TM RECEIVER  
weldments  
D1001297-v1  
panels (E1000334-v1)  
D1000835 D1000594-2  
D1000595-2 D1000596-2

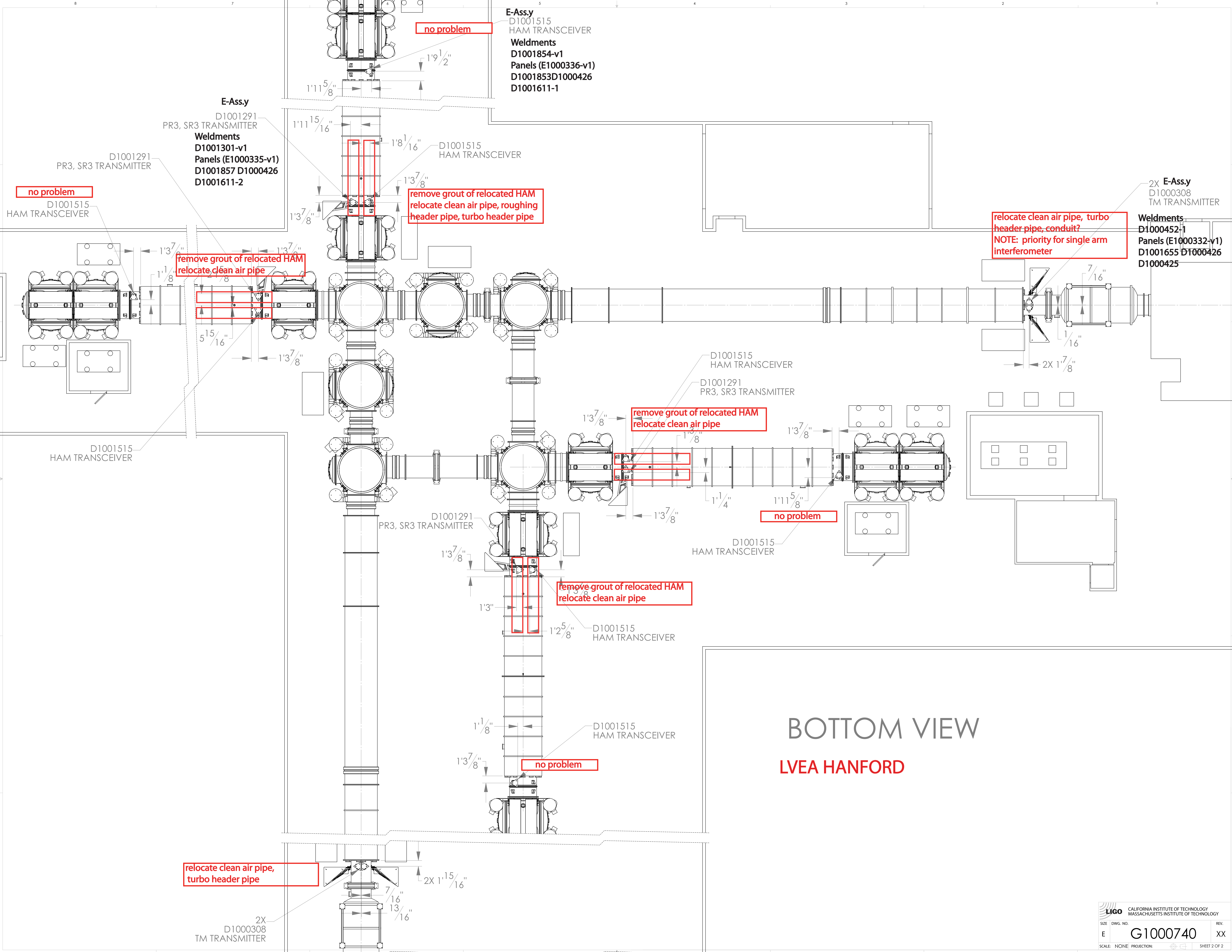
LH e-assy  
D1000311  
TM RECEIVER  
no problem  
weldments  
D1001292-v1  
panels (E1000333-v1)  
D1000835 D1000594-1  
D1000595-1 D1000596-1

REV.	DATE	DCN #	DRAWING TREE #
-	-	-	-
-	-	-	-
-	-	-	-



DIMENSIONS ARE IN INCHES		NOTES AND TOLERANCES (UNLESS OTHERWISE SPECIFIED):		LIGO CALIFORNIA INSTITUTE OF TECHNOLOGY MASSACHUSETTS INSTITUTE OF TECHNOLOGY		PART NAME FLOOR OCCUPANCY, OPTICAL LEVERS, LHO CORNER STATION	
TOLERANCES:	.XX ±	1. INTERPRET DRAWING PER ASME Y14.5-1994.	2. REMOVE ALL SHARP EDGES, R.02 MIN.	3. DO NOT SCALE FROM DRAWING.	4. ALL MACHINING FLUIDS MUST BE FULLY SYNTHETIC, FULLY WATER SOLUBLE, AND FREE OF SULFUR, SILICONE, AND CHLORINE.	DESIGNER	SIZE DWG. NO.
ANGULAR ± °		MATERIAL	N/A	FINISH	N/A μinch	DRAFTER	G1000740
						CHECKER	XX
						APPROVAL	SCALE: NONE; PROJECTION:

G1000740 Floor Occupancy, Optical Levers, LHO Corner Station, Part Rev. 0.0.0, 11 AUG 2010, REV. 0.0.0



**BOTTOM VIEW**  
**LVEA HANFORD**