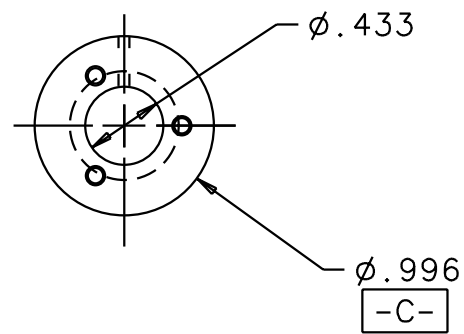
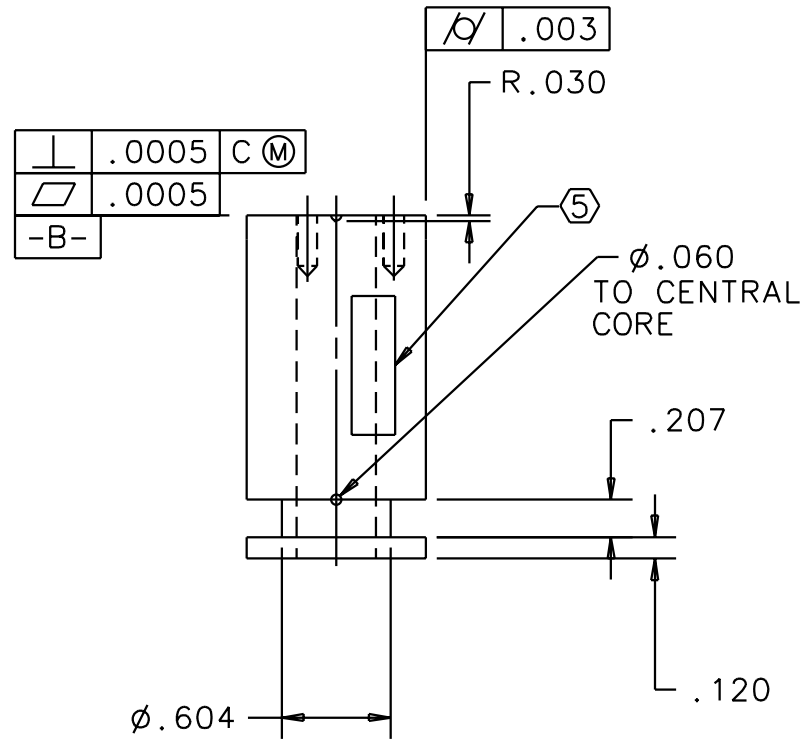
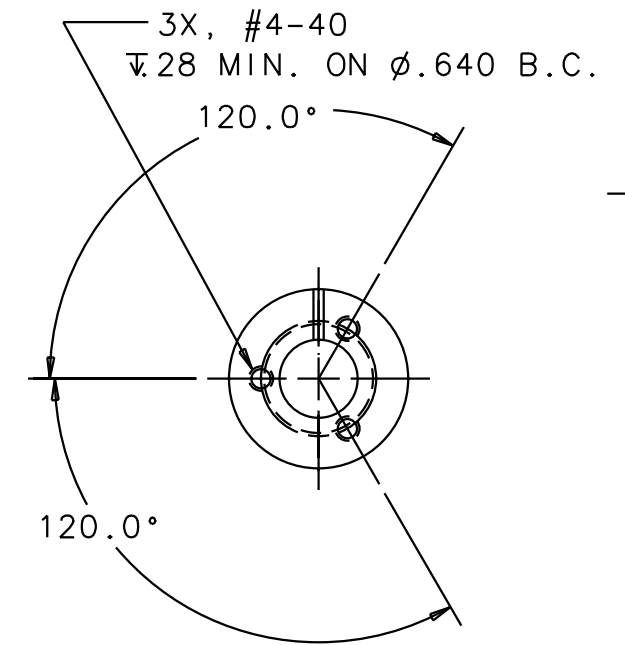
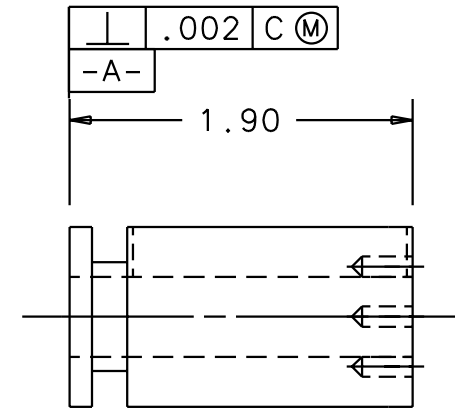


NOTES: (UNLESS OTHERWISE SPECIFIED)

1. FILLETS: R .02/.01 ON ALL EDGES AND HOLES.
 2. MATERIAL: ALUMINA
 3. SURFACE FINISH: 16/ OR BETTER ON ALL OUTSIDE SURFACES. ID NEED NOT BE POLISHED.
 4. COAT ENTIRE HEAD WITH A THIN LAYER OF CONDUCTIVE MATERIAL TO PROVIDE UNIFORM RESISTIVITY OF .25 TO 1,000,000 OHMS/SQUARE.
- (5) LASER MARK THE DRAWING PART NUMBER ON NOTED SURFACE OF PART FOLLOWED BY "S/N" THEN A THREE DIGIT SERIAL NUMBER. SERIAL NUMBERS TO START AT 001 FOR FIRST PART AND PROCEED IN A CONSECUTIVE MANNER TO A MAXIMUM OF 999, FOR EACH SUCCEEDING PART PRODUCED. USE 0.07 HIGH CHARACTERS.
EXAMPLE: D000065-D S/N001



REV	DATE	DRAWN BY	CHECKED	DCC	DCN/DESCRIPTION
A	5/9/00	J. Romie			E000240/INITIAL RELEASE
B	5/26/00	J. Romie			E000264/ADD TOLERANCES
C	9/7/00	J. Romie			E000420/COMPLETE REDESIGN
D	12/5/00	J. Romie			E000545/CHANGE NOTES 3&5



QTY REQD	PART OR IDENTIFYING NO	NOMENCLATURE OR DESCRIPTION	MATERIAL SPECIFICATION	ITEM NO
PARTS LIST				
UNLESS OTHERWISE SPECIFIED DIMENSIONS ARE IN INCHES TOLERANCES ARE: DECIMALS ANGLES		APPROVALS	DATE	LIGO CALIFORNIA INSTITUTE OF TECHNOLOGY MASSACHUSETTS INSTITUTE OF TECHNOLOGY
0.XX-±0.01 0.XXX-±0.005 ANGLES-±0.5°		DRAWN J. ROMIE CHECKED	2/00	
MATERIAL ALUMINA		TITLE SENSOR/ACTUATOR HEAD, LONG, SMD, ALUMINA		SIZE B DWG NO. D000065 REV D
FINISH SEE NOTES		SCALE		
FILENAME /home/dcc/docs/D000065.pdf		SHEET 1 OF 1		