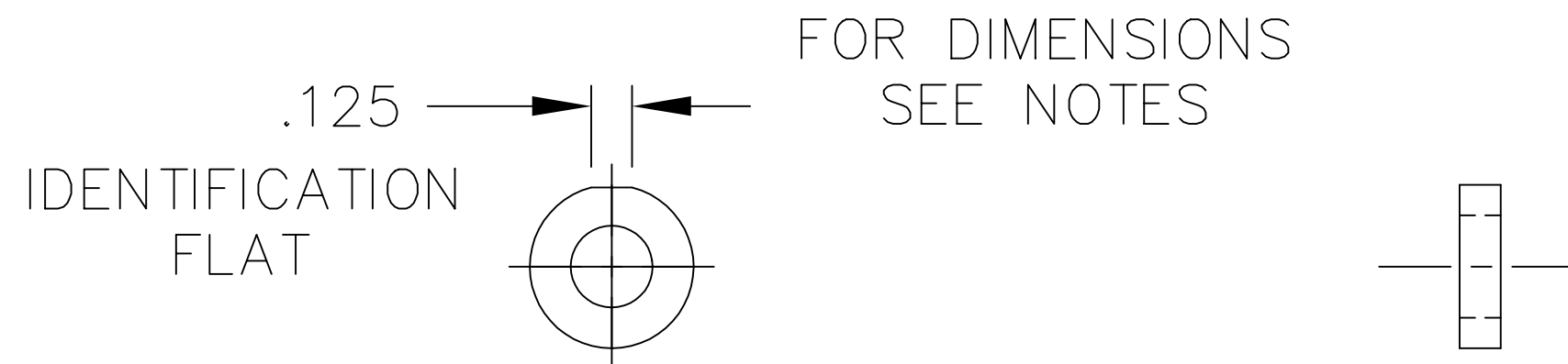


NOTES: (UNLESS OTHERWISE SPECIFIED)

WASHERS IN SETS OF 3
IDENTICAL IN THICKNESS
+/- .0008

2 SETS OF 3 REQUIRED PER
ASSEMBLY



WASHER DESCRIPTION
MC#90945A761 _Stainless Steel
NAS620C flat Washer 1/4"
Screw Size, Dash No. C416,
.255"ID, .468"OD X .06 Thick.

| | | | | | | | | | | | | | | |
|---|--------------------|---|--|-------------------|-------------|------------|---|--------|-------|---|--------------------------------|----------------|-----------|-----------------------|
| UNLESS OTHERWISE SPECIFIED DIMENSIONS ARE IN INCHES | | | | | | | | | | LIGO CALIFORNIA INSTITUTE OF TECHNOLOGY MASSACHUSETTS INSTITUTE OF TECHNOLOGY | | | | |
| TOLERANCES: FRACTIONAL ± 1/16 ANGULAR ± .25° ANGULAR MACH ± BEND ± TWO PLACE DECIMAL ± .01 | | THREE PLACE DECIMAL ± .005 FINISHED SURFACE RMS 63 BREAK CORNERS IN: .015 OUT: .015 REMOVE ALL BURRS | | | | | | | | | PRECISION SPACER, WASHER | | | |
| MATERIAL: 6061 ALUMINUM | HEAT TREAT: T-6 | FINISH: | | A | NEW-RELEASE | | | | | KENM | 3-7-00 | | | |
| | | | | 00 | PRE-RELEASE | - | - | - | - | KENM | 3-7-00 | | | |
| | | | | REV | DESCRIPTION | DCN NUMBER | - | APPR'D | CHECK | DRWN | DATE | | | |
| USED ON: | | NEXT ASS'Y: | | ISSUE DESCRIPTION | | | | | | | CAD FILE D000079-A | SCALE 1 : 1 | SIZE A | DWG. NO. D000079-A |
| | | | | | | | | | | | SHEET 1 OF 1 | | | |