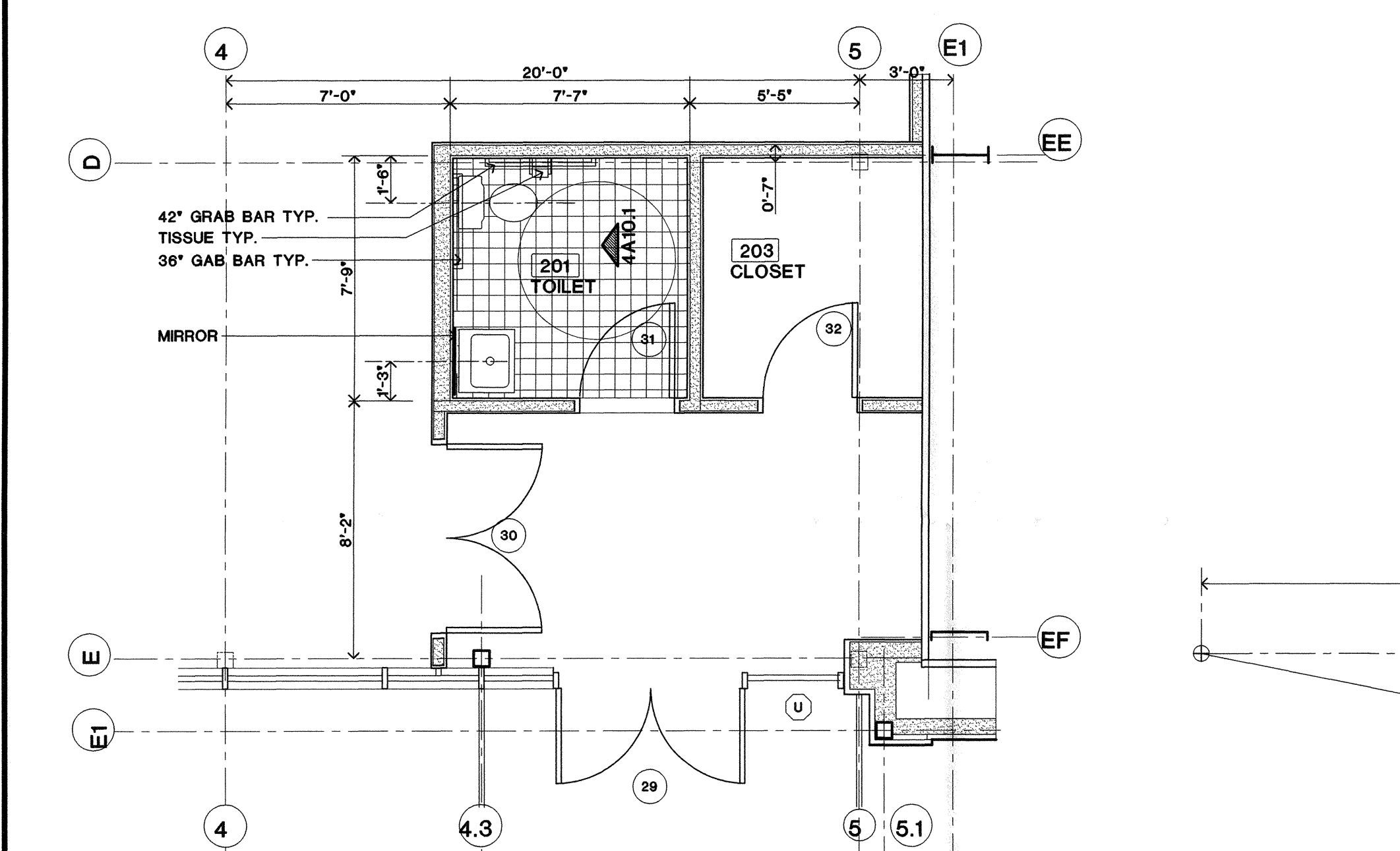
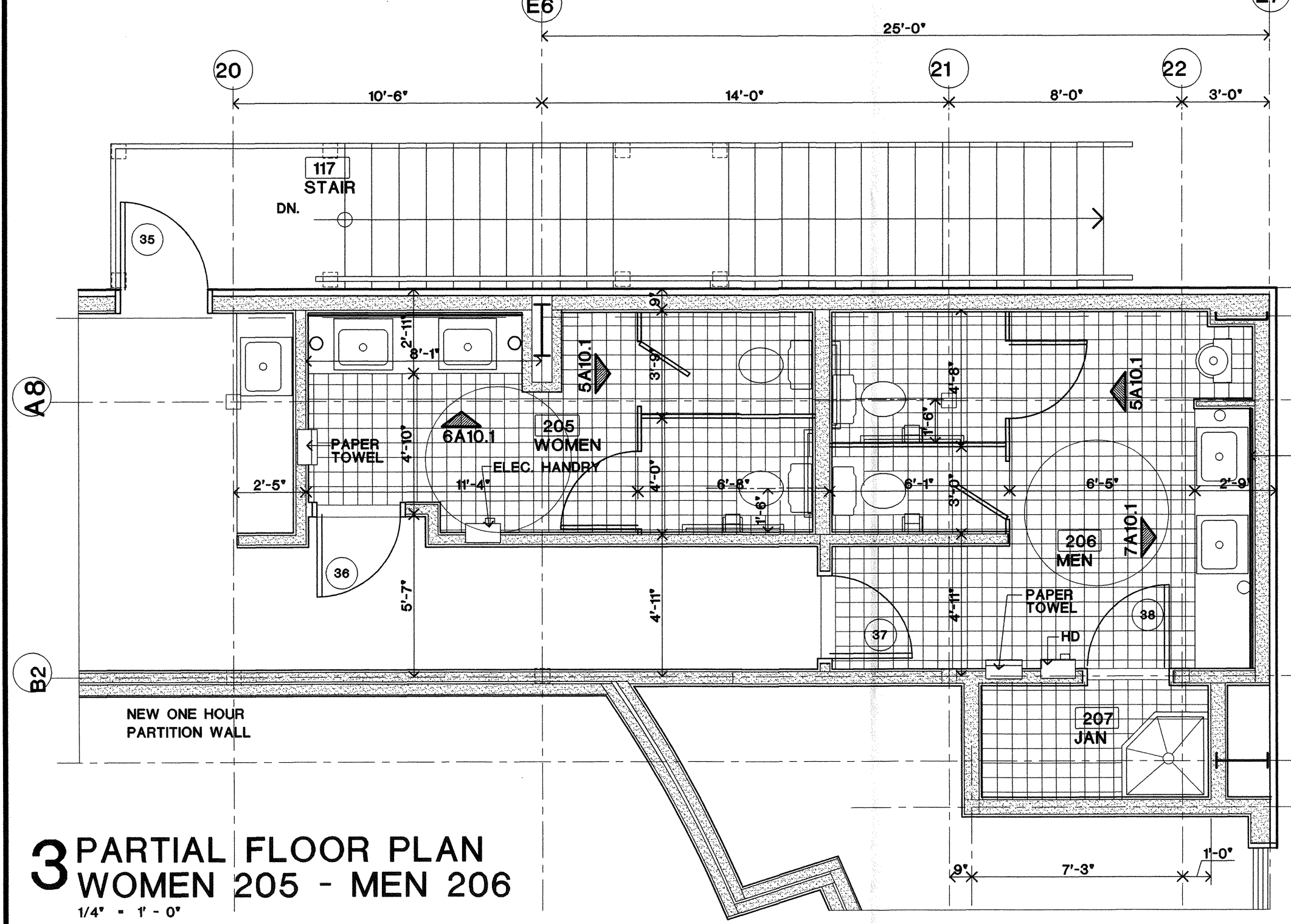


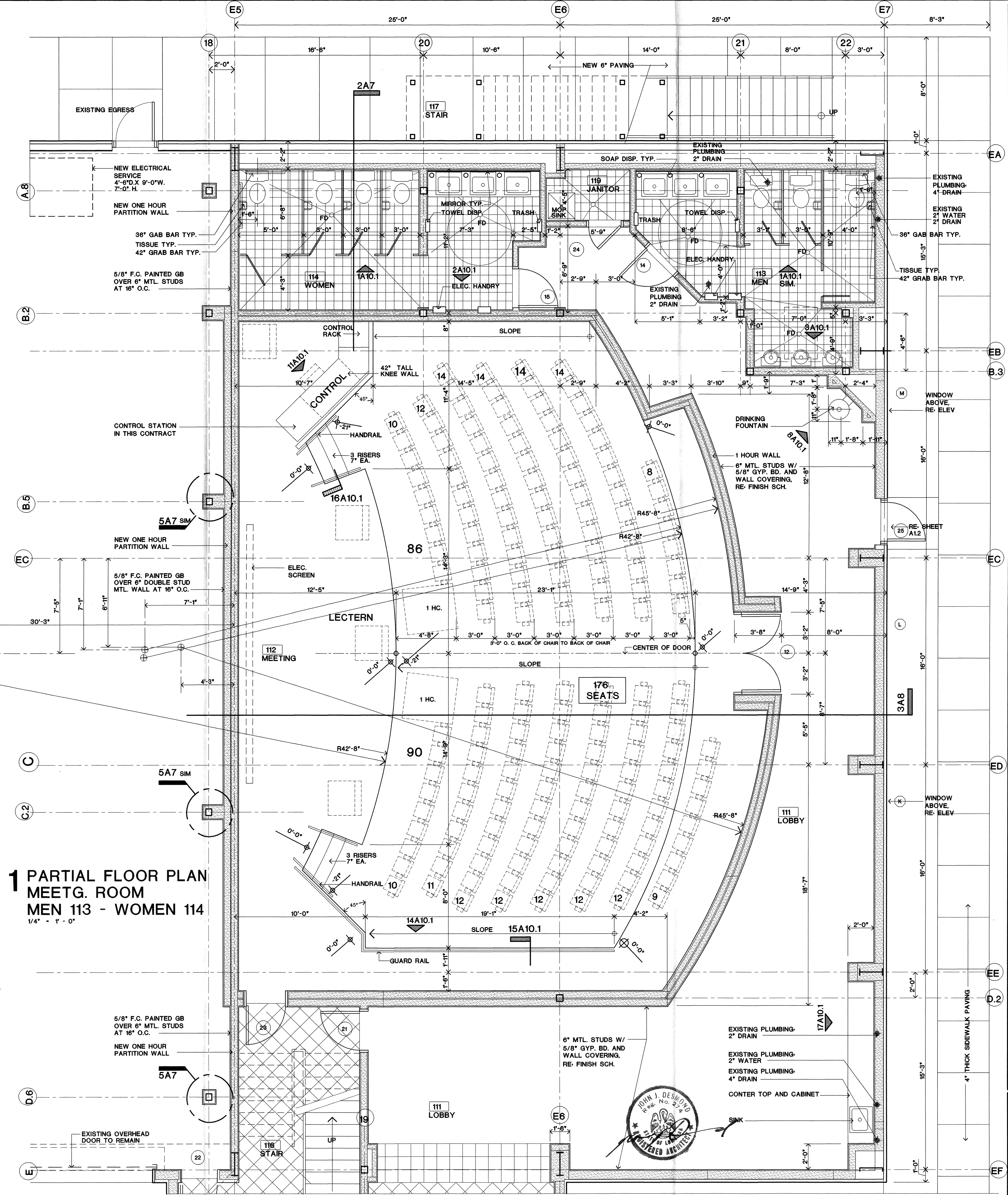
**2 PARTIAL FLOOR PLAN
TOILET 101**
1/4" = 1' - 0"



**4 PARTIAL FLOOR PLAN
TOILET 201**
1/4" = 1' - 0"



**3 PARTIAL FLOOR PLAN
WOMEN 205 - MEN 206**
1/4" = 1' - 0"



**1 PARTIAL FLOOR PLAN
MEETG. ROOM
MEN 113 - WOMEN 114**
1/4" = 1' - 0"

ARCHITECTS/PLANNERS

703 LAUREL ST. BATON ROUGE, LA. 70802
MEMBER AMERICAN INSTITUTE OF ARCHITECTS

JOHN DESMOND & ASSOCIATES

PARTIAL FLOOR PLANS
NEW STAGING BUILDING FOR
LIGO
LIVINGSTON, LOUISIANA

LIGO-D000282-00-L

DATE 9-11-2000
SHEET

A10

OF