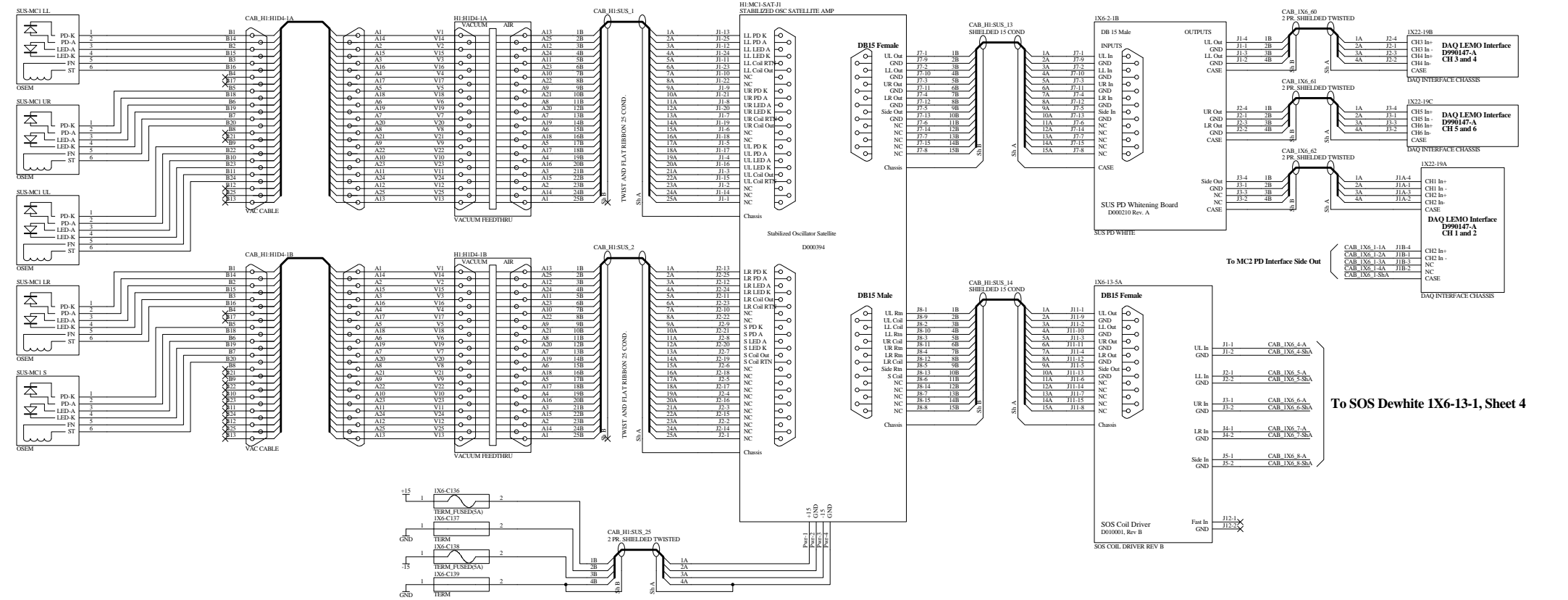
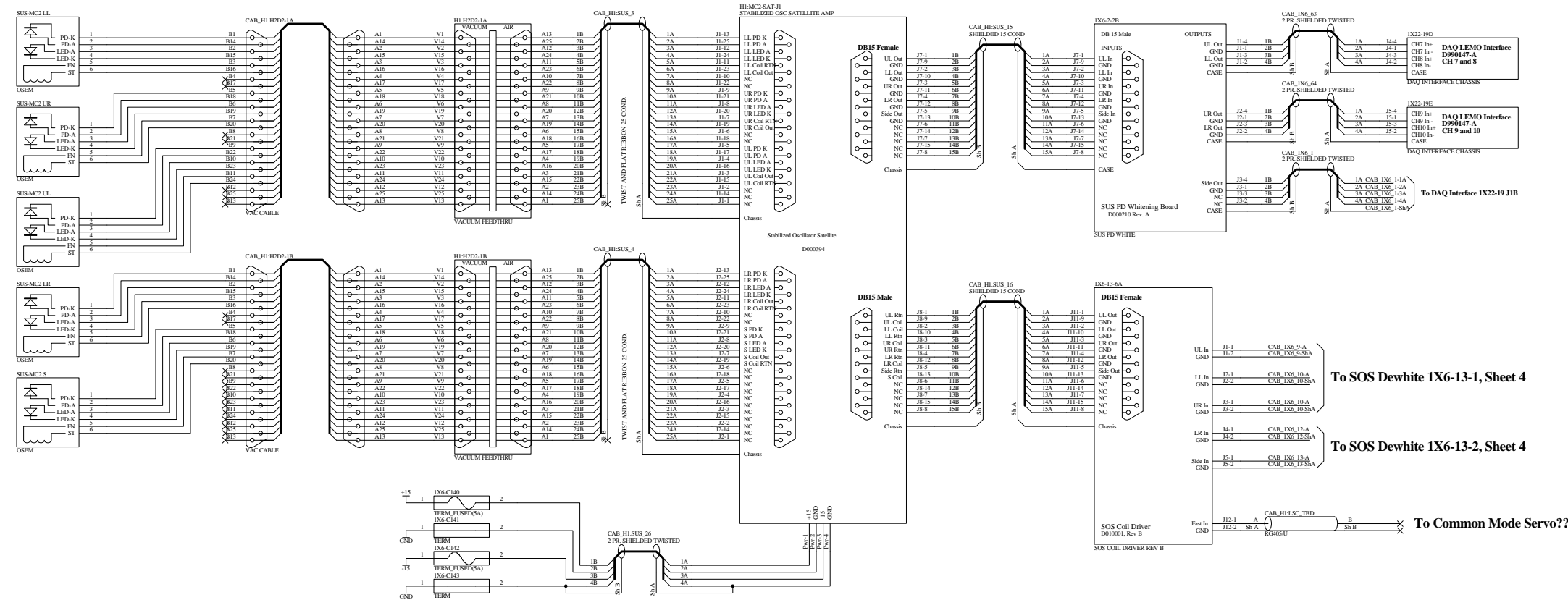


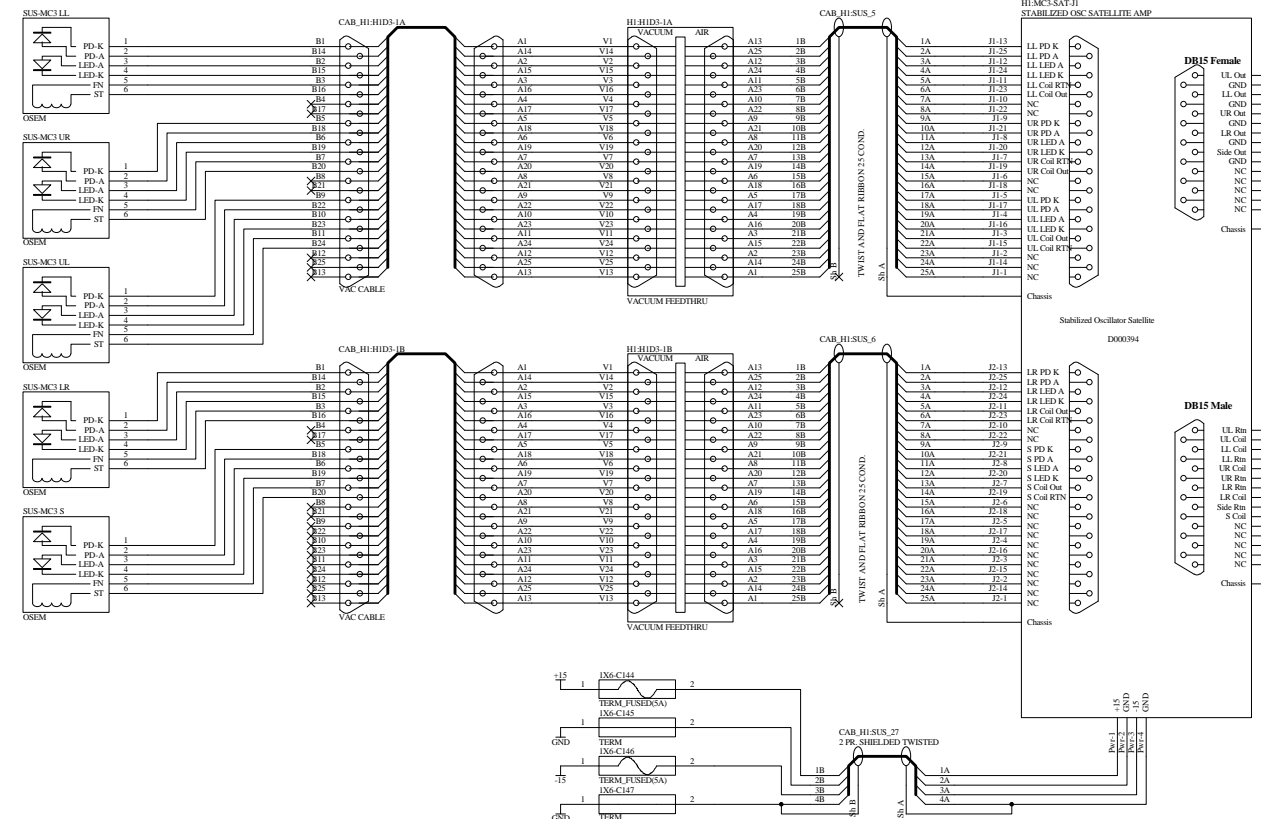
MC1



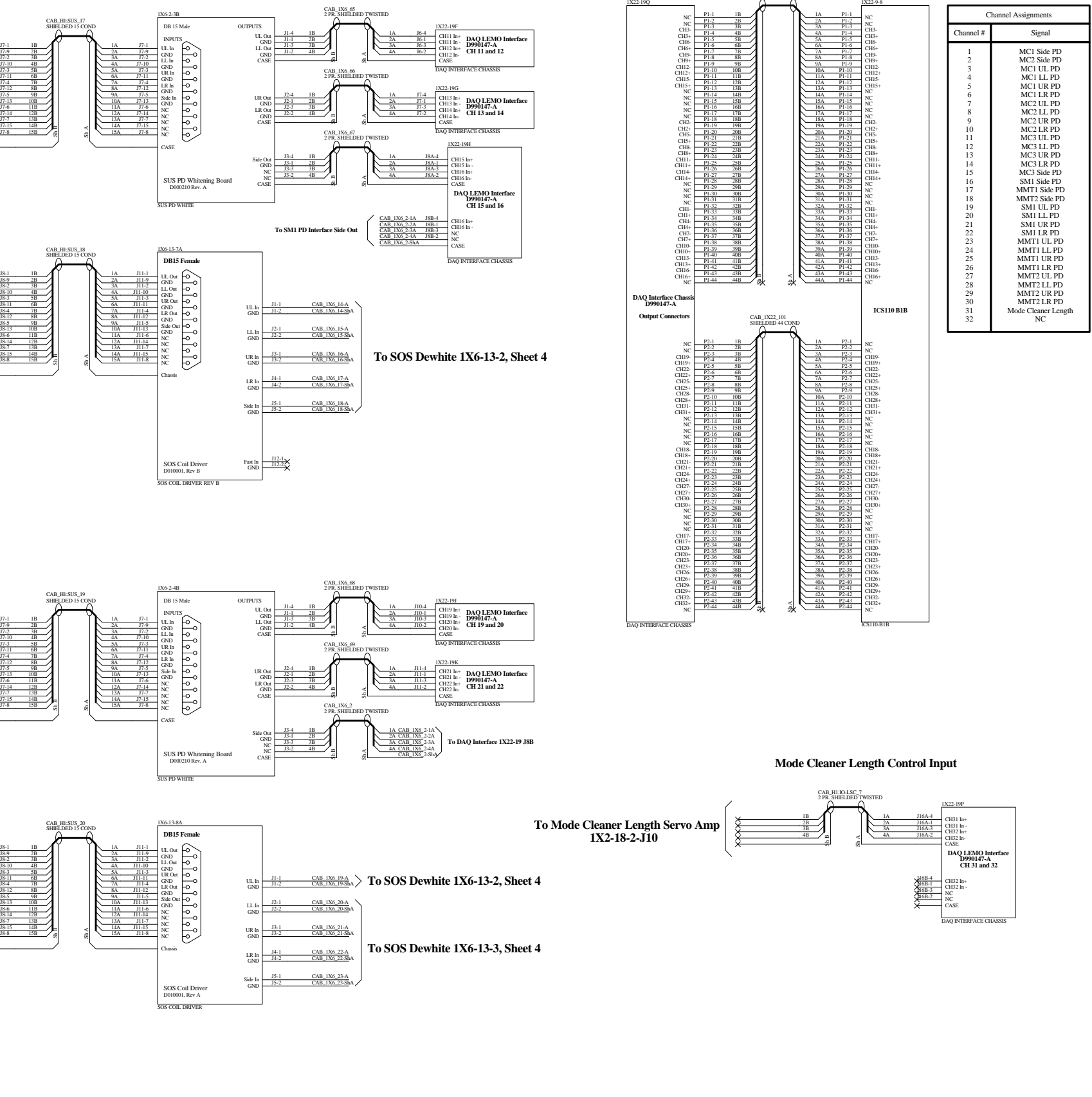
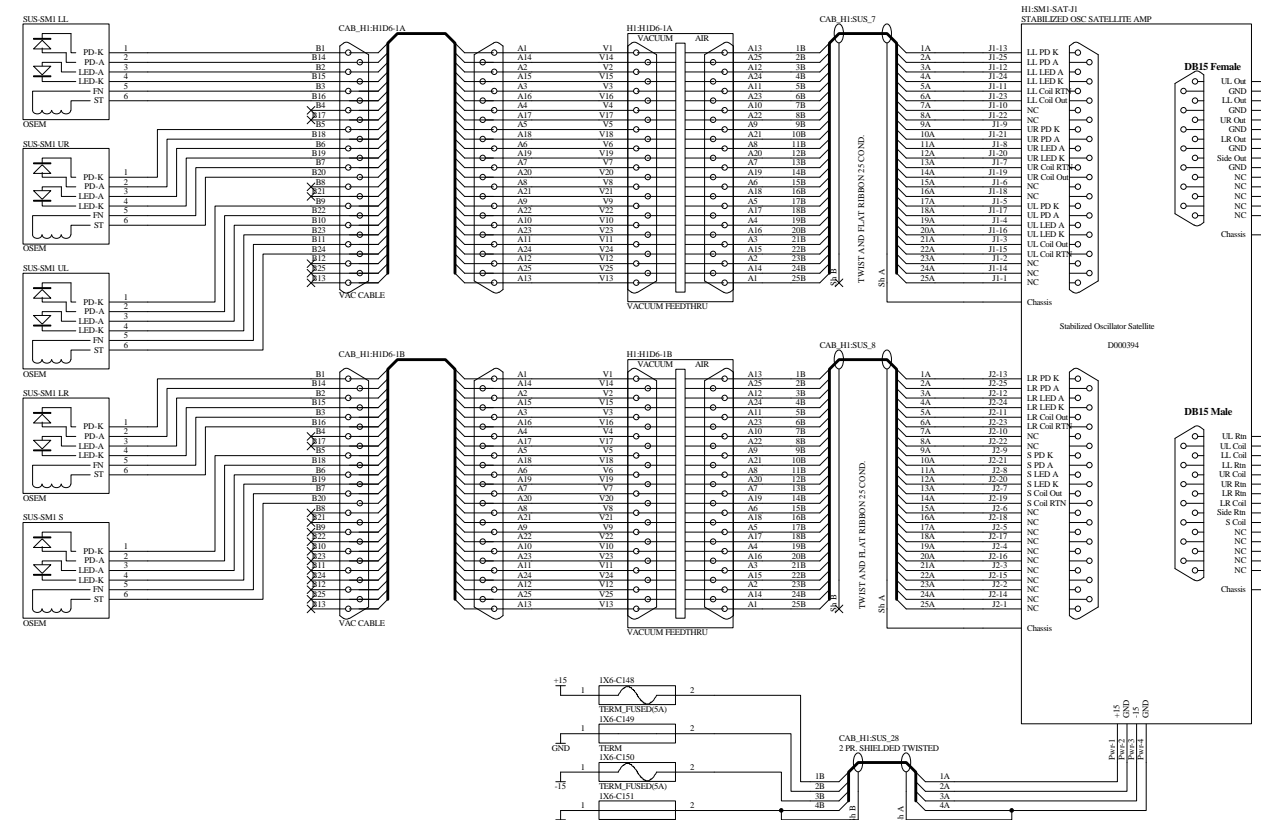
MC2



MC3



SM1



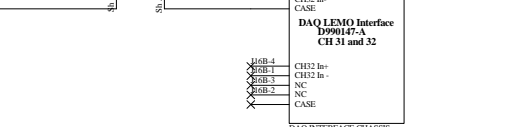
Channel Assignments	
Channel #	Signal
1	MC1 Side PD
2	MC2 Side PD
3	MC1 UL PD
4	MC1 LR PD
5	MC1 UR PD
6	MC2 UL PD
7	MC2 LR PD
8	MC2 UR PD
9	MC2 LR PD
10	MC2 LR PD
11	MC3 UL PD
12	MC3 LR PD
13	MC3 UR PD
14	MC3 LR PD
15	MC3 Side PD
16	MM1 Side PD
17	MMT1 Side PD
18	SM1 UL PD
19	SM1 LR PD
20	SM1 LR PD
21	SM1 UR PD
22	SM1 LR PD
23	MMT1 UL PD
24	MMT1 LR PD
25	MMT2 LR PD
26	MMT2 LR PD
27	MMT2 LR PD
28	MMT2 LR PD
29	MMT2 LR PD
30	MMT2 LR PD
31	Mode Cleaner Length
32	NC

Mode Cleaner Length Control Input

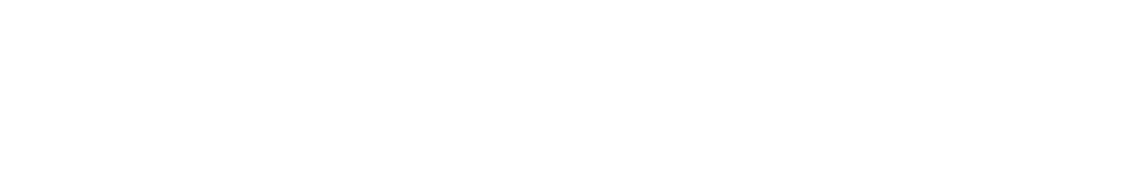
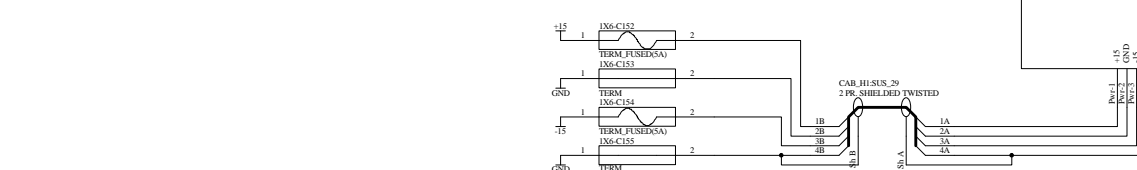
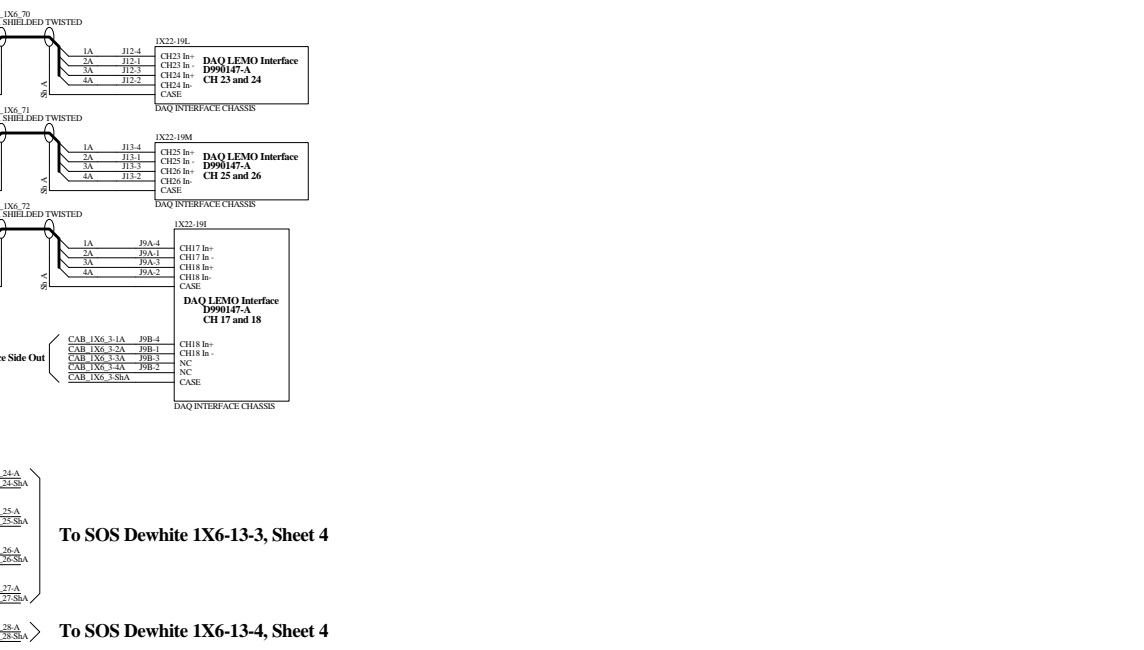
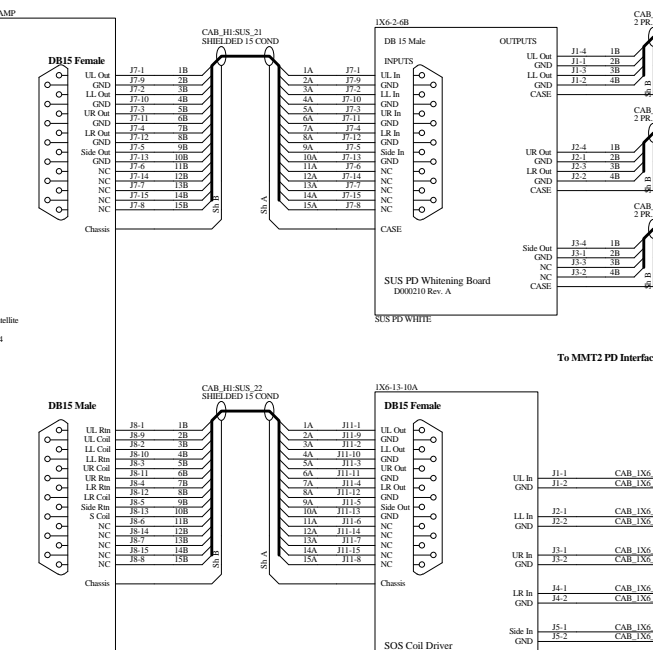
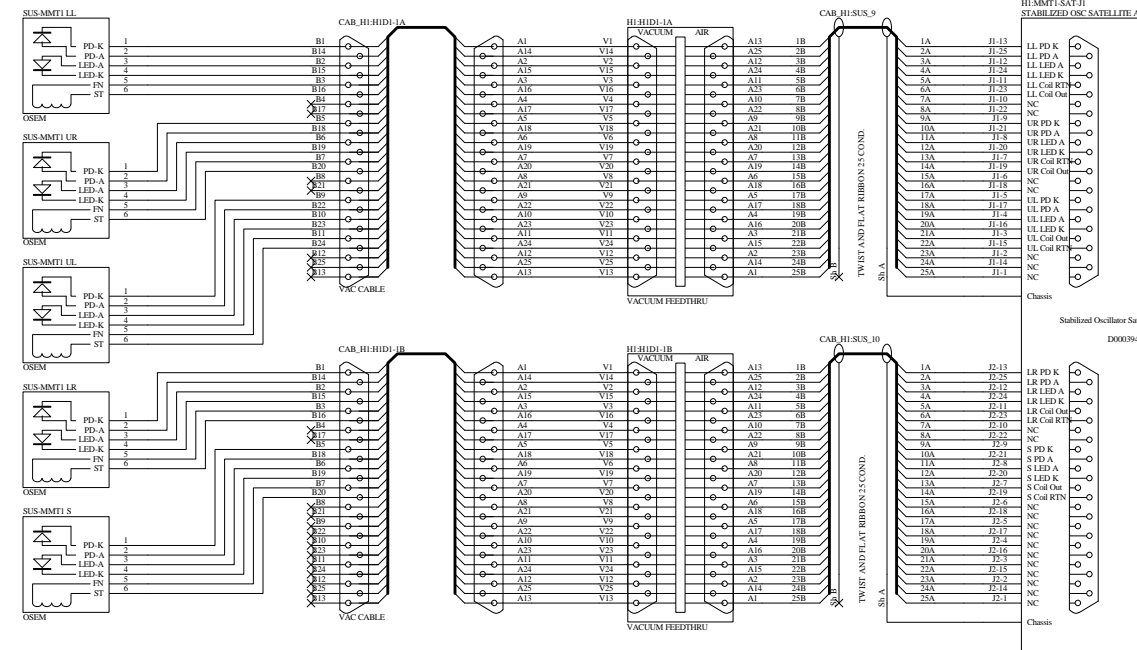
To Mode Cleaner Length Servo Amp IX2-18-2-J10

To SOS Dewhite IX6-13-2, Sheet 4

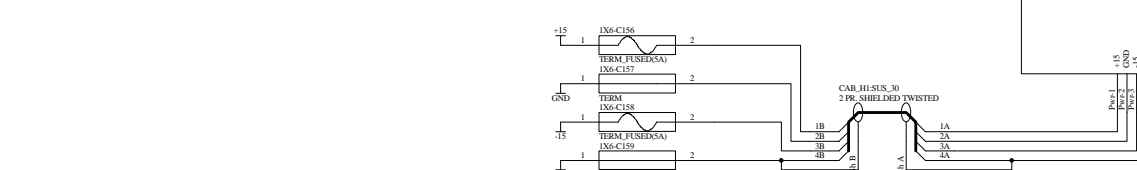
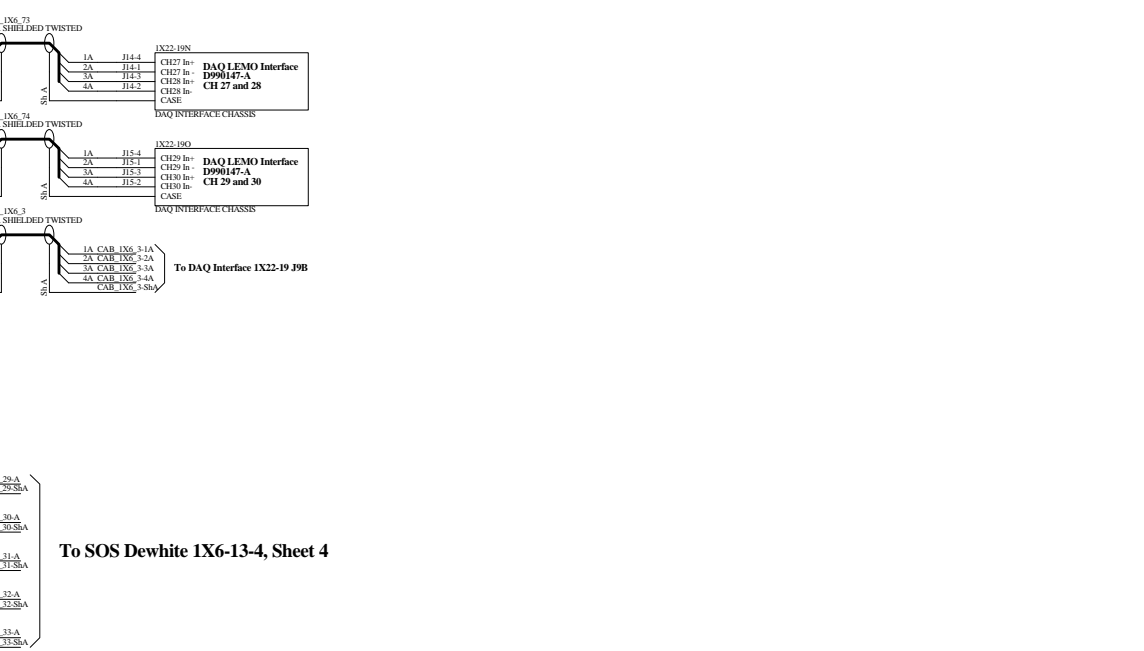
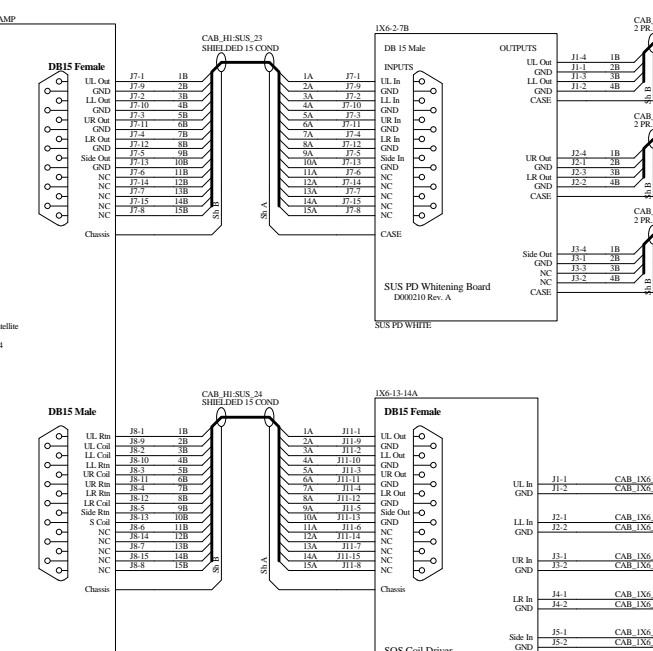
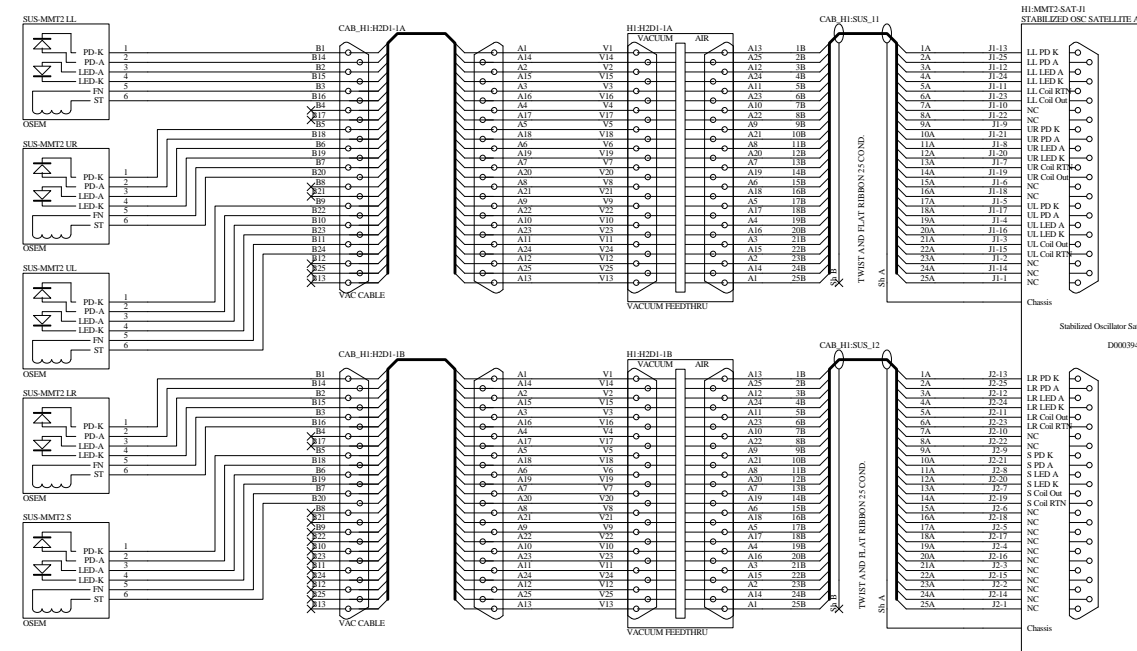
To SOS Dewhite IX6-13-2, Sheet 4

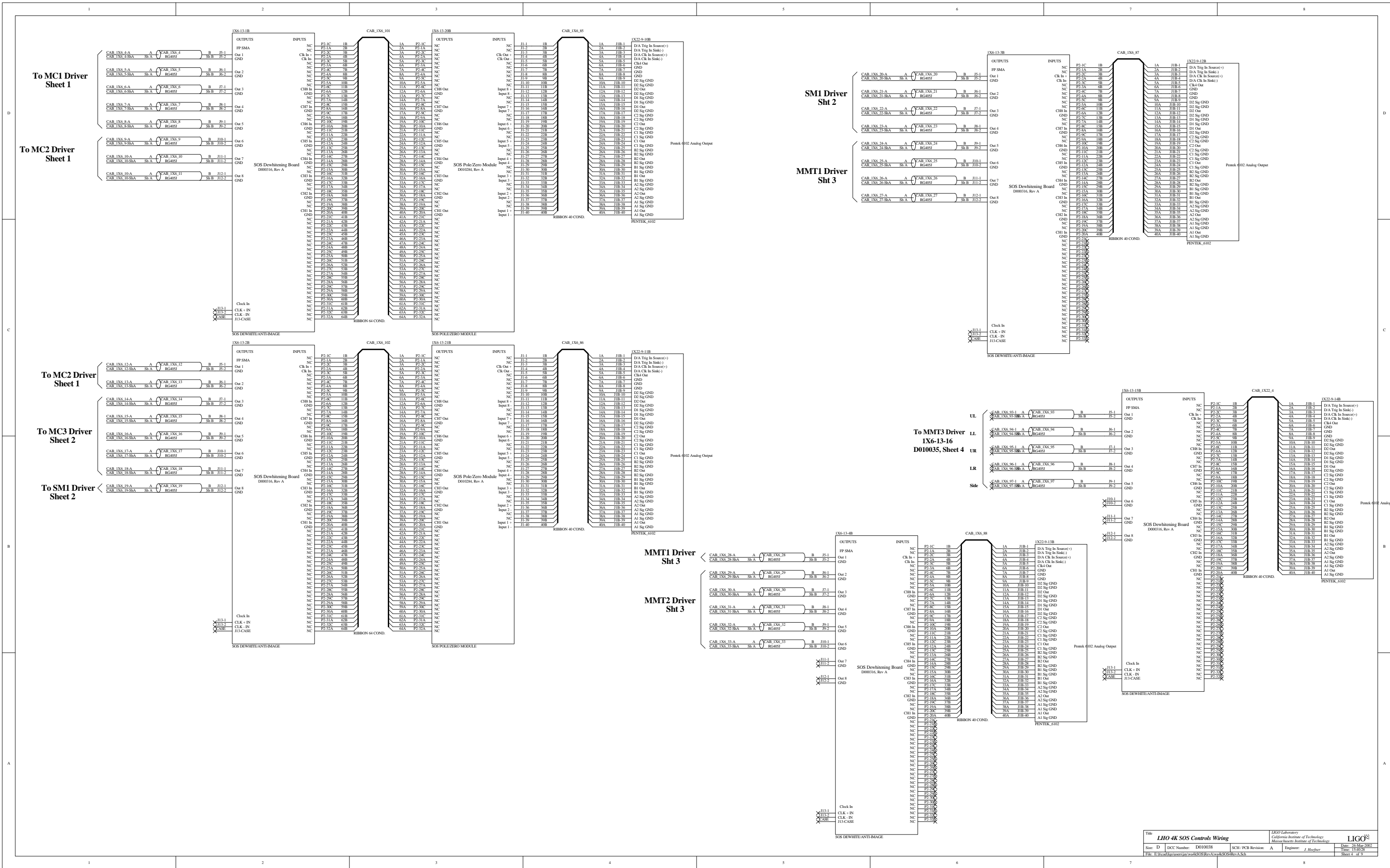


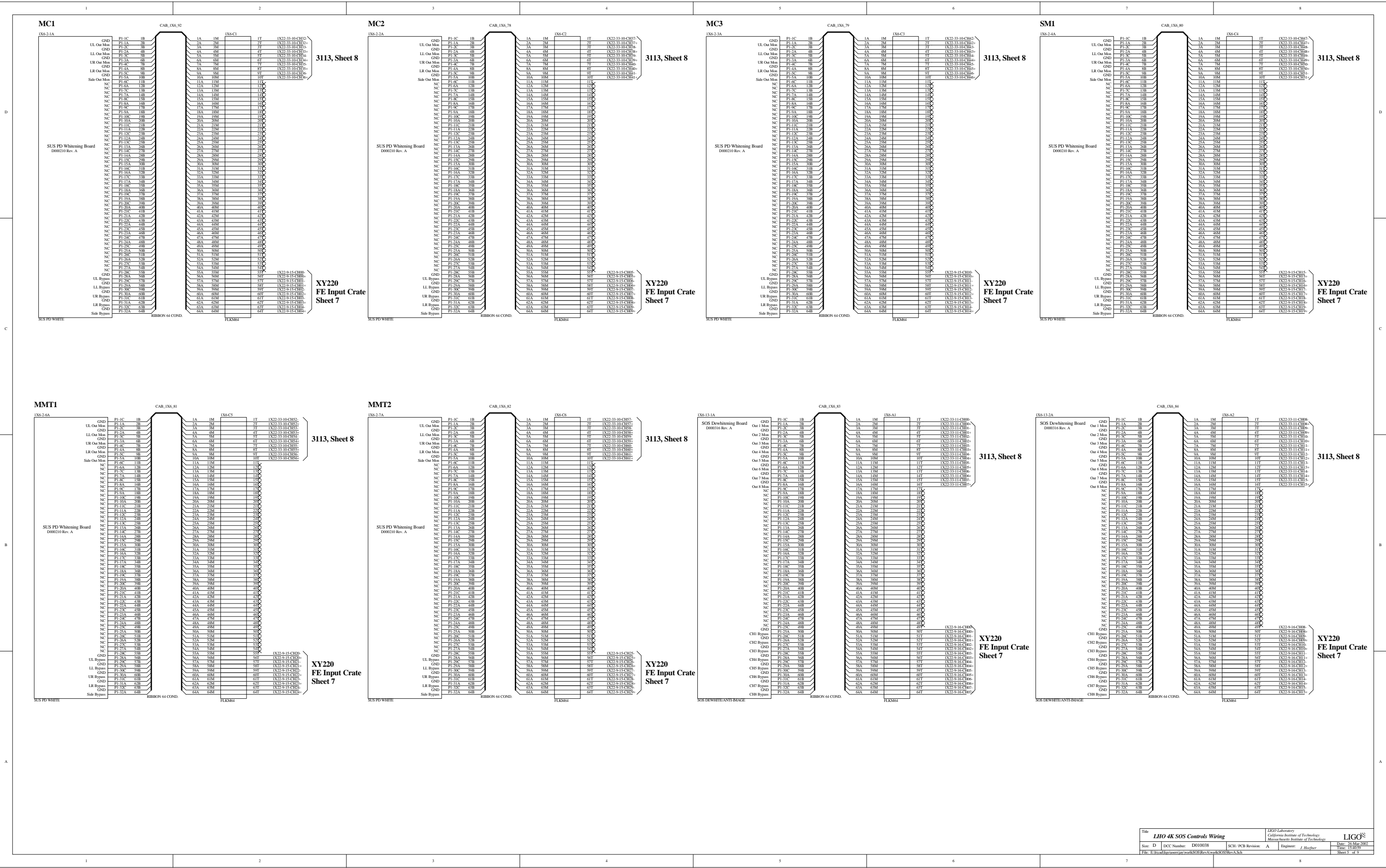
MMT1

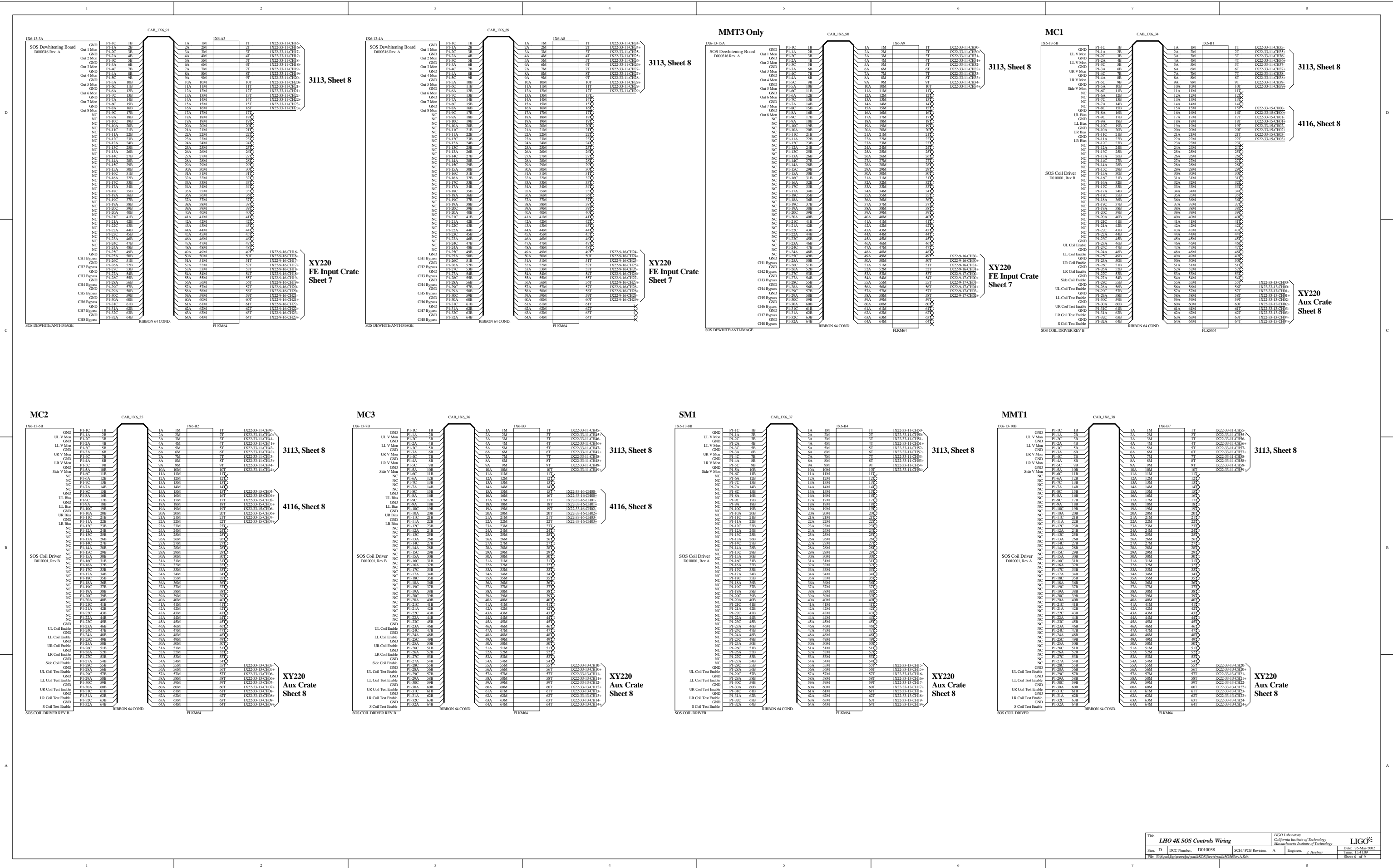


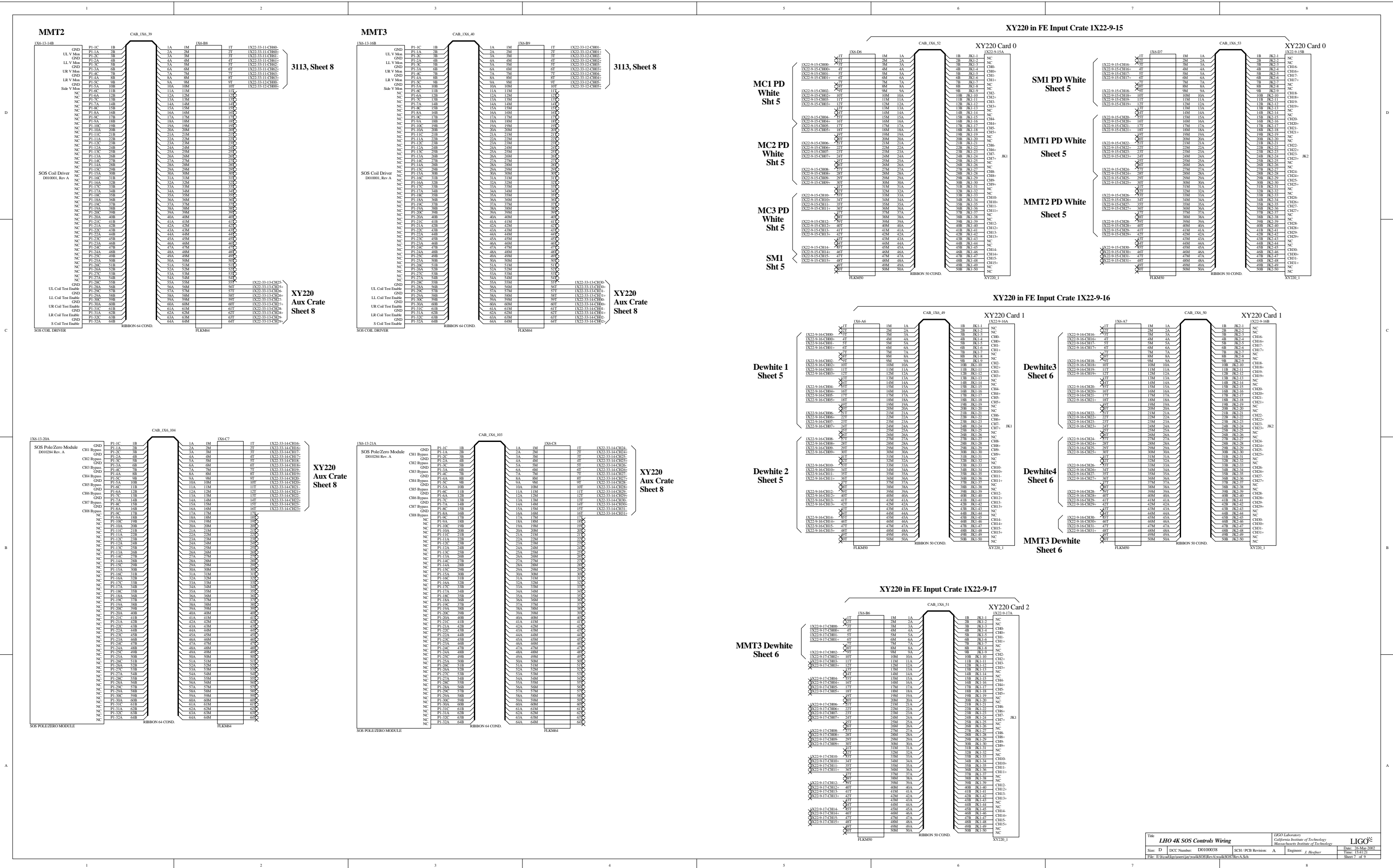
MMT2

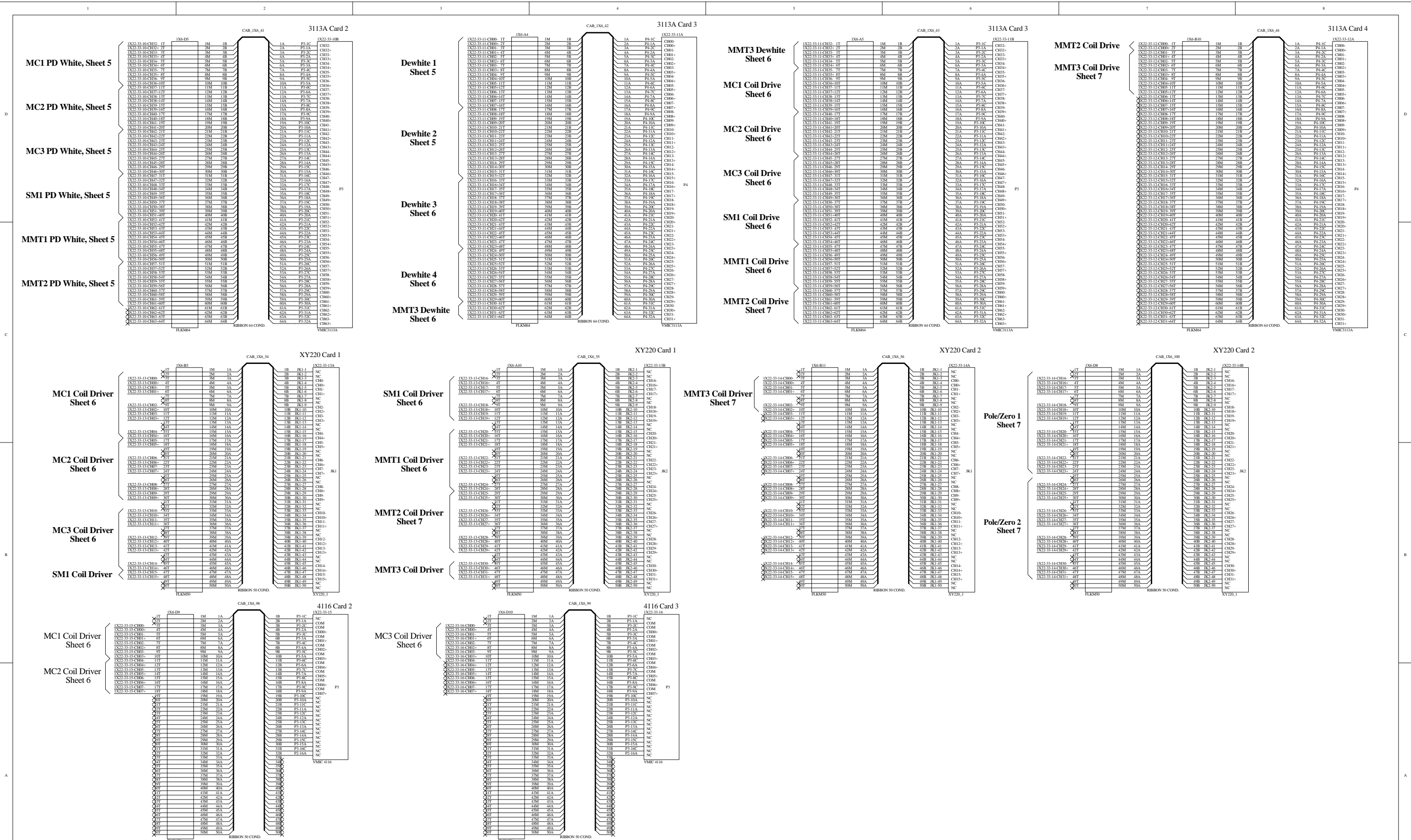








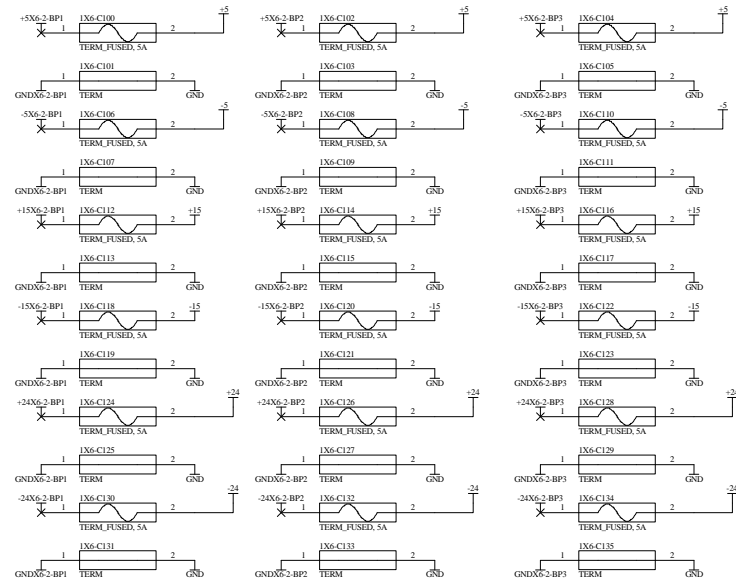






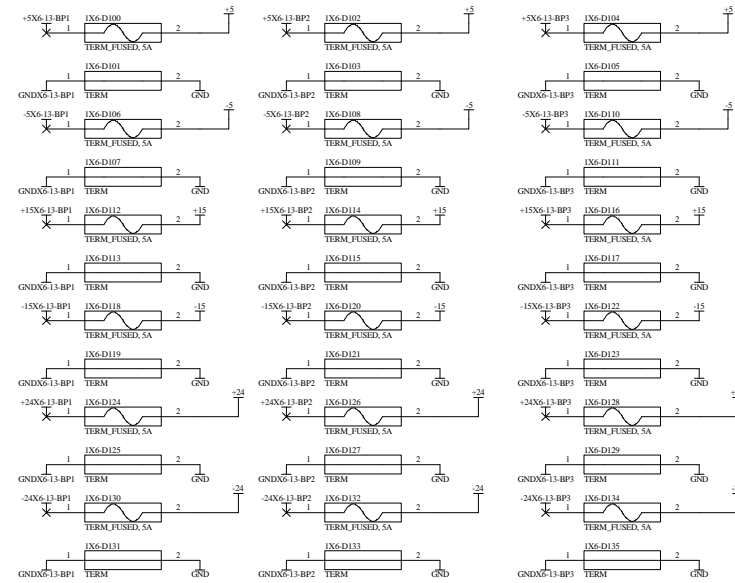
Eurocard Crate Power Connections for Crate 1X20-5

Note:  
Power Connections for Eurocard modules are made through the backplane and are designated as VX6-2-BP1. Bulk power supply connections to the eurocard backplane lugs are designated V in Rack 1X6-2.



Eurocard Crate Power Connections for Crate 1X20-22

Note:  
Power Connections for Eurocard modules are made through the backplane and are designated as VX6-13-BP1. Bulk power supply connections to the eurocard backplane lugs are designated V in Rack 1X6-13.



Rev	Description of Change	Date
00	Preliminary Fab Release	2/01
01	Move MMT3 outputs to SOS FE crate 1. Change cables CAB_1X7_23 to 1X7_27 to 1X6_93 to 1X6_97	4/01
02	As built changes to FE XY220 wiring on sheet 7. H/W channels made to match software.	5/01
03	1. Added Pole/Zero modules to MC mirror paths. 2. Changed MC coil drivers to Rev B model. 3. Added XY220 and 4116 channels for Pole/zero and Rev B coil driver additional controls.	2/02
A	Initial Release: Changes to MMT3 Dewhite Enable connections to FE XY220, Sheet 6 and 7 to match software	3/02

1

2

3

4

5

6

wa4kSOS1RevA  
wa4kSOS1RevA.Sch



wa4kSOS2RevA  
wa4kSOS2RevA.Sch



wa4kSOS3RevA  
wa4kSOS3RevA.Sch



wa4kSOS4RevA  
wa4kSOS4RevA.Sch



wa4kSOS5RevA  
wa4kSOS5RevA.Sch



wa4kSOS6RevA  
wa4kSOS6RevA.Sch



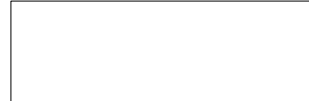
wa4kSOS7RevA  
wa4kSOS7RevA.Sch



wa4kSOS8RevA  
wa4kSOS8RevA.Sch



wa4kSOS9RevA  
wa4kSOS9RevA.Sch



D

D

C

C

B

B

A

A

Title		<i>LHO 4K SOS Controls Wiring</i>		LIGO Laboratory California Institute of Technology Massachusetts Institute of Technology		LIGO	
Size: B	DCC Number: D010038	SCH / PCB Revision: A	Engineer: J. Heefner	Date: 26-Mar-2002	Time: 15:39:49		
File: E:\hcad\ligo\users\jay\wa4kSOS\RevA\wa4kSOSRevA.Prj				Sheet 0 of 9			

1

2

3

4

5

6