

1

2

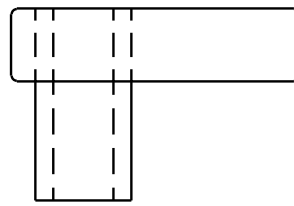
3

4

NOTES: (UNLESS OTHERWISE SPECIFIED)

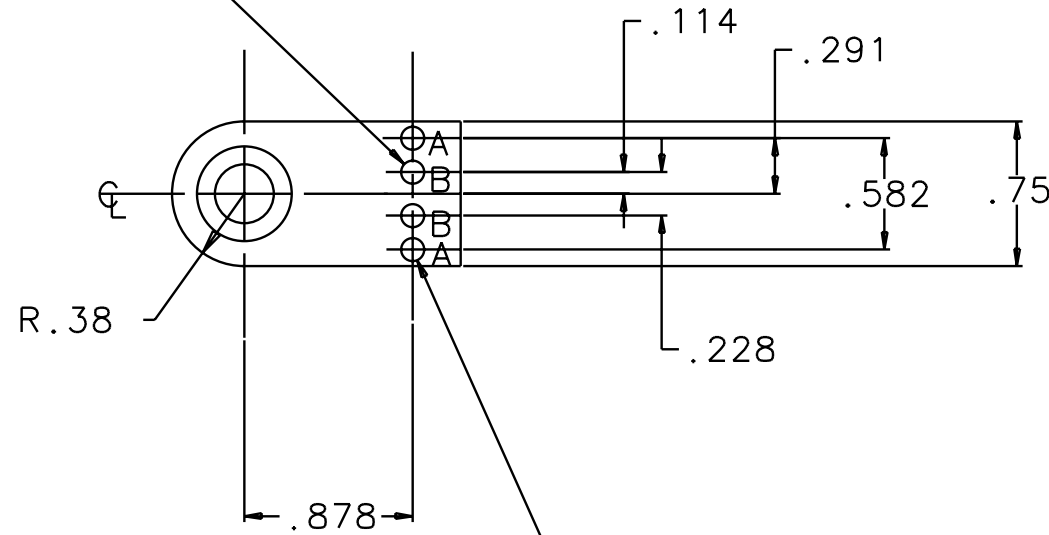
- 1. DIMENSIONS IN INCHES.
- 2. REMOVE ALL SHARP EDGES.
- 3. ENGRAVE OR ETCH PART WITH DRAWING NUMBER.

REV	DATE	DRAWN BY	CHECKED	DCC	DCN/DESCRIPTION
A	8-15-01	J.Romie			E010154/INITIAL RELEASE

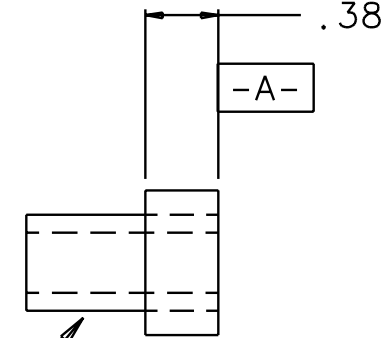


R.03, ALL AROUND

2X, ϕ .125, LABELED B



2X, ϕ .1268 $\begin{matrix} +.0005 \\ -.0000 \end{matrix}$
LABELED A



6X, PRESS FIT PRECISION
 DRILL BUSHING
 5/16" ID, 1/2" OD, 1.00" LONG
 MATERIAL: BRASS OR 300 SST
 ID TOL. = $+.0001/-0.0005$ "

\perp	.001	A
---------	------	---

QTY REQD	FSCM NO	PART OR IDENTIFYING NO	NOMENCLATURE OR DESCRIPTION	MATERIAL SPECIFICATION	ITEM NO
PARTS LIST					
UNLESS OTHERWISE SPECIFIED DIMENSIONS ARE IN INCHES TOLERANCES ARE:			APPROVALS		
FRACTIONS DECIMALS			DATE		
0.XX=±0.01			DRAWN J. Romie		
0.XXX=±0.002			CHECKED		
ANGLES=±0.5°			8/01		
DO NOT SCALE DRAWING			TITLE		
			LIGO CALIFORNIA INSTITUTE OF TECHNOLOGY MASSACHUSETTS INSTITUTE OF TECHNOLOGY		
			LEFT SIDE BLOCK FOR 40M BS		
NEXT ASSEMBLY D010131			MATERIAL ALUM 6061-T6		
FILE LOCATION /home/dcc/docs/D010123.pdf			FINISH NONE		
			DWC NO. D010123-A-D		
			SCALE 1/1		
			SHEET 1 OF 1		

1

2

3

4