

1

2

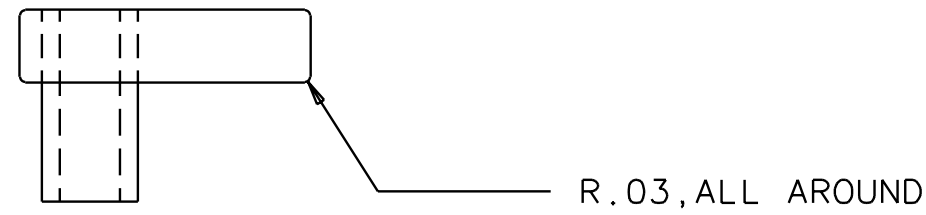
3

4

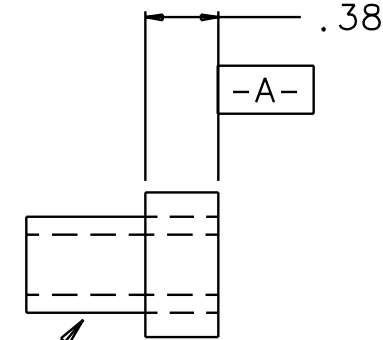
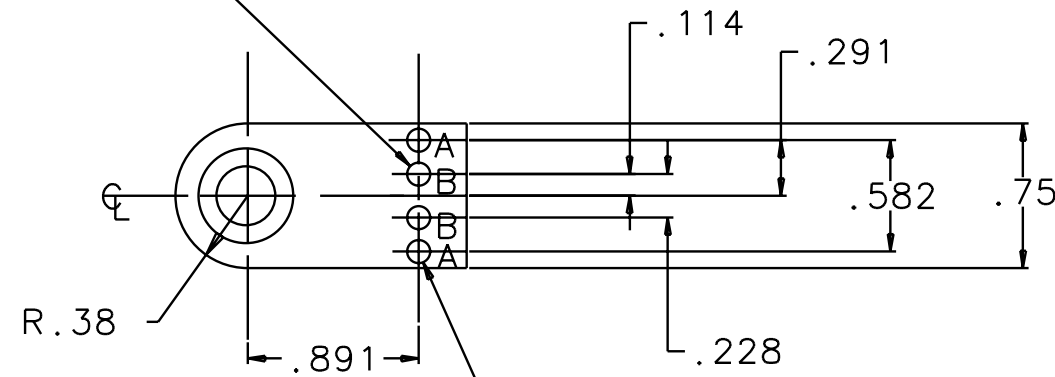
NOTES: (UNLESS OTHERWISE SPECIFIED)

- 1. DIMENSIONS IN INCHES.
- 2. REMOVE ALL SHARP EDGES.
- 3. ENGRAVE OR ETCH PART WITH DRAWING NUMBER.

REV	DATE	DRAWN BY	CHECKED	DCC	DCN/DESCRIPTION
A	8-15-01	J.Romie			E010154/INITIAL RELEASE



2X,  $\phi$ .125, LABELED B



6X, PRESS FIT PRECISION  
 DRILL BUSHING  
 5/16" ID, 1/2" OD, 1.00" LONG  
 MATERIAL: BRASS OR 300 SST  
 ID TOL. = +.0001/- .0005"

$\perp$	.001	A
---------	------	---

2X,  $\phi$ .1268  $^{+.0005}$   
 $_{-.0000}$   
 LABELED A

QTY REQD	FSCM NO	PART OR IDENTIFYING NO	NOMENCLATURE OR DESCRIPTION	MATERIAL SPECIFICATION	ITEM NO
PARTS LIST					
UNLESS OTHERWISE SPECIFIED DIMENSIONS ARE IN INCHES TOLERANCES ARE:			APPROVALS		DATE
FRACTIONS DECIMALS			DRAWN J. Romie		8/01
0.XX=±0.01			CHECKED		
0.XXX=±0.002					
ANGLES=±0.5°					
DO NOT SCALE DRAWING					
NEXT ASSEMBLY D010131			MATERIAL ALUM 6061-T6		
FILE LOCATION /home/dcc/docs/D010126.pdf			FINISH NONE		
			SCALE 1/1		SHEET 1 OF 1

LIGO CALIFORNIA INSTITUTE OF TECHNOLOGY  
 MASSACHUSETTS INSTITUTE OF TECHNOLOGY  
 TITLE LEFT SIDE BLOCK FOR 40M MCF1

DWG NO. D010126-A-D

1

2

3

4