

1

2

3

4

REV	DATE	DRAWN BY	CHECKED	DCC	DCN/DESCRIPTION
A	9/4/01	J. Romie			E010162/INITIAL RELEASE

NOTES: (UNLESS OTHERWISE SPECIFIED)
 1. DIMENSIONS IN INCHES.
 2. BREAK ALL SHARP EDGES.
 3. ALL MACHINING FLUIDS SHALL BE WATER SOLUABLE AND FREE OF SULFUR, CHLORINE AND SILICONE, SUCH AS CINCINNATI MILACRON'S CIMTECH 410 (STAINLESS STEEL.)
 ④ ETCH OR STAMP THE DRAWING PART NUMBER ON NOTED SURFACE OF PART AND THEN A THREE DIGIT SERIAL NUMBER. SERIAL NUMBERS START AT 001 FOR THE FIRST PART AND PROCEED CONSEQUETIVELY. USE .07" HIGH CHARACTERS. EXAMPLE: D010172-A 001

A

A

B

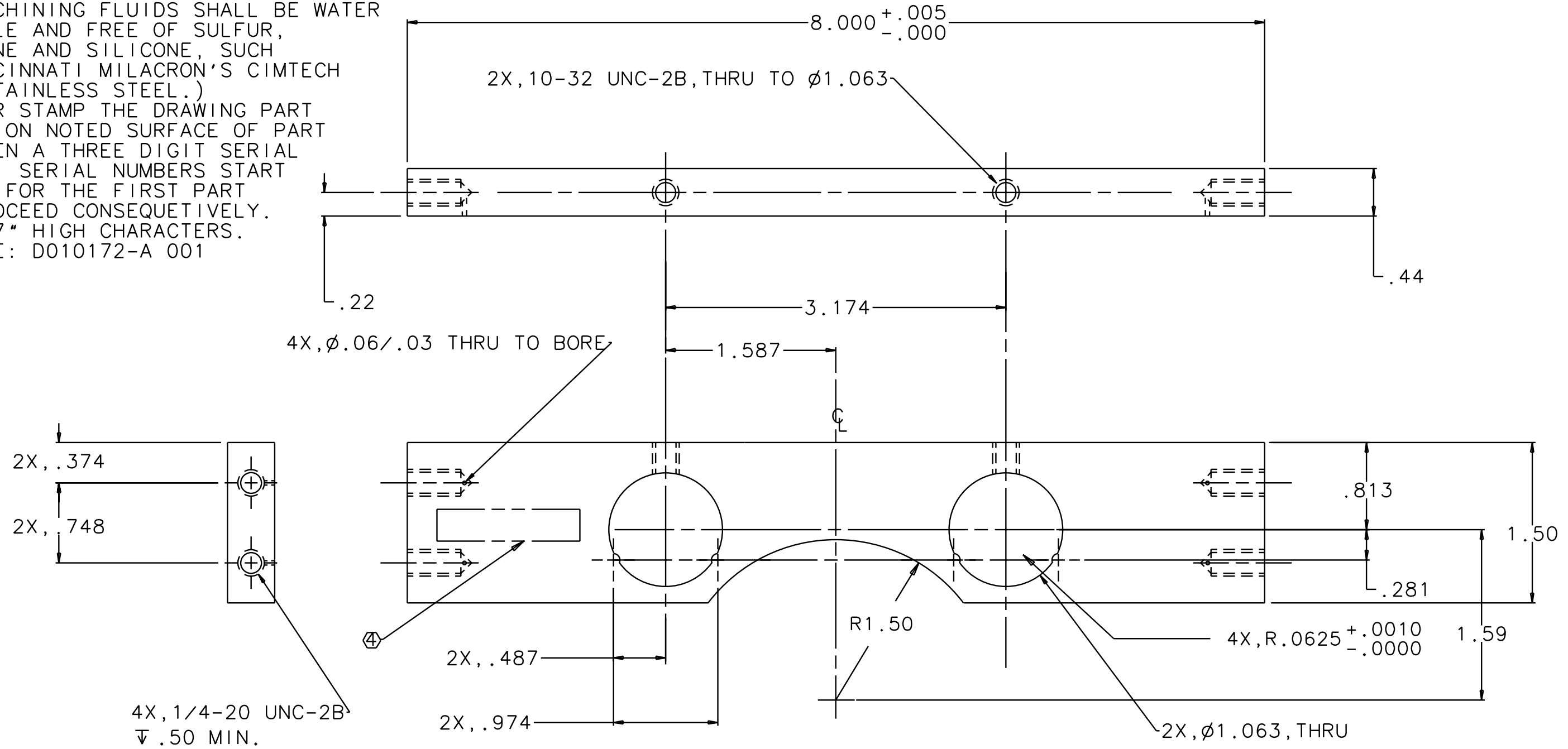
B

C

C

D

D



4X, 1/4-20 UNC-2B
 ▽ .50 MIN.

QTY REQD	FSCM NO	PART OR IDENTIFYING NO	NOMENCLATURE OR DESCRIPTION	MATERIAL SPECIFICATION	ITEM NO
PARTS LIST					
UNLESS OTHERWISE SPECIFIED DIMENSIONS ARE IN INCHES TOLERANCES ARE:			APPROVALS	DATE	LIGO CALIFORNIA INSTITUTE OF TECHNOLOGY MASSACHUSETTS INSTITUTE OF TECHNOLOGY
FRACTIONS DECIMALS 0.XX=±0.01 0.XXX=±0.005 ANGLES=±0.5°			J.ROMIE	9/01	
DO NOT SCALE DRAWING			CHECKED		TITLE 40m TM HEAD HOLDER, TOP
NEXT ASSEMBLY D010163			MATERIAL 300 SERIES SST		DWG NO. D010172
FILE LOCATION /home/dcc/docs/D010172.pdf			FINISH		REV A
SCALE 1/1				SHEET 1 OF 1	

1

2

3

4