

1

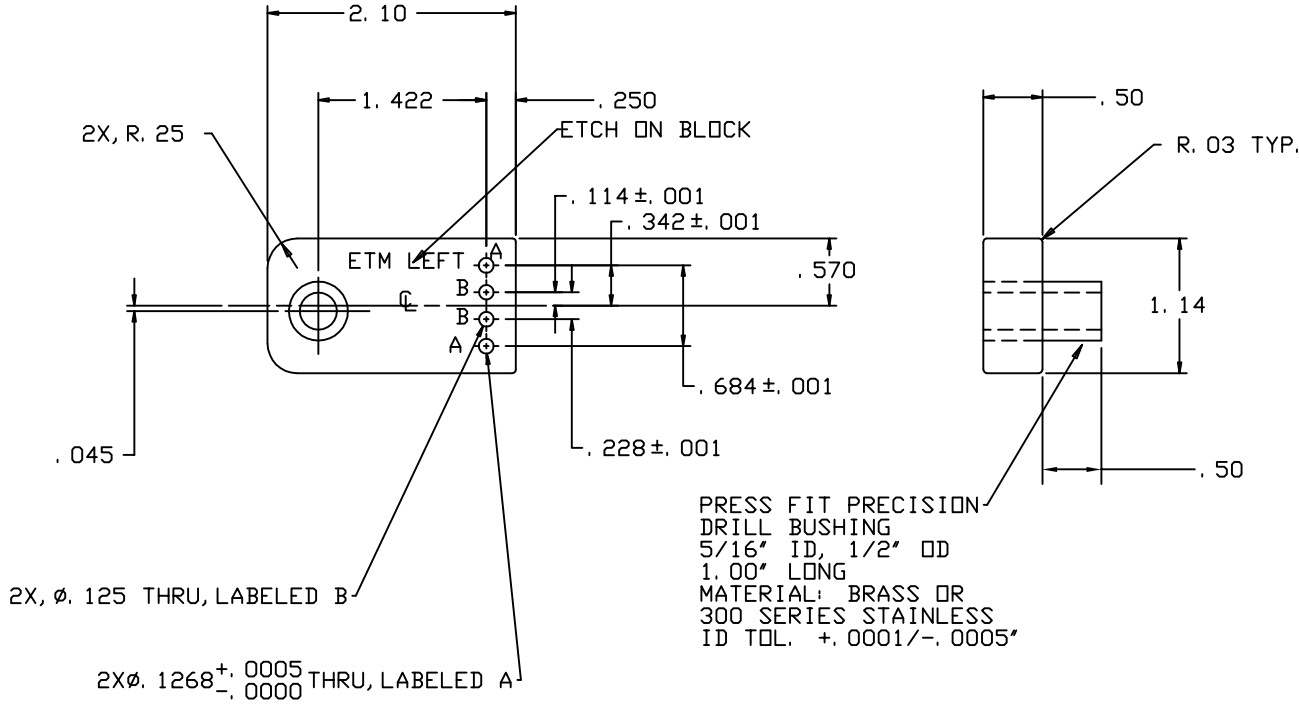
2

3

4

NOTES: (UNLESS OTHERWISE SPECIFIED)
1. DIMENSIONS IN INCHES.

REV	DATE	DRAWN BY	CHECKED	DC	DCN/DESCRIPTION
A	9/7/01	J. ROMIE			E010162/INITIAL RELEASE
B	4/25/03	J. ROMIE			E030212/SWITCH SIDES OF BUSHING



PRESS FIT PRECISION
 DRILL BUSHING
 5/16" ID, 1/2" OD
 1.00" LONG
 MATERIAL: BRASS OR
 300 SERIES STAINLESS
 ID TOL. +.0001/- .0005"

A

B

C

D

A

B

C

D

1

2

3

4

QTY REQD	PSCH NO	PART OR IDENTIFYING NO	NOMENCLATURE OR DESCRIPTION	MATERIAL SPECIFICATION	ITER NO
PARTS LIST					
UNLESS OTHERWISE SPECIFIED DIMENSIONS ARE IN INCHES TOLERANCES ARE			APPROVALS DATE		
FRACTIONS DECIMALS			DRAWN J. ROMIE 9/01		
0. XX=±0.01			CHECKED		
0. XXX=±0.005					
ANGLES=±0.5°					
DO NOT SCALE DRAWING			TITLE		
			LIGO CALIFORNIA INSTITUTE OF TECHNOLOGY MASSACHUSETTS INSTITUTE OF TECHNOLOGY		
			40m ETM LEFT EAR		
NEXT ASSEMBLY D010182			DWG NO. D010197-B		
FILE LOCATION /home/dcc/docs/D010197.pdf			MATERIAL ALUM 6061-T6		
			FINISH NONE		
			SCALE 1/1		
			SHEET 1 OF 1		