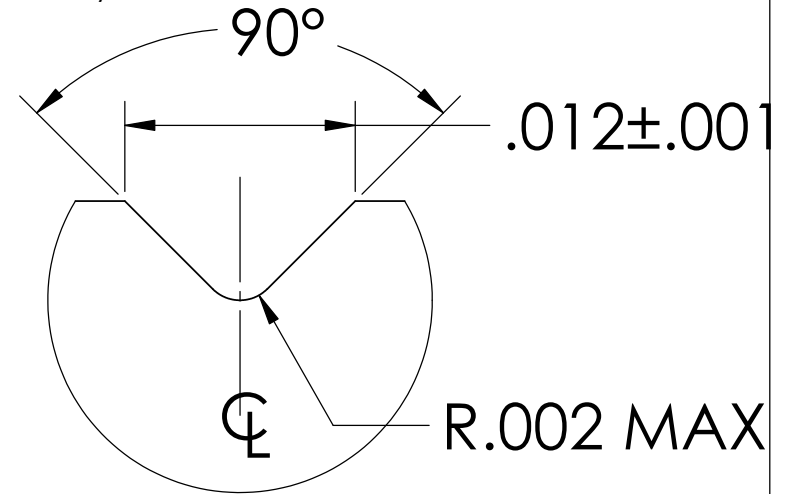
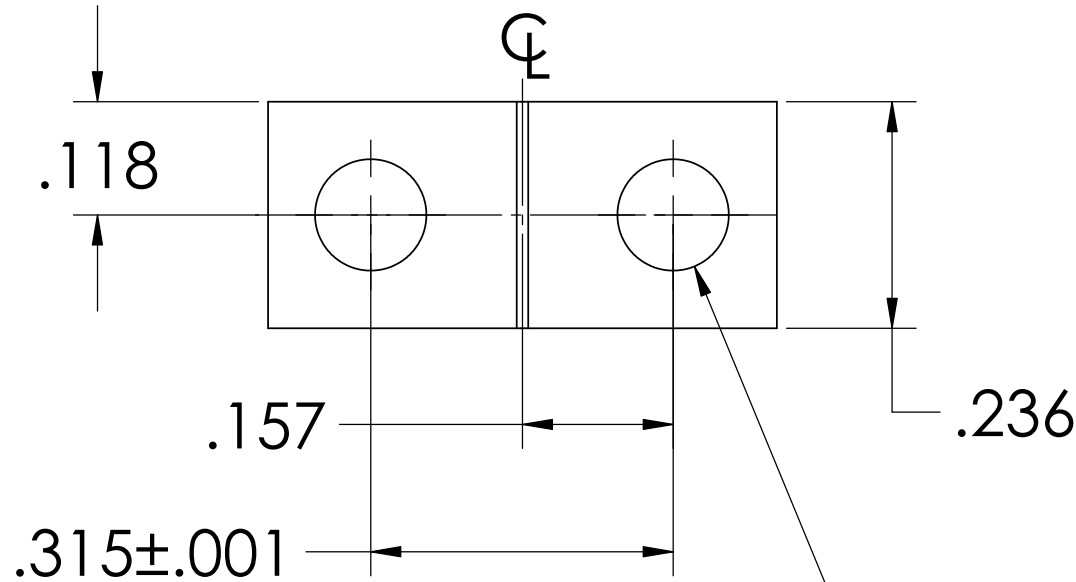


NOTES: (UNLESS OTHERWISE SPECIFIED)

1. DIMENSIONS IN INCHES

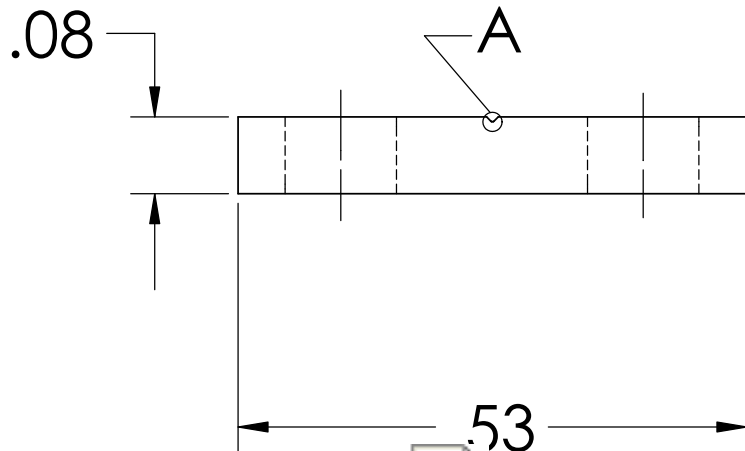
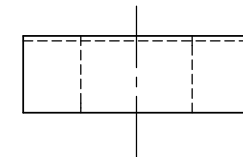
2. ALL MACHINING FLUIDS SHALL BE WATER SOLUBLE AND FREE OF SULFUR, CHLORINE AND SILICONE, SUCH AS CINCINNATI MILACRON'S CIMTECH 410 (STAINLESS STEEL)

REV.	DATE	COMMENT
A	24th JUNE 2004	E040303-00



DETAIL A
SCALE 100 : 1

2X, ϕ .116



D020135_upperbladewireclampplate.step

DIMENSIONS ARE IN INCHES		NAME	DATE	CALIFORNIA INSTITUTE OF TECHNOLOGY MASSACHUSETTS INSTITUTE OF TECHNOLOGY
TOLERANCES: .XX ±0.01 .XXX ±0.005 ANGULAR±1°		CIT/RJ	05/02	
DRAWN				SYSTEM ADVANCED LIGO
CHECKED				SUB-SYSTEM SUS
MATERIAL				NEXT ASSY MC: UPPER MASS
300 SERIES STAINLESS		COMMENTS:		PART NAME UPPER BLADE WIRE CLAMP PLATE
FINISH				SIZE A DWG. NO. D020135 REV. A
				SCALE: NTS SHEET 1 OF 1