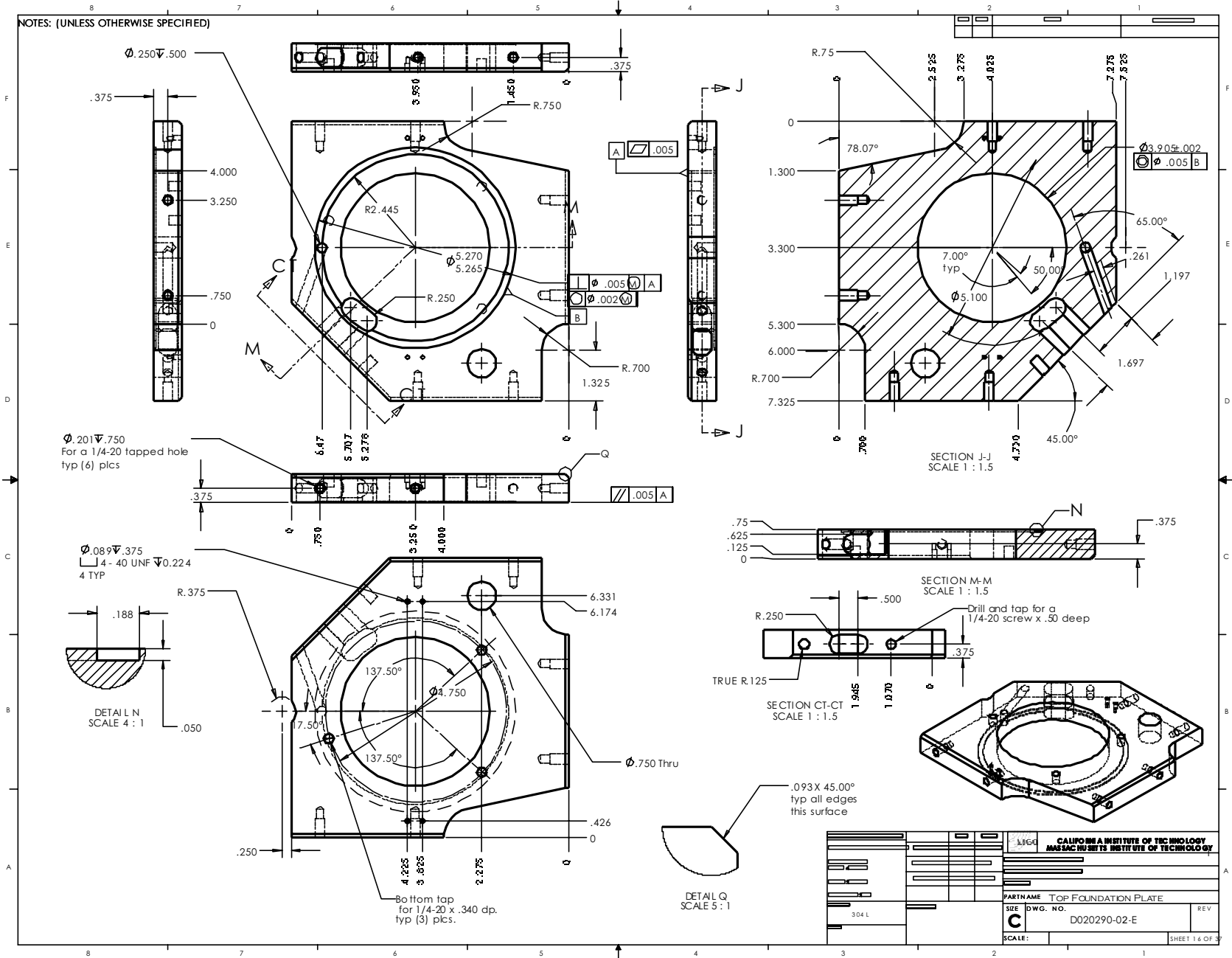


NOTES: (UNLESS OTHERWISE SPECIFIED)



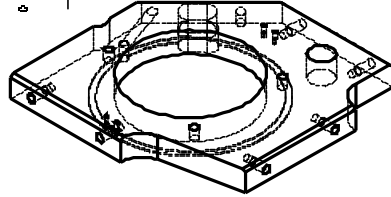
$\phi .201 \nabla .750$
For a 1/4-20 tapped hole
typ (6) plcs

$\phi .089 \nabla .375$
4 - 40 UNF $\nabla .0224$
4 TYP

DETAIL L
SCALE 4 : 1

Bottom tap
for 1/4-20 x .340 dp.
typ (3) plcs.

DETAIL Q
SCALE 5 : 1



304 L		CALIFORNIA INSTITUTE OF TECHNOLOGY MASSACHUSETTS INSTITUTE OF TECHNOLOGY	
PARTNAME		TOP FOUNDATION PLATE	
SEE	DWG. NO.	REV	
C	D020290-02-E		
SCALE:		SHEET 1 6 OF 3	

1 Required for
each actuator