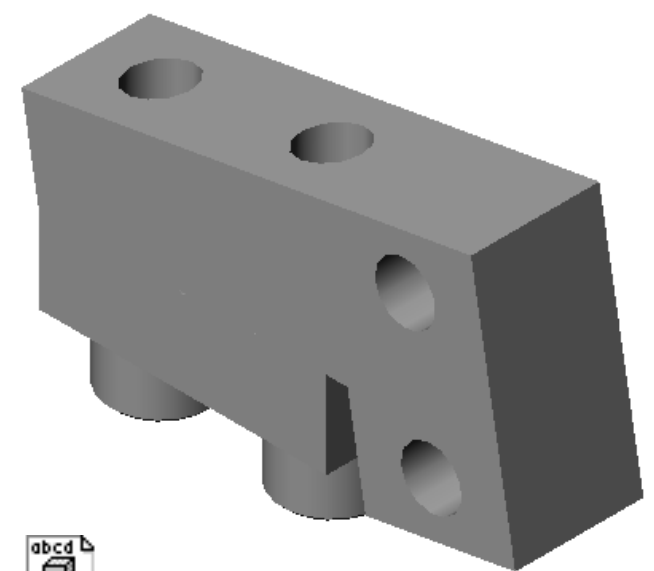
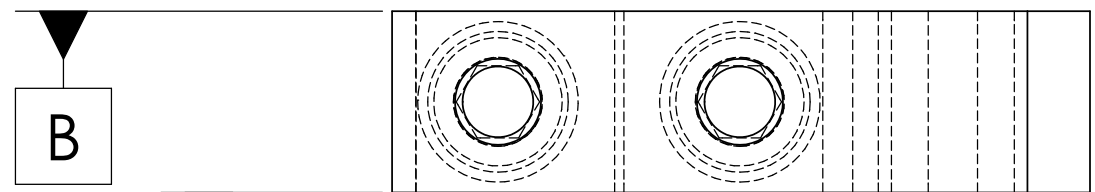
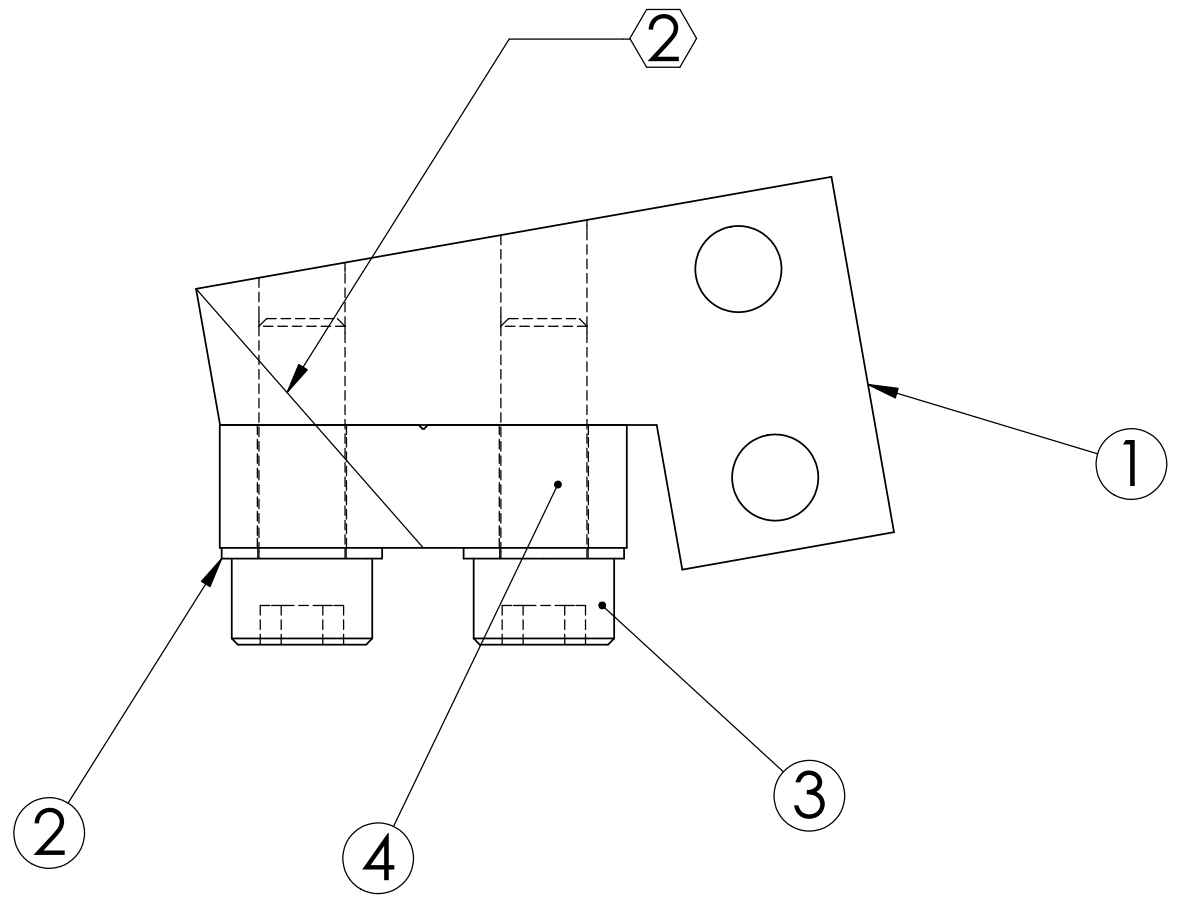


REV.	DATE	DCN #	DRAWING TREE #



D020319\_Assem3\_upperbladewireclamp.sat



ALT	REQ.	SPARE	TOT.	PART NUMBER	DESCRIPTION	MATERIAL
1	0	1	1	D020135	UPPER BLADE WIRE CLAMP PLATE (ALT TO D030042)	300 SSTL
4	1	0	1	D030042	UPPER BLADE WIRE CLAMP PLATE	300 SSTL
3	2	2	4		Ag-SST SOCKET HEAD CAP SCREW #4-40 UNC-3A X 0.3125 LONG	300 SSTL
2	2	2	4		FLAT WASHERS NAS 620-C4L (OR EQUIV.)	300 SSTL
1	1	0	1	D020198	UPPER BLADE WIRE CLAMP	300 SSTL

PARTS LIST		NAME	DATE	LIGO	
NOTES: (UNLESS OTHERWISE SPECIFIED)	DRAWN	CIT/MPL	01/31/03	CALIFORNIA INSTITUTE OF TECHNOLOGY MASSACHUSETTS INSTITUTE OF TECHNOLOGY IGR, UNIVERSITY OF GLASGOW / GEO 600 GROUP	
1. FLY CUT DATUM -A- AND -B- SURFACE TO ACHIEVE FLATNESS OF .001.	CHECKED			SYSTEM ADVANCED LIGO	
2. SCRIBE OR ETCH LINE APPROX AS SHOWN .02 DEEP .02 WIDE AFTER FLYCUTTING AND PRIOR TO DISASSEMBLY.				SUB-SYSTEM SUS	
				NEXT ASSY MC: UPPER MASS	
				PART NAME UPPER BLADE WIRE CLAMP ASSEMBLY	
	SIZE	DWG. NO.	REV.		
	B	D020319	01		
	SCALE: NTS	PROJECTION:		SHEET 1 OF 1	