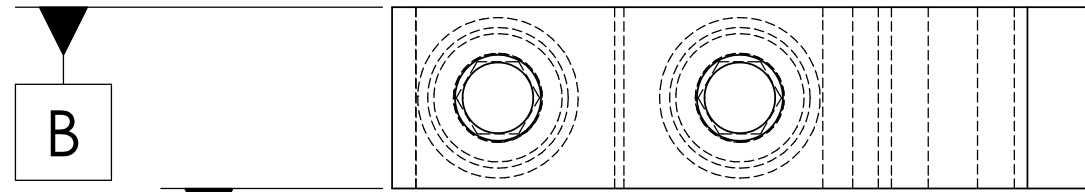
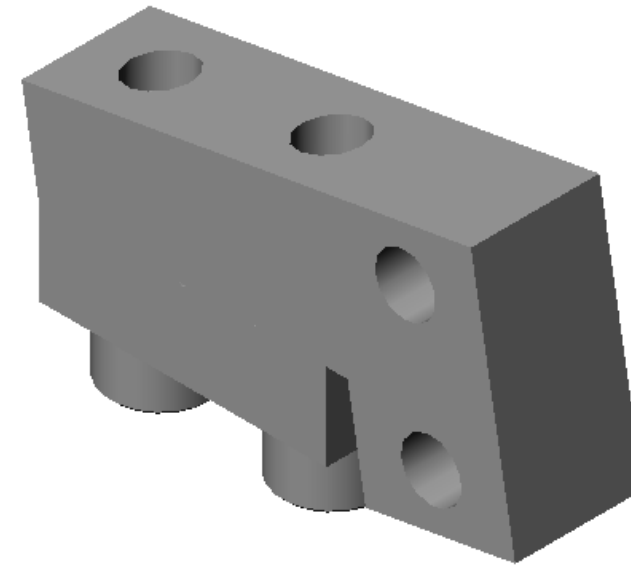


REV.	DATE	DCN #	DRAWING TREE #
A	24th JUNE 2004	E040303-00	

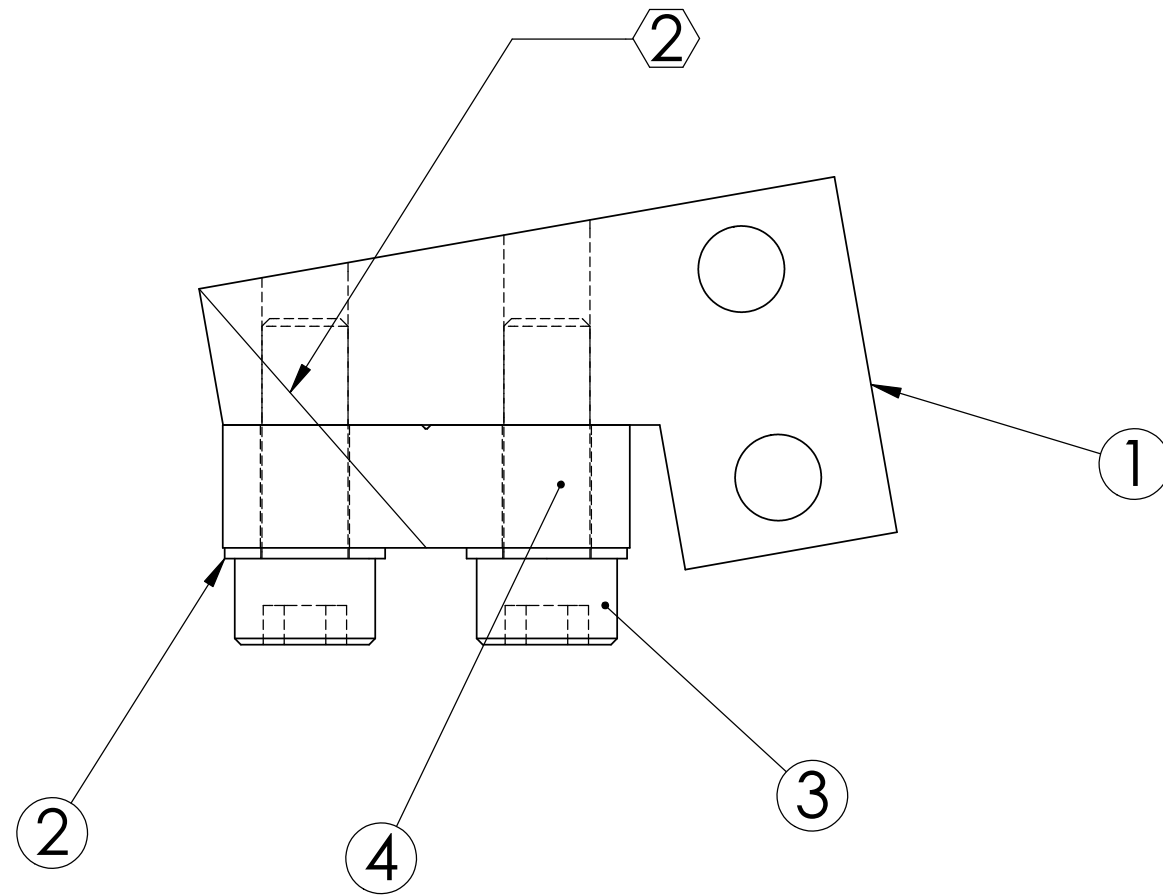


A

B





D020319_Assem3_upperbladewireclamp.step



ALT	REQ.	SPARE	TOT.	PART NUMBER	DESCRIPTION	MATERIAL
1	0	1	1	D020135	UPPER BLADE WIRE CLAMP PLATE (ALT TO D030042)	300 SSSL
4	1	0	1	D030042	UPPER BLADE WIRE CLAMP PLATE	300 SSSL
3	2	2	4		Ag-SST SOCKET HEAD CAP SCREW #4-40 UNC-3A X 0.3125 LONG	300 SSSL
2	2	2	4		FLAT WASHERS NAS 620-C4L (OR EQUIV.)	300 SSSL
1	1	0	1	D020198	UPPER BLADE WIRE CLAMP	300 SSSL

PARTS LIST

NOTES: (UNLESS OTHERWISE SPECIFIED) 1. FLY CUT DATUM -A- AND -B- SURFACE TO ACHIEVE FLATNESS OF .001. ② SCRIBE OR ETCH LINE APPROX AS SHOWN .02 DEEP .02 WIDE AFTER FLYCUTTING AND PRIOR TO DISASSEMBLY.	DRAWN	NAME	DATE	 CALIFORNIA INSTITUTE OF TECHNOLOGY MASSACHUSETTS INSTITUTE OF TECHNOLOGY IGR, GLASGOW UNIVERSITY GEO 600 GROUP
	CHECKED	CIT	01/31/03	
DIMENSIONS ARE IN INCHES				SYSTEM ADVANCED LIGO SUB-SYSTEM SUS NEXT ASSY MC: UPPER MASS PART NAME UPPER BLADE WIRE CLAMP ASSEMBLY
TOLERANCES: .XX ±:0.01 .XXX ±:0.005 ANGULAR: ±0.5		SIZE	DWG. NO.	REV.
		B	D020319	A
SCALE: NTS		PROJECTION: 		SHEET 1 OF 1