

NOTES: (UNLESS OTHERWISE SPECIFIED)

1. DIMENSIONS IN INCHES

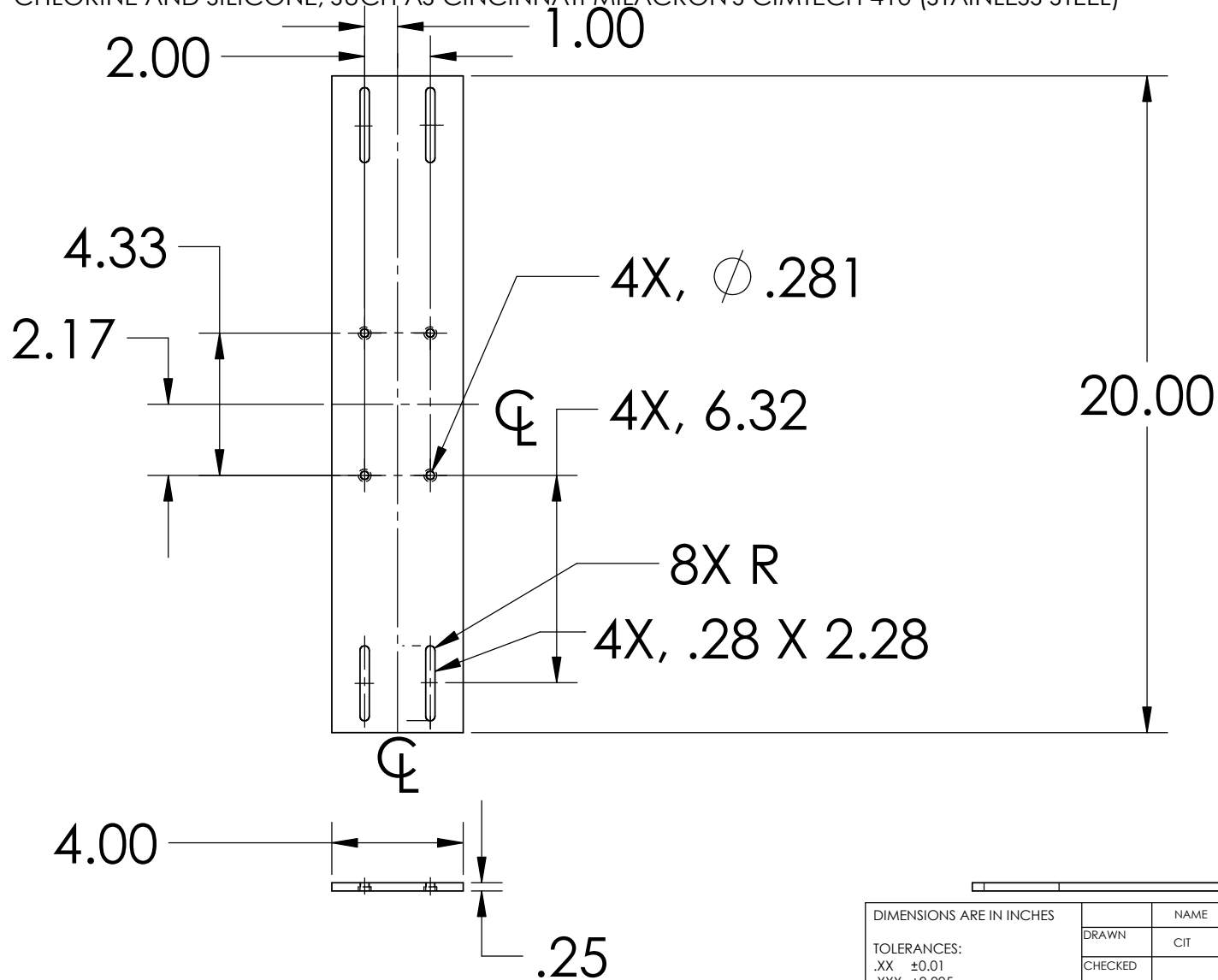
2. REMOVE ALL SHARP EDGES, R.02 MIN


3. ALL MACHINING FLUIDS SHALL BE WATER SOLUBLE AND FREE OF SULFUR, CHLORINE AND SILICONE, SUCH AS CINCINNATI MILACRON'S CIMTECH 410 (STAINLESS STEEL)

REV.	DATE
A	24TH JUNE 2004 F040303-00



D020449\_catcherbar\_testmass.step



DIMENSIONS ARE IN INCHES		NAME	DATE	 <b>CALIFORNIA INSTITUTE OF TECHNOLOGY MASSACHUSETTS INSTITUTE OF TECHNOLOGY</b>
TOLERANCES: .XX ±0.01 .XXX ±0.005 ANGULAR ±1°		DRAWN CIT	09/02	
MATERIAL <b>6061-T6-Al</b>		CHECKED		SUB-SYSTEM <b>SUS</b>
FINISH		COMMENTS:		NEXT ASSY <b>MC: WIRE JIG</b>
				PART NAME CATCHER BAR FOR TEST MASS
		SIZE <b>A</b>	DWG. NO. <b>D020449</b>	REV. <b>A</b>
		SCALE: NTS		SHEET 1 OF 1