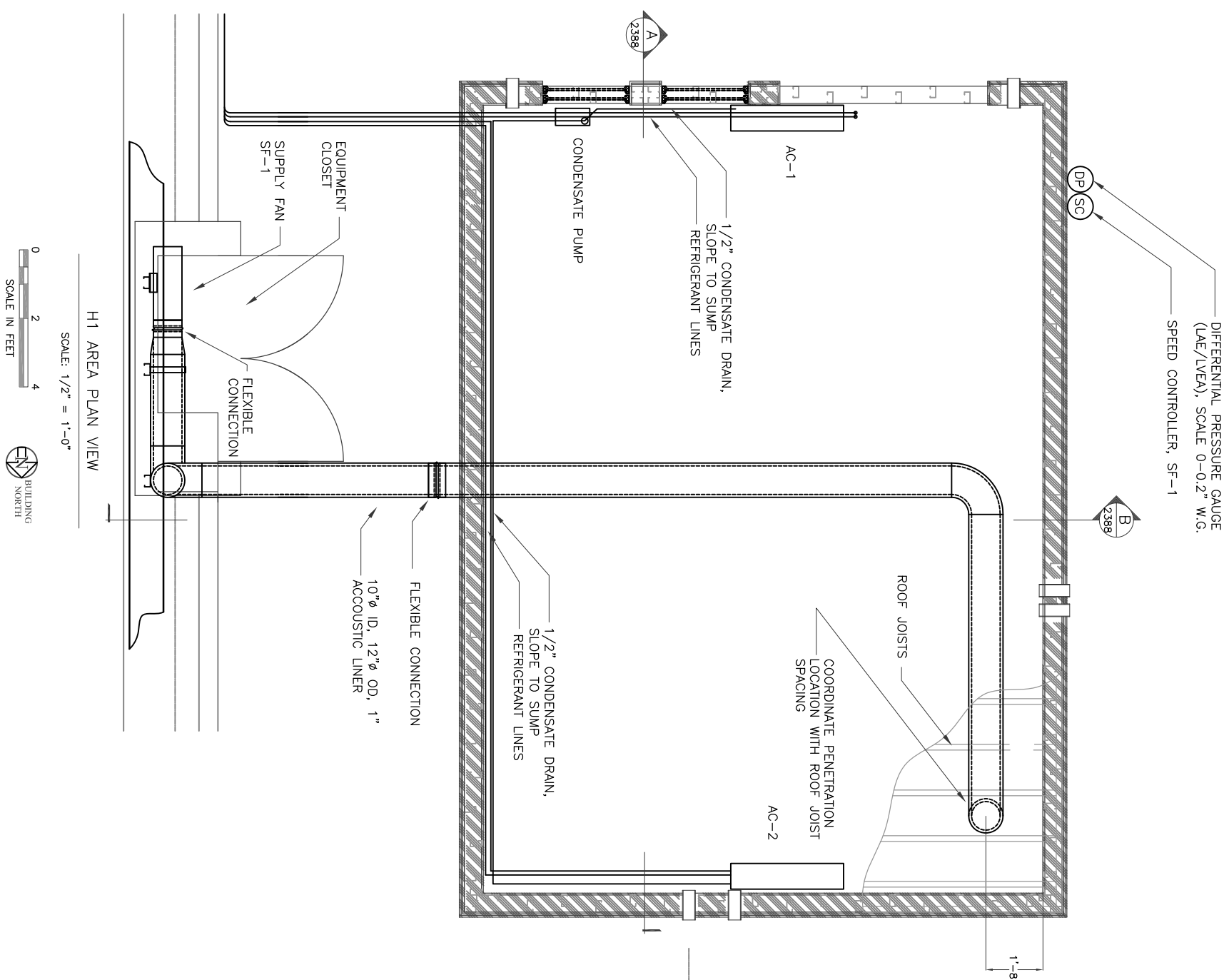


DUCTLESS AIR CONDITIONER (AC) SCHEDULE												
SYMBOL	ROOM LOCATION	TYPE	COOLING			INDOOR UNIT		OUTDOOR UNIT		MFR	FEATURES	
			TOTAL CAPACITY (BTU)	SEER	MCA (AMPS)	V/PH	MODEL	MOCP (AMPS)	V/PH			MODEL
AC-1	LAE-H1	DUCTLESS WALL MOUNT	12,000	15.2	1.0	208/1	PKA-A12HA	15	208/1	PUV-A12NHA3	MTSUBISHI	PROVIDE LOW AMBIENT KIT, CONDENSATE PUMP.
AC-2	LAE-H1	DUCTLESS WALL MOUNT	12,000	15.2	1.0	208/1	PKA-A12HA	15	208/1	PUV-A12NHA3	MTSUBISHI	PROVIDE LOW AMBIENT KIT, WIRED THERMOSTAT

BOOSTER FAN (BF) SCHEDULE											
SYMBOL	LOCATION	TYPE	AIRFLOW (CFM)	STATIC PRESSURE (IN WG)	DRIVE	MOTOR		CONTROL	MFR/MODEL	FEATURES	
						HP	RPM				V/PH
SF-1	ABOVE LVA EQUIP CLOSET	IN-LINE AXIAL	300	0.75	DIRECT	1/2	1870	120/1	VFD/MANUAL ADJUST FOR ROOM PRESSURE	S&P INLINE MIXED FLOW DUCT FAN, SL-TD-250 (10')	PROVIDE WITH ROTARY SPEED CONTROL

NOTE: DWNER SHALL DETERMINE ELECTRICAL PANEL AND CIRCUIT FOR EQUIPMENT POWER.



DRAWING: LIGO-D1002387-V1

PRINTED BY: GI on 9/13/2010 8:06 AM

DRAWING NUMBER
2387
REV
V1

CALIFORNIA INSTITUTE OF TECHNOLOGY
LIGO HANFORD OBSERVATORY
HIBBS ENGINEERING, INC.
KENNEWICK, WASHINGTON

H1 LASER AREA ENCLOSURE
MECHANICAL
PLAN & SCHEDULES
PROJECT NUMBER: 1036.01
CAD FILE: 1036M01

© 2010 Hibbs Engineering, Inc.
DRAWN BY: GLH
CHECKED BY:
DESIGN A/E DESIGN GM
HEI APPROVAL

DATE OF ISSUE				
REV No	DATE	BY	DESCRIPTION	APPROVED