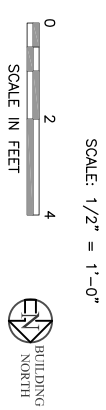
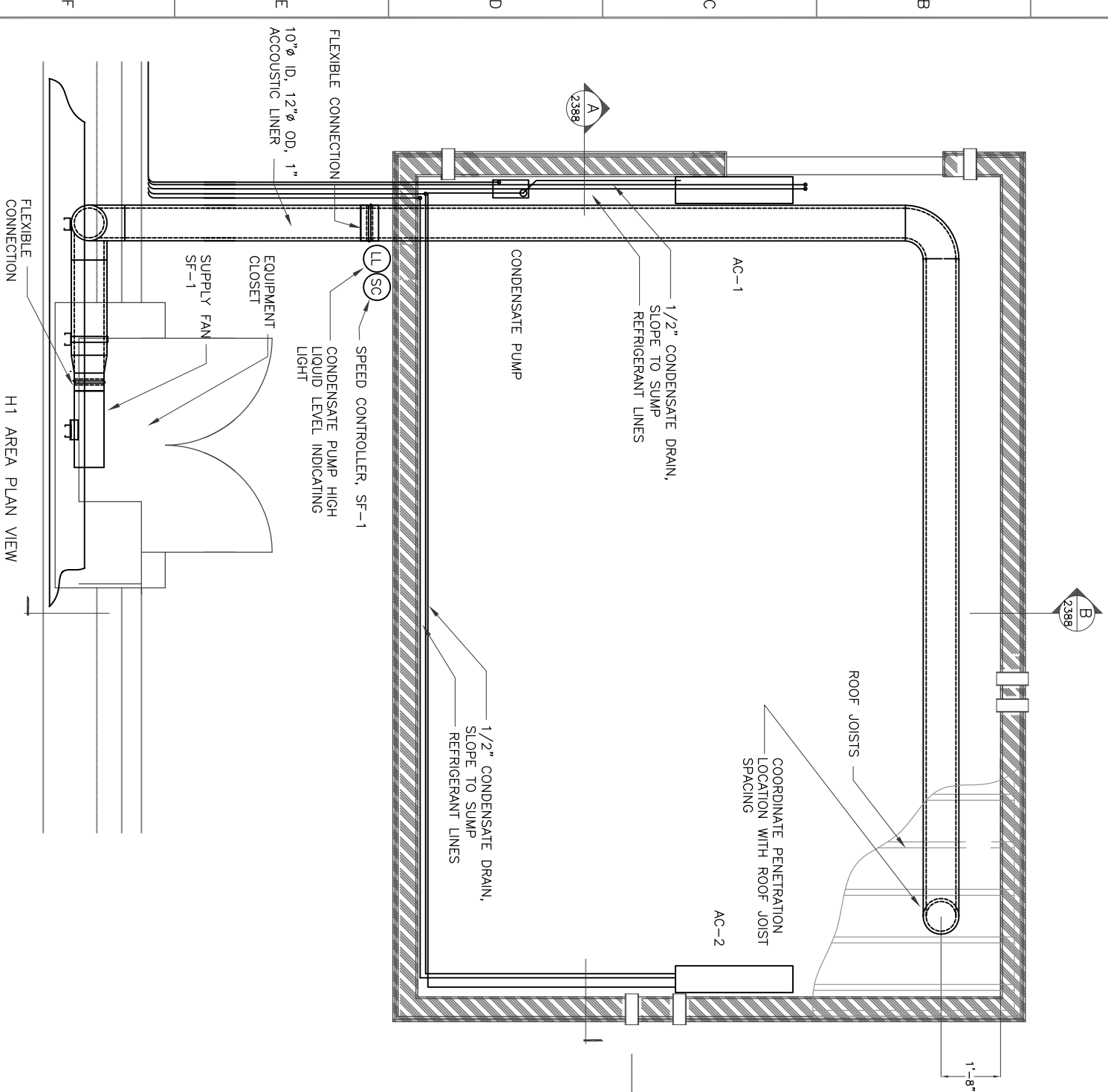


DUCTLESS AIR CONDITIONER (AC) SCHEDULE												
SYMBOL	ROOM LOCATION	TYPE	COOLING			INDOOR UNIT		OUTDOOR UNIT		MFR	FEATURES	
			TOTAL CAPACITY (BTU)	SEER	MCA (AMPS)	V/PH	MODEL	MOP (AMPS)	V/PH			MODEL
AC-1	LAE-H1	DUCTLESS WALL MOUNT	12,000	15.2	1.0	208/1	PKA-A12HA	15	208/1	PVU-A12NHA3	MITSUBISHI	PROVIDE LOW AMBIENT KIT, CONDENSATE PUMP.
AC-2	LAE-H1	DUCTLESS WALL MOUNT	12,000	15.2	1.0	208/1	PKA-A12HA	15	208/1	PVU-A12NHA3	MITSUBISHI	PROVIDE LOW AMBIENT KIT, WIRED THERMOSTAT

NOTE: OWNER SHALL DETERMINE ELECTRICAL PANEL AND CIRCUIT FOR EQUIPMENT POWER.
NOTE: PROVIDE HIGH LEVEL INDICATOR FOR CONDENSATE PUMP. LOCATE INDICATOR LIGHT AS SHOWN ON PLAN.

SUPPLY FAN (SF) SCHEDULE											
SYMBOL	LOCATION	TYPE	AIRFLOW (CFM)	STATIC PRESSURE (IN WG)	DRIVE	MOTOR		CONTROL	MFR/MODEL	FEATURES	
			300	0.75		HP	RPM				V/PH
SF-1	ABOVE LEVEL EQUIP CLOSET	IN-LINE AXIAL	300	0.75	DIRECT	1/2	1870	120/1	VFD/MANUAL ADJUST FOR ROOM PRESSURE	S&P INLINE MIXED FLOW DUCT FAN, SL-TD-250 (10")	PROVIDE WITH ROTARY SPEED CONTROL

NOTE: OWNER SHALL DETERMINE ELECTRICAL PANEL AND CIRCUIT FOR EQUIPMENT POWER.



SCALE: 1/2" = 1'-0"
SCALE IN FEET



REV No	DATE	BY	DESCRIPTION	APPROVED
v2	10/21/10	GLH	MOVED SUPPLY AIR DUCT SOUTH.	

DRAWN BY:	GLH
CHECKED BY:	
DESIGN A/E	DESIGN GM
HEI APPROVAL	

H1 LASER AREA ENCLOSURE MECHANICAL PLAN & SCHEDULES	
PROJECT NUMBER: 1036.01	CAD FILE: 1036M01

CALIFORNIA INSTITUTE OF TECHNOLOGY
LIGO HANFORD OBSERVATORY

HIBBS ENGINEERING, INC.
KENNEWICK, WASHINGTON

DRAWING NUMBER	2387
REV	v2

DRAWING: LIGO-D1002387