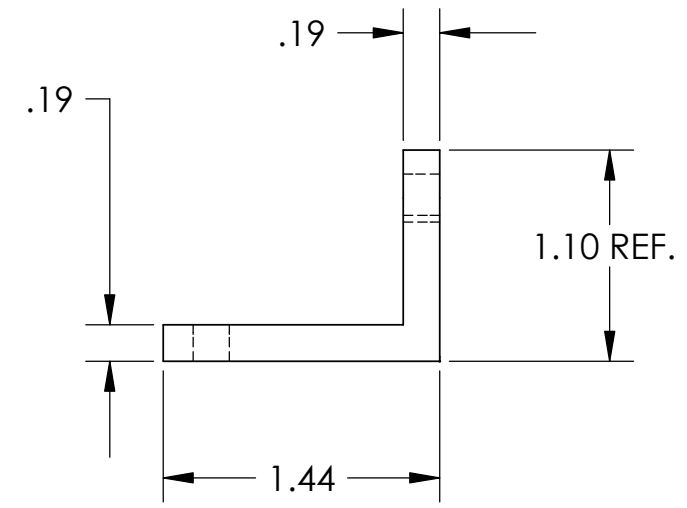
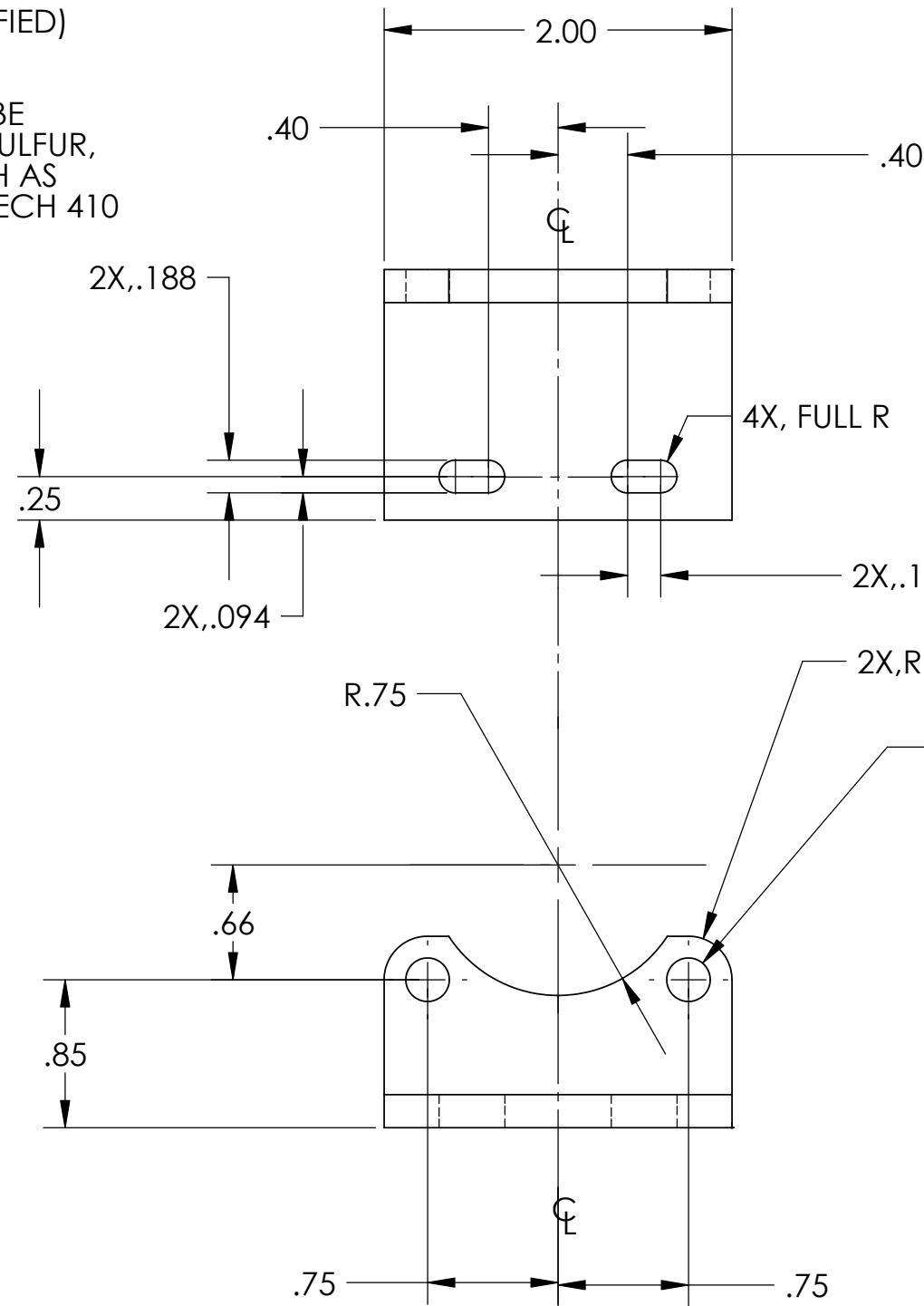


NOTES: (UNLESS OTHERWISE SPECIFIED)

1. DIMENSIONS IN INCHES.
2. BREAK ALL SHARP EDGES.
3. ALL MACHINING FLUIDS SHALL BE WATER SOLUBLE AND FREE OF SULFUR, CHLORINE AND SILICONE, SUCH AS CINCINNATI MILACRON'S CIMTECH 410 (STAINLESS STEEL.)



REV.	DATE	DCN #	DRAWING TREE #
A	7/04	E040303-00	E030507-A



D020523\_Face\_Bracket.step

ITEM NO.	REQ.	SPARE	TOT.	PART NUMBER	DESCRIPTION	SUPPLIER
PARTS LIST						
UNLESS OTHERWISE SPECIFIED: DIMENSIONS ARE IN INCHES				DATE	NAME	<b>CALIFORNIA INSTITUTE OF TECHNOLOGY MASSACHUSETTS INSTITUTE OF TECHNOLOGY</b>
TOLERANCES: .XX ±:0.01 .XXX ±:0.005 ANGULAR: ±0.5 DEG				DRAWN	1/03	
MATERIAL				CHECKED		SYSTEM
ALUM 6061-T6						SUB-SYSTEM
FINISH						NEXT ASSY
NONE						MODE CLEANER SUSPENSION
				COMMENTS:		PART NAME
						FACE BRACKET
						SIZE
						DWG. NO.
						<b>B</b>
						<b>D020523</b>
						REV
						<b>A</b>
						SCALE: 1/1
						SHEET 1 OF 1