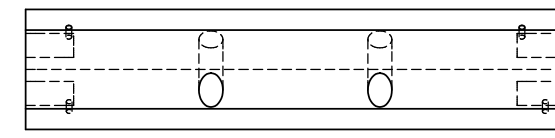
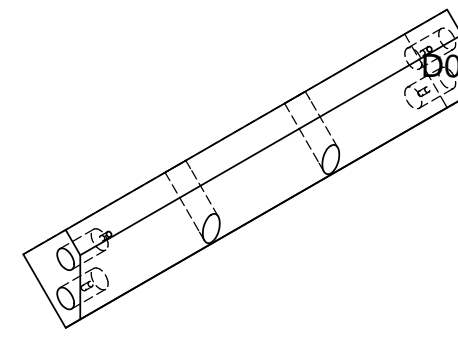
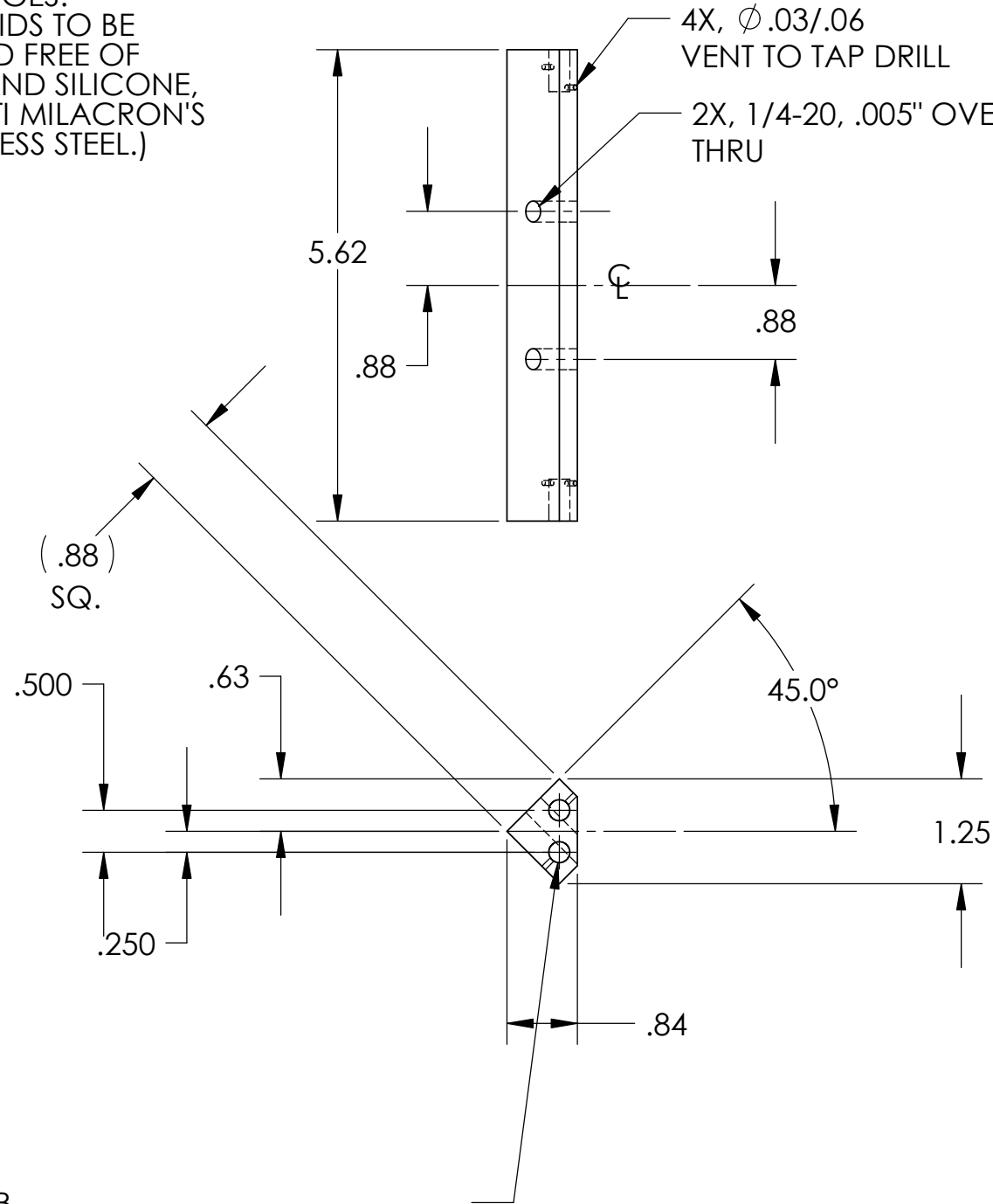


NOTES: (UNLESS OTHERWISE SPECIFIED)  
 1. DIMENSIONS IN INCHES.  
 2. BREAK ALL SHARP EDGES.  
 3. ALL MACHINING FLUIDS TO BE WATER SOLUBLE AND FREE OF SULFUR, CHLORINE AND SILICONE, SUCH AS CINCINNATI MILACRON'S CIMTECH 410 (STAINLESS STEEL.)

REV.	DATE	DCN #	DRAWING TREE #
A	7/04	E040303-00	E030507-A



D020526\_MCStructure\_Crossbar1.step

4X, 1/4-20 UNC-2B  
 + .005 OVERSIZE TAP (PLEASE USE TAP PROVIDED)  
 ∇ .50,  
 BOTH ENDS

ITEM NO.	REQ.	SPARE	TOT.	PART NUMBER	DESCRIPTION	SUPPLIER	
	QUANTITY						
UNLESS OTHERWISE SPECIFIED:							
DIMENSIONS ARE IN INCHES				DATE	NAME	<b>CALIFORNIA INSTITUTE OF TECHNOLOGY          MASSACHUSETTS INSTITUTE OF TECHNOLOGY</b> SYSTEM <b>ADVANCED LIGO</b> SUB-SYSTEM <b>SUSPENSIONS</b> NEXT ASSY <b>MODE CLEANER SUSPENSIONS</b> PART NAME <b>CROSSBAR FOR STOPS 2</b>	
TOLERANCES: .XX ±:0.01 .XXX ±:0.005 ANGULAR: ±.5 DEG				DRAWN	11/02		J.ROMIE
MATERIAL				CHECKED			
FINISH							
6061-T6 ALUM				COMMENTS:		SIZE <b>B</b> DWG. NO. <b>D020526</b> REV <b>A</b>	
NONE						SCALE: SHEET 1 OF 1	