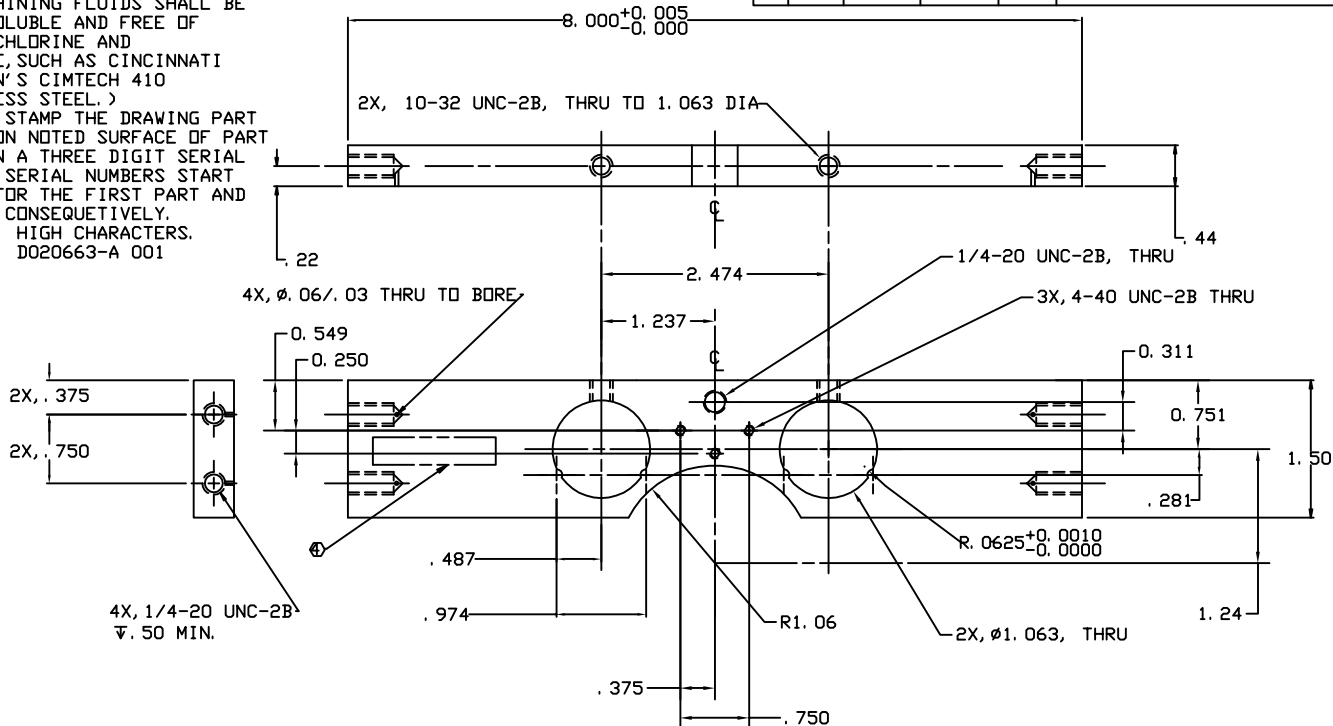


NOTES: (UNLESS OTHERWISE SPECIFIED)

1. DIMENSIONS IN INCHES.
2. BREAK ALL SHARP EDGES.
3. ALL MACHINING FLUIDS SHALL BE WATER SOLUBLE AND FREE OF SULFUR, CHLORINE AND SILICONE, SUCH AS CINCINNATI MILACRON'S CIMTECH 410 (STAINLESS STEEL.)

ETCH OR STAMP THE DRAWING PART NUMBER ON NOTED SURFACE OF PART AND THEN A THREE DIGIT SERIAL NUMBER. SERIAL NUMBERS START AT 001 FOR THE FIRST PART AND PROCEED CONSEQUETIVELY. USE .07" HIGH CHARACTERS. EXAMPLE: D020663-A 001

REV	DATE	DRAWN BY	CHECKED	DOC	DOC/DESCRIPTION
A	9/03	J. ROMIE			E030462/INITIAL RELEASE



A  
B  
C  
D

1

2

3

4

UNLESS OTHERWISE SPECIFIED DIMENSIONS ARE IN INCHES FRACTIONS DECIMALS		APPROVALS	DATE	LIGO CALIFORNIA INSTITUTE OF TECHNOLOGY MASSACHUSETTS INSTITUTE OF TECHNOLOGY	
0. XX=±0.01 0. XX±0.005 ANGLES=±0.5°		DESIGN J. ROMIE	9/01	TITLE GIN GIN ITM HEAD HOLDER, TOP	
300 SERIES SST		CHECKED		DWG NO. D020663	
NEXT ASSEMBLY D020622		DATE		REV A	
FILE LOCATION /home/acc/docs/D020663.pdf		SCALE	1/1	SHEET 1 OF 1	