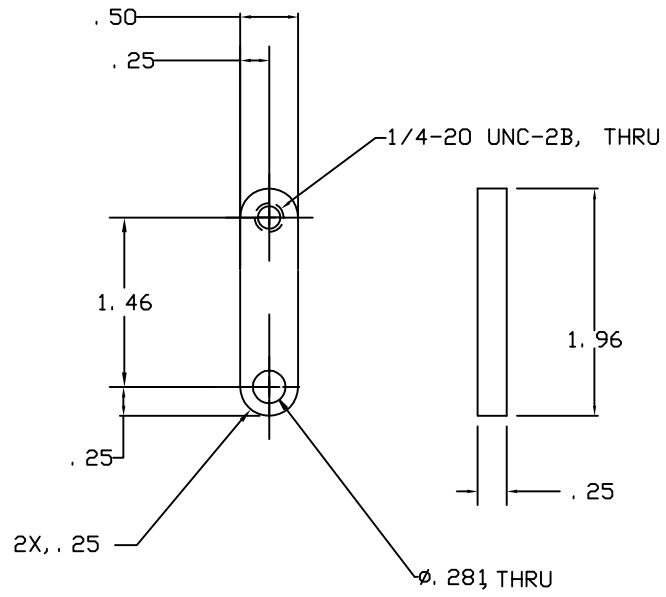


NOTES: (UNLESS OTHERWISE SPECIFIED)
 1. DIMENSIONS IN INCHES.
 2. BREAK ALL SHARP EDGES.
 3. ALL MACHINING FLUIDS SHALL BE WATER SOLUABLE AND FREE OF SULFUR, CHLORINE AND SILICONE, SUCH AS CINCINNATI MILACRON'S CIMTECH 410 (STAINLESS STEEL.)

REV	DATE	DRAWN BY	CHECKED	DCC	DWG/DESCRIPTION
A	9/03	J. ROMIE			E030462/INITIAL RELEASE



NEXT ASSEMBLY D020662
 FILE LOCATION /home/dcc/docs/D020665.pdf

QTY REQD	FSC# NO	PART OR IDENTIFYING NO	NOMENCLATURE OR DESCRIPTION	MATERIAL SPECIFICATION	ITEM NO
PARTS LIST					
UNLESS OTHERWISE SPECIFIED DIMENSIONS ARE IN INCHES.			APPROVALS	DATE	
FRACTIONS DECIMALS			DRAWN	J. ROMIE	11/02
0. XX=±0.01			CHECKED		
0. XXX=±0.005					
ANGLES=±0.5°					
DO NOT SCALE DRAWING					
MATERIAL 300 SERIES SST			LIGO CALIFORNIA INSTITUTE OF TECHNOLOGY MASSACHUSETTS INSTITUTE OF TECHNOLOGY		
			TITLE GIN GIN ITM FACE BRACKET		
			DWG NO. D020665		
			REV A		
			SCALE 1/1		
			SHEET 1 OF 1		