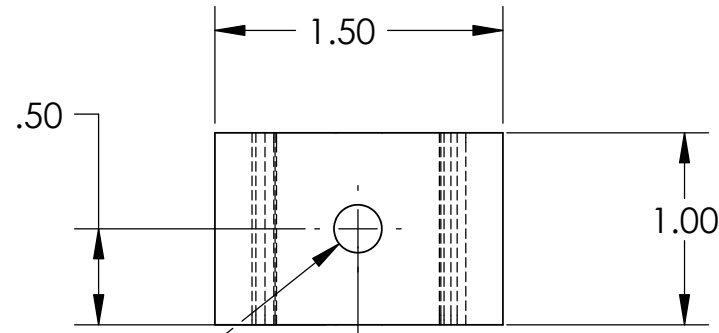


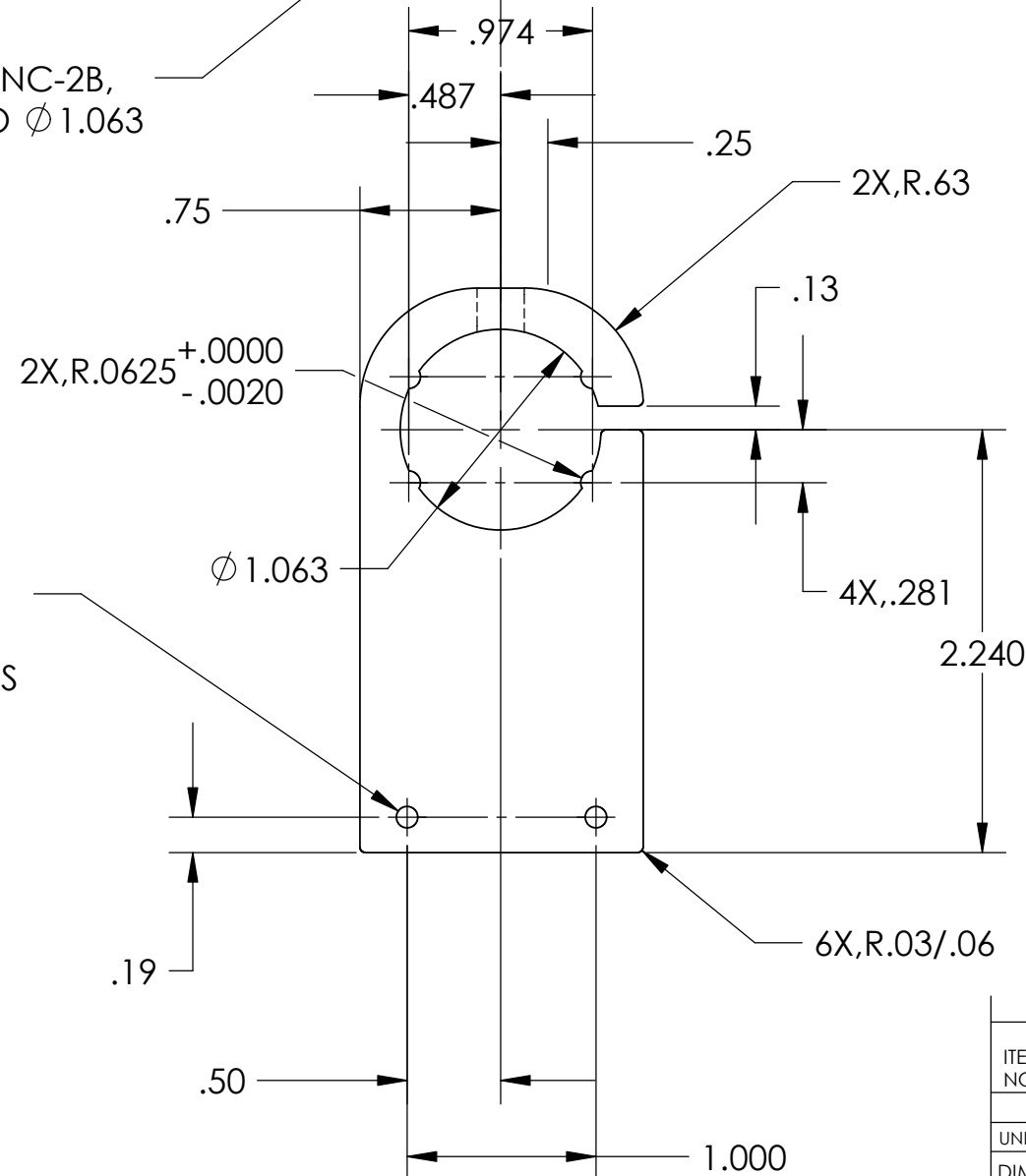
NOTES: (UNLESS OTHERWISE SPECIFIED)
 1. DIMENSIONS IN INCHES.
 2. BREAK ALL SHARP EDEGS.
 3. ALL MACHINING FLUIDS SHALL BE WATER SOLUBLE AND FREE OF SULFUR, CHLORINE AND SILICONE, SUCH AS CINCINNATI MILACRON'S CIMTECH 410 (STAINLESS STEEL.)

REV.	DATE	DCN #	DRAWING TREE #
A	7/04	E040303-00	E030507-A

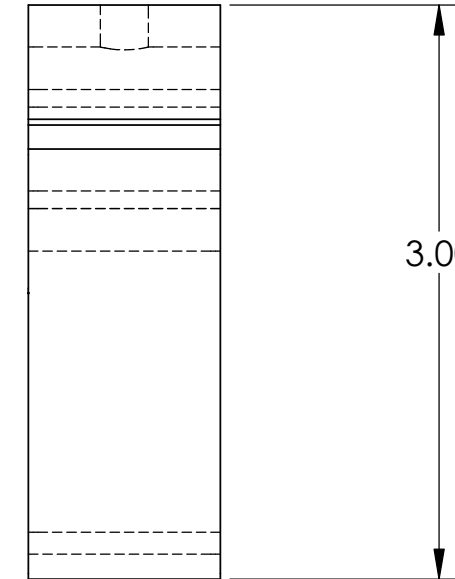


D030017_LIGO1_SENSORACTUATOR_BRACKET_2.step

1/4-20UNC-2B,
 THRU TO ϕ 1.063



2X, 4-40
 + .005" OVERSIZE TAP
 ∇ .38 MIN., BOTH SIDES



ITEM NO.	REQ.	SPARE	TOT.	PART NUMBER	DESCRIPTION	SUPPLIER
	QUANTITY					
UNLESS OTHERWISE SPECIFIED: DIMENSIONS ARE IN INCHES						
TOLERANCES: .XX \pm 0.01 .XXX \pm 0.005 ANGULAR: \pm 0.5 DEG.				DATE	NAME	CALIFORNIA INSTITUTE OF TECHNOLOGY MASSACHUSETTS INSTITUTE OF TECHNOLOGY SYSTEM: ADVANCED LIGO SUB-SYSTEM: SUSPENSIONS NEXT ASSY: MC SUSPENSION PART NAME: LIGO1 SENSOR/ACTUATOR BRACKET 2
DRAWN				8/02	J.Romie	
CHECKED						
MATERIAL				COMMENTS:		
6061-T6 ALUM.						SIZE: B DWG. NO.: D030017 REV: A
FINISH						SCALE: N/A
NONE						SHEET 1 OF 1